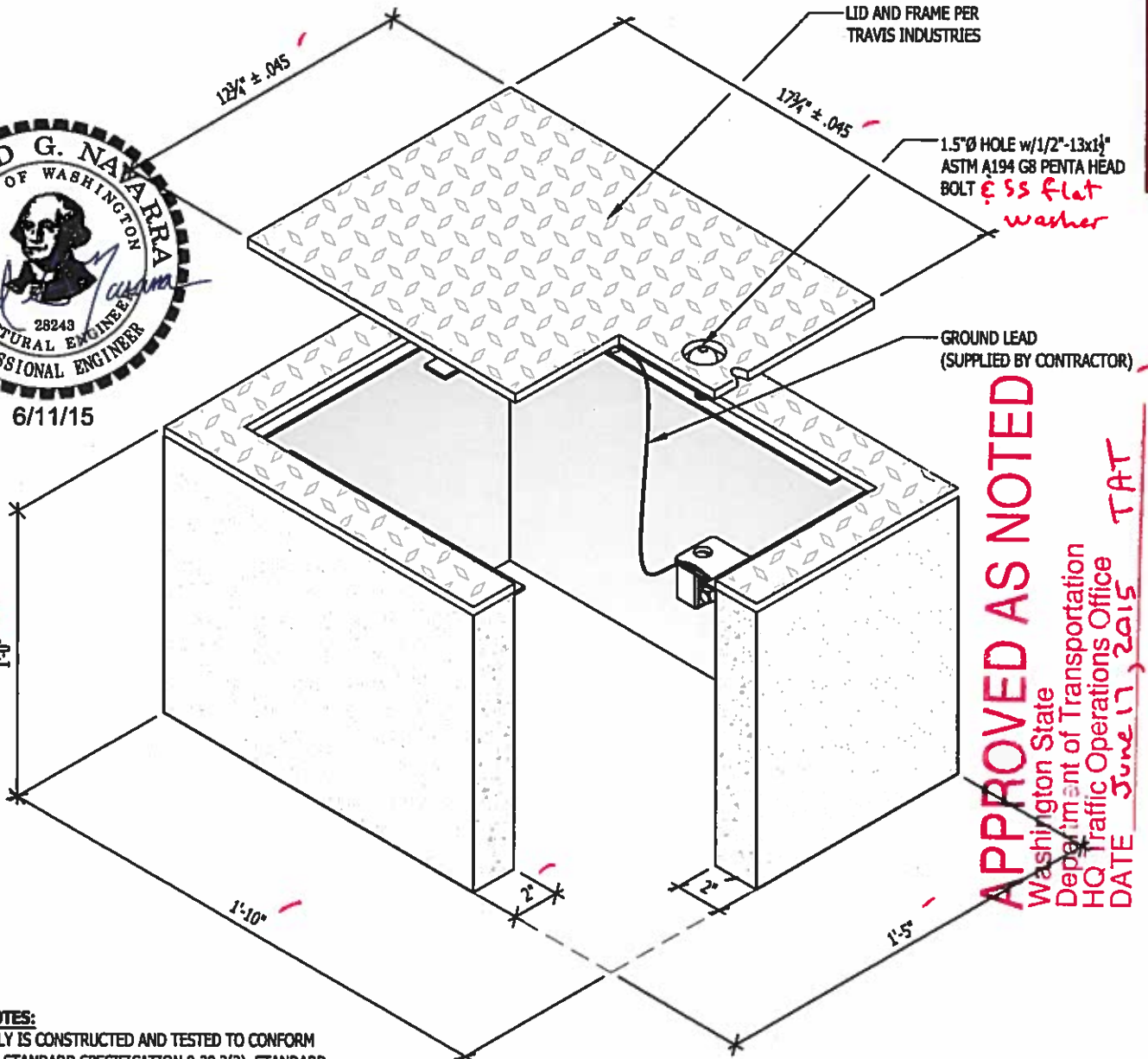


**CHECK REQUIRED SPECIFICATION**

|                                     |
|-------------------------------------|
| STANDARD                            |
| WSDOT / STATE CONTRACT NUMBER _____ |
| SLIPNOT                             |
| GALVANIZED DIAMOND PLATE            |
| BLACK                               |

**GENERAL NOTES:**  
 LID TO BE PER TRAVIS INDUSTRIES PRODUCT, PART NUMBERS:  
 700-00001 (DP) - DIAMOND PLATE *lid & frame shall be hot-dip galvanized per 9-29.2(1)A*  
 700-00031 (SN) - SLIPNOT  
 FRAME PART #  
 700-00003 (DP) - DIAMOND PLATE  
 700-00032 (SN) - SLIPNOT  
 CONCRETE w/FIBERMESH REINFORCING  
 f<sub>c</sub>=4000 psi @28 days



**APPROVED AS NOTED**  
 Washington State  
 Department of Transportation  
 HQ Traffic Operations Office  
 DATE June 17, 2015 TAT

**GENERAL NOTES:**  
 THIS ASSEMBLY IS CONSTRUCTED AND TESTED TO CONFORM WITH WSDOT STANDARD SPECIFICATION 9-29.2(2), STANDARD DUTY JUNCTION BOXES

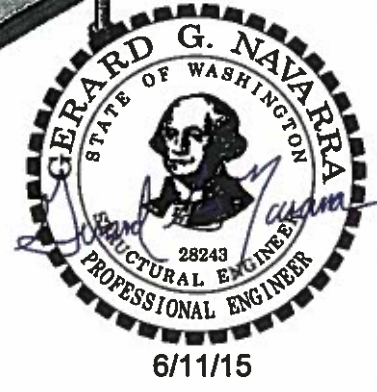
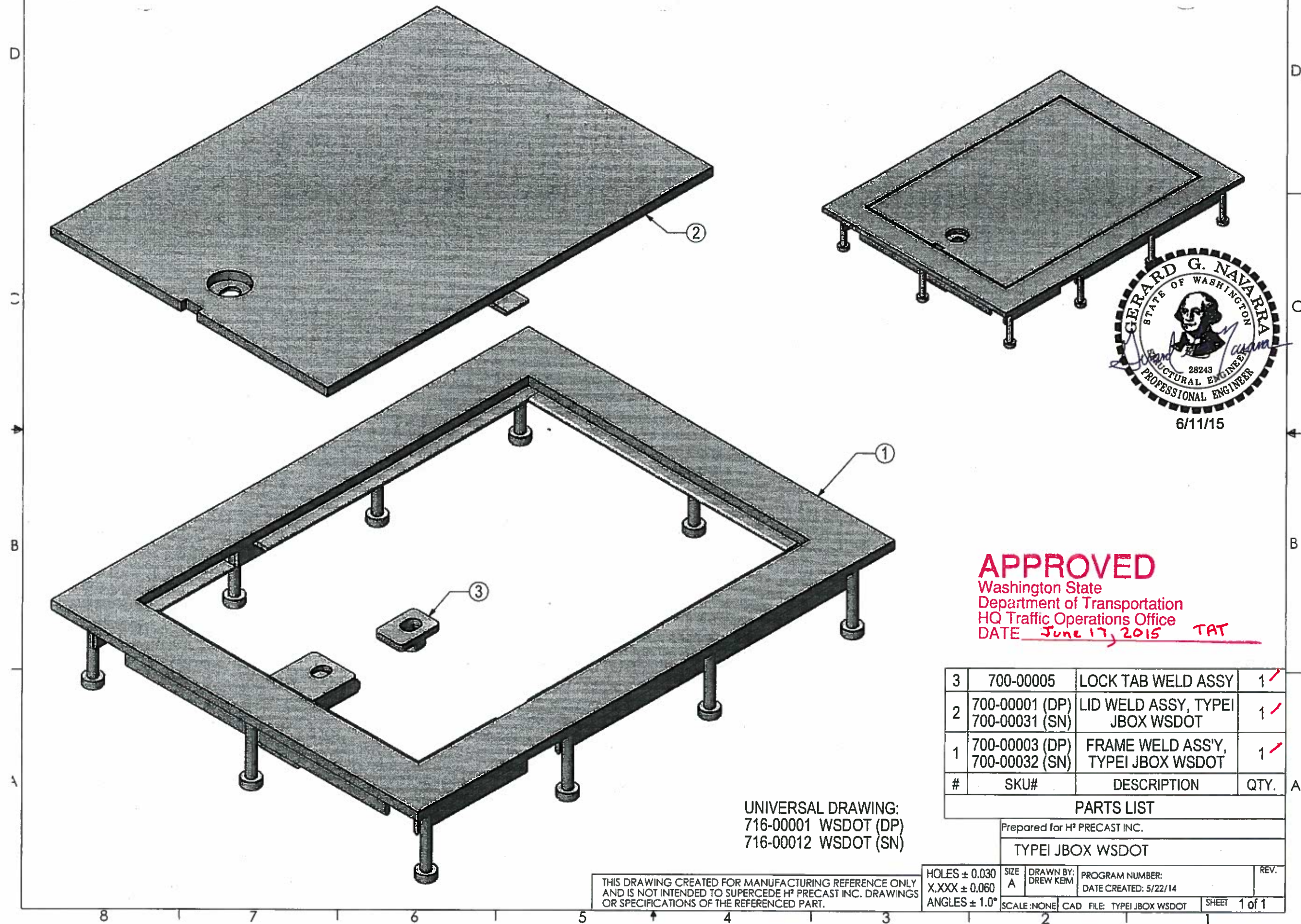
H<sup>2</sup> Pre-Cast Inc.  
 3835 N. Clemons  
 East Wenatchee, WA

Phone: (509) 884-6644  
 Fax: (509) 884-4567  
 Web: www.h2precast.com  
 © 2007 H<sup>2</sup> Pre-Cast Inc.



THE INFORMATION CONTAINED IN THIS DRAWING IS THE SOLE PROPERTY OF H<sup>2</sup> PRECAST INC. ANY REPRODUCTION IN PART OR WHOLE WITHOUT THE WRITTEN PERMISSION OF FM&M IS PROHIBITED.

This assembly is constructed and tested to conform with WSDOT Standard Specification 9-29.2(2), Standard Duty Junction Boxes.



**APPROVED**  
 Washington State  
 Department of Transportation  
 HQ Traffic Operations Office  
 DATE June 17, 2015 TAT

| # | SKU#                             | DESCRIPTION                           | QTY. |
|---|----------------------------------|---------------------------------------|------|
| 3 | 700-00005                        | LOCK TAB WELD ASSY                    | 1 ✓  |
| 2 | 700-00001 (DP)<br>700-00031 (SN) | LID WELD ASSY, TYPE I<br>JBOX WSDOT   | 1 ✓  |
| 1 | 700-00003 (DP)<br>700-00032 (SN) | FRAME WELD ASSY,<br>TYPE I JBOX WSDOT | 1 ✓  |

**PARTS LIST**

Prepared for H<sup>2</sup> PRECAST INC.

TYPE I JBOX WSDOT

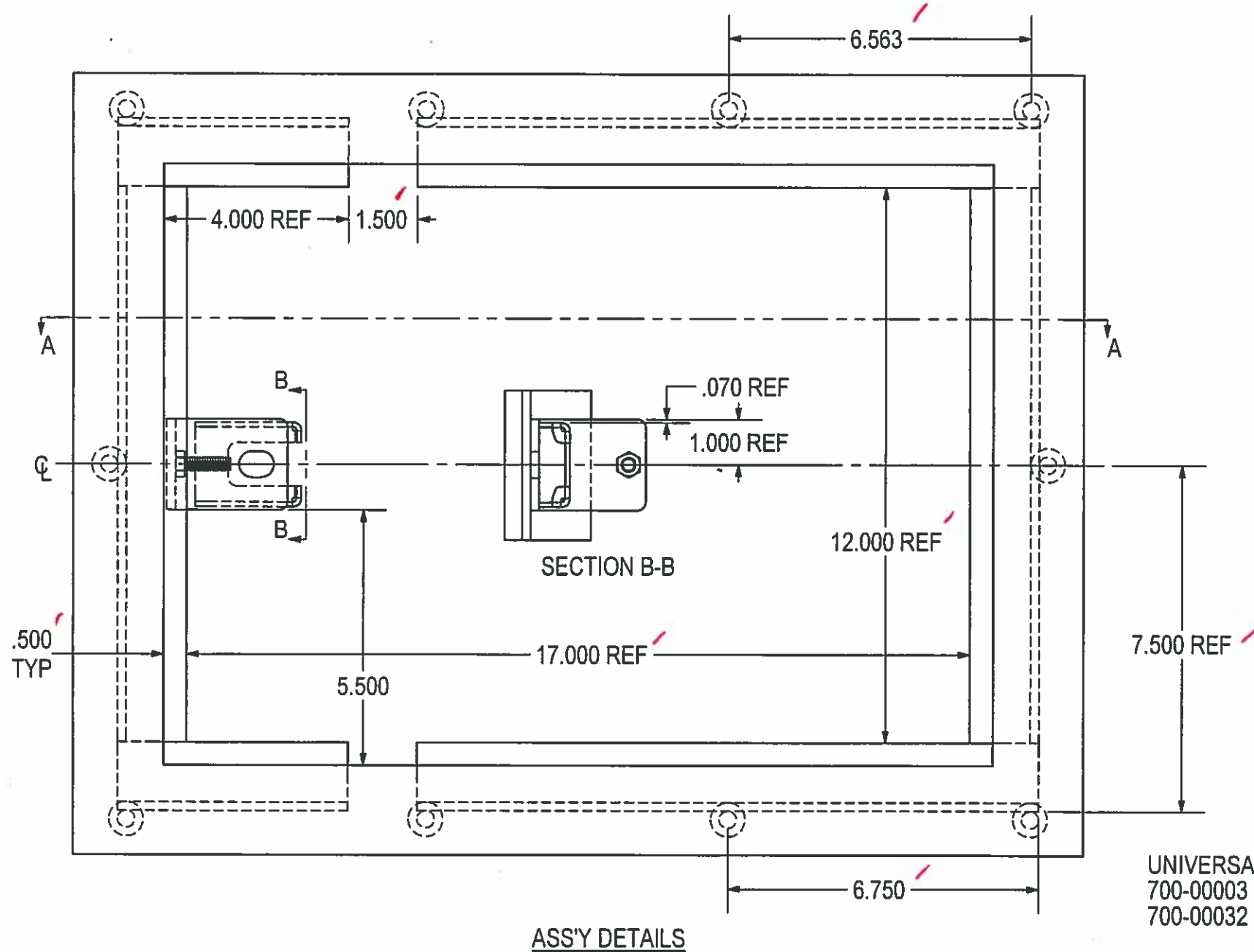
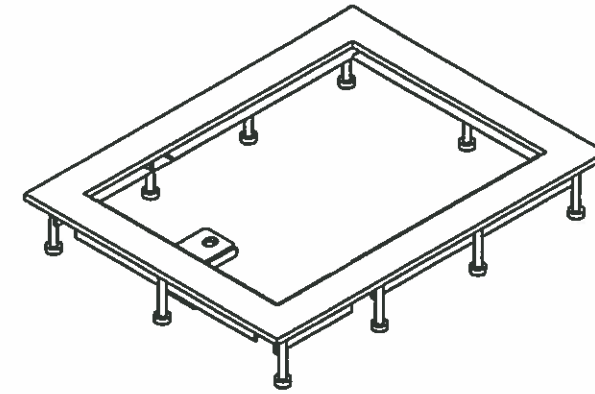
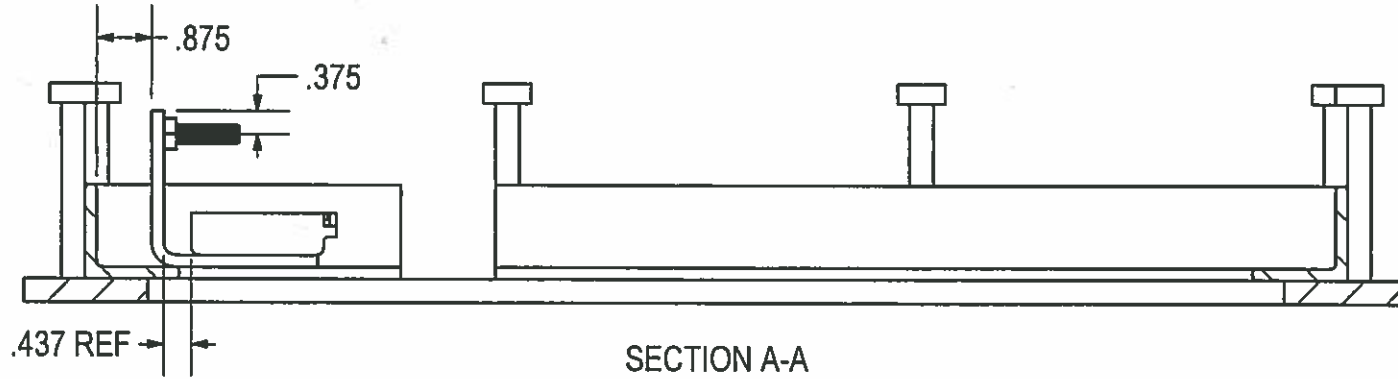
UNIVERSAL DRAWING:  
 716-00001 WSDOT (DP)  
 716-00012 WSDOT (SN)

|   |           |                             |  |      |
|---|-----------|-----------------------------|--|------|
| HOLES ± 0.030<br>X.XXX ± 0.060<br>ANGLES ± 1.0° | SIZE<br>A | DRAWN BY:<br>DREW KEM       | PROGRAM NUMBER:<br>DATE CREATED: 5/22/14 | REV. |
| SCALE: NONE                                     |           | CAD FILE: TYPE I JBOX WSDOT | SHEET 1 of 1                             |      |

THE INFORMATION CONTAINED IN THIS DRAWING IS THE SOLE PROPERTY OF H<sup>2</sup> PRECAST INC. ANY REPRODUCTION IN PART OR WHOLE WITHOUT THE WRITTEN PERMISSION OF FM&M IS PROHIBITED.

This assembly is constructed and tested to conform with WSDOT Standard Specification 9-29.2(2), Standard Duty Junction Boxes.

| REV | DESCRIPTION                     | DATE | INITIALS |
|-----|---------------------------------|------|----------|
| A   | MODIFIED LATCH GUIDE & WELDING. | 7/14 | DK       |



**APPROVED**  
 Washington State  
 Department of Transportation  
 HQ Traffic Operations Office  
 DATE June 17, 2015 TAT

UNIVERSAL DRAWING:  
 700-00003 3/8"DP  
 700-00032 3/8"SN

|  |                                    |  |           |
|--|------------------------------------|--|-----------|
| Prepared for H <sup>2</sup> PRECAST INC. |                                    |  |           |
| FRAME WELD ASS'Y, TYPE I JBOX WSDOT      |                                    |  |           |
| SIZE<br>A                                | DRAWN BY:<br>DREW KEM              | PROGRAM NUMBER:<br>DATE CREATED: 4/29/14 | REV.<br>A |
| SCALE: NONE                              | CAD FILE: FRAME (A). TI JBOX WSDOT | SHEET 1 of 2                             |           |

THIS DRAWING CREATED FOR MANUFACTURING REFERENCE ONLY AND IS NOT INTENDED TO SUPERCEDE H<sup>2</sup> PRECAST INC. DRAWINGS OR SPECIFICATIONS OF THE REFERENCED PART.

HOLES ± 0.030  
 X.XXX ± 0.060  
 ANGLES ± 1.0°

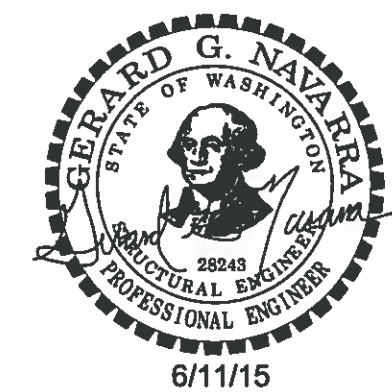
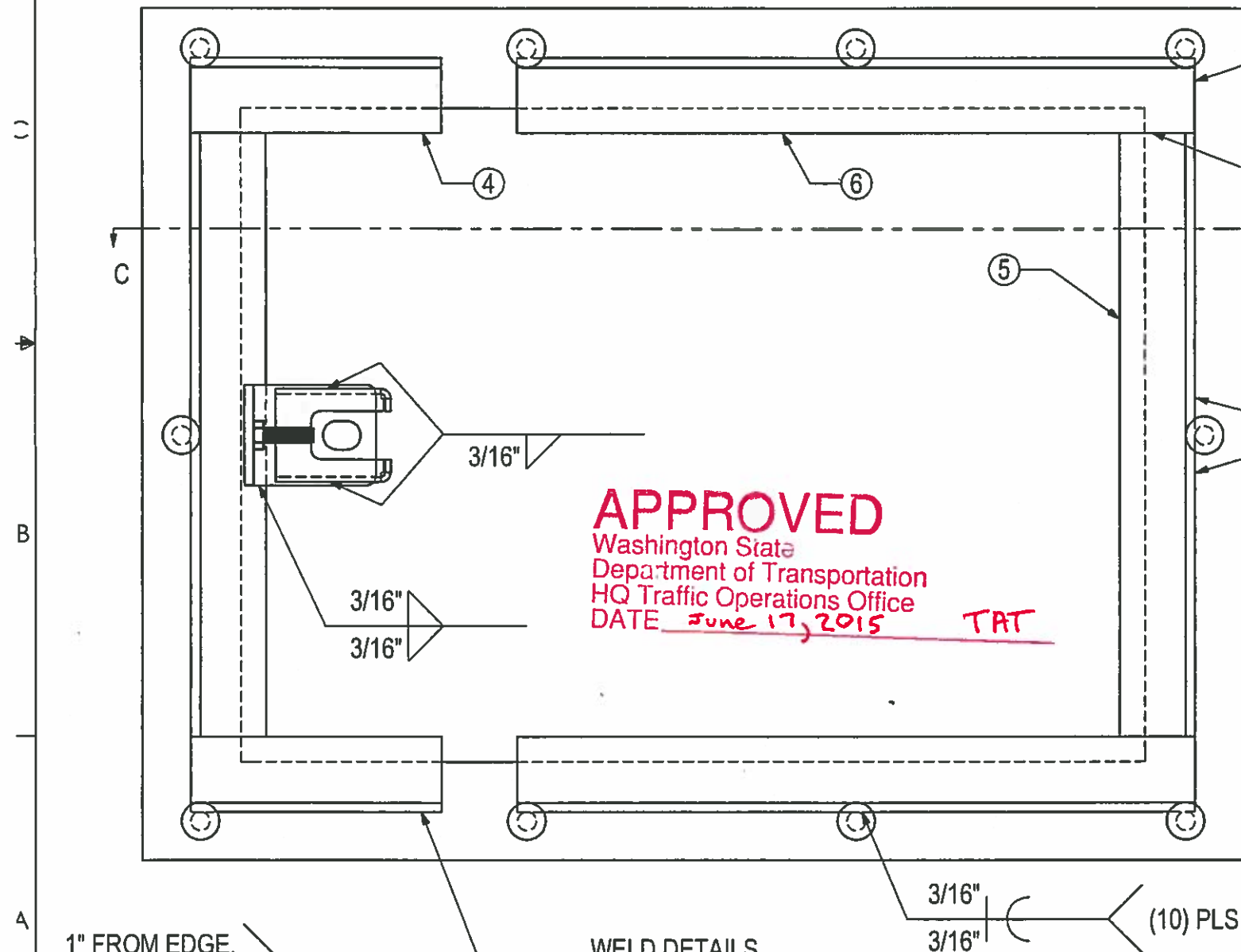
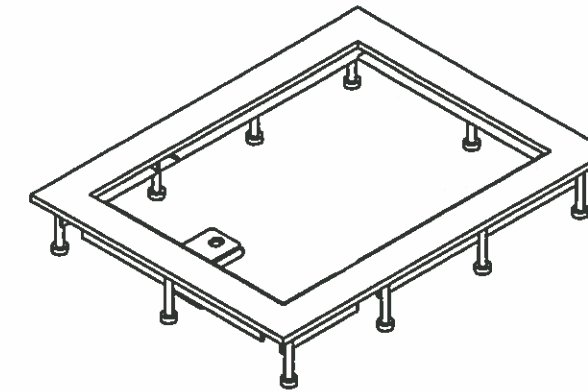
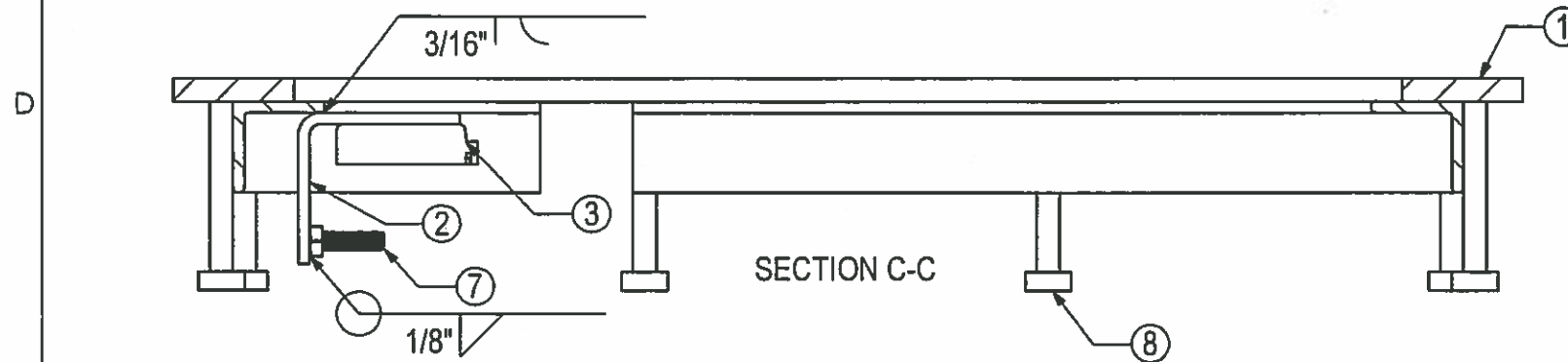
8 7 6 5 4 3 2 1



THE INFORMATION CONTAINED IN THIS DRAWING IS THE SOLE PROPERTY OF H<sup>2</sup> PRECAST INC. ANY REPRODUCTION IN PART OR WHOLE WITHOUT THE WRITTEN PERMISSION OF FM&M IS PROHIBITED.

This assembly is constructed and tested to conform with WSDOT Standard Specification 9-29.2(2), Standard Duty Junction Boxes.

| REV | DESCRIPTION                     | DATE | INITIALS |
|-----|---------------------------------|------|----------|
| A   | MODIFIED LATCH GUIDE & WELDING. | 7/14 | DK       |



**APPROVED**  
 Washington State  
 Department of Transportation  
 HQ Traffic Operations Office  
 DATE June 17, 2015 TAT

| # | SKU#                      | DESCRIPTION                                      | MATERIAL     | QTY. |
|---|---------------------------|--|--------------|------|
| 8 | 101-00575                 | WELD-STUD, 3/8x3-1/8                             | C1015        | 10   |
| 7 | 101-00271                 | Ø5/16-18X1" HHCS 316SS                           | 316SS        | 1    |
| 6 | 211-02166                 | FRAME ANGLE, 1-1/2x1-1/2x3/16 x 13.500 LONG      | A36HR        | 2    |
| 5 | 211-02165                 | FRAME ANGLE, 1-1/2x1-1/2x3/16 x 12.000 LONG      | A36HR        | 2    |
| 4 | 211-02164                 | FRAME ANGLE, 1-1/2x1-1/2x3/16 x 5.000 LONG       | A36HR        | 2    |
| 3 | 716-L004                  | LATCH GUIDE                                      | A36HR        | 1    |
| 2 | 716-L001                  | LATCH HOUSING                                    | A36HR        | 1    |
| 1 | 716-WSDOT101<br>716-S0028 | FRAME, TYPE I J-BOX DP<br>FRAME, TYPE I J-BOX SN | ASTM A786 FP | 1    |

**PARTS LIST**

Prepared for H<sup>2</sup> PRECAST INC.  
**FRAME WELD ASS'Y, TYPE I JBOX WSDOT**

UNIVERSAL DRAWING:  
 700-00003 3/8"DP  
 700-00032 3/8"SN

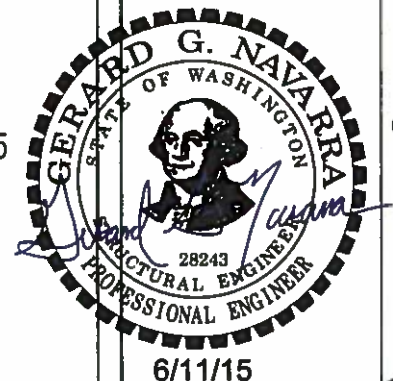
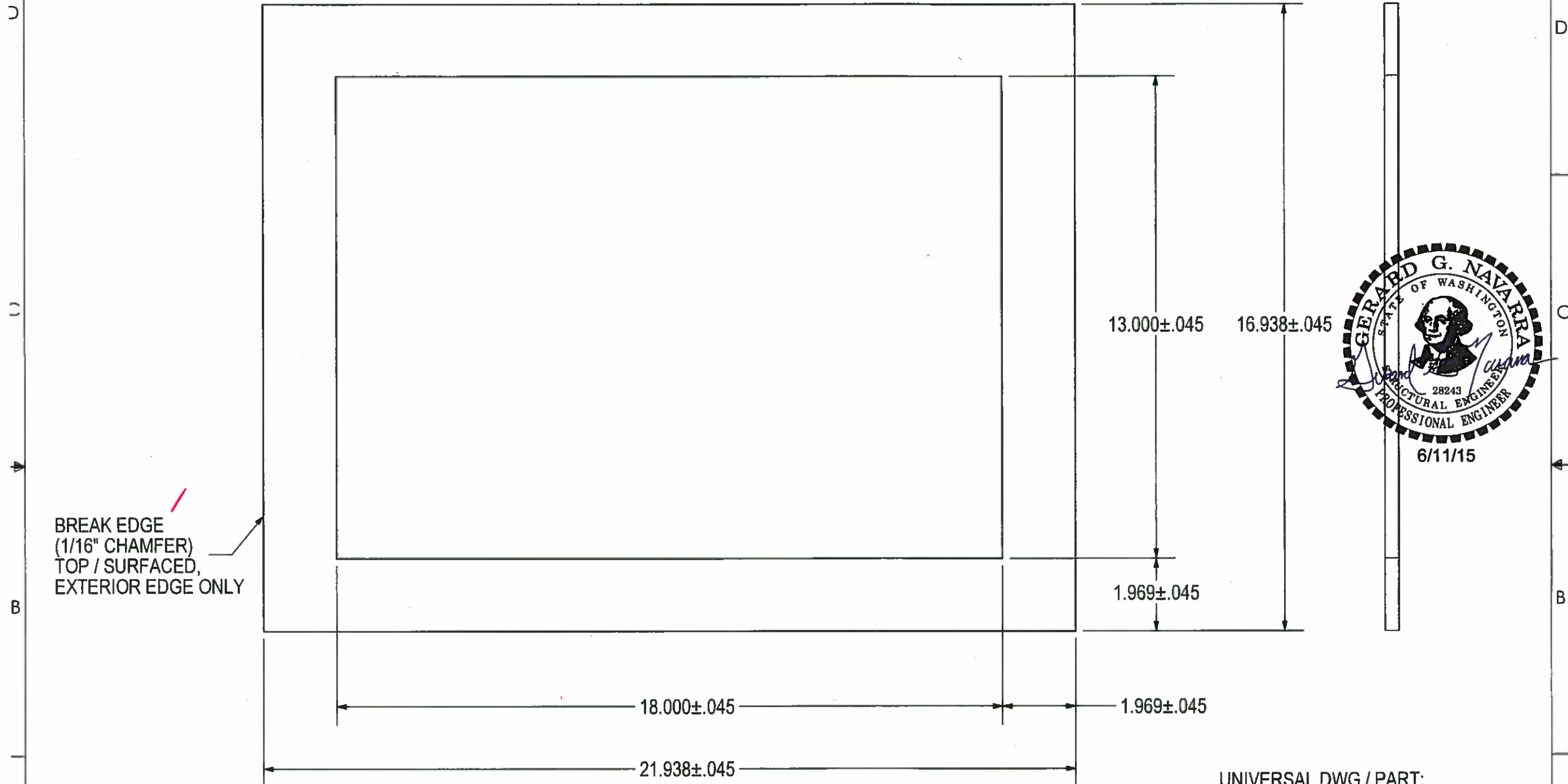
THIS DRAWING CREATED FOR MANUFACTURING REFERENCE ONLY AND IS NOT INTENDED TO SUPERCEDE H<sup>2</sup> PRECAST INC. DRAWINGS OR SPECIFICATIONS OF THE REFERENCED PART.

|   |        |                     |                                       |        |
|---|--------|---------------------|---------------------------------------|--------|
| Holes ± 0.030<br>X.XXX ± 0.060<br>Angles ± 1.0° | SIZE A | DRAWN BY: DREW KEIM | PROGRAM NUMBER: DATE CREATED: 4/29/14 | REV. A |
|---|--------|---------------------|---------------------------------------|--------|

THE INFORMATION CONTAINED IN THIS DRAWING IS THE SOLE PROPERTY OF H<sup>2</sup> PRECAST INC. ANY REPRODUCTION IN PART OR WHOLE WITHOUT THE WRITTEN PERMISSION OF FM&M IS PROHIBITED.

This assembly is constructed and tested to conform with WSDOT Standard Specification 9-29.2(2), Standard Duty Junction Boxes.

| REV | DESCRIPTION        | DATE | INITIALS |
|-----|--------------------|------|----------|
| A   | ADDED CHAMFER NOTE | 7/14 | DK       |



BREAK EDGE  
(1/16" CHAMFER)  
TOP / SURFACED,  
EXTERIOR EDGE ONLY

UNIVERSAL DWG / PART:  
716-WSDOT101 (DIAMOND PLATE)  
WSDOT - TYPE I J-BOX  
716-S0028 (SLIPNOT PLATE)  
SDOT - TYPE I J-BOX  
WSDOT - TYPE I J-BOX

**APPROVED**  
Washington State  
Department of Transportation  
HQ Traffic Operations Office  
DATE June 17, 2015 TAT

3/8 DIAMOND PLATE / SLIPNOT (ASTM A786 FLOOR PLATE)  
21.938 X 16.938  
(1) REQ'D

THIS DRAWING CREATED FOR MANUFACTURING REFERENCE ONLY  
AND IS NOT INTENDED TO SUPERCEDE H<sup>2</sup> PRECAST INC. DRAWINGS  
OR SPECIFICATIONS OF THE REFERENCED PART.

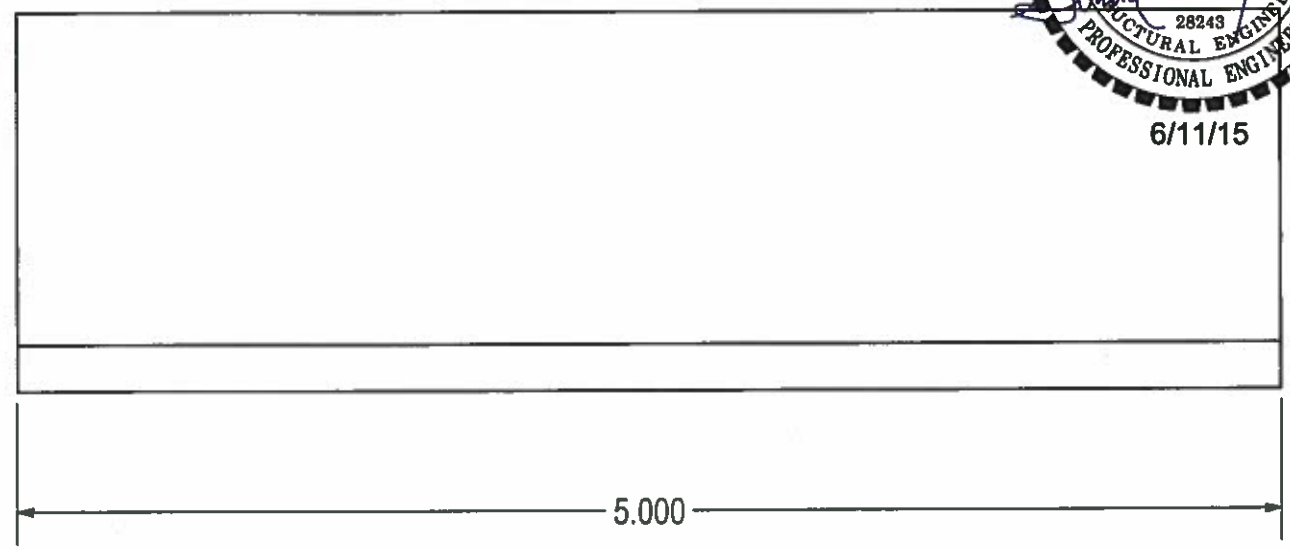
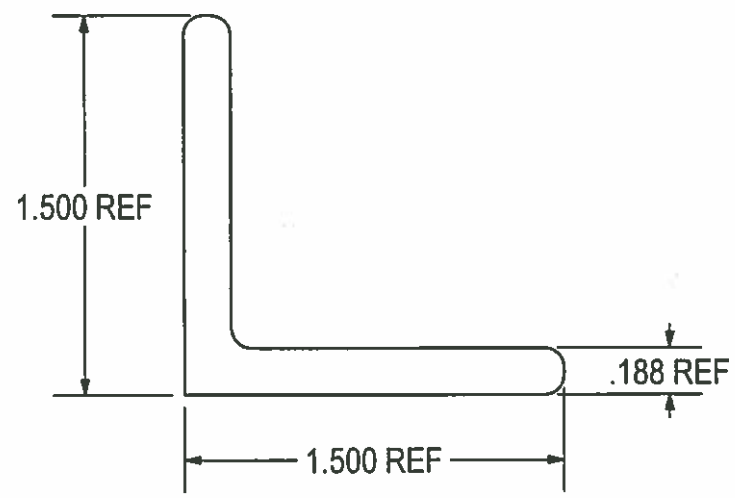
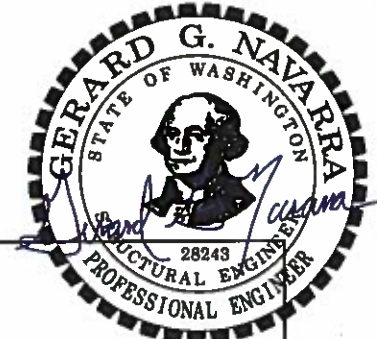
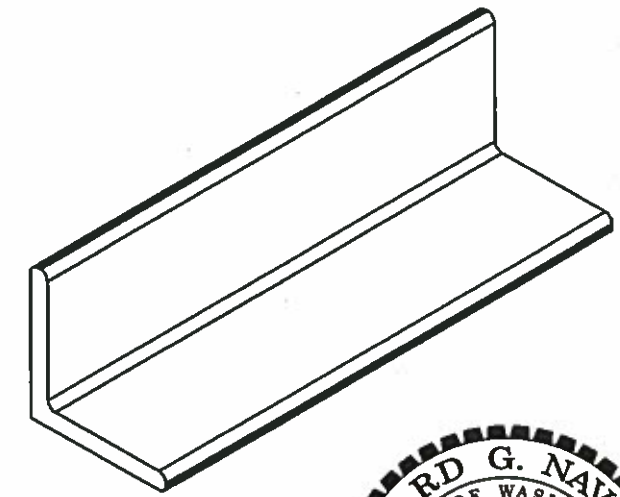
|  |                        |  |           |
|--|------------------------|--|-----------|
| Prepared for H <sup>2</sup> PRECAST INC. |                        |  |           |
| FRAME, TYPE I                            |                        |  |           |
| SIZE<br>A                                | DRAWN BY:<br>DREW KEIM | PROGRAM NUMBER:<br>DATE CREATED: 5/31/12 | REV.<br>A |
| SCALE: NONE                              | CAD FILE: 716-S0028A   | SHEET                                    | OF        |

8 7 6 5 4 3 2 1

THE INFORMATION CONTAINED IN THIS DRAWING IS THE SOLE PROPERTY OF H<sup>2</sup> PRECAST INC. ANY REPRODUCTION IN PART OR WHOLE WITHOUT THE WRITTEN PERMISSION OF FM&M IS PROHIBITED.

This assembly is constructed and tested to conform with WSDOT Standard Specification 9-29.2(2), Standard Duty Junction Boxes.

| REV | DESCRIPTION                                  | DATE | INITIALS |
|-----|--|------|----------|
| A   | 3/16 THICKNESS WAS 1/4. UPDATED DESCRIPTION. | 7/14 | DK       |

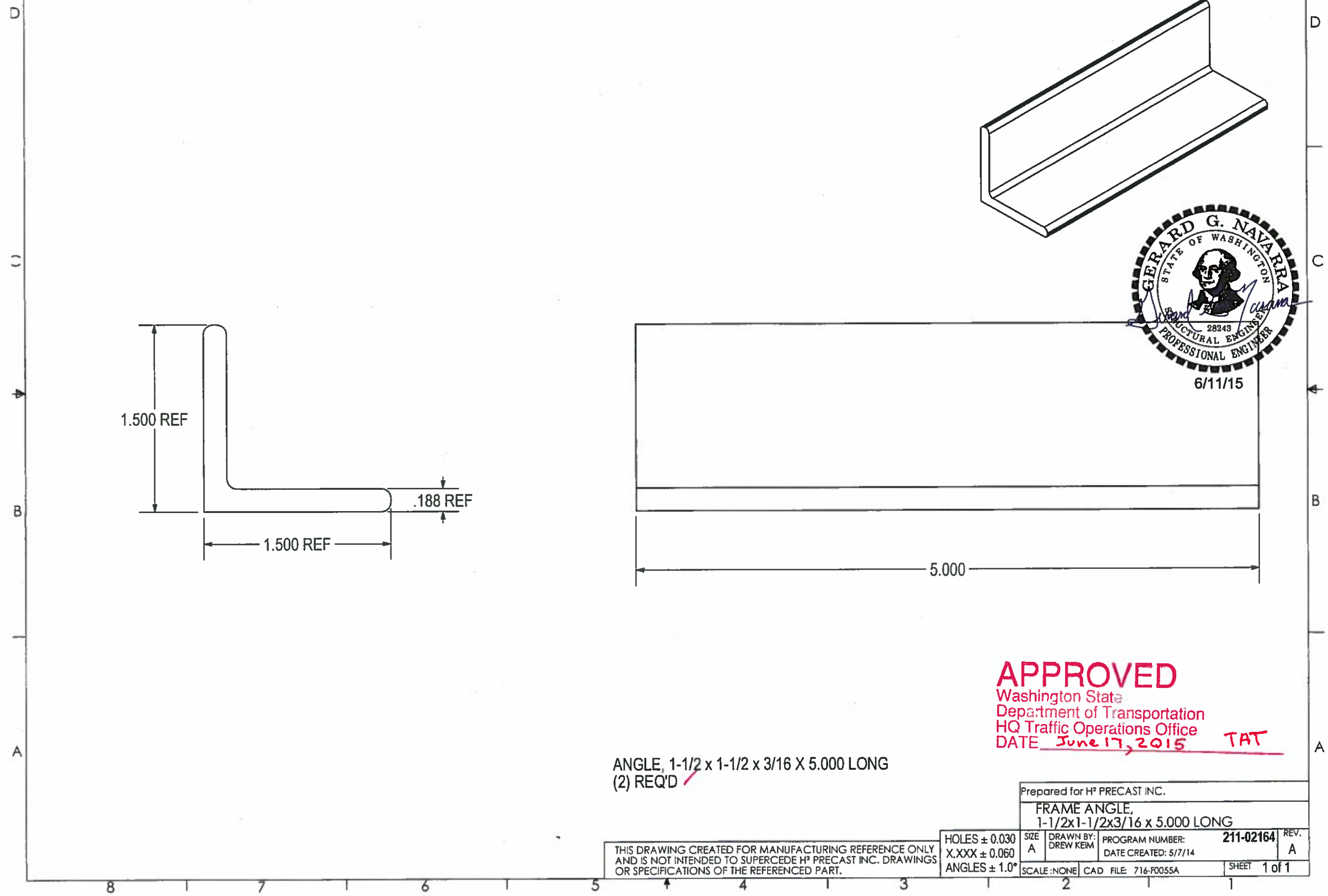


**APPROVED**  
 Washington State  
 Department of Transportation  
 HQ Traffic Operations Office  
 DATE June 17, 2015 TAT

ANGLE, 1-1/2 x 1-1/2 x 3/16 X 5.000 LONG  
 (2) REQ'D

|   |                        |                              |              |
|---|------------------------|------------------------------|--------------|
| Prepared for H <sup>2</sup> PRECAST INC.        |                        |                              |              |
| FRAME ANGLE,<br>1-1/2x1-1/2x3/16 x 5.000 LONG   |                        |                              |              |
| SIZE<br>A                                       | DRAWN BY:<br>DREW KEIM | PROGRAM NUMBER:<br>211-02164 | REV.<br>A    |
| HOLES ± 0.030<br>X.XXX ± 0.060<br>ANGLES ± 1.0° |                        | DATE CREATED: 5/7/14         | SHEET 1 of 1 |
| SCALE: NONE CAD FILE 716-F0055A                 |                        |                              |              |

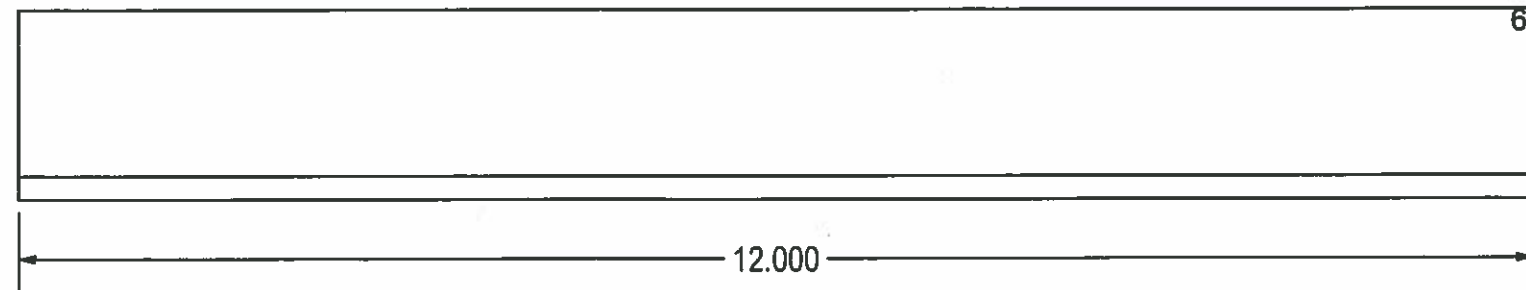
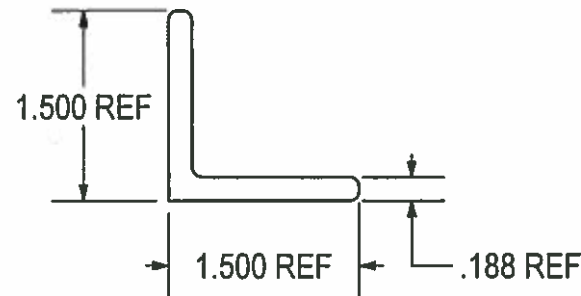
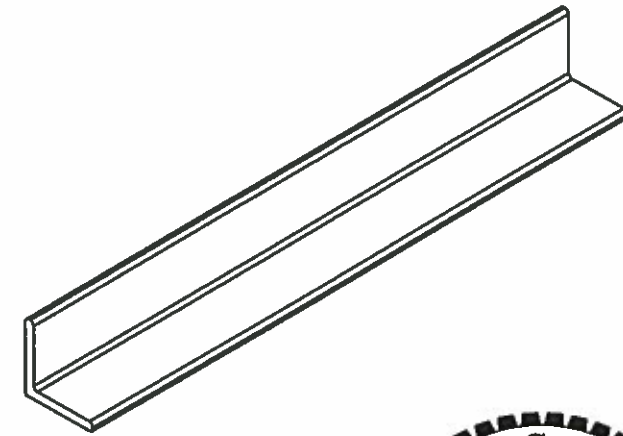
THIS DRAWING CREATED FOR MANUFACTURING REFERENCE ONLY AND IS NOT INTENDED TO SUPERCEDE H<sup>2</sup> PRECAST INC. DRAWINGS OR SPECIFICATIONS OF THE REFERENCED PART.



THE INFORMATION CONTAINED IN THIS DRAWING IS THE SOLE PROPERTY OF H<sup>2</sup> PRECAST INC. ANY REPRODUCTION IN PART OR WHOLE WITHOUT THE WRITTEN PERMISSION OF FM&M IS PROHIBITED.

This assembly is constructed and tested to conform with WSDOT Standard Specification 9-29.2(2), Standard Duty Junction Boxes.

| REV | DESCRIPTION                                  | DATE | INITIALS |
|-----|--|------|----------|
| A   | 3/16 THICKNESS WAS 1/4. UPDATED DESCRIPTION. | 7/14 | DK       |



**APPROVED**  
 Washington State  
 Department of Transportation  
 HQ Traffic Operations Office  
 DATE June 17, 2015 TAT

ANGLE, 1-1/2 x 1-1/2 x 3/16 X 12.000 LONG  
 (2) REQ'D

Prepared for H<sup>2</sup> PRECAST INC.

FRAME ANGLE,  
 1-1/2x1-1/2x3/16 x 12.000 LONG

THIS DRAWING CREATED FOR MANUFACTURING REFERENCE ONLY  
 AND IS NOT INTENDED TO SUPERCEDE H<sup>2</sup> PRECAST INC. DRAWINGS  
 OR SPECIFICATIONS OF THE REFERENCED PART.

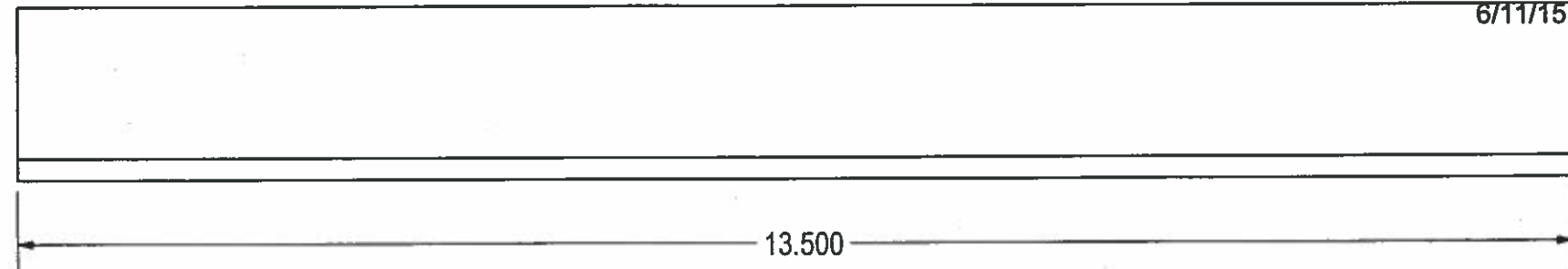
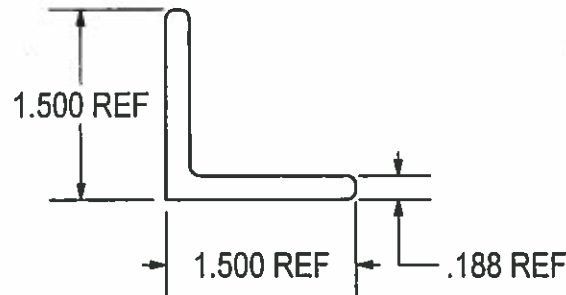
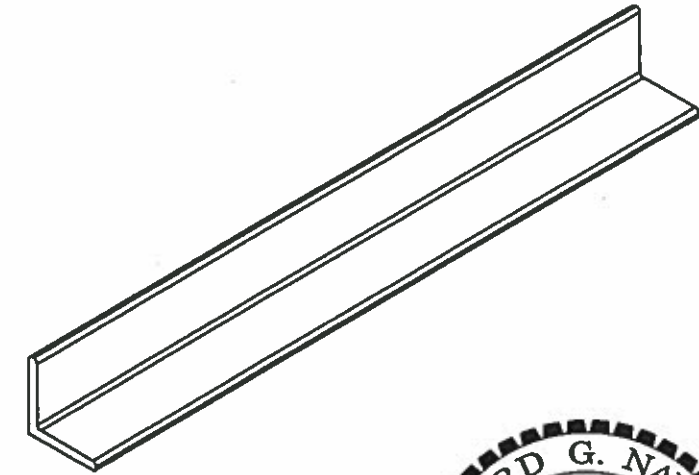
|               |             |                      |                           |        |
|---------------|-------------|----------------------|---------------------------|--------|
| HOLES ± 0.030 | SIZE A      | DRAWN BY: DREW KEIM  | PROGRAM NUMBER: 211-02165 | REV. A |
| X.XXX ± 0.060 |             |                      | DATE CREATED: 5/7/14      |        |
| ANGLES ± 1.0° | SCALE: NONE | CAD FILE: 716-F0053A | SHEET 1 of 1              |        |

8 | 7 | 6 | 5 | 4 | 3 | 2 | 1

THE INFORMATION CONTAINED IN THIS DRAWING IS THE SOLE PROPERTY OF H<sup>2</sup> PRECAST INC. ANY REPRODUCTION IN PART OR WHOLE WITHOUT THE WRITTEN PERMISSION OF FM&M IS PROHIBITED.

This assembly is constructed and tested to conform with WSDOT Standard Specification 9-29.2(2), Standard Duty Junction Boxes.

| REV | DESCRIPTION                                  | DATE | INITIALS |
|-----|--|------|----------|
| A   | 3/16 THICKNESS WAS 1/4. UPDATED DESCRIPTION. | 7/14 | DK       |



**APPROVED AS NOTED**

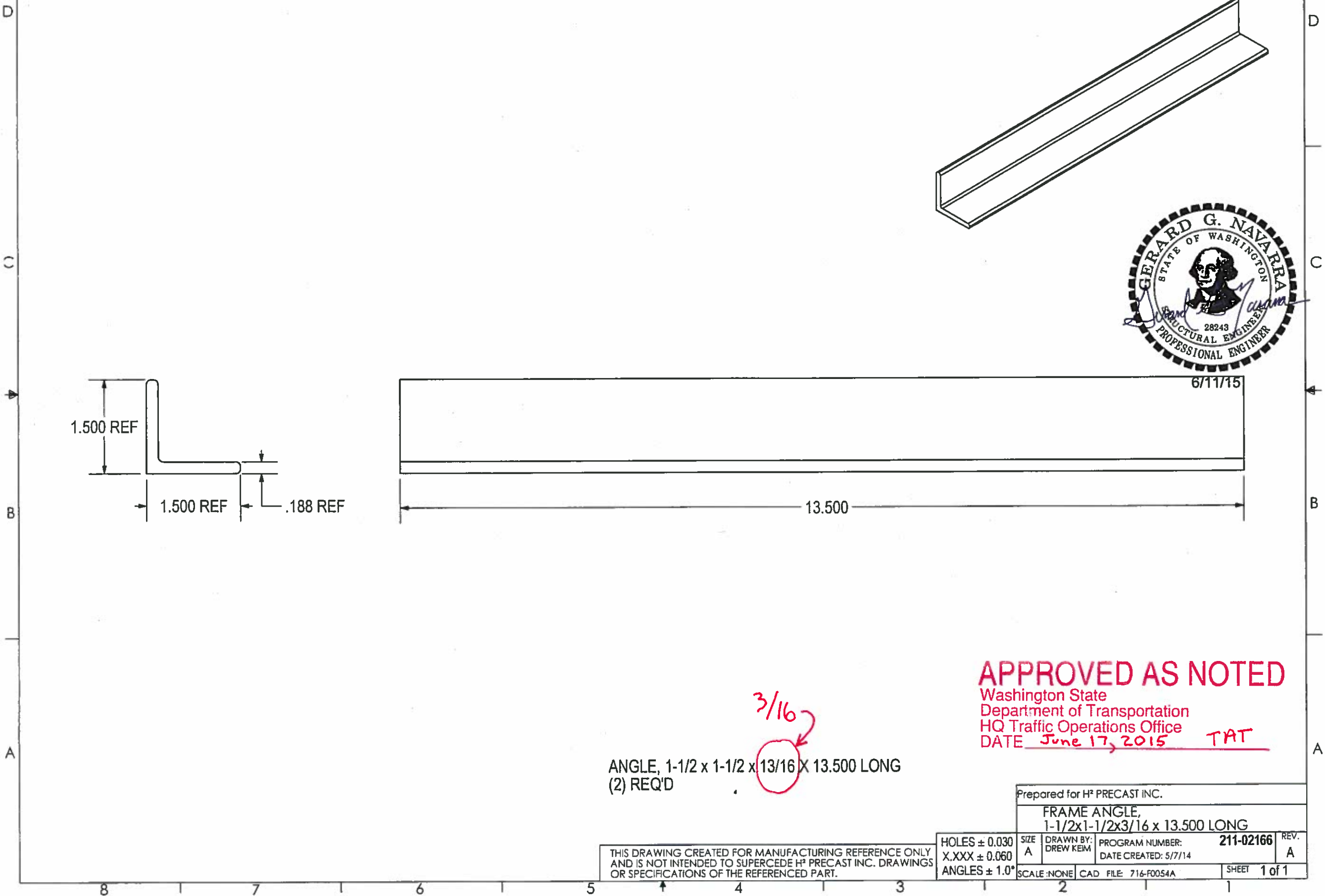
Washington State  
 Department of Transportation  
 HQ Traffic Operations Office  
 DATE June 17, 2015 TAT

3/16

ANGLE, 1-1/2 x 1-1/2 x 13/16 x 13.500 LONG  
 (2) REQ'D

THIS DRAWING CREATED FOR MANUFACTURING REFERENCE ONLY AND IS NOT INTENDED TO SUPERCEDE H<sup>2</sup> PRECAST INC. DRAWINGS OR SPECIFICATIONS OF THE REFERENCED PART.

|  |             |                      |                           |
|--|-------------|----------------------|---------------------------|
| Prepared for H <sup>2</sup> PRECAST INC.       |             |                      |                           |
| FRAME ANGLE,<br>1-1/2x1-1/2x3/16 x 13.500 LONG |             |                      |                           |
| HOLES ± 0.030                                  | SIZE A      | DRAWN BY: DREW KEIM  | PROGRAM NUMBER: 211-02166 |
| X.XXX ± 0.060                                  |             |                      | DATE CREATED: 5/7/14      |
| ANGLES ± 1.0°                                  | SCALE: NONE | CAD FILE: 716-F0054A | SHEET 1 of 1              |



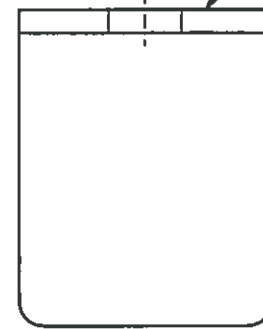
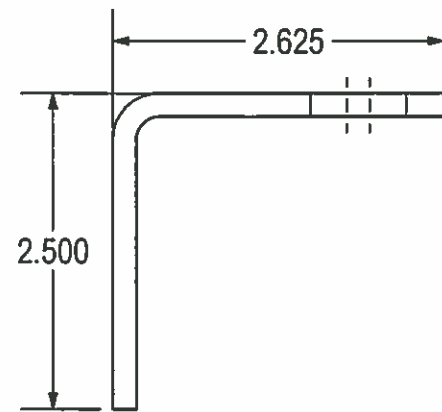


THE INFORMATION CONTAINED IN THIS DRAWING IS THE SOLE PROPERTY OF H<sup>2</sup> PRECAST INC. ANY REPRODUCTION IN PART OR WHOLE WITHOUT THE WRITTEN PERMISSION OF FM&M IS PROHIBITED.

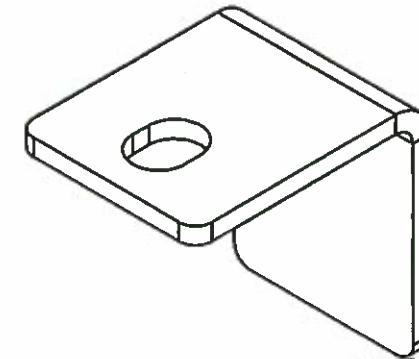
This assembly is constructed and tested to conform with WSDOT Standard Specification 9-29.2(2), Standard Duty Junction Boxes.

| REV | DESCRIPTION        | DATE | INITIALS |
|-----|--------------------|------|----------|
| A   | ADDED CHAMFER NOTE | 7/14 | DK       |

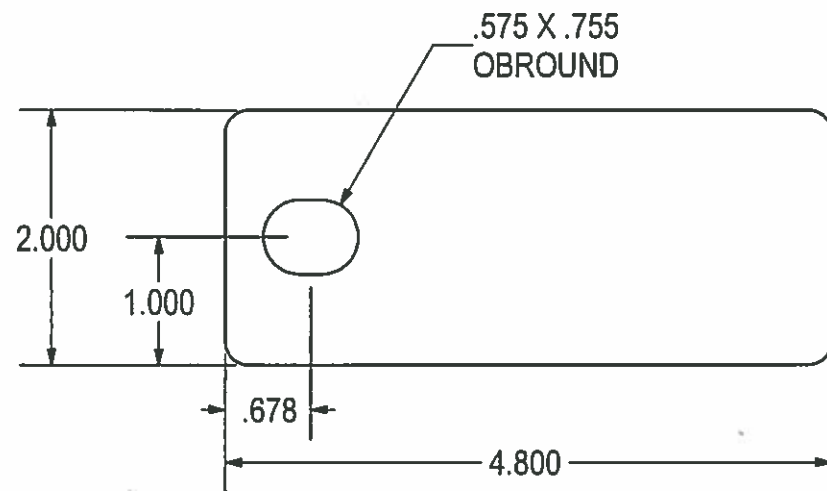
D  
C  
B  
A



BREAK EDGE  
(1/16" CHAMFER)  
TOP / EXTERIOR  
EDGES ONLY.  
(3X) EDGES.



FORMED DETAILS



FLAT PATTERN

**APPROVED**  
Washington State  
Department of Transportation  
HQ Traffic Operations Office  
DATE June 17, 2015 TAT

3/16HR - 4.800 X 2.000  
X = .325 @ 90° .188 R  
(1) REQ'D

THIS DRAWING CREATED FOR MANUFACTURING REFERENCE ONLY AND IS NOT INTENDED TO SUPERCEDE H<sup>2</sup> PRECAST INC. DRAWINGS OR SPECIFICATIONS OF THE REFERENCED PART.

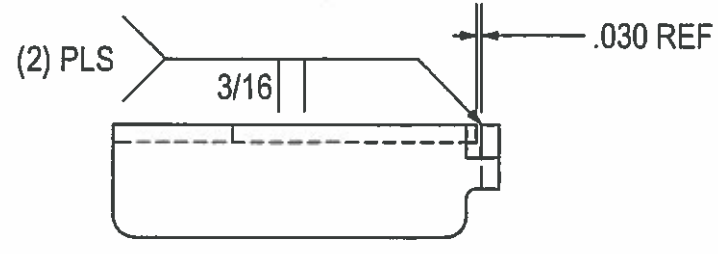
|               |             |                     |                          |        |
|---------------|-------------|---------------------|--------------------------|--------|
| HOLES ± 0.030 | SIZE A      | DRAWN BY: DREW KEIM | PROGRAM NUMBER: 716-L001 | REV. A |
| X.XXX ± 0.060 |             |                     | DATE CREATED: 5/21/12    |        |
| ANGLES ± 1.0° | SCALE: NONE | CAD FILE 716-L001A  | SHEET 1 of 1             |        |

8 7 6 5 4 3 2 1

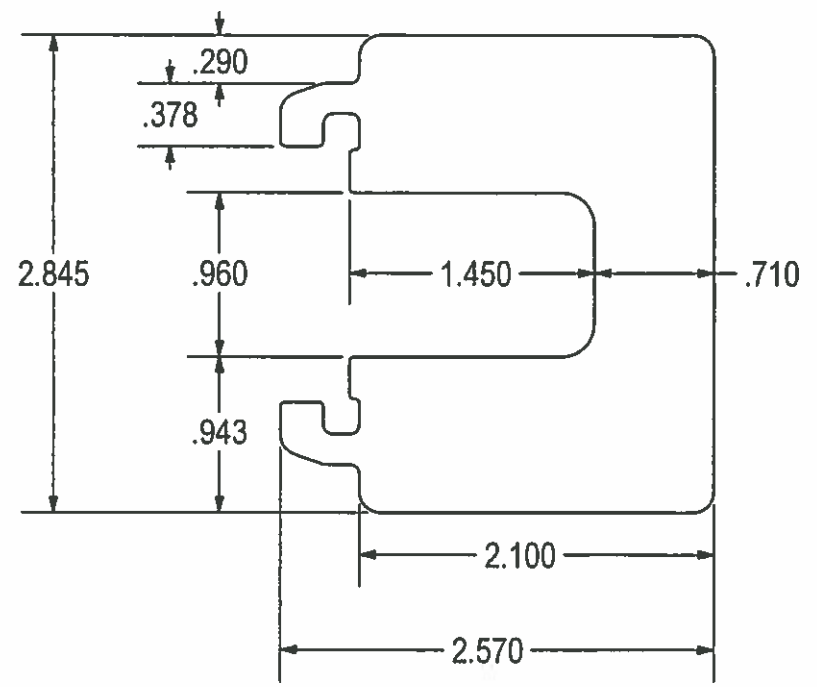
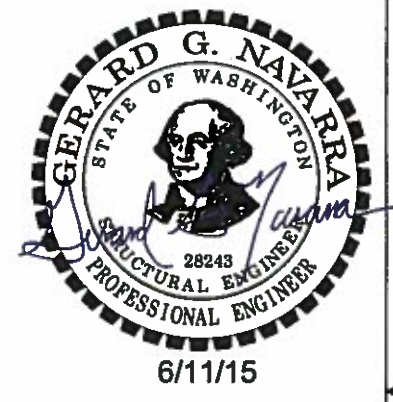
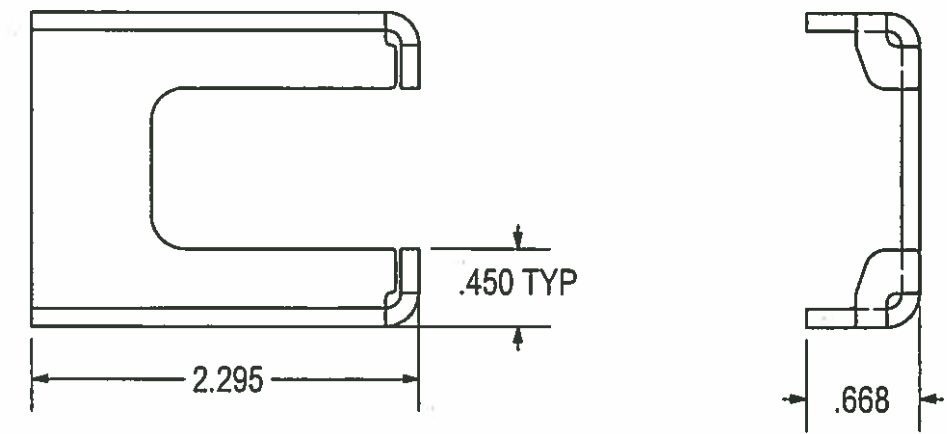
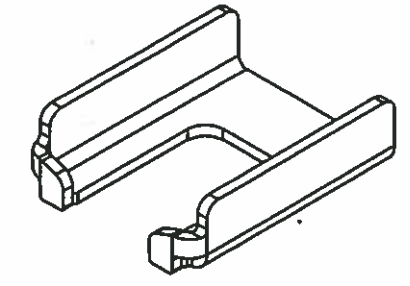
THE INFORMATION CONTAINED IN THIS DRAWING IS THE SOLE PROPERTY OF H<sup>2</sup> PRECAST INC. ANY REPRODUCTION IN PART OR WHOLE WITHOUT THE WRITTEN PERMISSION OF FM&M IS PROHIBITED.

This assembly is constructed and tested to conform with WSDOT Standard Specification 9-29.2(2), Standard Duty Junction Boxes.

| REV | DESCRIPTION                                | DATE | INITIALS |
|-----|--|------|----------|
| A   | REDESIGNED. SHORTENED. ADDED SIDE FLANGES. | 7/14 | DK       |



FORMED DETAILS



FLAT PATTERN

12 GA HR - 3.095 X 2.570  
 X = .175 @ 90° .090 R  
 (1) REQ'D

**APPROVED**  
 Washington State  
 Department of Transportation  
 HQ Traffic Operations Office  
 DATE June 17, 2015 TAT

Prepared for H<sup>2</sup> PRECAST INC.

LATCH GUIDE

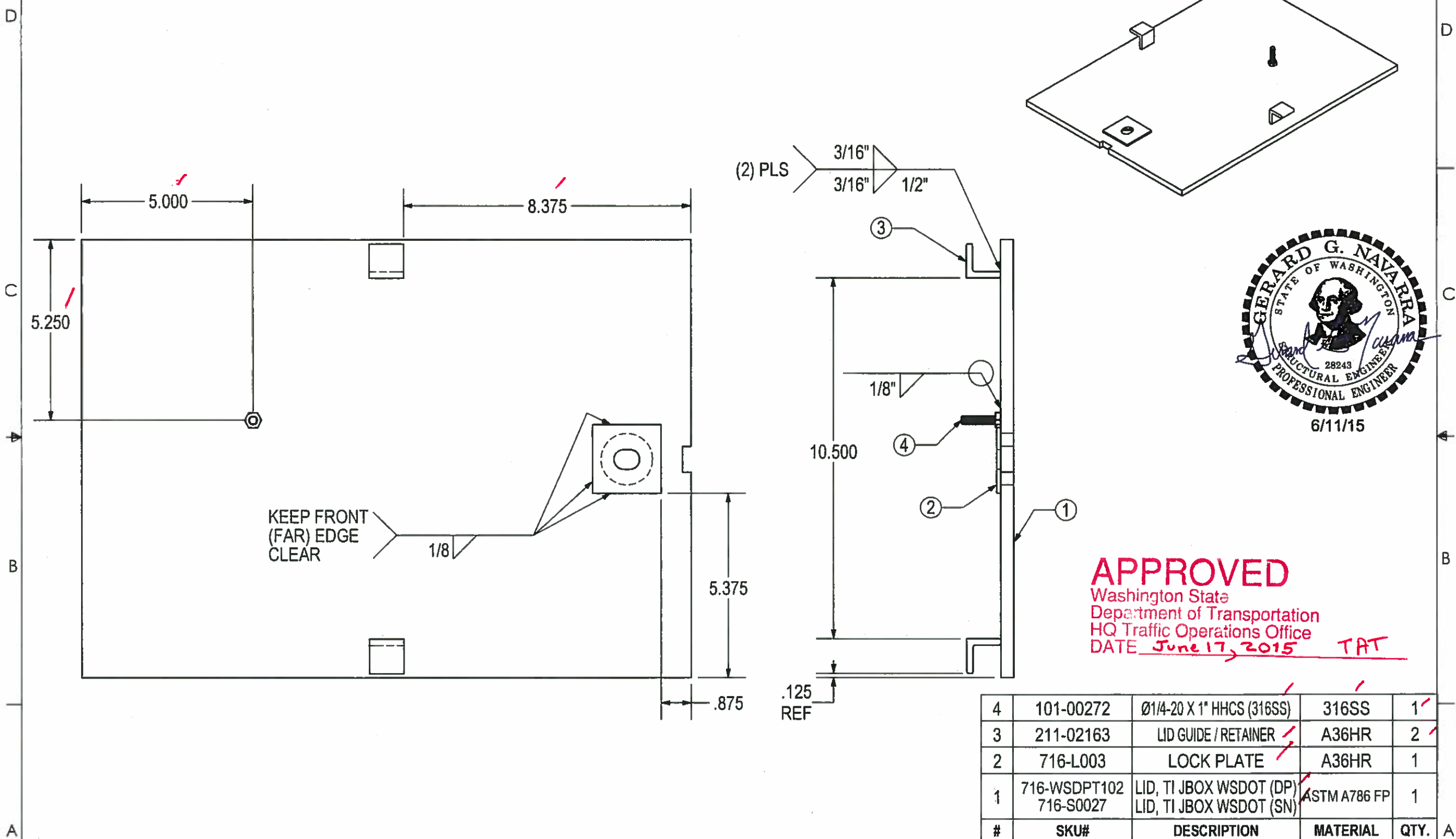
THIS DRAWING CREATED FOR MANUFACTURING REFERENCE ONLY AND IS NOT INTENDED TO SUPERCEDE H<sup>2</sup> PRECAST INC. DRAWINGS OR SPECIFICATIONS OF THE REFERENCED PART.

|               |             |                     |                          |        |
|---------------|-------------|---------------------|--------------------------|--------|
| HOLES ± 0.030 | SIZE A      | DRAWN BY: DREW KEIM | PROGRAM NUMBER: 716-L004 | REV. A |
| X.XXX ± 0.060 |             |                     | DATE CREATED: 5/21/12    |        |
| ANGLES ± 1.0° | SCALE: NONE | CAD FILE: 716-L004A | SHEET 1 of 1             |        |

8 7 6 5 4 3 2 1

THE INFORMATION CONTAINED IN THIS DRAWING IS THE SOLE PROPERTY OF H<sup>2</sup> PRECAST INC. ANY REPRODUCTION IN PART OR WHOLE WITHOUT THE WRITTEN PERMISSION OF FM&M IS PROHIBITED.

This assembly is constructed and tested to conform with WSDOT Standard Specification 9-29.2(2), Standard Duty Junction Boxes.



**APPROVED**  
 Washington State  
 Department of Transportation  
 HQ Traffic Operations Office  
 DATE June 17, 2015 TAT

| 4 | 101-00272                 | Ø1/4-20 X 1" HHCS (316SS)                          | 316SS        | 1    |
|---|---------------------------|--|--------------|------|
| 3 | 211-02163                 | LID GUIDE / RETAINER                               | A36HR        | 2    |
| 2 | 716-L003                  | LOCK PLATE   | A36HR        | 1    |
| 1 | 716-WSDPT102<br>716-S0027 | LID, TI JBOX WSDOT (DP)<br>LID, TI JBOX WSDOT (SN) | ASTM A786 FP | 1    |
| # | SKU#                      | DESCRIPTION  | MATERIAL     | QTY. |

**PARTS LIST**

UNIVERSAL DRAWING:  
 700-00001 WSDOT (DP)  
 700-00031 WSDOT (SN)

Prepared for H<sup>2</sup> PRECAST INC.  
**LID WELD ASSY, TYPE I JBOX WSDOT**  
 SIZE A  
 DRAWN BY: DREW KEIM  
 PROGRAM NUMBER: **700-00001 (DP)**  
 DATE CREATED: 4/28/14 **700-00031 (SN)**  
 SCALE: NONE  
 CAD FILE: LID, TI JBOX WSDOT  
 SHEET 1 of 1

THIS DRAWING CREATED FOR MANUFACTURING REFERENCE ONLY AND IS NOT INTENDED TO SUPERCEDE H<sup>2</sup> PRECAST INC. DRAWINGS OR SPECIFICATIONS OF THE REFERENCED PART.

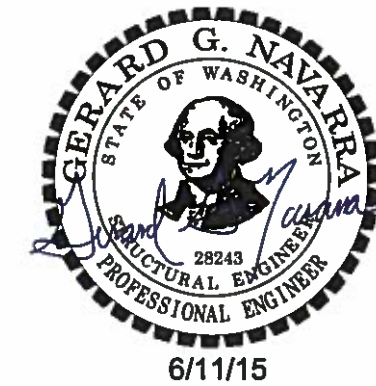
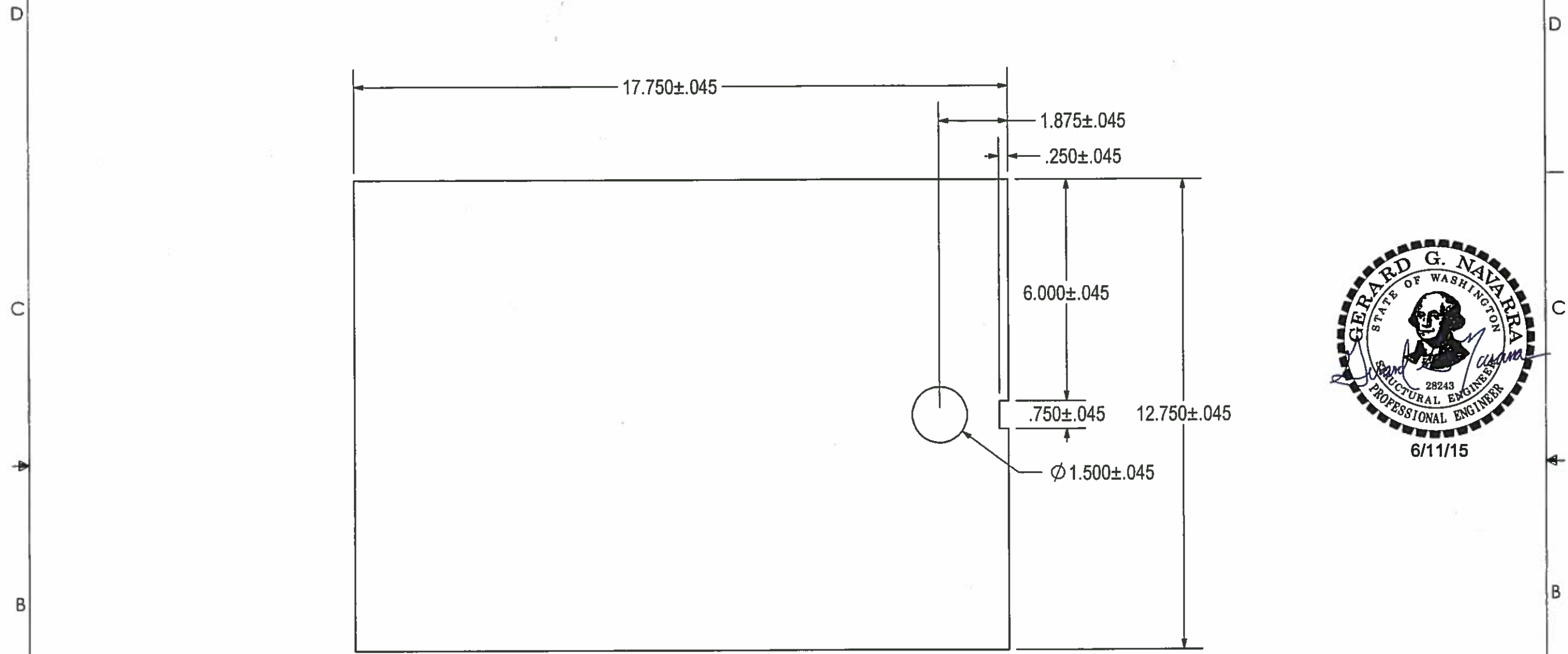
HOLES ± 0.030  
 X.XXX ± 0.060  
 ANGLES ± 1.0°



THE INFORMATION CONTAINED IN THIS DRAWING IS THE SOLE PROPERTY OF H<sup>2</sup> PRECAST INC. ANY REPRODUCTION IN PART OR WHOLE WITHOUT THE WRITTEN PERMISSION OF FM&M IS PROHIBITED.

This assembly is constructed and tested to conform with WSDOT Standard Specification 9-29.2(2), Standard Duty Junction Boxes.

| REV | DESCRIPTION   | DATE | INITIALS |
|-----|---|------|----------|
| A   | MODIFIED LIFTING NOTCH. 3/4x1/4 RECT WAS 1/2x1/2 OBR. | 7/14 | DK       |



**APPROVED**  
 Washington State  
 Department of Transportation  
 HQ Traffic Operations Office  
 DATE June 17, 2015 TAT

3/8 DIAMOND PLATE / SLIPNOT (ASTM A786 FLOOR PLATE)  
 17.750 X 12.750  
 (1) REQ'D

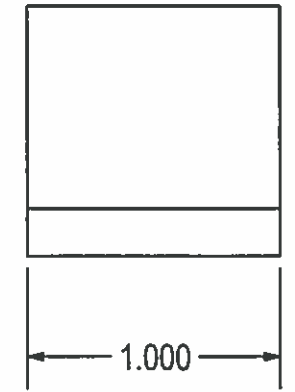
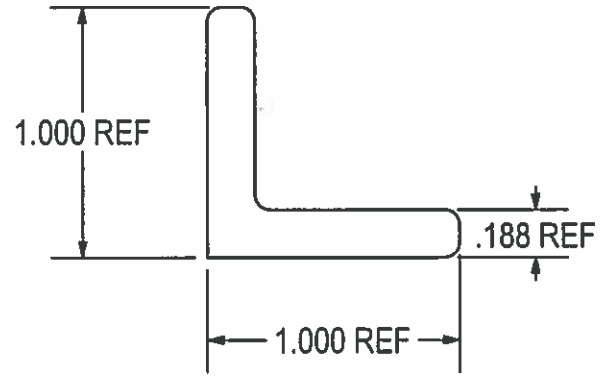
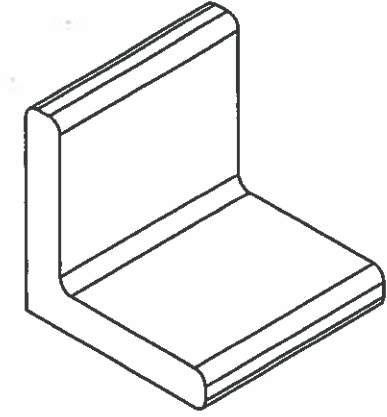
UNIVERSAL DWG:  
 716-WSDOT102 (DP)  
 716-S0027 (SN)

|  |                       |  |           |
|--|-----------------------|--|-----------|
| Prepared for H <sup>2</sup> PRECAST INC. |                       |  |           |
| DOOR W/ LOCK- WSDOT TYPE I J-BOX         |                       |  |           |
| SIZE<br>A                                | DRAWN BY:<br>DREW KEW | PROGRAM NUMBER:<br>DATE CREATED: 5/31/12 | REV.<br>A |
| SCALE: NONE                              | CAD FILE: 716-S0027A  | SHEET                                    | OF        |

THIS DRAWING CREATED FOR MANUFACTURING REFERENCE ONLY AND IS NOT INTENDED TO SUPERCEDE H<sup>2</sup> PRECAST INC. DRAWINGS OR SPECIFICATIONS OF THE REFERENCED PART.

THE INFORMATION CONTAINED IN THIS DRAWING IS THE SOLE PROPERTY OF H<sup>2</sup> PRECAST INC. ANY REPRODUCTION IN PART OR WHOLE WITHOUT THE WRITTEN PERMISSION OF FM&M IS PROHIBITED.

This assembly is constructed and tested to conform with WSDOT Standard Specification 9-29.2(2), Standard Duty Junction Boxes.

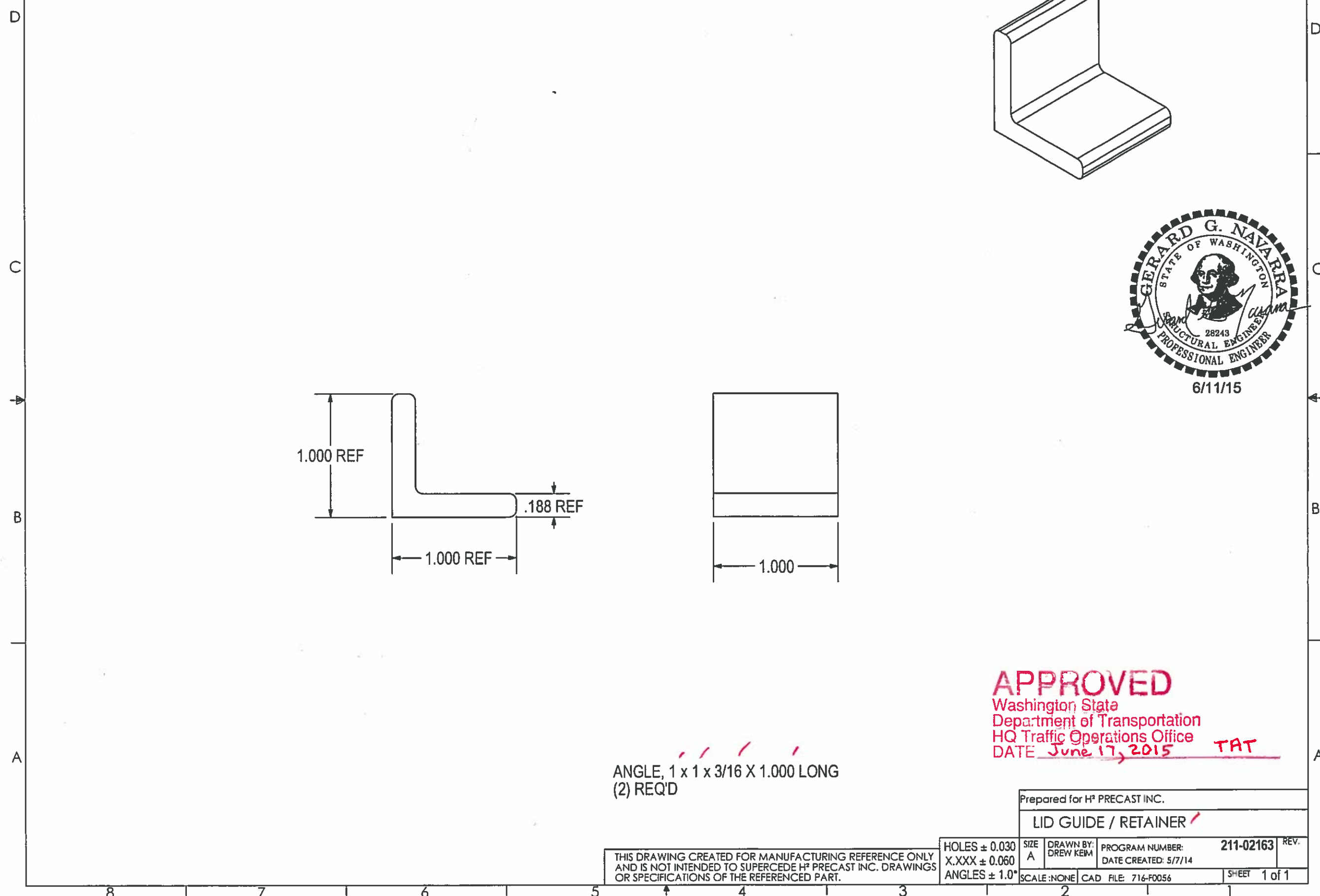


ANGLE, 1 x 1 x 3/16 X 1.000 LONG  
(2) REQ'D

**APPROVED**  
Washington State  
Department of Transportation  
HQ Traffic Operations Office  
DATE June 17, 2015 TAT

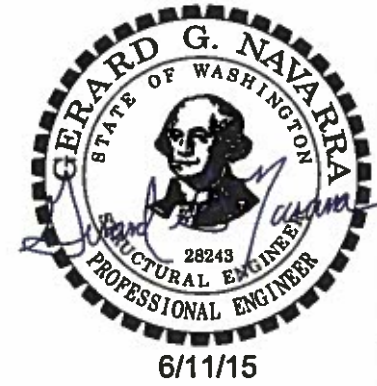
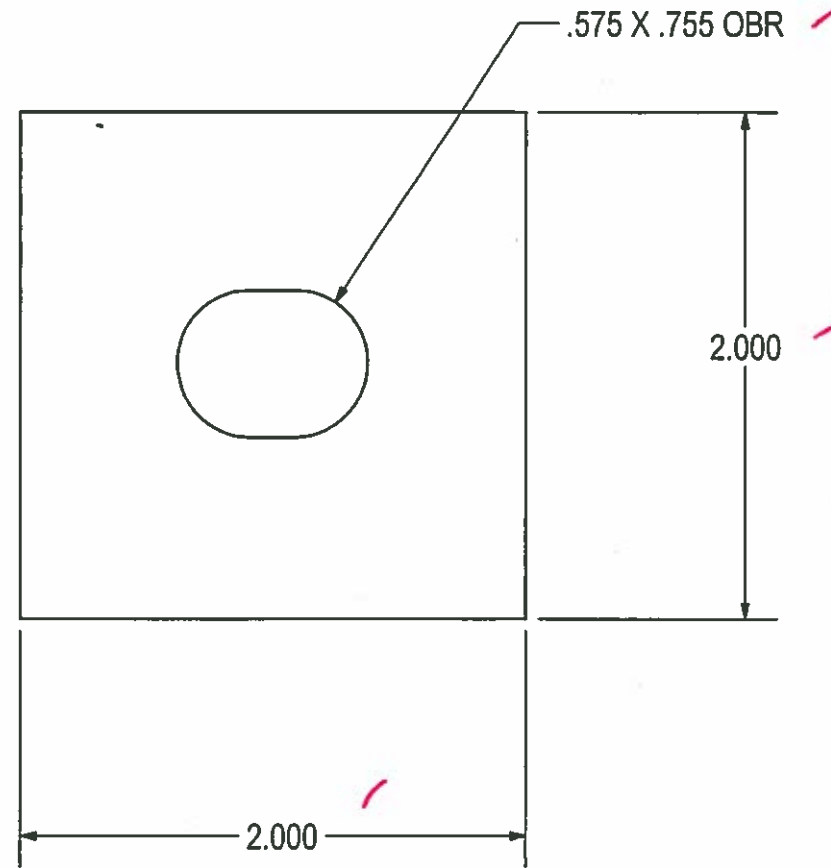
|   |                        |   |                |
|---|------------------------|---|----------------|
| Prepared for H <sup>2</sup> PRECAST INC.        |                        |   |                |
| LID GUIDE / RETAINER                            |                        |   |                |
| SIZE<br>A                                       | DRAWN BY:<br>DREW KEIM | PROGRAM NUMBER:<br>DATE CREATED: 5/7/14 | 211-02163 REV. |
| HOLES ± 0.030<br>X.XXX ± 0.060<br>ANGLES ± 1.0° | SCALE: NONE            | CAD FILE: 716-F0056                     | SHEET 1 of 1   |

THIS DRAWING CREATED FOR MANUFACTURING REFERENCE ONLY AND IS NOT INTENDED TO SUPERCEDE H<sup>2</sup> PRECAST INC. DRAWINGS OR SPECIFICATIONS OF THE REFERENCED PART.



THE INFORMATION CONTAINED IN THIS DRAWING IS THE SOLE PROPERTY OF H<sup>2</sup> PRECAST INC. ANY REPRODUCTION IN PART OR WHOLE WITHOUT THE WRITTEN PERMISSION OF FM&M IS PROHIBITED.

This assembly is constructed and tested to conform with WSDOT Standard Specification 9-29.2(2), Standard Duty Junction Boxes.



**APPROVED**  
Washington State  
Department of Transportation  
HQ Traffic Operations Office  
DATE June 17, 2015 **TAT**

1/8 HR - 2.000 X 2.000  
(1) REQ'D

THIS DRAWING CREATED FOR MANUFACTURING REFERENCE ONLY AND IS NOT INTENDED TO SUPERCEDE H<sup>2</sup> PRECAST INC. DRAWINGS OR SPECIFICATIONS OF THE REFERENCED PART.

|  |                        |  |               |
|--|------------------------|--|---------------|
| Prepared for H <sup>2</sup> PRECAST INC. |                        |  |               |
| LOCK PLATE ✓                             |                        |  |               |
| SIZE<br>A                                | DRAWN BY:<br>DREW KEIM | PROGRAM NUMBER:<br>DATE CREATED: 5/21/12 | 716-L003 REV. |
| SCALE: NONE                              | CAD FILE: 716-L003     | SHEET 1 of 1                             |               |

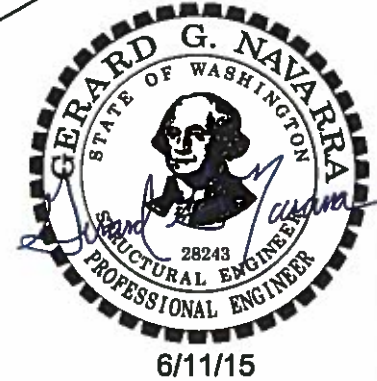
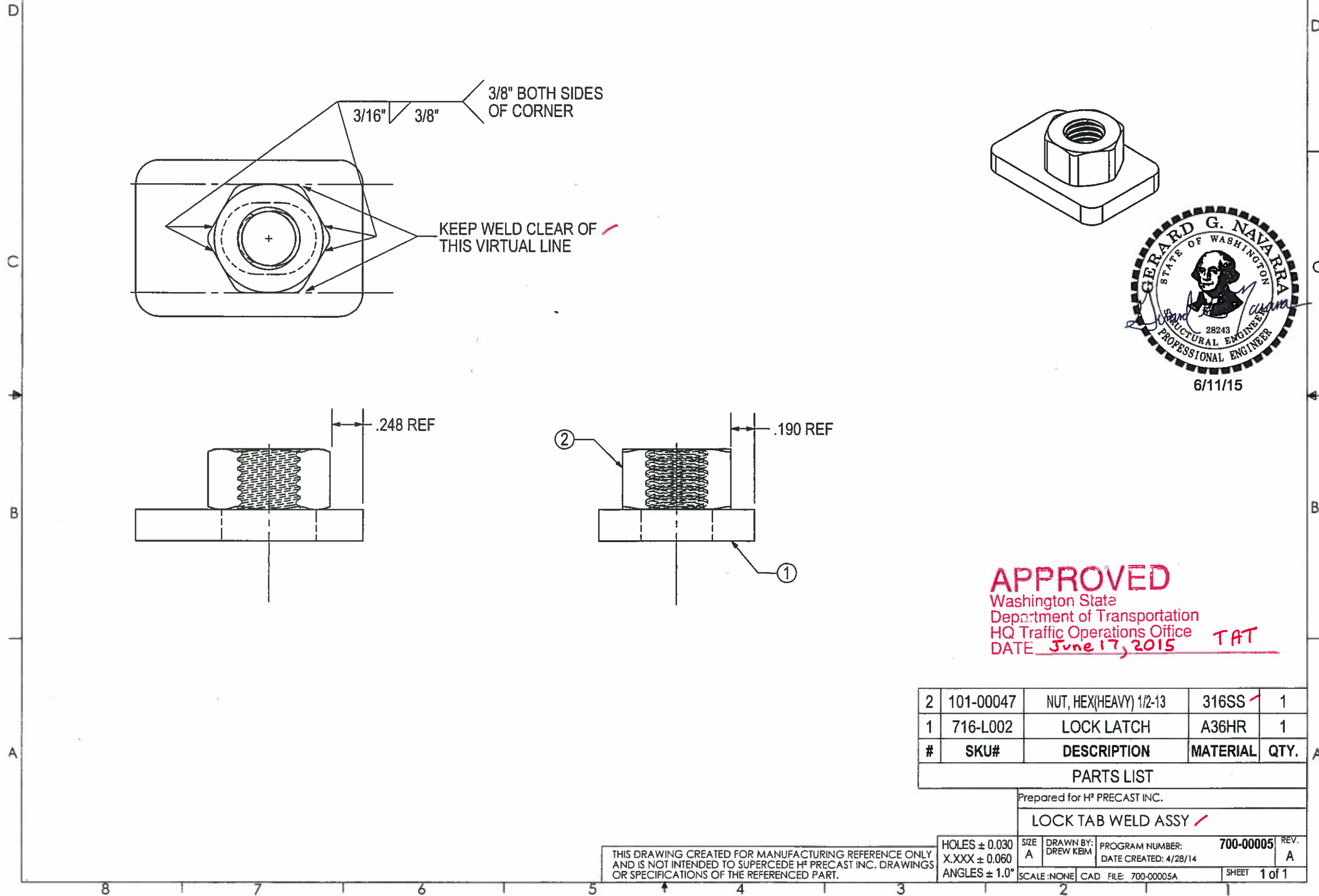
8 7 6 5 4 3 2 1



THE INFORMATION CONTAINED IN THIS DRAWING IS THE SOLE PROPERTY OF H<sup>2</sup> PRECAST INC. ANY REPRODUCTION IN PART OR WHOLE WITHOUT THE WRITTEN PERMISSION OF FM&M IS PROHIBITED.

This assembly is constructed and tested to conform with WSDOT Standard Specification 9-29.2(2), Standard Duty Junction Boxes.

| REV | DESCRIPTION                     | DATE | INITIALS |
|-----|---------------------------------|------|----------|
| A   | MODIFIED WELD NOTE. ADDED NOTE. | 7/14 | DK       |



**APPROVED**  
 Washington State  
 Department of Transportation  
 HQ Traffic Operations Office  
 DATE June 17, 2015 TAT

| # | SKU#      | DESCRIPTION            | MATERIAL | QTY. |
|---|-----------|------------------------|----------|------|
| 2 | 101-00047 | NUT, HEX(HEAVY) 1/2-13 | 316SS ✓  | 1    |
| 1 | 716-L002  | LOCK LATCH             | A36HR    | 1    |

**PARTS LIST**

Prepared for H<sup>2</sup> PRECAST INC.  
**LOCK TAB WELD ASSY** ✓

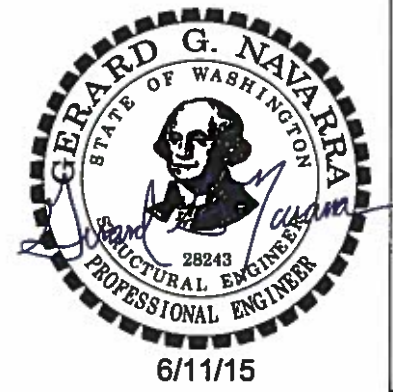
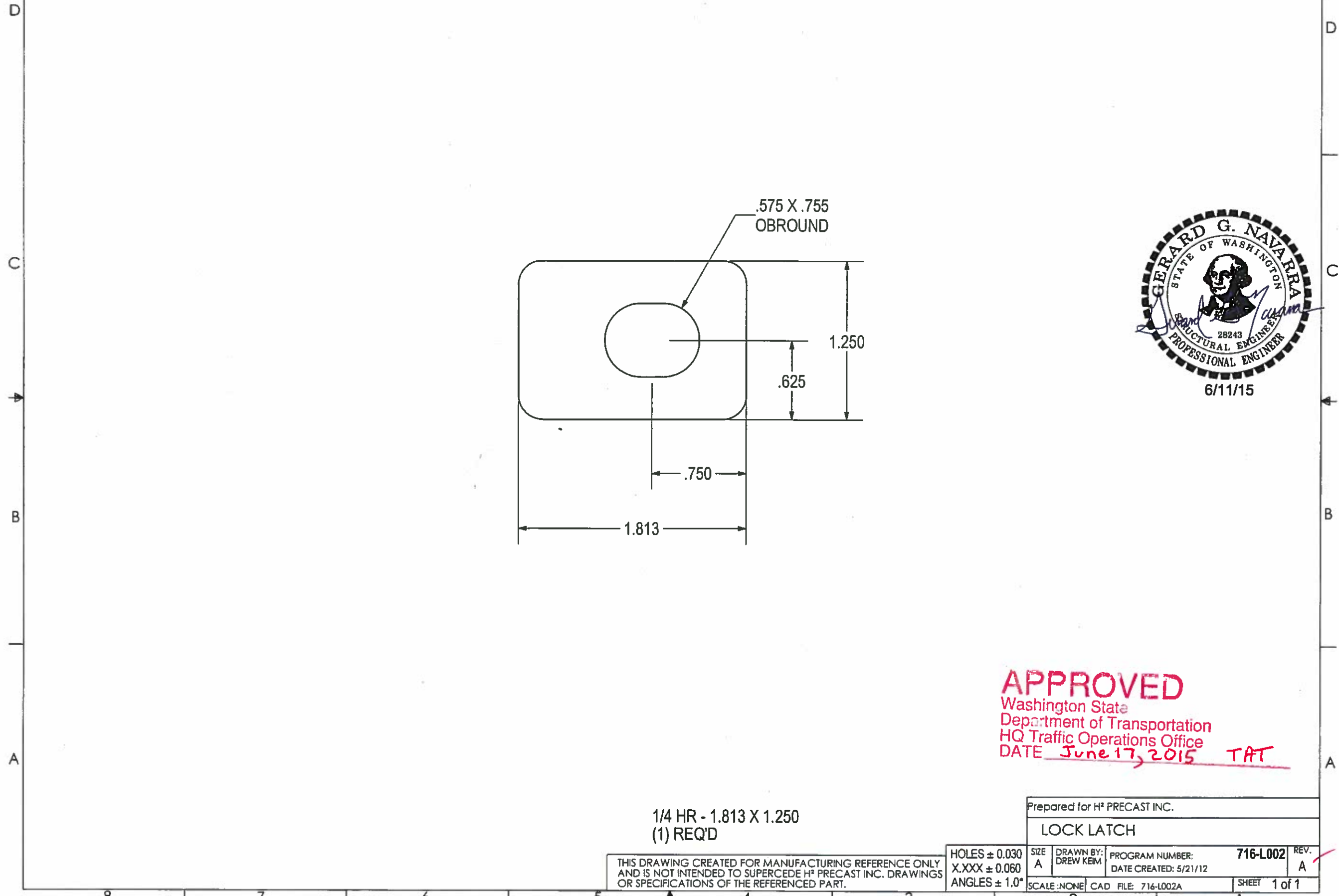
THIS DRAWING CREATED FOR MANUFACTURING REFERENCE ONLY AND IS NOT INTENDED TO SUPERCEDE H<sup>2</sup> PRECAST INC. DRAWINGS OR SPECIFICATIONS OF THE REFERENCED PART.

|               |             |                      |                           |        |
|---------------|-------------|----------------------|---------------------------|--------|
| HOLES ± 0.030 | SIZE A      | DRAWN BY: DREW KEIM  | PROGRAM NUMBER: 700-00005 | REV. A |
| X.XXX ± 0.060 |             |                      | DATE CREATED: 4/28/14     |        |
| ANGLES ± 1.0° | SCALE: NONE | CAD FILE: 700-00005A | SHEET 1 of 1              |        |

THE INFORMATION CONTAINED IN THIS DRAWING IS THE SOLE PROPERTY OF H<sup>2</sup> PRECAST INC. ANY REPRODUCTION IN PART OR WHOLE WITHOUT THE WRITTEN PERMISSION OF FM&M IS PROHIBITED.

This assembly is constructed and tested to conform with WSDOT Standard Specification 9-29.2(2), Standard Duty Junction Boxes.

| REV | DESCRIPTION         | DATE | INITIALS |
|-----|---------------------|------|----------|
| A   | 1/4" HR WAS 3/8" HR | '14  | DK       |



**APPROVED**  
 Washington State  
 Department of Transportation  
 HQ Traffic Operations Office  
 DATE June 17, 2015 TAT

1/4 HR - 1.813 X 1.250  
 (1) REQ'D

THIS DRAWING CREATED FOR MANUFACTURING REFERENCE ONLY AND IS NOT INTENDED TO SUPERCEDE H<sup>2</sup> PRECAST INC. DRAWINGS OR SPECIFICATIONS OF THE REFERENCED PART.

|   |                        |                             |           |
|---|------------------------|-----------------------------|-----------|
| Prepared for H <sup>2</sup> PRECAST INC.        |                        |                             |           |
| LOCK LATCH                                      |                        |                             |           |
| SIZE<br>A                                       | DRAWN BY:<br>DREW KEIM | PROGRAM NUMBER:<br>716-L002 | REV.<br>A |
| HOLES ± 0.030<br>X.XXX ± 0.060<br>ANGLES ± 1.0° |                        | DATE CREATED: 5/21/12       |           |
| SCALE: NONE                                     | CAD FILE: 716-L002A    | SHEET 1 of 1                |           |