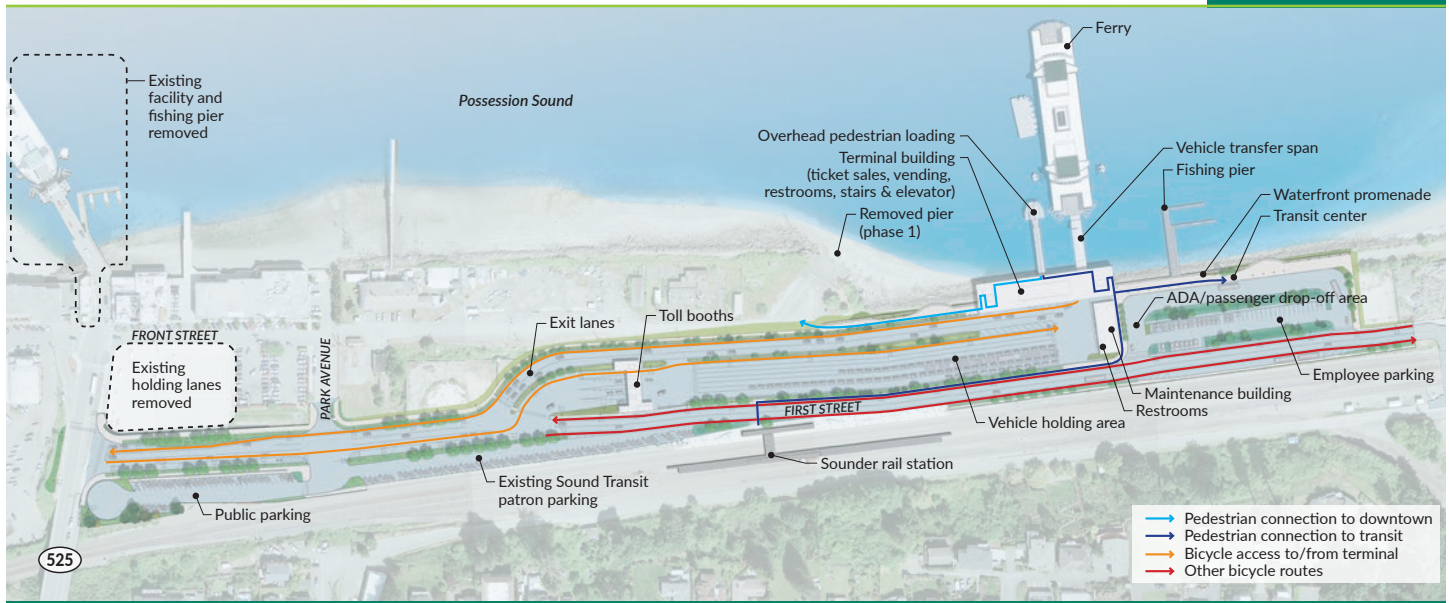


Mukilteo Multimodal Project Fact sheet



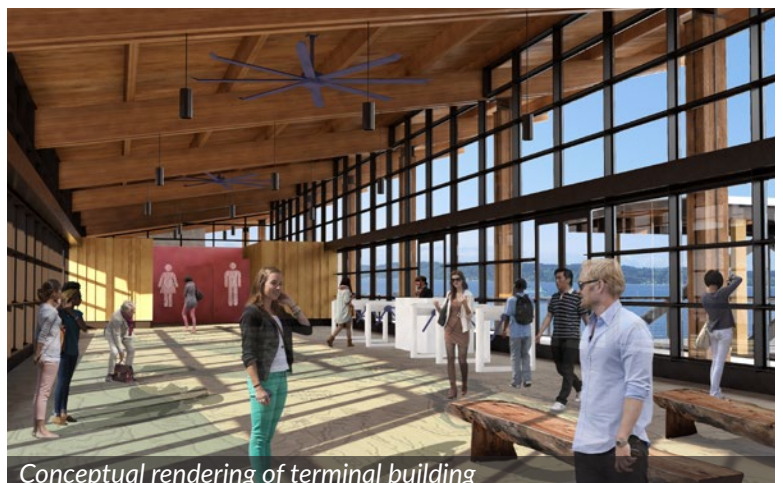
Why does the Mukilteo ferry terminal need to be replaced?

More than 4 million people travel on the Mukilteo/Clinton ferry route each year. The current Mukilteo ferry terminal was not built to withstand earthquakes and the layout makes it difficult for passengers to get in and out of the terminal. This contributes to traffic congestion, safety concerns, and conflicts between vehicle and pedestrian traffic.

What work is included in this project?

Washington State Ferries (WSF) is relocating the Mukilteo ferry terminal to the tank farm site, one-third of a mile east of the existing terminal. The project:

- Provides new passenger, maintenance, and supervisor buildings, and four new toll booths.
- Improves safety and efficiency with overhead passenger loading.
- Includes a new signalized intersection and expanded vehicle holding area to reduce congestion on SR 525.
- Improves connections to transit with a new transit center and location near the Sounder Commuter Rail Station.
- Removed the tank farm pier eliminating thousands of tons of toxic creosote treated debris from Puget Sound.



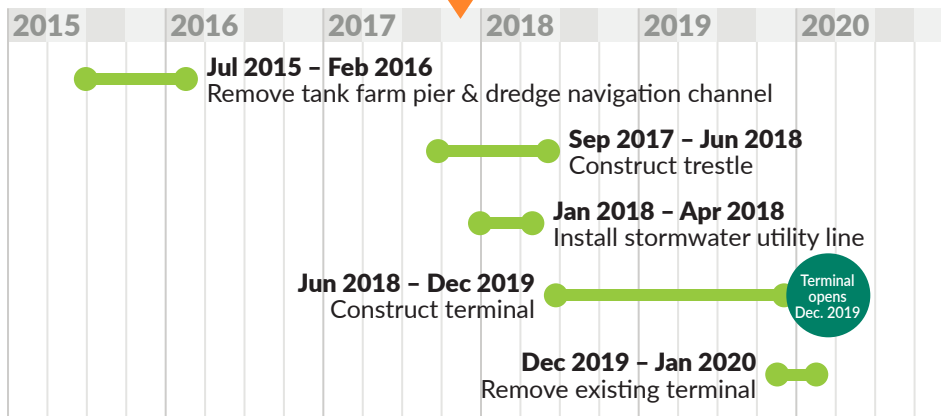


Mukilteo Multimodal Project

What's happening now?

Construction on the trestle and bridge seat is underway and is expected to be complete in June 2018, around the time that construction of the main terminal building will begin. The new terminal is scheduled to open in late 2019.

Construction timeline



What's next?

WSF expects to begin the next phase of construction, the deep stormwater utility line, in January 2018. Please continue checking the project website and sign-up to receive email updates for more information.

Financial information

The Mukilteo Multimodal Project will cost approximately \$139 million and will be paid for by a mix of federal and state funds.

Mukilteo/Clinton Ferry Route Characteristics

- 2-boat service
- 20 minute crossing
- Sailings every 30 minutes
- 2.2 million vehicles per year;
4.1 million total riders per year

How will this project benefit ferry riders and the communities WSF serves?

This project improves transportation between Whidbey Island and the mainland by providing safe, reliable, and efficient ferry service. The project will:

- Offer better and safer access for pedestrians, vehicles and bicycles.
- Improve the efficiency and reliability of ferry operations, including vehicle and passenger loading and unloading.
- Improve transit connections for riders who travel without a car.

For More Information

www.wsdot.wa.gov/projects/ferries/mukilteoterminal/multimodal

Taylor Knowles

Construction Communications Lead

knowlet@consultant.wsdot.wa.gov

Project hotline: 425-367-8997



The Mukilteo/Clinton route is WSF's busiest route for vehicle traffic and has the second highest total ridership, serving more than 4.1 million riders.

ADA Statement: It is the Washington State Department of Transportation's (WSDOT) policy to assure that no person shall, on the basis of disability, be excluded from participation in, be denied the benefits of, or otherwise discriminated against under any of its programs, services, or activities. Any person who believes their Americans with Disabilities protection has been violated may file a complaint with WSDOT's Office of Equal Opportunity (OEO). For additional information regarding ADA complaint procedures and/or information regarding our non-discrimination obligations, please contact Larry Watkinson, WSDOT ADA Compliance Manager, at wsdotada@wsdot.wa.gov or by calling toll free 855-362-4ADA (4232). Persons who are deaf or hard of hearing may make a request by calling the Washington State Relay at 711.

Request for Reasonable Modification: WSDOT will modify its policies, practices, and procedures to ensure individuals with disabilities have an equal opportunity to participate in the programs, services, or activities unless the modification fundamentally alters the program, service, or activity, creates a safety concern, or is not otherwise required by the ADA. Requests for modification can be made to any WSDOT employee or at wsdotada@wsdot.wa.gov or by calling toll free 855-362-4ADA (4232).

Title VI Notice to the Public: It is WSDOT policy to assure that no person shall, on the grounds of race, color, national origin, or sex, as provided by Title VI of the Civil Rights Act of 1964, be excluded from participation in, be denied the benefits of, or be otherwise discriminated against under any of its federally-funded programs and activities. Any person who believes his/her Title VI protection has been violated may file a complaint with WSDOT's Office of Equal Opportunity (OEO). For additional information regarding Title VI complaint procedures and/or information regarding our non-discrimination obligations, please contact OEO's Title VI Coordinator at 360-705-7090.