



Pontoons that supported the drawspan on the old floating bridge are the last to remain in their original position prior to being towed from Lake Washington. Photo taken: Oct. 8



Pontoon A, the westernmost pontoon of the old floating bridge, is separated from longtime neighbor Pontoon B. Both pontoons were later towed intact off Lake Washington through the Ballard locks. Photo taken: Oct. 6

Americans with Disabilities Act (ADA) Information: This material can be made available in an alternate format by emailing the Office of Equal Opportunity at wsdotada@wsdot.wa.gov or by calling toll free, 855-362-4ADA(4232). Persons who are deaf or hard of hearing may make a request by calling the Washington State Relay at 711.

Title VI Notice to Public: It is the Washington State Department of Transportation's (WSDOT) policy to assure that no person shall, on the grounds of race, color, national origin or sex, as provided by Title VI of the Civil Rights Act of 1964, be excluded from participation in, be denied the benefits of, or be otherwise discriminated against under any of its federally funded programs and activities. Any person who believes his/her Title VI protection has been violated, may file a complaint with WSDOT's Office of Equal Opportunity (OEO). For additional information regarding Title VI complaint procedures and/or information regarding our non-discrimination obligations, please contact OEO's Title VI Coordinator at (360) 705-7082.

Visit us online: bit.ly/520Flickr



SR 520 construction update



Crews remove girders from the old floating bridge approach in Medina. Photo taken: Oct. 7

West Approach Bridge North construction activities



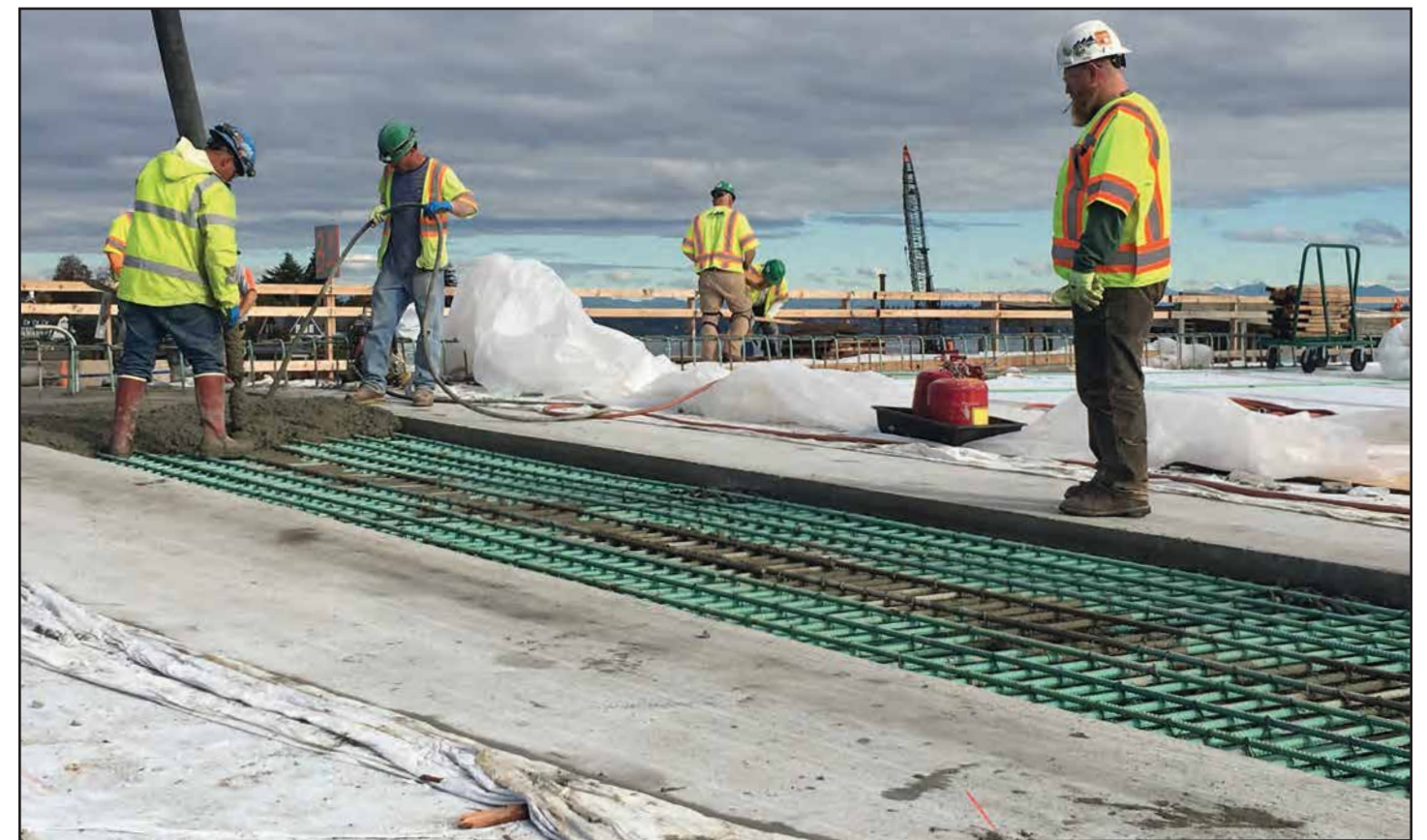
A grid of rebar awaits concrete pours for the West Approach Bridge North roadway deck. Photo taken: Oct. 8



During an Oct. 7 - 10 closure of SR 520, crews begin installing railing at the westbound Montlake Boulevard interchange transit flyer stop. Photo taken: Oct. 10



Crews position a concrete boom on the westbound lanes of the new floating bridge in order to pour a section of roadway deck for the new West Approach Bridge North. Photo taken: Oct. 10



Crews pour concrete for an intermediate diaphragm on the West Approach Bridge North. The diaphragm stabilizes the bridge's roadway and provides earthquake reinforcement. Photo taken: Oct. 28