



# SR 520 Bridge Replacement and HOV Program



## SR 520 construction update: September 2012

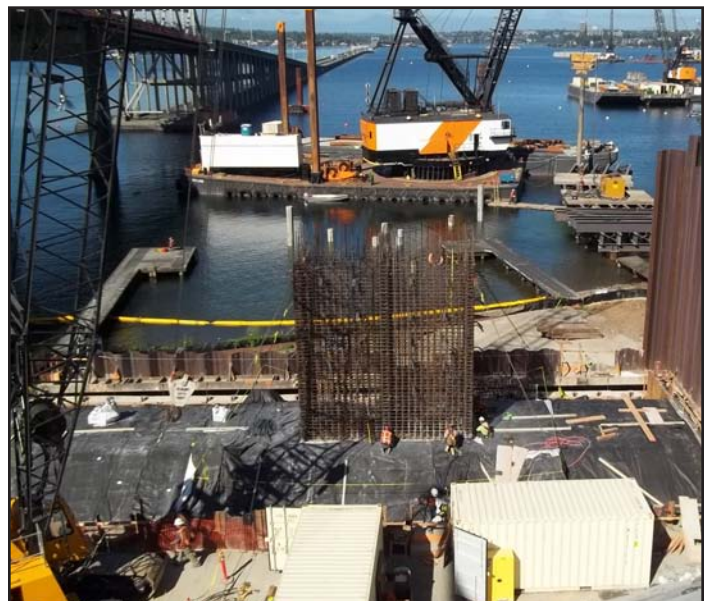
### Floating bridge construction



*Construction barges complete work alongside new pontoons on Lake Washington.*



*Crews place concrete at the construction site in Kenmore, WA.*



*East approach pier construction under way in Medina, WA.*



## Eastside construction

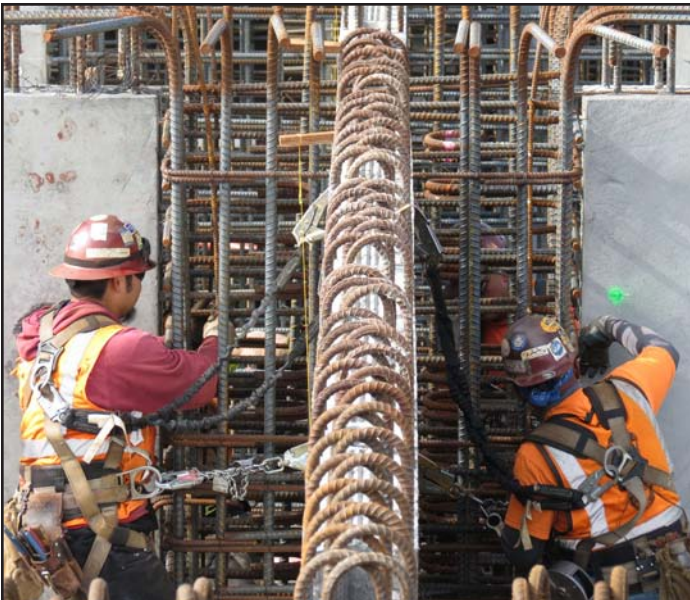


*Crews remove a wall form after pouring concrete for a pier wall that supports the new 84th Avenue Northeast lid.*



*Crews place a section of a fish-friendly culvert near 108th Avenue Northeast during a weekend closure in September.*

## Pontoon construction



*Two workers tie rebar next to precast interior walls in a cycle 2 pontoon in progress.*



*Precast interior walls in a pontoon in Aberdeen, WA.*

**Americans with Disabilities Act (ADA):** This material can be made available in an alternate format by emailing the WSDOT Diversity/ADA Compliance Team at [wsdotada@wsdot.wa.gov](mailto:wsdotada@wsdot.wa.gov) or by calling toll free, 855-362-4ADA (4232). Persons who are deaf or hard of hearing may make a request by calling the Washington State Relay at 711.

**Title VI Information:** WSDOT ensures full compliance with Title VI of the Civil Rights Act of 1964 by prohibiting discrimination against any person on the basis of race, color, national origin or sex in the provision of benefits and services resulting from its federally assisted programs and activities. For questions regarding WSDOT's Title VI Program contact Jonté Sulton at 360-705-7082 or [SultonJ@wsdot.wa.gov](mailto:SultonJ@wsdot.wa.gov).

Visit us online: [wsdot.wa.gov/projects/SR520Bridge](https://www.wsdot.wa.gov/projects/SR520Bridge)