

Construction activities in Tacoma



Crews in Tacoma pour concrete to complete soffit installation on one of eight supplemental stability pontoons currently under construction. This is the sixth and final cycle of pontoon construction in Tacoma. Photo taken Oct. 24, 2014.

Pontoon movements



Pontoon GNW was one of nine pontoons to arrive in Seattle during the month of October. Photo taken Oct. 4, 2014.

Americans with Disabilities Act (ADA) information: This material can be made available in an alternate format by emailing the WSDOT Diversity/ADA Affairs team at wsdotada@wsdot.wa.gov or by calling toll free, 855-362-4ADA(4232). Persons who are deaf or hard of hearing may make a request by calling the Washington State Relay at 711.

Title VI Notice to Public: It is the Washington State Department of Transportation's (WSDOT) policy to assure that no person shall, on the grounds of race, color, national origin or sex, as provided by Title VI of the Civil Rights Act of 1964, be excluded from participation in, be funded programs and activities. Any person who believes his/her Title VI protection has been violated, may file a complaint with WSDOT's Office of Equal Opportunity (OEO). For additional information regarding Title VI complaint procedures and/or information regarding our non-discrimination obligations, please contact OEO's Title VI Coordinators, or Jonté Robinson at (360) 705-7082.

Visit us online: <http://bit.ly/520Flickr>

SR 520 construction update: October 2014

West Approach Bridge North



During the Oct. 17 – 20 weekend closure, crews used cranes to remove the first girder of the R.H. Thomson "Ramps to Nowhere". Photo taken Oct. 18, 2014.



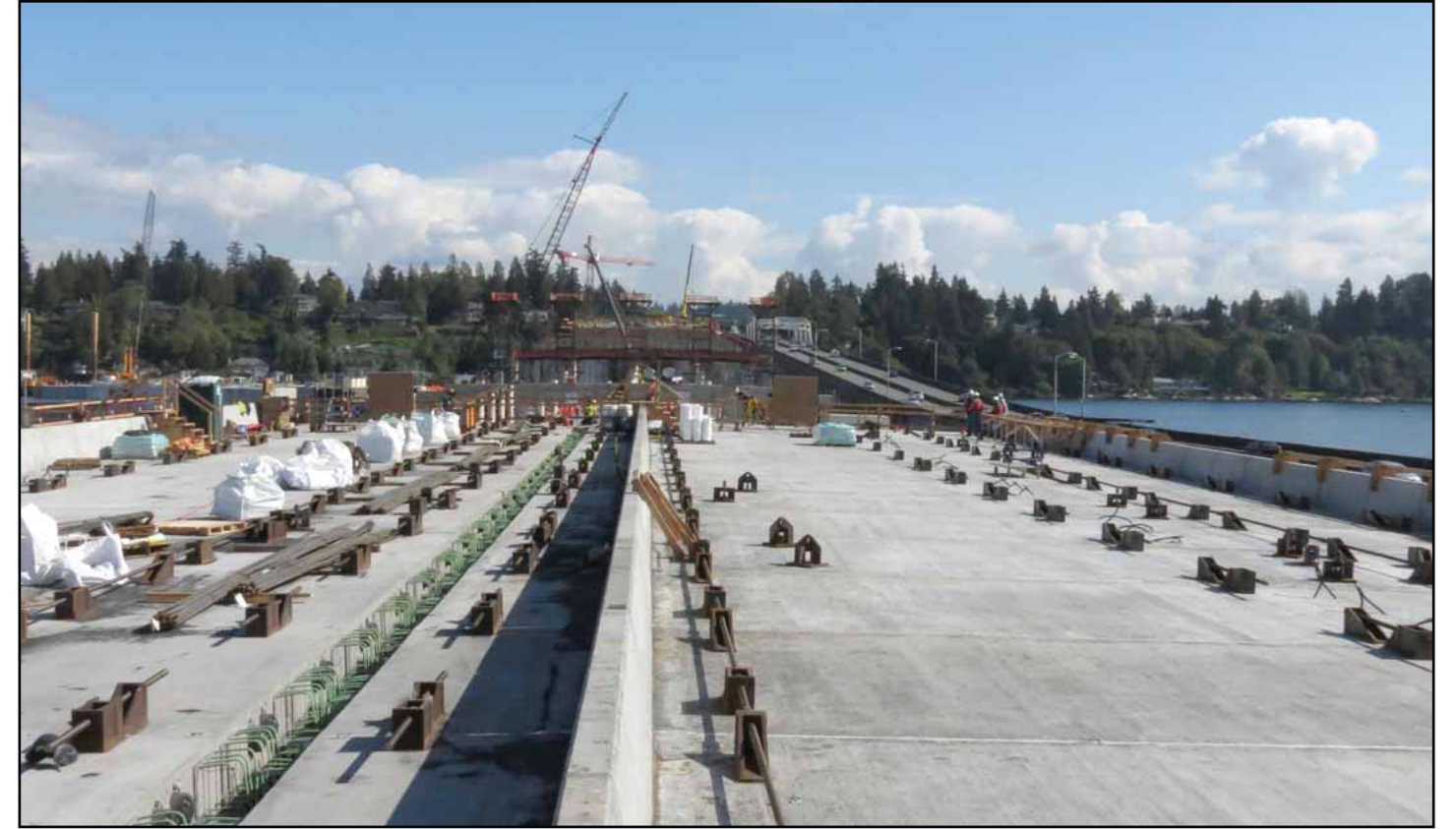
During the Oct. 17 – 20 weekend closure, workers installed piles on Foster Island for a work bridge to be used during construction of the new West Approach Bridge North. Photo taken Oct. 18, 2014.

Eastside construction



Crews installed landscaping on the new 84th Avenue Northeast lid on the Eastside during the month of October. Photo taken Oct. 29, 2014.

Floating bridge and landings construction



In the month of October, new roadway for the low-rise section of the new floating bridge took shape as crews installed over 35 roadway deck sections. Photo taken Oct. 1, 2014.



During the Oct. 17 – 20 weekend closure, crews on the Eastside painted HOV lane symbols and other roadway markings. Photo taken Oct. 19, 2014.



The new floating bridge takes shape as crews on Lake Washington joined longitudinal pontoons and installed over 35 new low-rise roadway deck sections. Photo courtesy of Aequalis Photography. Photo taken Oct. 29, 2014.