

Floating Bridge and Landings construction activities



Crews complete one of the four sentinels on the new floating bridge Photo taken: Jan. 5



SR 520 Program Administrator, Julie Meredith, announces plans for the Grand Opening of the SR 520 Floating Bridge scheduled on April 2-3. Photo taken: Jan. 12



Crews continued to build the Pontoon A north sentinel throughout January. Photo taken: Jan. 18

Americans with Disabilities Act (ADA) information: This material can be made available in an alternate format by emailing the WSDOT Diversity/ADA Affairs team at wsdotada@wsdot.wa.gov or by calling toll free, 855-362-4ADA(4232). Persons who are deaf or hard of hearing may make a request by calling the Washington State Relay at 711.

Title VI Notice to Public: It is the Washington State Department of Transportation's (WSDOT) policy to assure that no person shall, on the grounds of race, color, national origin or sex, as provided by Title VI of the Civil Rights Act of 1964, be excluded from participation in, be funded programs and activities. Any person who believes his/her Title VI protection has been violated, may file a complaint with WSDOT's Office of Equal Opportunity (OEO). For additional information regarding Title VI complaint procedures and/or information regarding our non-discrimination obligations, please contact OEO's Title VI Coordinators, or Jonté Robinson at (360) 705-7082.

Visit us online: <http://bit.ly/520Flickr>

SR 520 construction update: January 2016

Floating Bridge and Landings construction activities



Aerial view of SR 520 Floating Bridge and Landings at Medina, facing west. Photo taken: Jan. 7

West Approach Bridge North construction activities



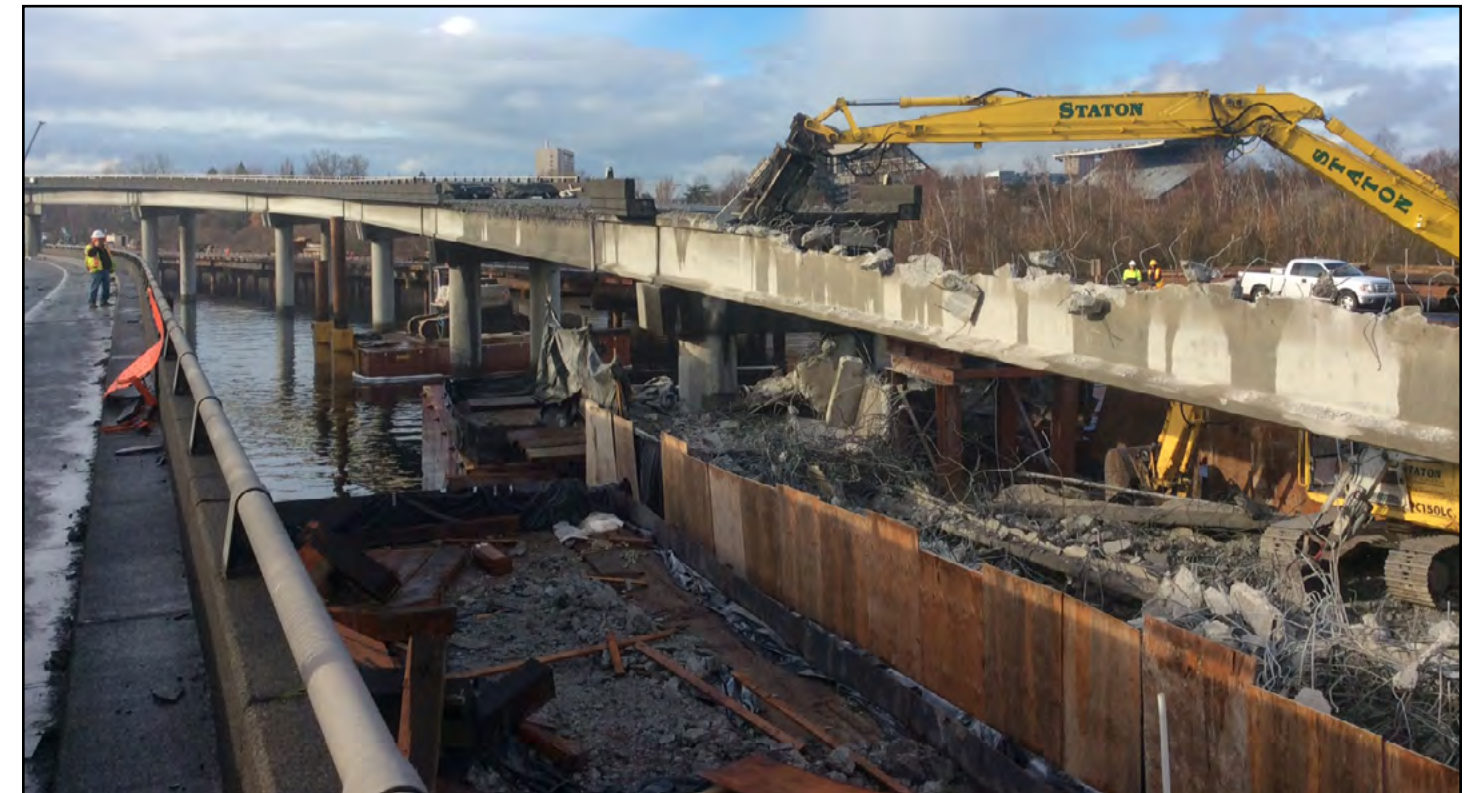
Crews continue to make progress on the WABN project, pouring columns east of Foster Island. By the end of January, crews had poured 28 columns for the permanent WABN structure. Photo taken: Jan. 20



Aerial view of new westbound SR 520 off-ramp to 24th Avenue East, opened to traffic on Wednesday, Jan. 6. Photo taken: Jan. 7



Crews install falsework to support girders while the roadway concrete is poured. Photo taken: Jan. 28



Crews begin removing spans of the westbound SR 520 off-ramp to Lake Washington Boulevard to make way for the new WABN structure. Photo taken: Jan. 31