



Crews reach the final stage of dismantling the superstructure - the concrete columns and elevated roadway deck - from the old floating bridge's pontoons C, D, X and Y. Photo taken: Nov. 8



Near Medina, a barge-mounted crane continues underwater removal of concrete columns from the old floating bridge. The new bridge's maintenance facility can be seen, at left, under the east landing. Photo taken: Nov. 3

Americans with Disabilities Act (ADA) Information: This material can be made available in an alternate format by emailing the Office of Equal Opportunity at wsdotada@wsdot.wa.gov or by calling toll free, 855-362-4ADA(4232). Persons who are deaf or hard of hearing may make a request by calling the Washington State Relay at 711.

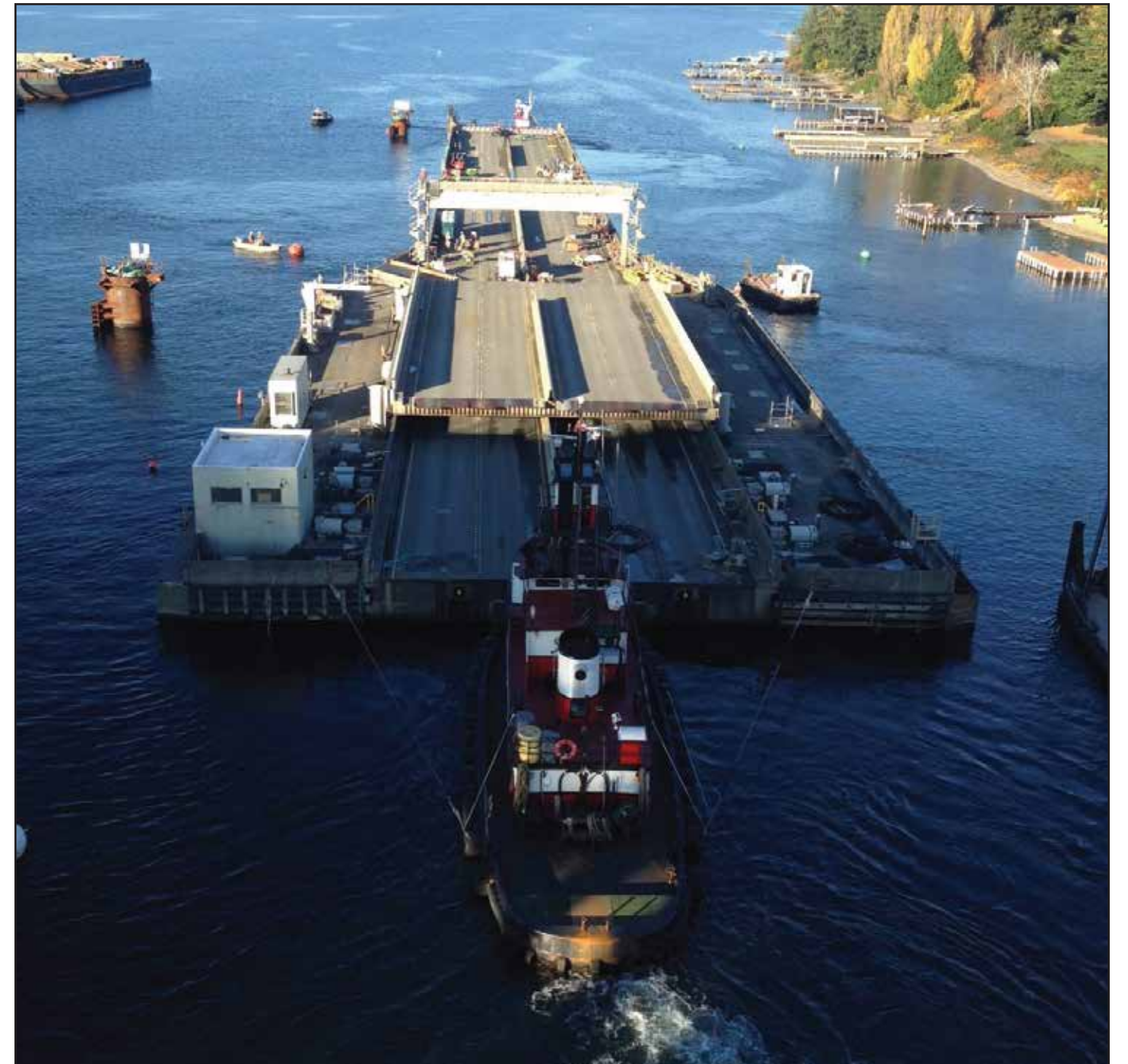
Title VI Notice to Public: It is the Washington State Department of Transportation's (WSDOT) policy to assure that no person shall, on the grounds of race, color, national origin or sex, as provided by Title VI of the Civil Rights Act of 1964, be excluded from participation in, be denied the benefits of, or be otherwise discriminated against under any of its federally funded programs and activities. Any person who believes his/her Title VI protection has been violated, may file a complaint with WSDOT's Office of Equal Opportunity (OEO). For additional information regarding Title VI complaint procedures and/or information regarding our non-discrimination obligations, please contact OEO's Title VI Coordinator at (360) 705-7082.

Visit us online: bit.ly/520Flickr



SR 520 construction update

Floating Bridge and Landings construction activities



A tugboat tows the east half of the old floating bridge drawspan to a staging area on Lake Washington, where the drawspan's pontoons will be separated and then towed from the lake. Photo taken: Nov. 8

West Approach Bridge North construction activities



Crews install rebar to reinforce the concrete roadway deck of the West Approach Bridge North. Photo taken: Nov. 4



Crews remove falsework from under the West Approach Bridge North. The falsework supports the bridge's girders until roadway deck is poured. Photo taken: Nov. 23



A gray day in Montlake complements these gray, 150-foot-long concrete girders, which form the backbone of the 1.2-mile-long West Approach Bridge North. Photo taken: Nov. 11



Concrete columns for the West Approach Bridge North are topped with seismic isolation bearings, which allow each section of the bridge to move independently during an earthquake. Photo taken: Nov. 17