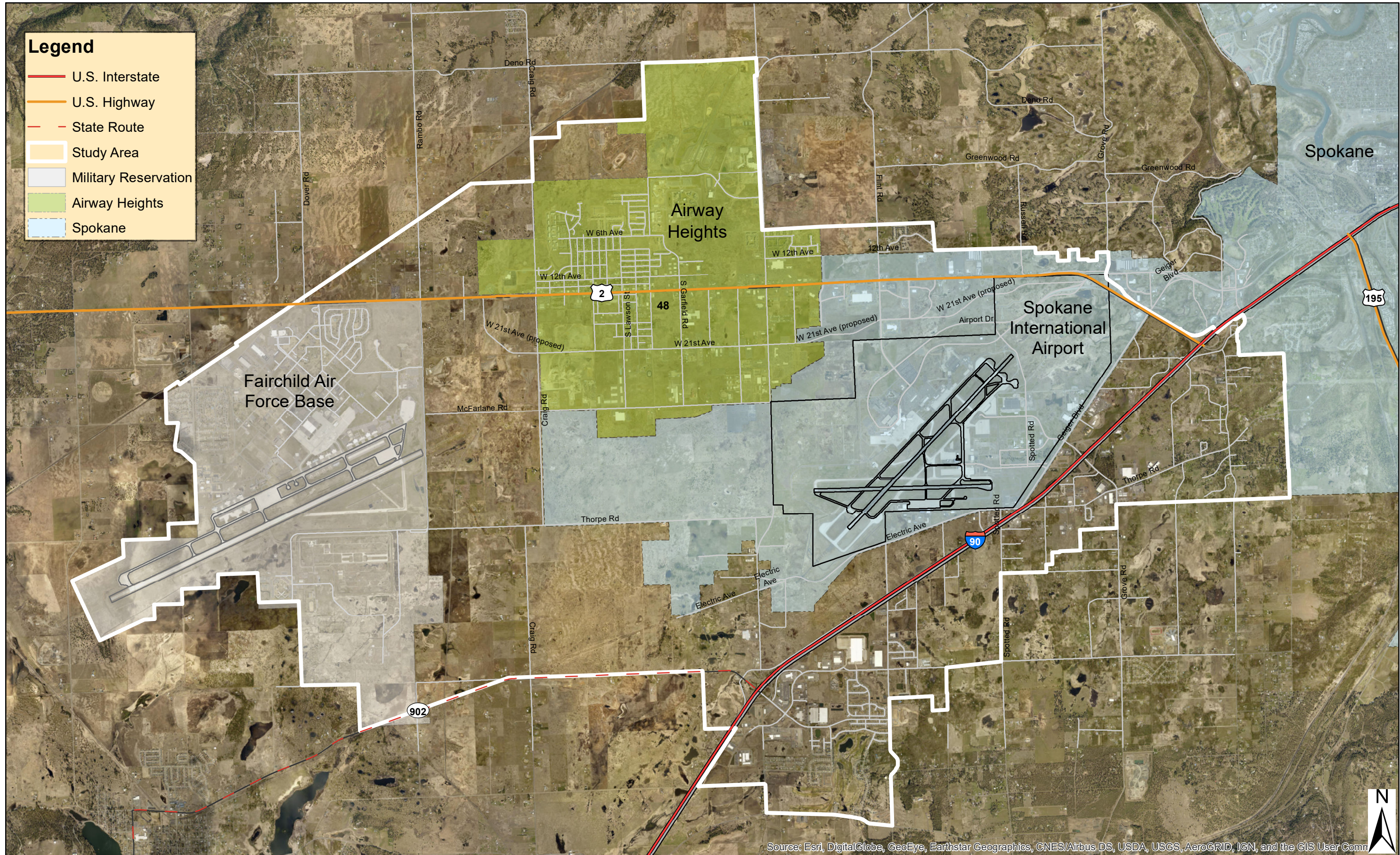


# US 2 West Plains Subarea Transportation Management Plan: Study Area



Source: ER Planning, WSDOT Workbench GIS data.  
City of Airway Heights, City of Spokane, Spokane County.  
Disclaimer: Data based on best available information.  
This data is for illustration purpose only.

A horizontal scale bar with tick marks at 0, 0.5, 1, and 2. The word "Miles" is written at the right end of the bar.

Date: 6/20/2019

