

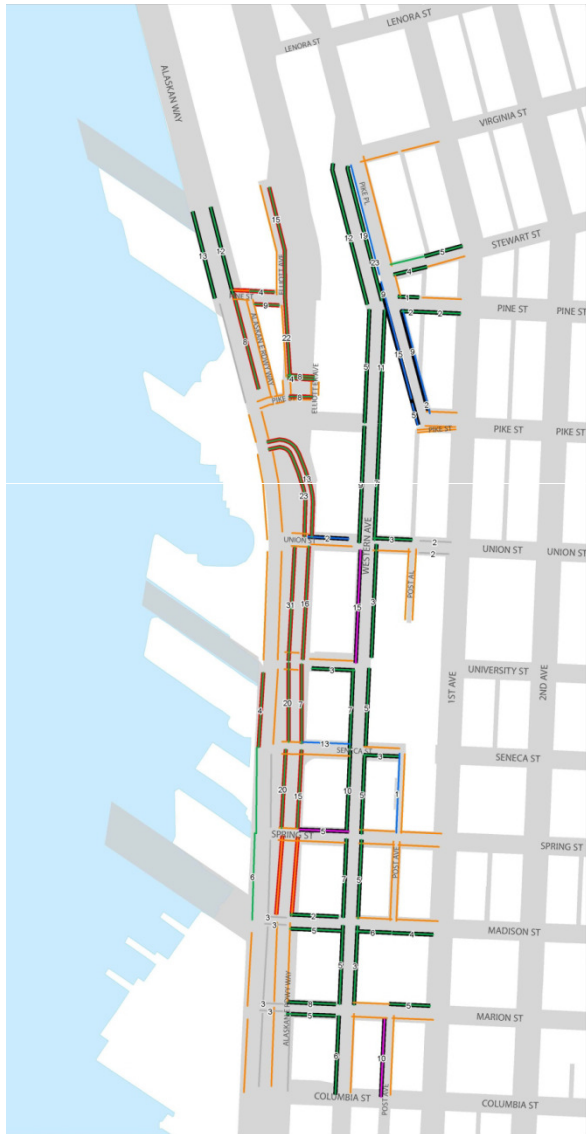
# Sunday On-Street Parking Survey

Results from Two Sundays:

April 15, 2012 – With M's Game (1:10 PM Start)

April 29, 2012 – No M's Game

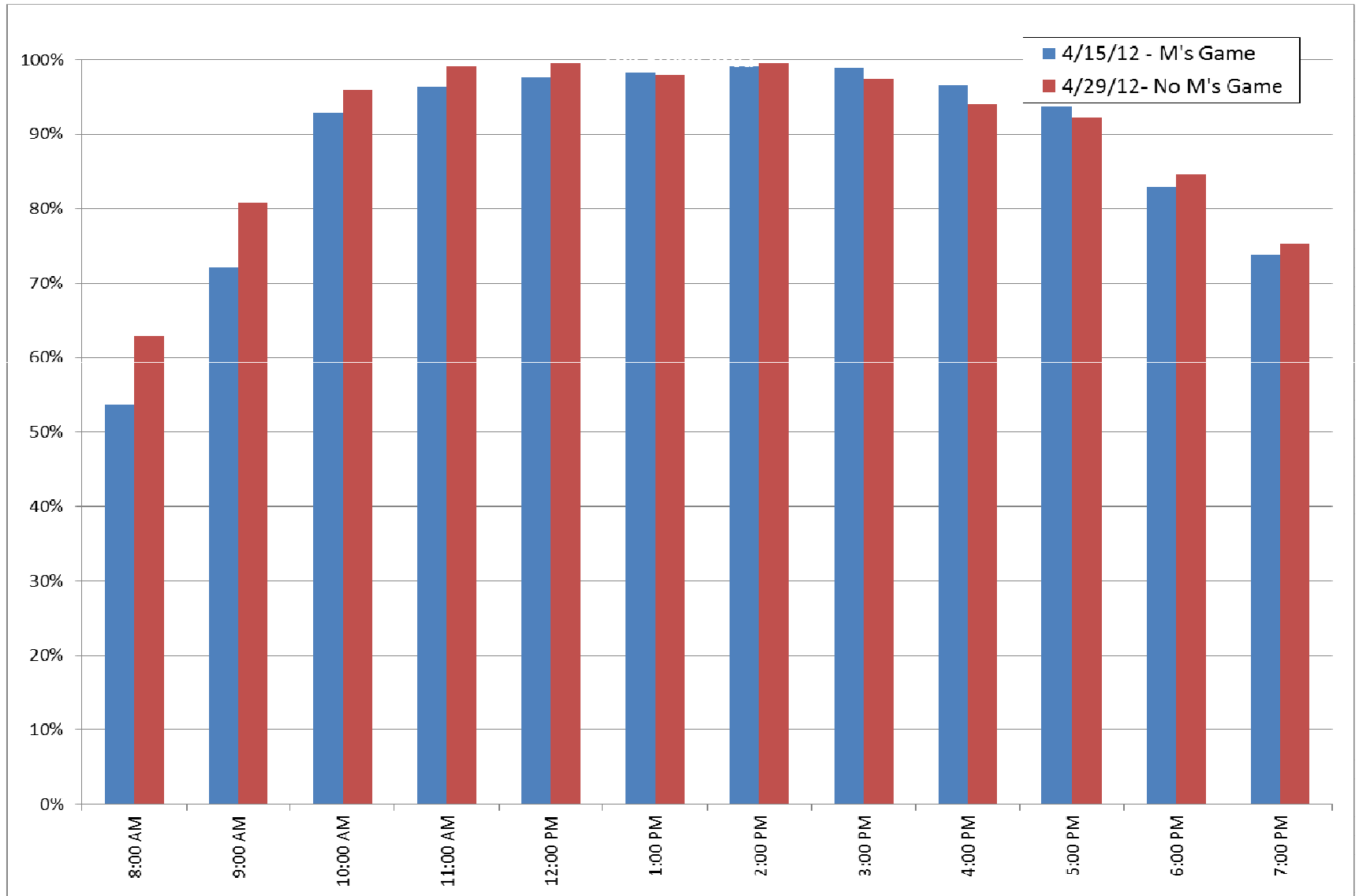
# Sunday Surveys



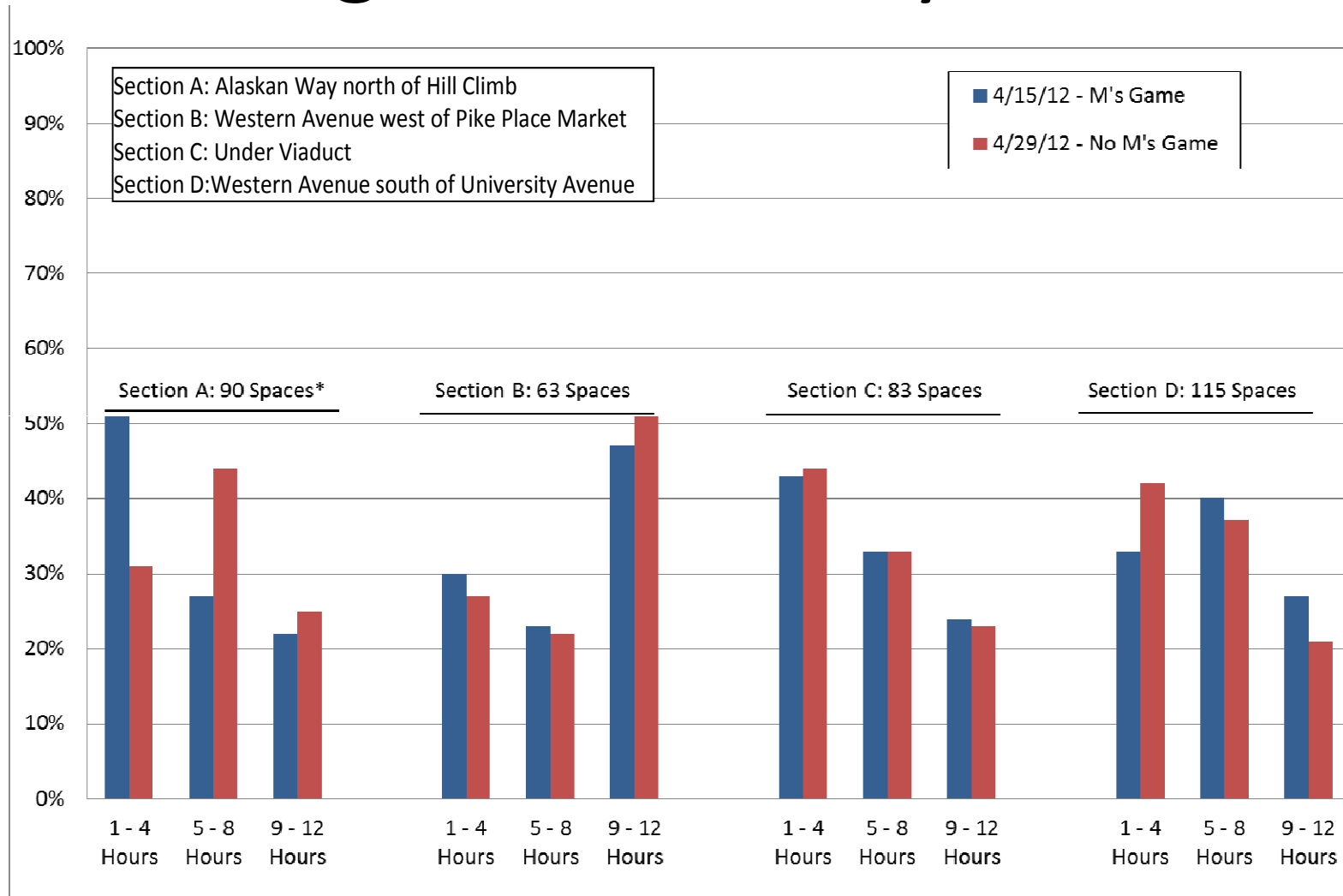
Used to assess parameters for potential restrictions:

- Restriction boundary
- Time-limits
- Time of enforcement

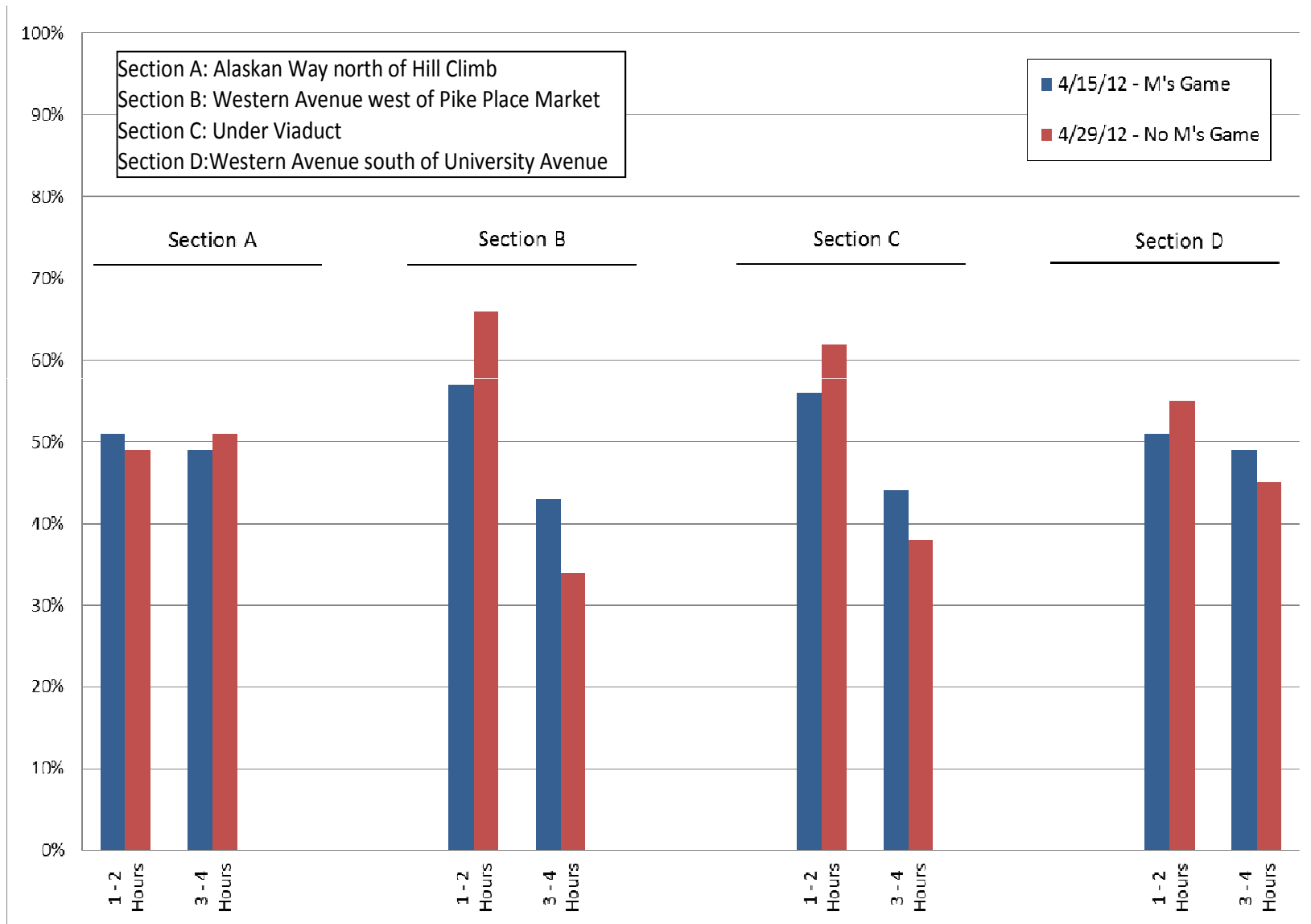
# Parking Utilization – Full Study Area



# Parking Duration – by Subarea



# Parking Duration – by Subarea



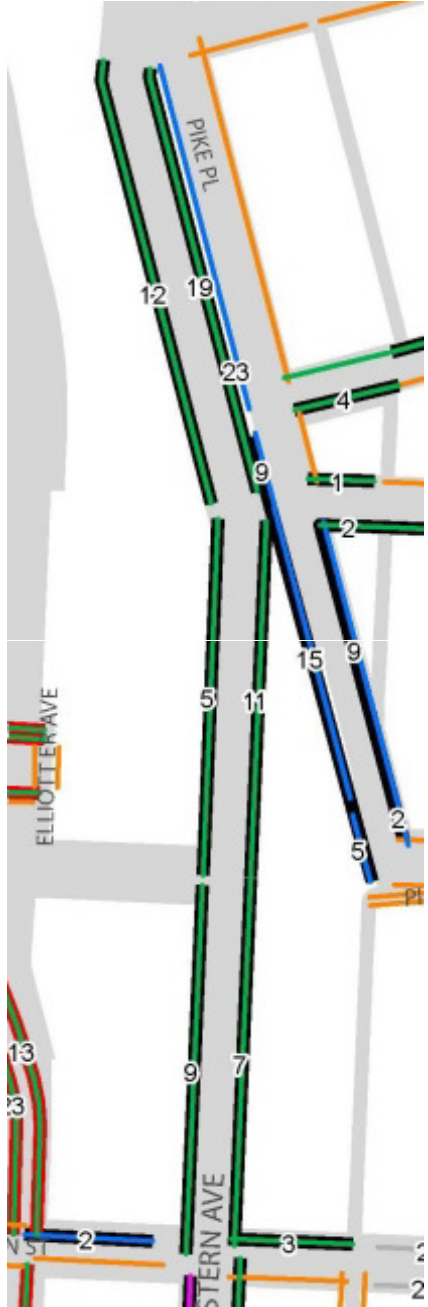
# Impact of Time Restrictions

Area	Total Parked	Impacted by 2-Hr Time Limit		Impacted by 4-Hr Time Limit	
		Number	Percentage	Number	Percentage
<b>April 15, 2012 – M's Game</b>					
Entire Study Area	1054	498	47%	290	28%
<u>Sub-Areas:</u>		--		--	
A: Alaskan Way	280	122	44%	55	20%
B: West of Pike Place	171	84	49%	56	33%
C: Under Viaduct	277	119	43%	67	24%
D: South of University St	326	173	53%	112	34%
<b>April 29, 2012 - No M's Game</b>					
Entire Study Area	1028	476	46%	301	29%
<u>Sub-Areas:</u>					
A: Alaskan Way	205	118	58%	78	38%
B: West of Pike Place	171	78	46%	58	34%
C: Under Viaduct	294	116	39%	68	23%
D: South of University St	358	164	46%	97	27%

# Subarea A

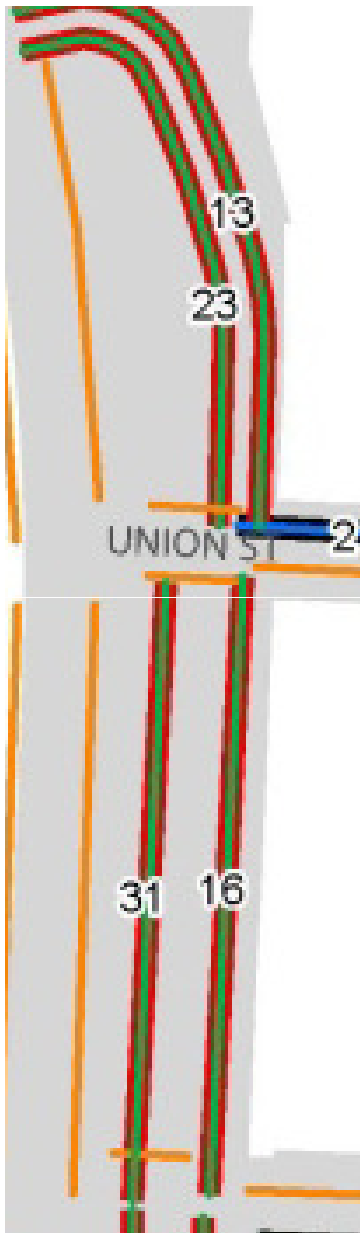


# Subarea B

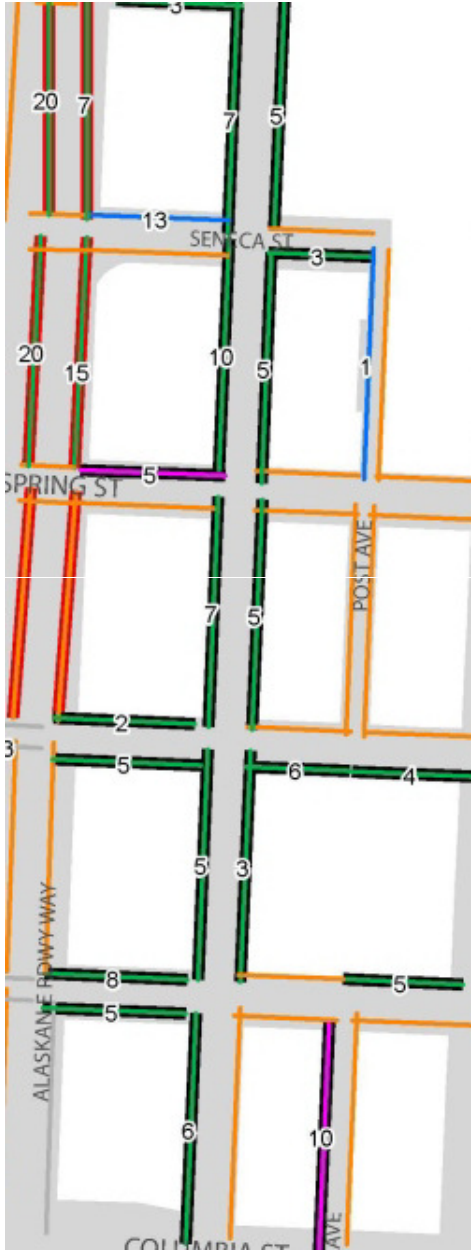




# Subarea C



# Subarea D



# Sunday Time Limit Costs

## Enforcement

- \$27,000 – 2012 overtime for 8/1 through 12/31

## Signs & Design

- 45 blockfaces
- 4 signs/blockface (average)
- \$1,500 per blockface
- \$68,000 total

## Outreach

- Postcard mailing - \$7,000
- Temporary notification signs
- Courtesy notices by SPD

# Schedule

