

VISION 2040

An Integrated Growth Management, Environmental, Economic, and Transportation Strategy

The Puget Sound Regional Council adopted VISION 2040 in April 2008. VISION 2040 is the result of a process undertaken by the region’s elected officials, public agencies, interest groups, and individuals to establish a common vision for the future. VISION 2040 consists of:

- An environmental framework
- A regional growth strategy
- Policies to guide growth and development
- Actions to implement
- Measures to track progress

“People, prosperity and planet” is the central theme of VISION 2040 and conveys that the people of our region, our economic prosperity, and our relationship to the planet are tied together in mutually supportive and inter-dependent ways. This means as a region we cannot achieve our social and environmental goals without economic prosperity and that the achievement of economic prosperity is strongly related to social well-being and environmental quality. VISION 2040 commits us to using our resources in thoughtful ways that do not compromise the ability of future generations to meet their needs.

A VISION For How and Where the Region Grows

VISION 2040 promotes an environmentally friendly growth pattern that will contain the expansion of urban growth areas, conserve farm and forest lands, support compact communities where people may both live and work, and will focus new employment and housing in vibrant urban centers. It includes a set

of multicounty planning policies (required by the Growth Management Act) that provide an integrated framework for addressing land use, economic development, transportation, public facilities, and environmental issues.

VISION 2040 provides clear and specific guidance for the distribution of population and employment growth into types of places defined as “regional geographies.” The largest share of growth is distributed to metropolitan and core cities — places with designated regional growth centers that are already connected by major transportation corridors and high capacity transit.

Within the metropolitan and core cities, VISION 2040 supports concentrating population and employment growth in regionally designated growth centers. These centers serve as hubs for regional transportation, public services and amenities. The table below shows the distribution of growth called for in VISION 2040.

Helps Local Government

All levels of government in the central Puget Sound’s four counties (King, Kitsap, Pierce, and Snohomish) will use VISION 2040 as a regional framework for making local decisions.

VISION 2040 help leaders accomplish common objectives that transcend jurisdictional borders. It also helps agencies, interest groups, and individuals work toward achieving regional goals.

By 2040 the central Puget Sound is forecast to contain 5 million people and over 3 million jobs.

The Washington State Growth Management Act (GMA) established 13 broad goals to guide the policy development of local comprehensive plans. VISION 2040 provides the multicounty policy framework required by GMA to meet these goals at the regional, county, and local government levels.

Population by Regional Geography

The Regional Growth Strategy in VISION 2040 anticipates the distribution of an additional 1,712,000 people to regional geographies in the central Puget Sound region. These different types of places will accommodate growth depending on their particular characteristics and the role they play in the region. This chart shows the amount of growth by number and percent envisioned for each regional geography. Population targets for individual cities and towns are set at the local level.

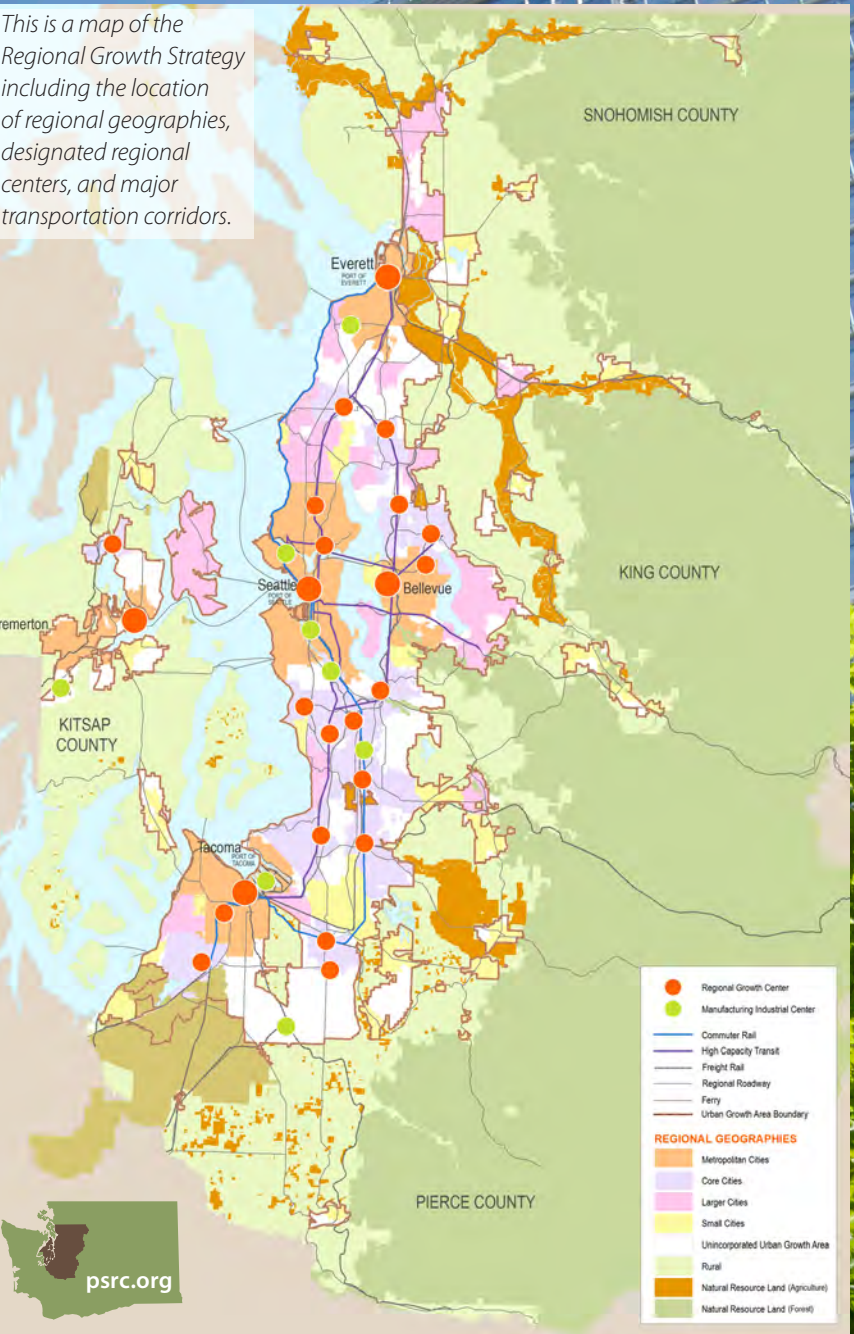
Population Growth 2000–2040

The Regional Growth Strategy focuses the majority of the region’s employment and housing growth into both metropolitan and core cities, which together contain more than two dozen designated regional growth centers. Centers in other larger cities also play an important and increased role over time as places that accommodate growth.

At a smaller scale, locally identified city and town centers provide services and housing that support vital and active communities at intensities appropriate to smaller municipalities. Growth in the unincorporated urban growth area is prioritized in areas that are affiliated for annexation into incorporated jurisdictions. Significantly less residential growth would occur in the region’s rural areas.

Growth: 2000–2040			
Regional Geography (number of places)		People	Percent
Metropolitan Cities (5): Bellevue, Bremerton, Everett, Seattle, Tacoma		550,000	32%
Core Cities & Silverdale (14): Auburn, Bothell, Burien, Federal Way, Kent, Kirkland, Lakewood, Lynnwood, Puyallup, Redmond, Renton, SeaTac, Silverdale, Tukwila		369,000	22%
Large Cities (18): Arlington, Bainbridge Island, Des Moines, Edmonds, Fife, Issaquah, Kenmore, Maple Valley, Marysville, Mercer Island, Mill Creek, Monroe, Mountlake Terrace, Mukilteo, Sammamish, Shoreline, University Place, Woodinville		240,000	14%
Small Cities (46): Algona, Beaux Arts, Black Diamond, Bonney Lake, Brier, Buckley, Carbonado, Carnation, Clyde Hill, Covington, Darrington, DuPont, Duvall, Eatonville, Edgewood, Enumclaw, Fircrest, Gig Harbor, Gold Bar, Granite Falls, Hunts Point, Index, Lake Forest Park, Lake Stevens, Medina, Milton, Newcastle, Normandy Park, North Bend, Orting, Pacific, Port Orchard, Poulsbo, Roy, Ruston, Skykomish, Snohomish, Snoqualmie, South Prairie, Stanwood, Sultan, Steilacoom, Sumner, Wilkeson, Woodway, Yarrow Point		136,000	8%
Unincorporated Urban Area (assumed to be annexed over time)		302,000	18%
Rural Area		115,000	7%
Total Increase		1,712,000	100%

Central Puget Sound Regional Growth Strategy



Summary

VISION 2040 provides clear regional agreement on a path to the future. It:

- Builds on established regional objectives and addresses emerging issues
- Reflects the views of central Puget Sound jurisdictions, public agencies, interest groups, and individuals
- Offers a regional context for decision-making at all levels of government

VISION 2040 contains policy guidance, concrete actions, and measurable objectives to assist the region’s cities, towns, businesses and organizations in taking steps towards making our vision for the future a reality.

VISION 2040 Environmental Framework, Growth Strategy, and Multicounty Policies

Rural and Resource lands

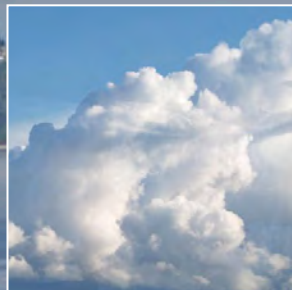


Permanently sustain the ecological function, resource value, and character of rural lands



Preserve the ecological function and value of resource lands

Environmental Stewardship



Care for our air, water, land, and climate

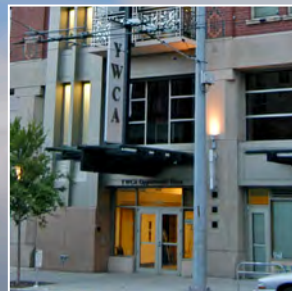


Care for fish and wildlife



Reduce waste and consumption

Urban Areas, Cities, and Urban Centers



Care for people



Encourage quality urban design



Provide clean and efficient transportation



Promote healthy living



Ensure economic prosperity



Build and sustain vibrant cities, centers, and compact communities



Create abundant open space and parks



Provide high quality services and amenities



Expand housing choices

Want to Know More? — visit psrc.org

The Puget Sound Regional Council works with local governments, businesses, and citizens to build a common vision for the region's future, expressed through three connected major activities: VISION 2040, the region's growth strategy; Transportation 2040, the region's comprehensive long-range transportation plan; and Prosperity Partnership, which develops and advances the region's economic strategy. VISION 2040 and all associated reports, documents, and maps are accessible on the PSRC website at psrc.org.

Puget Sound Regional Council

1011 Western Avenue, Suite 500 • Seattle, Washington 98104
206-464-7090 • psrc.org • July 2009

VISION 2040

people



prosperity



planet



VISION 2040 advances the ideals of the region's people, prosperity, and planet.

The central Puget Sound region's vision is to protect the environment, support and create vibrant, livable and healthy communities, offer economic opportunities for all, provide safe and efficient mobility, and make wise and efficient use of resources.

There is agreement that land use, economic, and transportation decisions will be integrated in a manner that supports a healthy environment, addresses global climate change, achieves social equity, and is attentive to the needs of future generations.

Puget Sound Regional Council • psrc.org