



### Please Note:

To ensure both current and historical interchange system information is available to all who utilize the Interchange Drawing Viewer, some of the Interchange Drawing PDF files will display with hand-sketched updates. New hand-sketched files will be added when updated information is received through construction and maintenance channels. New CAD drawings will be added as they are completed. There is currently a five-year backlog on updating the CAD drawings.

If you have questions about updates to the Interchange Drawing, the hand-sketched versions of the drawings, or the Interchange Viewer Web App please email [TransportationGISDataSteward@WSDOT.WA.GOV](mailto:TransportationGISDataSteward@WSDOT.WA.GOV) with Interchange Drawing Feedback or Inquiry in the subject line.

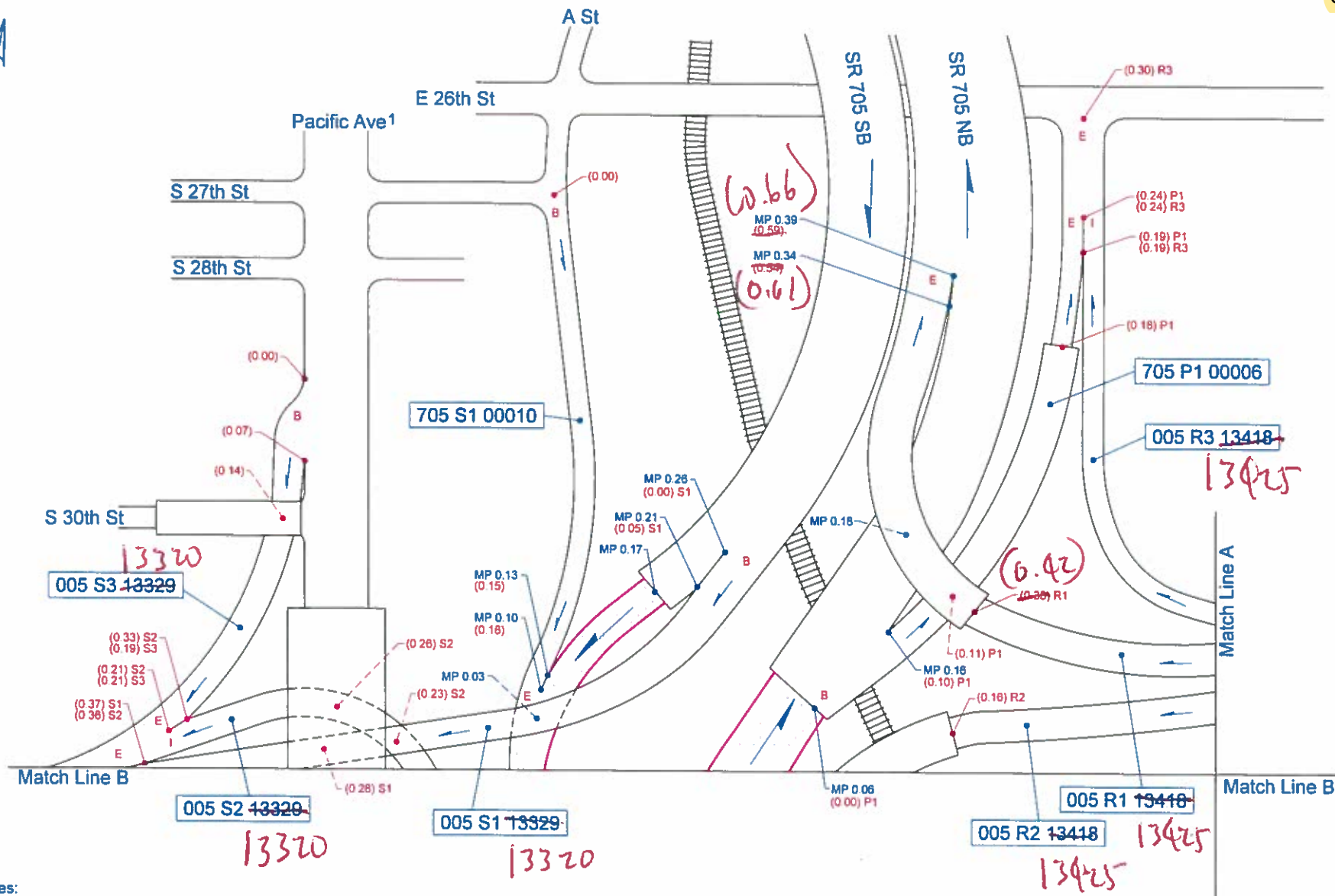
**Continue to the following pages to see the current and historical interchange configurations.**

### *Did you know...?*

- You can download the PDF file to your computer.
- Once downloaded, you can access the layers that compose each drawing through Adobe Acrobat Reader or Pro. NOTE: Layers are not available on hand-sketches.
- [How to download and view Interchange Drawing layers in Adobe Acrobat \(PDF 115KB\)](#)

Effective Date:  
08/28/22

B-2B-22  
Med inn



Historical Alignment Notes:  
1. SR 509 realigned effective 02/01/98

Not To Scale

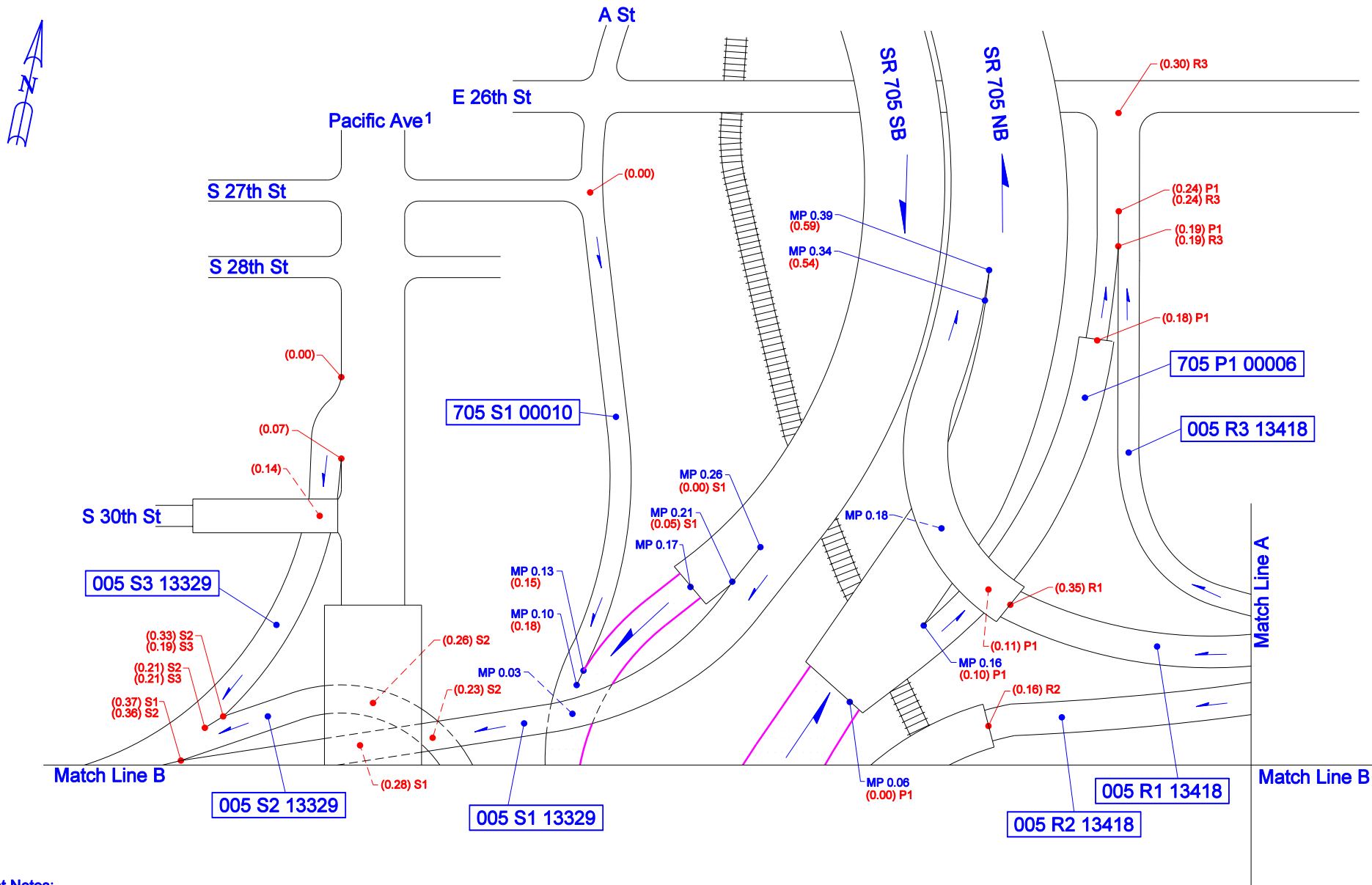
08/27/2008 KWP

WSDOT OLYMPIC REGION

Tacoma, Pierce County

Junction SR 705/SR 7

SR 5 - Exit 133



Historical Alignment Notes:  
 1. SR 509 realigned effective 02/01/98

Not To Scale