



SR 520 Montlake Project Subcontracting Opportunities Virtual Event

Via Zoom

Sept. 28, 2020

Regina Glenn
Diversity and Inclusion Program Manager,
WSDOT Megaprograms

Omar Jepperson, PE, DBIA
Program Administrator,
SR 520 & AWW Program

Greg Ritke
VP of US Operations, Graham

John Welch
Projector Director, Graham

Tom McMillan
Procurement Manager, Graham

Suzanne Arkle
Inclusion Manager, Graham

Jonathan Weaver
Project Manager, American Bridge

Luis Martinez
Project Manager, Elcon

Welcome and meeting agenda

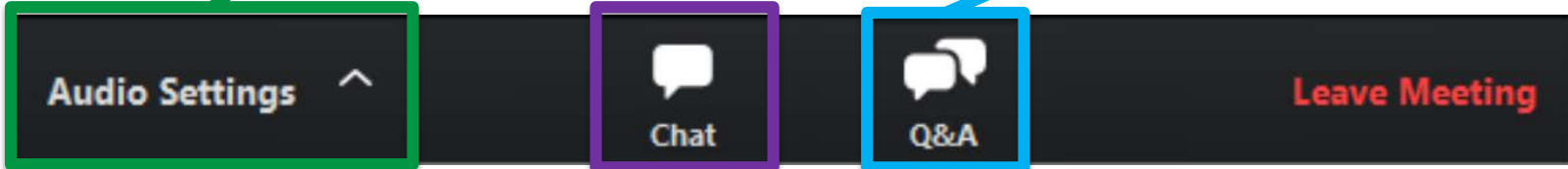
| Time | Topic | Speaker |
|-----------|--|--|
| 1:00 p.m. | Welcome, agenda, meeting format | Regina Glenn, WSDOT (facilitator) |
| 1:10 p.m. | SR 520 Program overview & Diversity and Inclusion Program | Omar Jepperson, WSDOT |
| 1:20 p.m. | Kick off panel with Graham, American Bridge, Elcon | Suzanne Arkle, Graham (panel moderator) |
| | Montlake Project overview and construction progress | Greg Ritke, Graham John Welch, Graham |
| | Contracting information and opportunities with Graham | Tom McMillan, Graham |
| | Contracting opportunities with American Bridge | Jonathan Weaver, American Bridge |
| | Contracting opportunities with Elcon | Luis Martinez, Elcon |
| 1:40 p.m. | Questions and answers (Q&A) | All (facilitated by Regina Glenn) |
| 1:55 p.m. | Next steps and how to stay in touch | Regina Glenn |
| 2:00 p.m. | Adjourn | All |

Meeting format overview



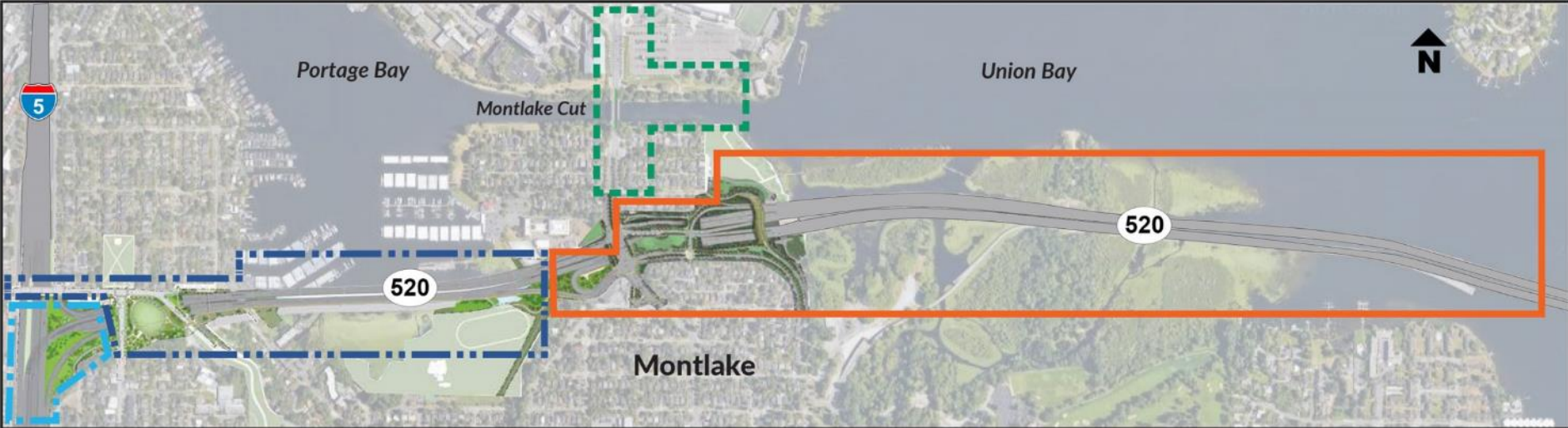
All attendees are muted.
To adjust your audio settings during the meeting, click here.

Submit questions using this Q&A box, to be addressed during the Q&A time.



The Chat function is available.
Please feel free to provide general comments or thoughts.
Note: All attendees can see your chats.

SR 520 Program overview – the “Rest of the West”

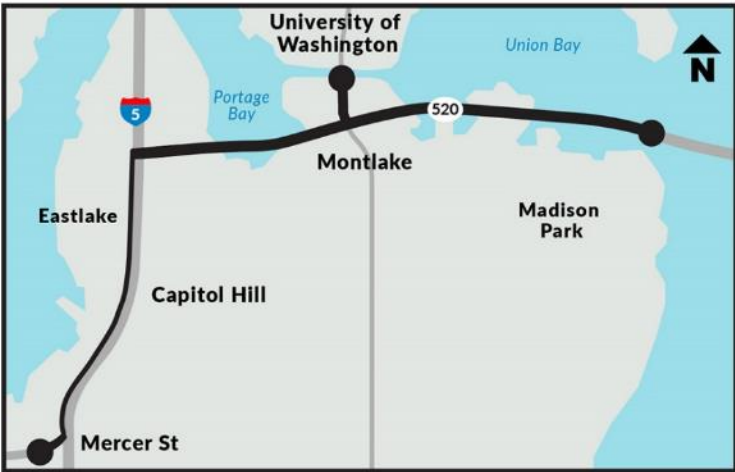


SR 520/I-5 Express Lanes Connection Project
 Construction estimated start: 2021
 Estimated duration: 3 years

Portage Bay Bridge and Roanoke Lid Project
 Construction estimated start: 2023
 Estimated duration: 6 years

Montlake Cut Bascule Bridge Project
 WSDOT will coordinate with community stakeholders and agency partners regarding project scope and timing

Montlake Project
 Construction start: 2019
 Estimated duration: 4-5 years



Vicinity map

SR 520 Diversity and Inclusion Program



The SR 520 Program has hired 129 MSVWBE and DBE firms on project design and construction, and paid more than \$219 million to these firms for their work, to date.



Suzanne Arkle, Montlake Project Inclusion Manager (left) and Regina Glenn (right) attend a community event to reach MSVWBE and DBE firms who may be interested in working on the project.

Visit our SR 520 Diversity Program website:

www.wsdot.wa.gov/Projects/SR520Bridge/About/DBE.htm

Commitment to inclusive contracting on the Montlake Project

- Inclusion is one of WSDOT's three agency goals, and represents a top priority.
- Montlake Project contract amount: **\$455.3 million**.
- Voluntary inclusion goal for Minority, Small, Veteran and Women Owned Business Enterprise (MSVWBE) participation: **26%**
 - Minority: 10%
 - Small: 5%
 - Veteran: 5%
 - Women: 6%



The SR 520 team speaks with attendees at a WSDOT-hosted contracting open house.

Montlake Project construction team panel



SR 520 Montlake Project overview

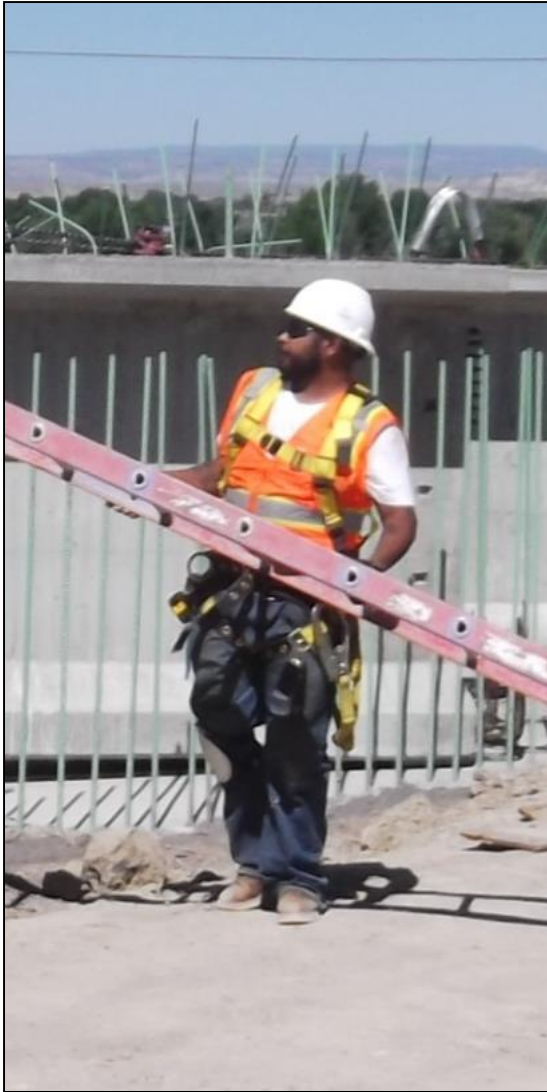


Construction began August 2019.
(anticipated completion in approx. 2023)

SR 520 Montlake Project construction status



Graham project contracting information



Commercial Requirements

- Bonding for all Contracts
- Prompt Pay
- Insurance/CCIP
- Community Workforce Agreement
- MSVWBE Participation
- Apprenticeship Utilization
- Certified Payroll
- LCPtracker / B2G Now

Best Value Evaluation Process

- Competitive Pricing
- Capacity
- Experience
- Safety Record
- MSVWBE Utilization
- Bonding Capacity
- Insurability

Contracting opportunities with Graham

| SCOPE | PROJECTED DATE | ESTIMATED VALUE |
|--|----------------------------|-----------------|
| Landscaping | June 2021 | \$ 4,000,000 |
| Guardrail | Out for Bid | \$ 14,000 |
| Barrier | Out for Bid | \$ 1,400,000 |
| Roadside and Overhead Signs | Out for Bid | \$ 120,000 |
| Misc. Metals (Railings) - Supply and place | August 2020 thru June 2021 | \$ 900,000 |
| Valve Control Building | November 2020 | \$ 1,785,000 |
| Waterproofing | November 2020 | \$ 1,500,000 |
| Sign Structures | November 2020 | \$ 900,000 |
| Concrete Flatwork | February 2021 | \$ 1,230,000 |
| Misc. Metals (Canopies) Supply and Place | June 2021 | \$ 700,000 |

Contracting opportunities with American Bridge

| SCOPE | PROJECTED DATE | ESTIMATED VALUE |
|--|----------------|-----------------|
| Concrete Pumping | February 2021 | \$ 192,732 |
| Formwork/Lumber Supply | July 2021 | \$ 1,151,250 |
| Bridge Drainage – Furnish and/or Install | December 2021 | \$ 1,421,331 |
| NE Ramp Demolition (Over Land) | January 2023 | TBD |

Contracting opportunities with Elcon

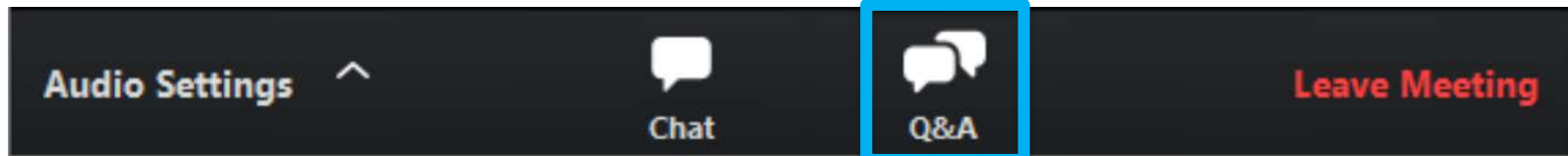
| SCOPE | PROJECTED DATE | ESTIMATED VALUE |
|--|----------------|-----------------|
| Equipment Pads <small>(Subcontract)</small> | January 2021 | \$ 50,000 |
| Electrical Equipment -Testing | January 2021 | \$ 30,000 |
| Junction Boxes <small>(material only)</small> | April 2021 | \$ 350,000 |
| Copper Feeder Wire <small>(material only)</small> | June 2021 | \$ 800,000 |
| Concrete J-boxes <small>(material only)</small> | June 2021 | \$ 150,000 |
| GRC Conduit <small>(material only)</small> | June 2021 | \$ 1,600,000 |
| Innerduct <small>(material only)</small> | August 2021 | \$ 600,000 |

Questions and Answers (Q&A)



- Reminder: please type your question into the “Q&A” box.
- We’ll read questions out to everyone, then answer them verbally.
- We’ll get to as many questions as we can before we adjourn.
- If you have additional questions after the meeting, you can send them to our contacts, which are listed on the next slide.

Submit your questions using this Q&A box.



Next steps and how to stay in touch

Next steps for interested firms:

- To schedule a 1:1 Meeting, contact **Darling Nava**, Inclusion Resource Specialist; darling@zanninc.com, 813-947-8586.

WSDOT web resources:

- **SR 520 Diversity Program website:**
- <https://wsdot.wa.gov/Projects/SR520Bridge/About/DBE.htm>
- Includes resources and our quarterly reports.
- **Regina Glenn**, WSDOT Megaprograms Diversity and Inclusion Manager; GlennRe@consultant.wsdot.wa.gov or 206-770-3520.

Additional resource:

- Washington State Procurement Technical Assistance Center (PTAC):
- <https://washingtonptac.org/>

Montlake Project contacts:

Graham:

Tom McMillan
tom.mcmillan@grahamus.com
425-410-0993

American Bridge:

Jonathan Weaver
Jweaver@americanbridge.net
757-561-6126

Elcon:

Luis Martinez
lmartinez@elconcorp.com
206-571-3751

Adjourn

- Thank you for participating in today's meeting! Have a great day.



Visualization of the new Montlake lid at completion.