

4. What Happens If We Don't Do Anything?

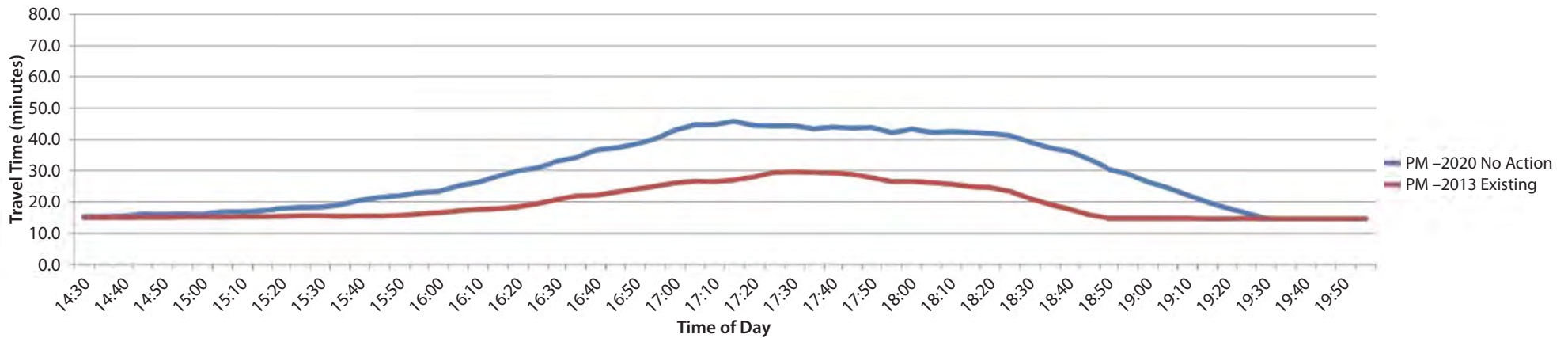
- Travel Times –
2013 and 2020
- Travel Speeds –
2013 and 2020



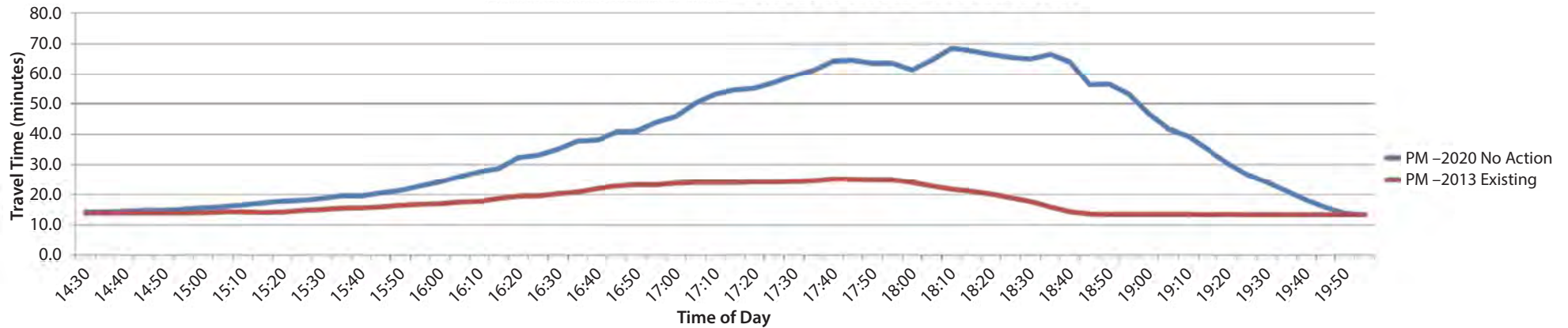
Travel Times

2013 Existing versus 2020 No Action (P1) I-5 Travel Time – SR 510 to SR 512 – PM Peak Period

I-5 Southbound Travel Time – SR 512 to SR 510 – PM Peak Period



I-5 Northbound Travel Time – SR 510 to SR 512 – PM Peak Period



Travel Speeds

