

# Searching for Washington State Data though ArcGIS Online

Many local governments are in the process of scoping the periodic updates of their Growth Management Act comprehensive plans. Washington State Department of Transportation (WSDOT) has made it easier to access the transportation data needed for these updates. The WSDOT Community Planning Portal is an ArcGIS Online application used by state, regional, and local transportation planners to share transportation and land use data. The intent of the portal is to foster collaborative planning and to achieve common goals, including the provision of a reliable, responsible, and sustainable transportation system for the citizens of Washington.

The Community Planning Portal contains a wide array of transportation data and gives users the ability to customize their maps. However, this is not the only data that's available. If you are looking for additional data sets from other sources, you can search for them and add the data to your Community Planning Portal map.

## How to Search for Data and Add Data

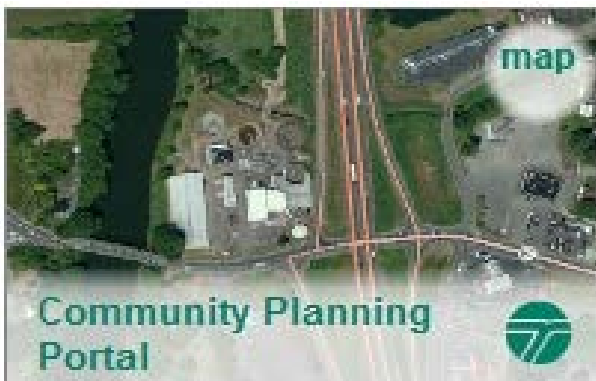
To gain full access to all available ArcGIS Online data, you first

need to click the "Modify Map" button located in the upper right hand corner of the screen. To search for data to add to your map, click the "Add" button located

in the tool bar at the top left corner of the screen. Select "Search for Layers" from the drop down menu. Make sure to set the "In" box to "ArcGIS Online" and type in the specific term(s) you are looking for in the "Find" box, and then click "Go". The results of your search will appear within the screen. Select the layer that you would like to include within the map by selecting the "Add" button. Once you have added the layers that you want, click on the "Done Adding Layers" button at the bottom of the

screen. To make it easier for users to locate and consume specific data, many organizations will associate their data with certain "tags" or buzzwords. For instance, the Washington State Department of Transportation uses tags such as: "WSDOT" or "transportation" with many of our layers. We will also use terms specific to that data set such as planning, park and rides, state routes, etc.

ArcGIS Online gives the user another opportunity to view and add any of an organization's available featured content through the organization's gallery. From an organizational page such as those listed below, click on the blue "Gallery" tab in the upper left hand corner of the page to view all of its featured content. Once open, you



## How to Access the WSDOT Community Planning Portal

Access the Community Planning Portal by either visiting its [home page](#) or, through the WSDOT Online Map Center at <http://wsdot.maps.arcgis.com> and clicking on the Community Planning Portal icon.

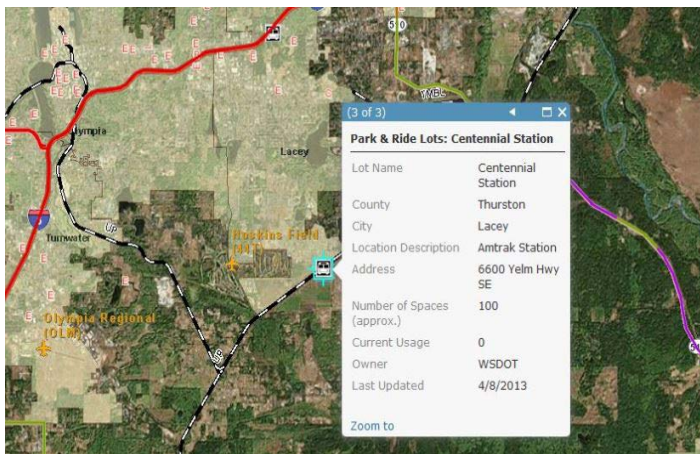
## How to Search for Data

1. Once the map is opened, click on the "Modify Map" button.
2. Select the "Add" button.
3. Select "Search for Layers".
4. In the "Find" box, enter the subject you are searching for.
5. In the "In" box, select ArcGIS Online and press "Go".
6. To add a layer to your map select "Add" button next to the layer's title.
7. Click "Done Adding Layers" button to close the dialog box.

will notice that the organization's content is organized by file type. To open the layer, hover over its icon. You will then notice a pop-up box open and provide you with options to "open" the layer into the map or to view more "details" of the layer.

## Other Washington State Data Available in ArcGIS Online:

- **Washington State Geospatial Open Data Portal:** This Washington State Geospatial Open Data Portal provides access to a wide array of the maps, applications, web services, data, and PDF maps produced by the State's governmental agencies, cities, counties, schools, and tribes. The data found within this portal includes societal, economic, educational, political, historical, and geological information, and much more.
- **Washington State Department of Transportation:** The WSDOT Online Map Center is the home of the Community Planning Portal and serves as the gateway to a wide array of WSDOT data pertaining to topics such as: aviation, freight, ferries, and transit.
- **Washington State Department of Ecology:** The Washington State Department of Ecology's data portal provides maps and applications that support the agency's mission of protecting the land, air, and waters of the state. The data found within this portal includes hydrologic, political, and environmental data.
- **Washington State Department of Natural Resources:** The Washington State Department of Natural Resources' ArcGIS Online galleries provides access to web maps and applications. The Washington State Department of Natural Resources also has interactive maps available on its **Geologic Information Portal**. This portal contains information on topics such as: landslides of Washington state, a tsunami evacuation map, and sites of Washington state coal mines sites.
- **Washington State Department of Fish and Wildlife:** The Washington State Department of Fish and Wildlife data portal provides access to maps, applications, and web services. The data found within this portal's gallery focuses on subjects such as locations of fish passage and fisheries, large animal and bird migrations, and locations of energy projects.



For more information about the portal, please contact Kyle Miller, Transportation Planner, Planning Policy & Implementation Office, 360.705.7946, [milleky@wsdot.wa.gov](mailto:milleky@wsdot.wa.gov).

**Title VI Notice to Public:** It is the Washington State Department of Transportation's (WSDOT) policy to assure that no person shall, on the grounds of race, color, national origin or sex, as provided by Title VI of the Civil Rights Act of 1964, be excluded from participation in, be denied the benefits of, or be otherwise discriminated against under any of its federally funded programs and activities. Any person who believes his/her Title VI protection has been violated, may file a complaint with WSDOT's Office of Equal Opportunity (OEO). For additional information regarding Title VI complaint procedures and/or information regarding our non-discrimination obligations, please contact OEO's Title VI Coordinator Jonte' Robinson at (360) 705-7082. Americans with Disabilities Act (ADA) Information: This material can be made available in an alternate format by emailing the WSDOT Diversity/ADA Affairs team at [wsdotada@wsdot.wa.gov](mailto:wsdotada@wsdot.wa.gov) or by calling toll free, 855-362-4ADA(4232). Persons who are deaf or hard of hearing may make a request by calling the Washington State Relay at 711.

**Americans with Disabilities Act (ADA) Information:** This material can be made available in an alternate format by emailing the WSDOT Diversity/ADA Affairs team at [wsdotada@wsdot.wa.gov](mailto:wsdotada@wsdot.wa.gov) or by calling toll free, 855-362-4ADA(4232). Persons who are deaf or hard of hearing may make a request by calling the Washington State Relay at 711.