

The draft *Southworth Ferry Terminal Sign Program Implementation* plans contained in this appendix were developed in February 1998.

SOUTHWORTH FERRY TERMINAL
SIGN PROGRAM IMPLEMENTATION



DEPARTMENT OF TRANSPORTATION

To be used in conjunction with
Washington State Ferries
Systemwide Signage
Volume 2
Terminal Signage Standards Manual
February 6, 1998

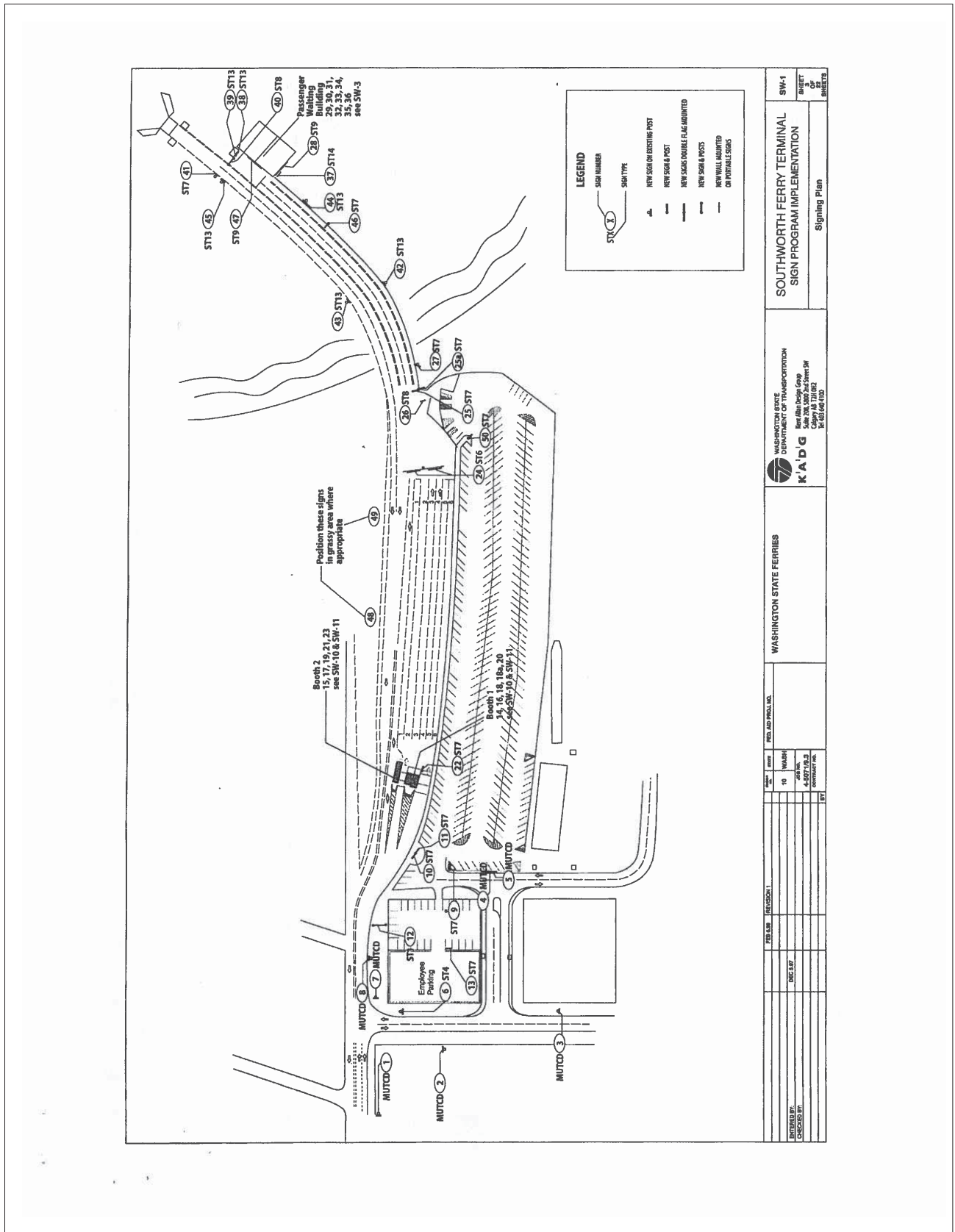
K A D G

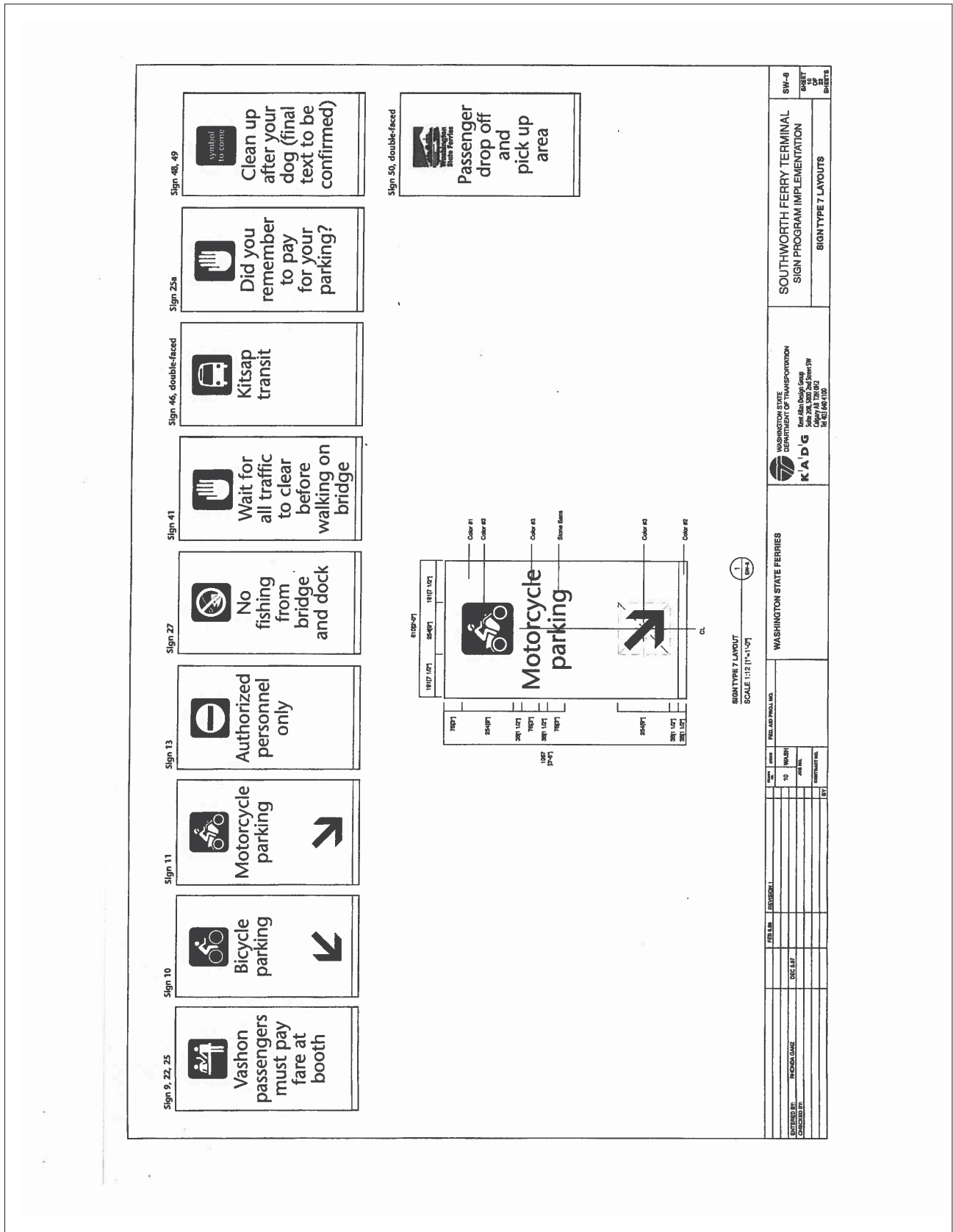
Kent Allan Design Group
Suite 208, 5800 2nd Street SW
Calgary AB T2H 0H2
Tel 403 640 4100

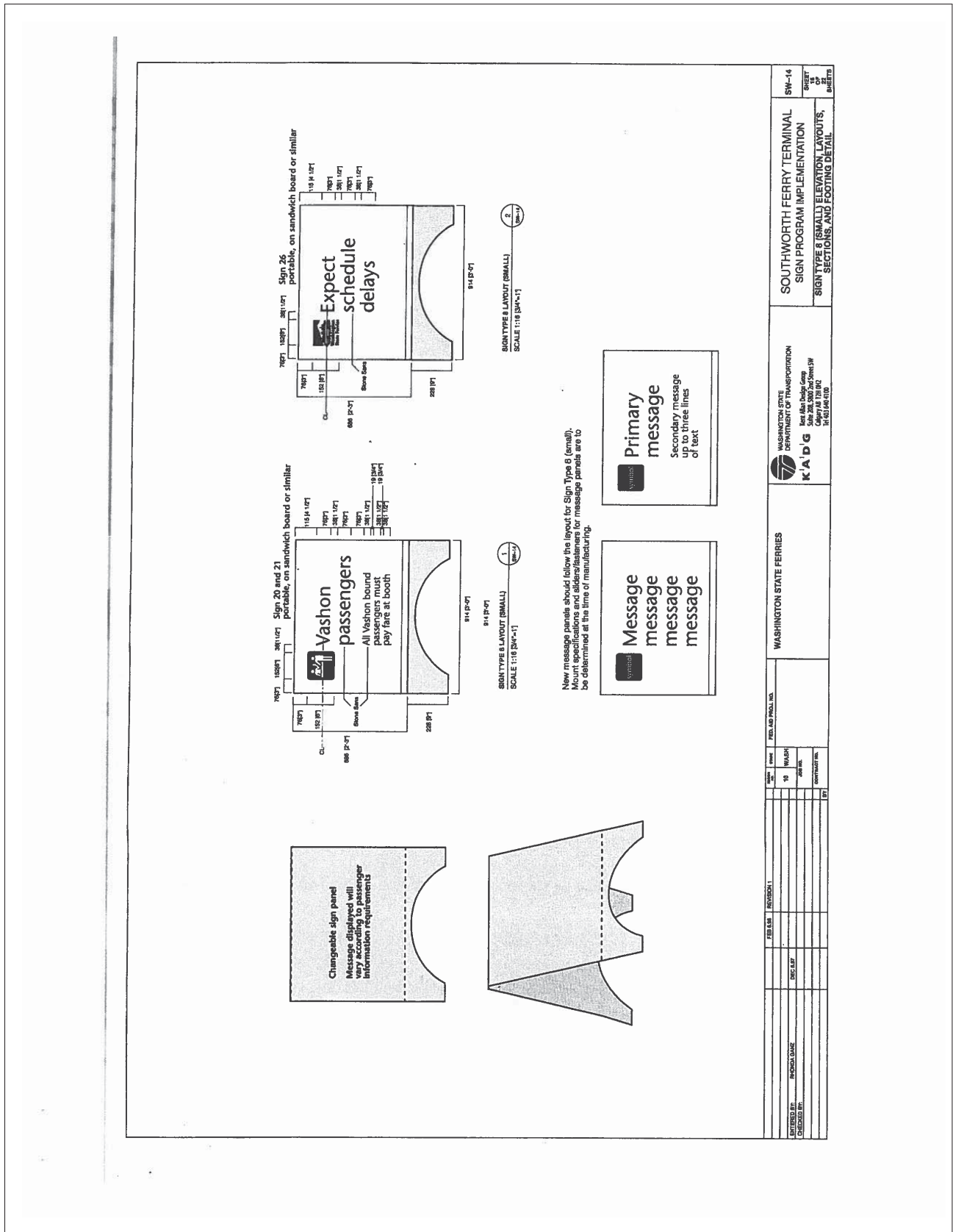
DRAFT

Sign #	Sign Type	Message	Notes	Layout Specs	Notes	Sign #	Sign Type	Message	Layout Specs	Notes
26	ST 8	(Washington State Rules symbol) Caption: Wash State Rules	One of a variety of changeable message boards mounted on a portable stainless steel or similar mount. To be determined after message panels to be added to terminal as required	SW-14 SW-14-2		43	ST 13	(Life buoy ring with rope symbol) LIFE BUOY RING	SW-13 SW-13-7	
27	ST 7	(no fishing symbol) No fishing from bridge and dock	Mount on existing pole	SW-8 SW-8-1		44	ST 13	(Life buoy ring with rope symbol) LIFE BUOY RING	SW-13 SW-13-7	
28	ST 9	(restrooms and accessibility symbol) Passenger Terminal		SW-18 SW-18-1		45	ST 13	(Life buoy ring with rope symbol) LIFE BUOY RING	SW-13 SW-13-7	
29	ST 14	(accessibility symbol) Call 1-800-4-ACCESS for assistance if you require assistance	Check phone number with WSP, mount below Sign 30	SW-12 SW-12-1		46	ST 7	(Bus symbol) ORCA Transit	SW-6 SW-6-1	This sign is double-faced. Mount details see SW-7-1. Apply vinyl graphics to both sides of sign.
30	ST 14	(labeled purchase symbol) Transferring at Vashon? For assistance on the Vashon to Seattle passenger ferry, please call 1-800-4-ACCESS or visit us online at www.wsp.com. Failure to present a transfer may result in a ticket if service is not available.	Mount above Sign 29	SW-12 SW-12-2		47	ST 9	(restrooms and accessibility symbol) Passenger Terminal	SW-18 SW-18-1	
31	ST 13	(Do not enter symbol) AUTHORIZED PERSONNEL	Restroom doors to eliminate large word "WOMEN"	SW-13 SW-13-4		48	ST 7	(Clean up after your dog symbol) wordmark to come from WSP	SW-6 SW-6-1	Locate in appropriate grassy area at border of building area. Mount details see SW-7-1.
32	ST 11	(Women's restrooms, baby change, accessibility symbol) WOMEN, baby	Repeat doors to eliminate large word "WOMEN"	SW-13 SW-13-3		49	ST 7	(Clean up after your dog symbol) wordmark to come from WSP	SW-6 SW-6-1	Locate in appropriate grassy area at border of building area. Mount details see SW-7-1.
33	ST 11	(Men's restrooms, baby change, accessibility symbol) MEN, baby	Repeat doors to eliminate large word "MEN"	SW-13 SW-13-2		50	ST 7	(Washington State Ferries logo) Passenger drop off and pick up area	SW-9 SW-9-1	This sign is double-faced. Apply vinyl graphics to both sides of sign. Mount details see SW-7-1.
34	ST 13	(No smoking symbol) NO SMOKING	Position above Sign 36	SW-13 SW-13-2		Each full booth requires two post-holders on each side of the booth, to display 11 x 17 notices. Total of eight post-holders on this area. See SW-10 and SW-11 for positioning guidelines.				
35	ST 13	(No smoking symbol) NO SMOKING		SW-13 SW-13-2						
36	ST 15	(Information library and display case) No smoking (no smoking symbol) No eating or drinking (no eating symbol) No drinking (no drinking symbol)	Information display is on one wall of terminal, display case is on the other	SW-20 SW-20						
37	ST 14	(Information library and display case) No smoking (no smoking symbol) No eating or drinking (no eating symbol) No drinking (no drinking symbol)		SW-13 SW-13-3						
38	ST 13	(Flammable symbol) FLAMMABLE MATERIALS	Mount on door of yellow shed where gas carts are stored	SW-13 SW-13-4						
39	ST 13	(Gas can symbol) DISCARDED AFTER 24 HOURS	Mount below Sign 38	SW-13 SW-13-1						
40	ST 9	(Passenger terminal symbol) Passenger Terminal Passenger drop off and pick up area	Final layout and mount without traffic sign to be selected from SW-16	SW-15 SW-15-1						
41	ST 7	(Wait symbol) Wait for all traffic to clear before walking on bridge	To be determined if mounted on existing post or on new one	SW-6 SW-6-1						
42	ST 13	(Life buoy ring with rope symbol) LIFE BUOY RING		SW-13 SW-13-7						

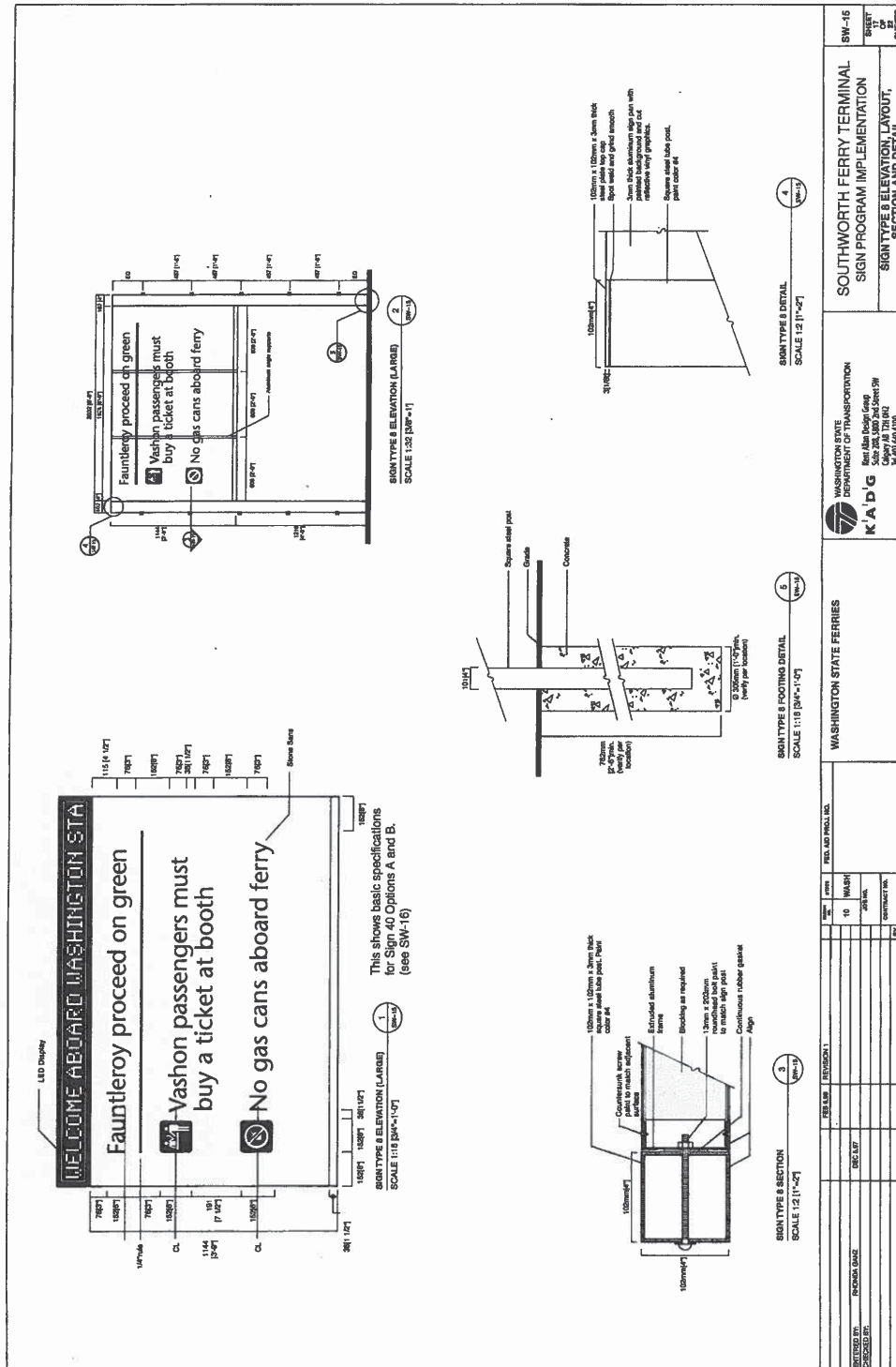
 WASHINGTON STATE DEPARTMENT OF TRANSPORTATION King Area Design Group 2000 1st Ave, Suite 200 Everett, WA 98201 425.941.4100		SOUTH WORTH FERRY TERMINAL SIGN PROGRAM IMPLEMENTATION		SW-11 SHEET 1 OF 10
WASHINGTON STATE FERRIES		SIGN SCHEDULE		
PREPARED BY: ENGINEER:	CHECKED BY: DATE:	FILE NO.: 10	REV. NO.: 001	COMMENTS:



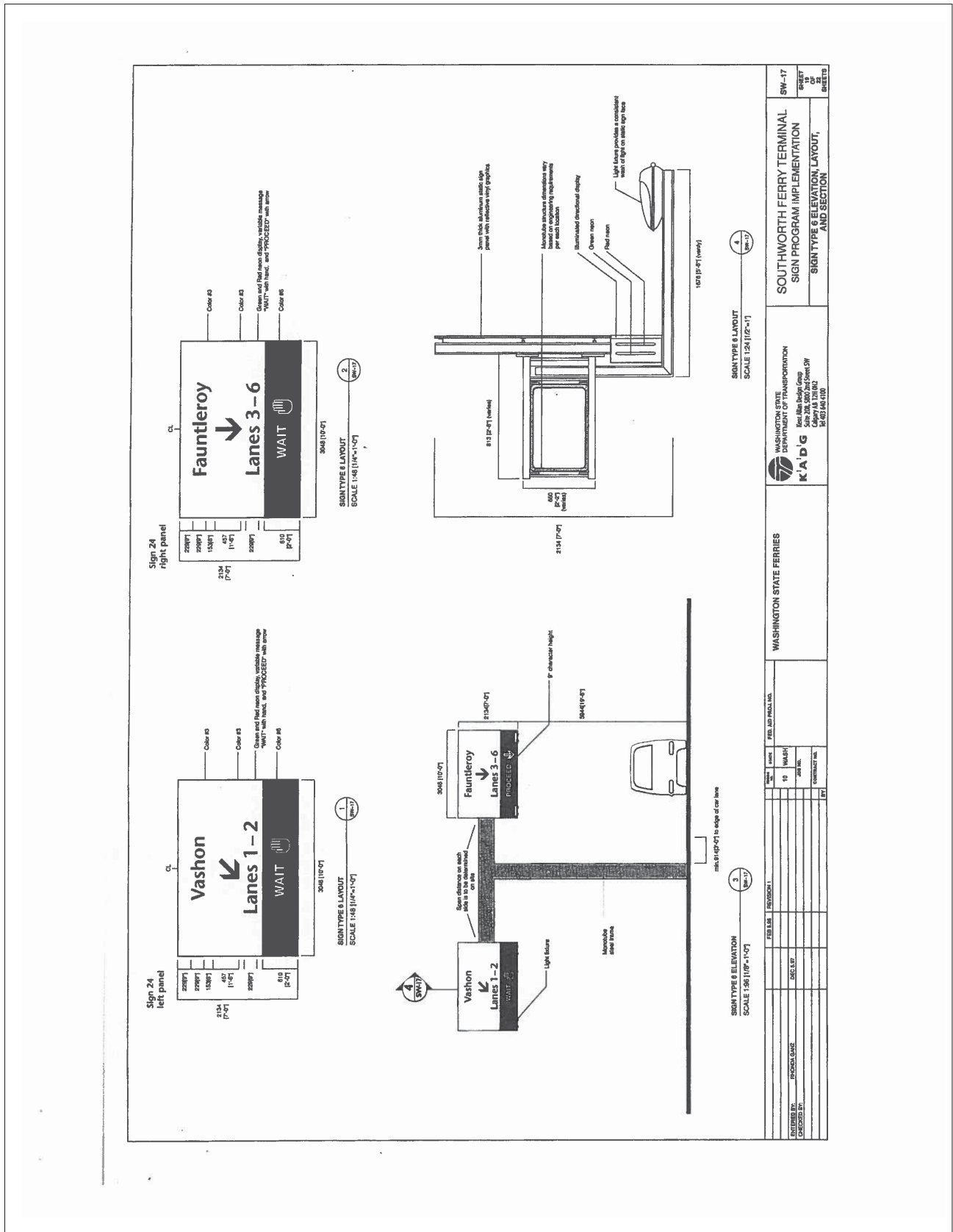


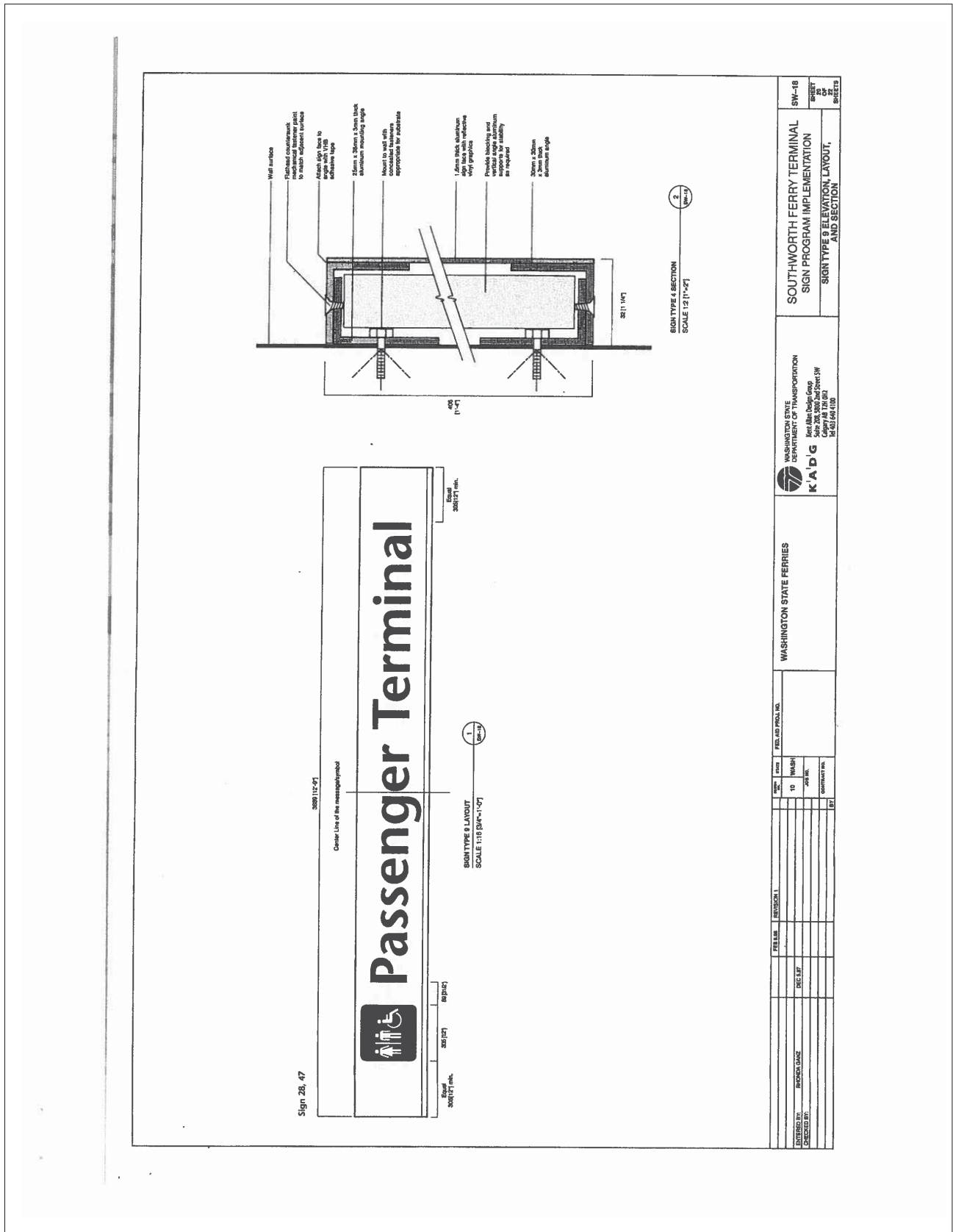


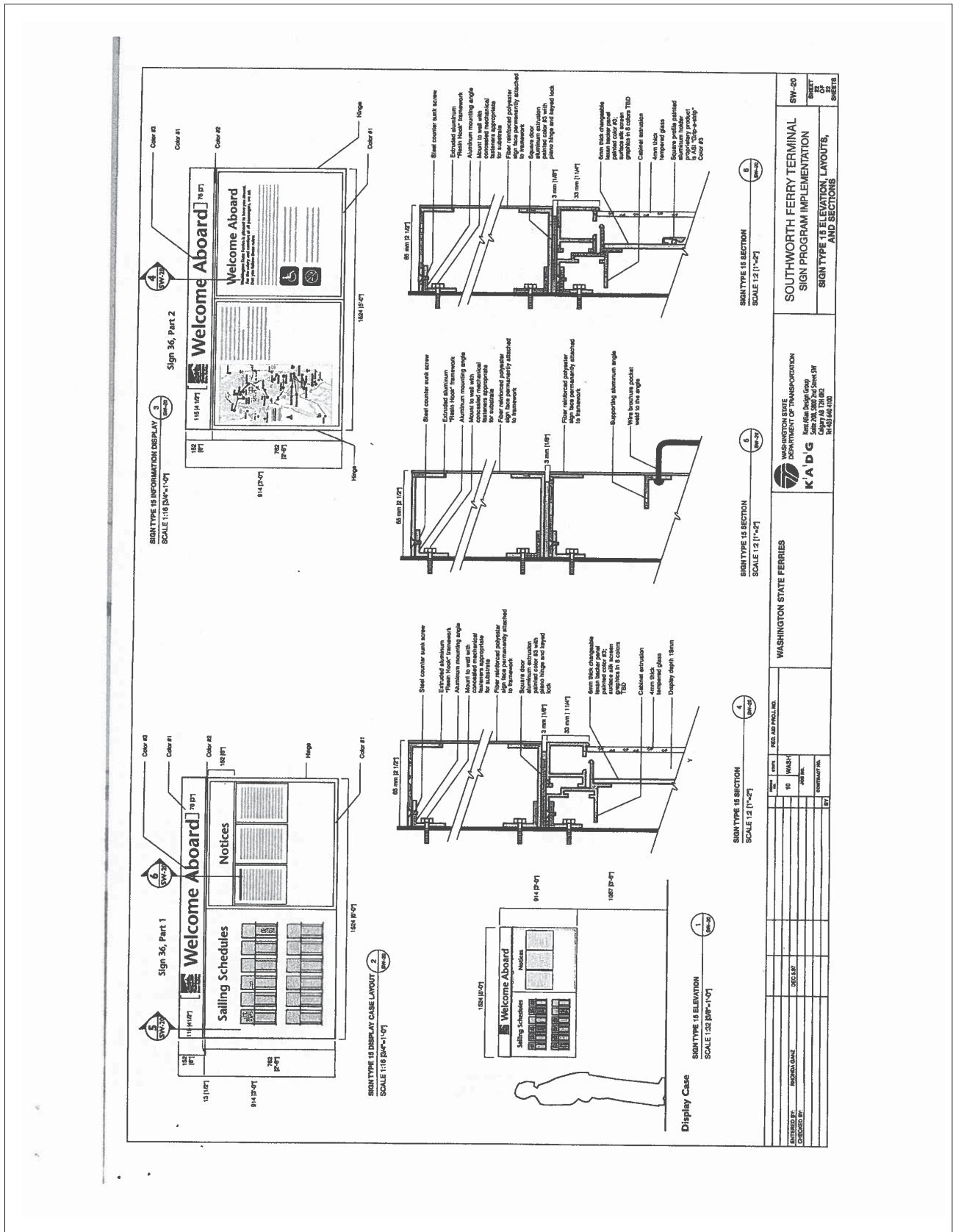
DESIGNED BY:	DESIGNED DATE:	DATE:	NO.:	REV.:	DATE:	BY:	CHKD.:	DATE:
			10	1				
FEDERAL PROJECT NO. _____ WASHINGTON STATE DEPARTMENT OF TRANSPORTATION K A D G Text: Alan Debe Gano 509.206.2002 ext 5166 SW 4097 W 73rd St BLDG 10110								
WASHINGTON STATE FERRIES SOUTH WORTH FERRY TERMINAL SIGN PROGRAM IMPLEMENTATION SIGN TYPE 8 (SMALL) ELEVATION, LAYOUTS, SECTIONS, AND FOOTING DETAIL								
SW-14 SHEET 18 OF 27 SHEETS								



SIGN TYPE 8 SECTION SCALE 1:2 (1'-4")		SIGN TYPE 8 FOOTING DETAIL SCALE 1:18 (SW-11-27)		SIGN TYPE 8 DETAIL SCALE 1:2 (1'-4")	
DESIGNED BY:	PROJECT NO.:	DATE:	SCALE:	DATE:	SCALE:
CHECKED BY:	PROJECT NO.:	DATE:	SCALE:	DATE:	SCALE:
APPROVED BY:	PROJECT NO.:	DATE:	SCALE:	DATE:	SCALE:
WASHINGTON STATE DEPARTMENT OF TRANSPORTATION K A D G Karl Alan Dickel, Chief 5400 12th Avenue SW Olympia, WA 98512 PH: 360.487.1100			WASHINGTON STATE FERRIES		
SOUTH-WORTH FERRY TERMINAL SIGN PROGRAM IMPLEMENTATION SIGN TYPE 8 ELEVATION, LAYOUT, SECTION AND DETAIL			SW-15		
SHEET 11			OF 17		
SHEETS			SHEETS		







DESIGNED BY	PROJECT NO.	DATE	SCALE	NO. OF SHEETS	SHEET NO.
PROJECT NAME	10 WASH STATE FERRIES	10/10/10	1:22 (P-1)	10	10
CHECKED BY	DESIGNER	DATE	SCALE	NO. OF SHEETS	SHEET NO.
WASHINGTON STATE FERRIES DEPARTMENT OF TRANSPORTATION KADG 3000 University Way Seattle, WA 98105 Copyright © 2010 10/10/10					
WASHINGTON STATE FERRIES SIGN PROGRAM IMPLEMENTATION SIGN TYPE 15 ELEVATION LAYOUTS AND SECTIONS					
SOUTH WORTH FERRY TERMINAL SIGN TYPE 15 ELEVATION LAYOUTS AND SECTIONS					