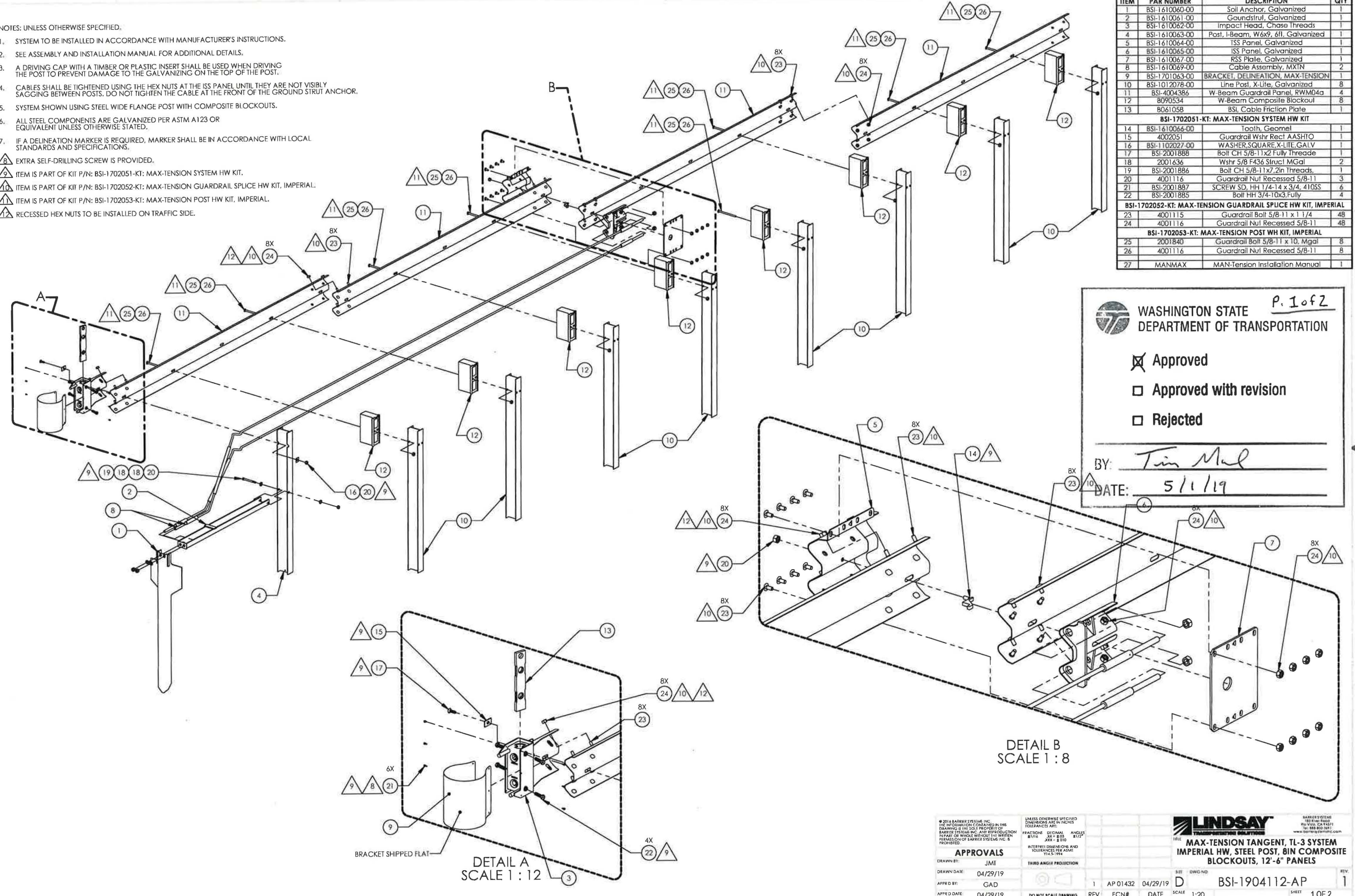


NOTES: UNLESS OTHERWISE SPECIFIED:

1. SYSTEM TO BE INSTALLED IN ACCORDANCE WITH MANUFACTURER'S INSTRUCTIONS.
2. SEE ASSEMBLY AND INSTALLATION MANUAL FOR ADDITIONAL DETAILS.
3. A DRIVING CAP WITH A TIMBER OR PLASTIC INSERT SHALL BE USED WHEN DRIVING THE POST TO PREVENT DAMAGE TO THE GALVANIZING ON THE TOP OF THE POST.
4. CABLES SHALL BE TIGHTENED USING THE HEX NUTS AT THE ISS PANEL UNTIL THEY ARE NOT VISIBLY SAGGING BETWEEN POSTS. DO NOT TIGHTEN THE CABLE AT THE FRONT OF THE GROUND STRUT ANCHOR.
5. SYSTEM SHOWN USING STEEL WIDE FLANGE POST WITH COMPOSITE BLOCKOUTS.
6. ALL STEEL COMPONENTS ARE GALVANIZED PER ASTM A123 OR EQUIVALENT UNLESS OTHERWISE STATED.
7. IF A DELINEATION MARKER IS REQUIRED, MARKER SHALL BE IN ACCORDANCE WITH LOCAL STANDARDS AND SPECIFICATIONS.

- EXTRA SELF-DRILLING SCREW IS PROVIDED.
- ITEM IS PART OF KIT P/N: BSI-1702051-KT: MAX-TENSION SYSTEM HW KIT.
- ITEM IS PART OF KIT P/N: BSI-1702052-KT: MAX-TENSION GUARDRAIL SPLICE HW KIT, IMPERIAL.
- ITEM IS PART OF KIT P/N: BSI-1702053-KT: MAX-TENSION POST HW KIT, IMPERIAL.
- RECESSED HEX NUTS TO BE INSTALLED ON TRAFFIC SIDE.

ITEM	PAR NUMBER	DESCRIPTION	QTY
1	BSI-1610060-00	Soil Anchor, Galvanized	1
2	BSI-1610061-00	Groundstrut, Galvanized	1
3	BSI-1610062-00	Impact Head, Chase Threads	1
4	BSI-1610063-00	Post, I-Beam, W6x9, 6ft, Galvanized	1
5	BSI-1610064-00	ISS Panel, Galvanized	1
6	BSI-1610065-00	ISS Panel, Galvanized	1
7	BSI-1610067-00	RSS Plate, Galvanized	1
8	BSI-1610069-00	Cable Assembly, MIXIN	2
9	BSI-1701063-00	BRACKET, DELINEATION, MAX-TENSION 1	
10	BSI-1012078-00	Line Post, X-Life, Galvanized	8
11	BSI-4004386	W-Beam Guardrail Panel, RWM04a	4
12	8090534	W-Beam Composite Blockout	8
13	8061058	BSI Cable Friction Plate	1
BSI-1702051-KT: MAX-TENSION SYSTEM HW KIT			
14	BSI-1610066-00	Toolh, Geomel	1
15	4002051	Guardrail Wshr Rect AASHTO	1
16	BSI-1102027-00	WASHER, SQUARE X-LITE, GALV	1
17	BSI-2001888	Bolt CH 5/8-11x2 Fully Threaded	1
18	2001636	Wshr 5/8 F436 Strucl MGal	2
19	BSI-2001886	Bolt CH 5/8-11x7.2in Threads	1
20	4001116	Guardrail Nut Recessed 5/8-11	3
21	BSI-2001887	SCREW SD, HH 1/4-14 x 3/4, 410SS	6
22	BSI-2001885	Bolt HH 3/4-10x3 Fully	4
BSI-1702052-KT: MAX-TENSION GUARDRAIL SPLICE HW KIT, IMPERIAL			
23	4001115	Guardrail Bolt 5/8-11 x 1 1/4	48
24	4001116	Guardrail Nut Recessed 5/8-11	48
BSI-1702053-KT: MAX-TENSION POST HW KIT, IMPERIAL			
25	2001840	Guardrail Bolt 5/8-11 x 10, Mgal	8
26	4001116	Guardrail Nut Recessed 5/8-11	8
27	MANMAX	MAN-Tension Installation Manual	1



P. 1 of 2

WASHINGTON STATE DEPARTMENT OF TRANSPORTATION

Approved
 Approved with revision
 Rejected

BY: Tim Muel
 DATE: 5/1/19

DETAIL B
SCALE 1 : 8

DETAIL A
SCALE 1 : 12

© 2018 BARRIER SYSTEMS, INC. THE INFORMATION CONTAINED IN THIS DRAWING IS THE SOLE PROPERTY OF BARRIER SYSTEMS, INC. ANY REPRODUCTION IN PART OR WHOLE WITHOUT THE WRITTEN PERMISSION OF BARRIER SYSTEMS, INC. IS PROHIBITED.

UNLESS OTHERWISE SPECIFIED DIMENSIONS ARE IN INCHES TOLERANCES ARE:
 FRACTIONS: ORIGINAL ANGLES
 1/16" ± 0.03 3/32" ± 0.03 1/8" ± 0.03 1/4" ± 0.04 3/8" ± 0.04 1/2" ± 0.04 3/4" ± 0.04 1" ± 0.04
 INTERPRET DIMENSIONS AND TOLERANCES PER ASME Y14.5-2014

APPROVALS

DRAWN BY: JMI
 DRAWN DATE: 04/29/19
 APPR'D BY: GAD
 APPR'D DATE: 04/29/19

THIRD ANGLE PROJECTION

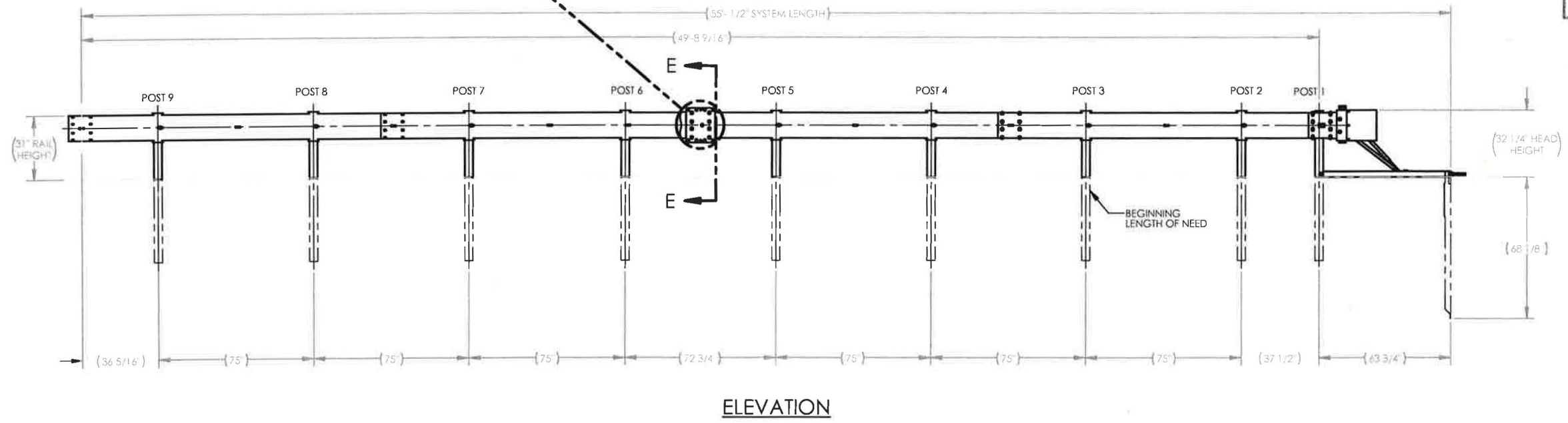
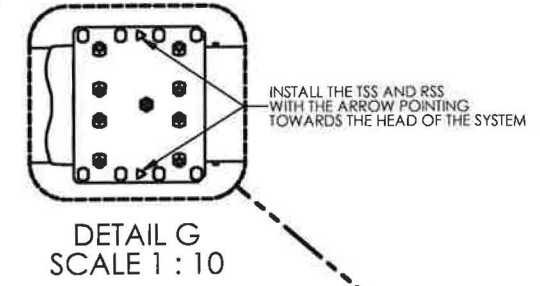
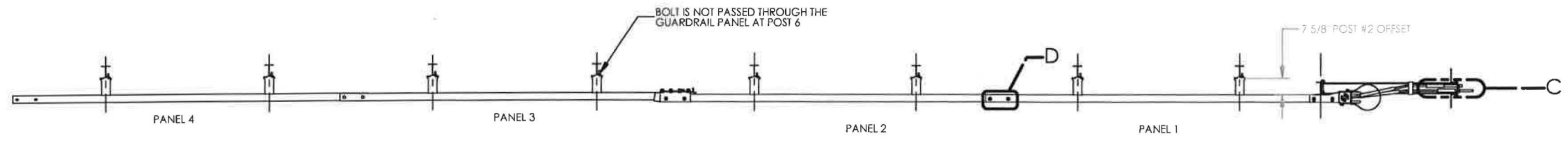
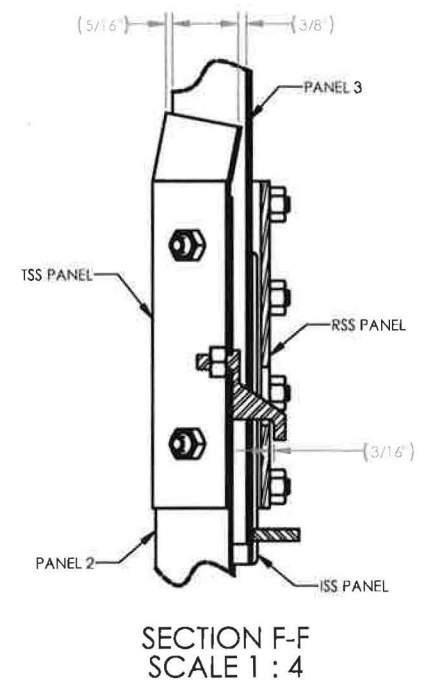
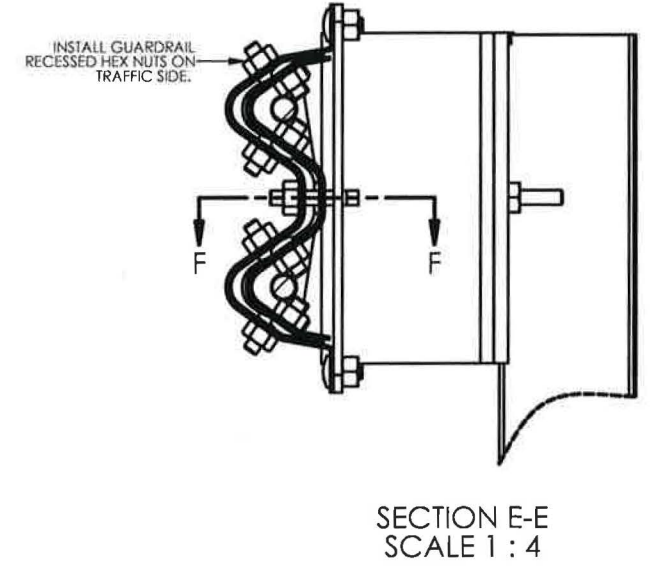
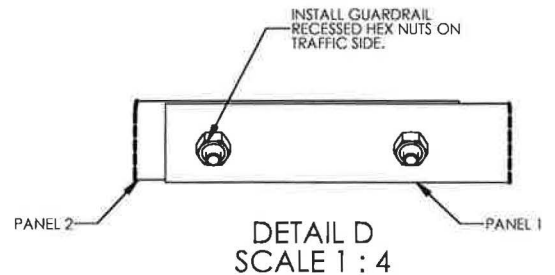
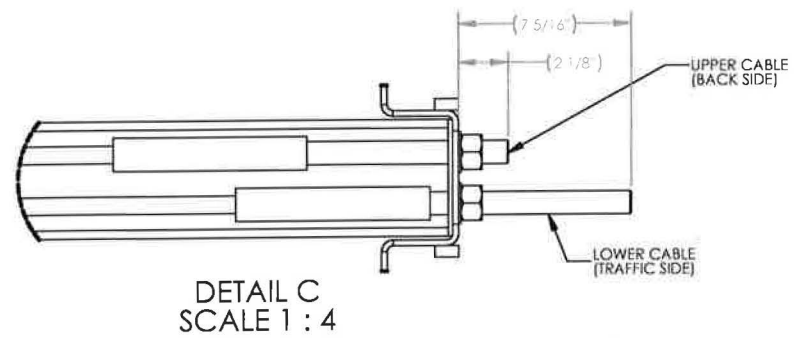
1 AP 01432 04/29/19 D BSI-1904112-AP 1

REV ECN# DATE SCALE 1:20 SHEET 1 OF 2

LINDSAY
TRANSPORTATION SOLUTIONS

150 River Road
 Vista, CA 92081
 Tel: 858-502-7811
 www.lindsaytransport.com

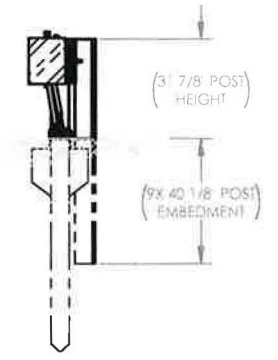
TITLE: **MAX-TENSION TANGENT, TL-3 SYSTEM IMPERIAL HW, STEEL POST, BIN COMPOSITE BLOCKOUTS, 12'-6" PANELS**



WASHINGTON STATE DEPARTMENT OF TRANSPORTATION *P. 2 of 2*

Approved
 Approved with revision
 Rejected

BY: T. Mel
 DATE: 5/1/19



SIZE	DWG NO.	REV.
D	BSI-1904112-AP	1
SCALE	1:30	SHEET 2 OF 2