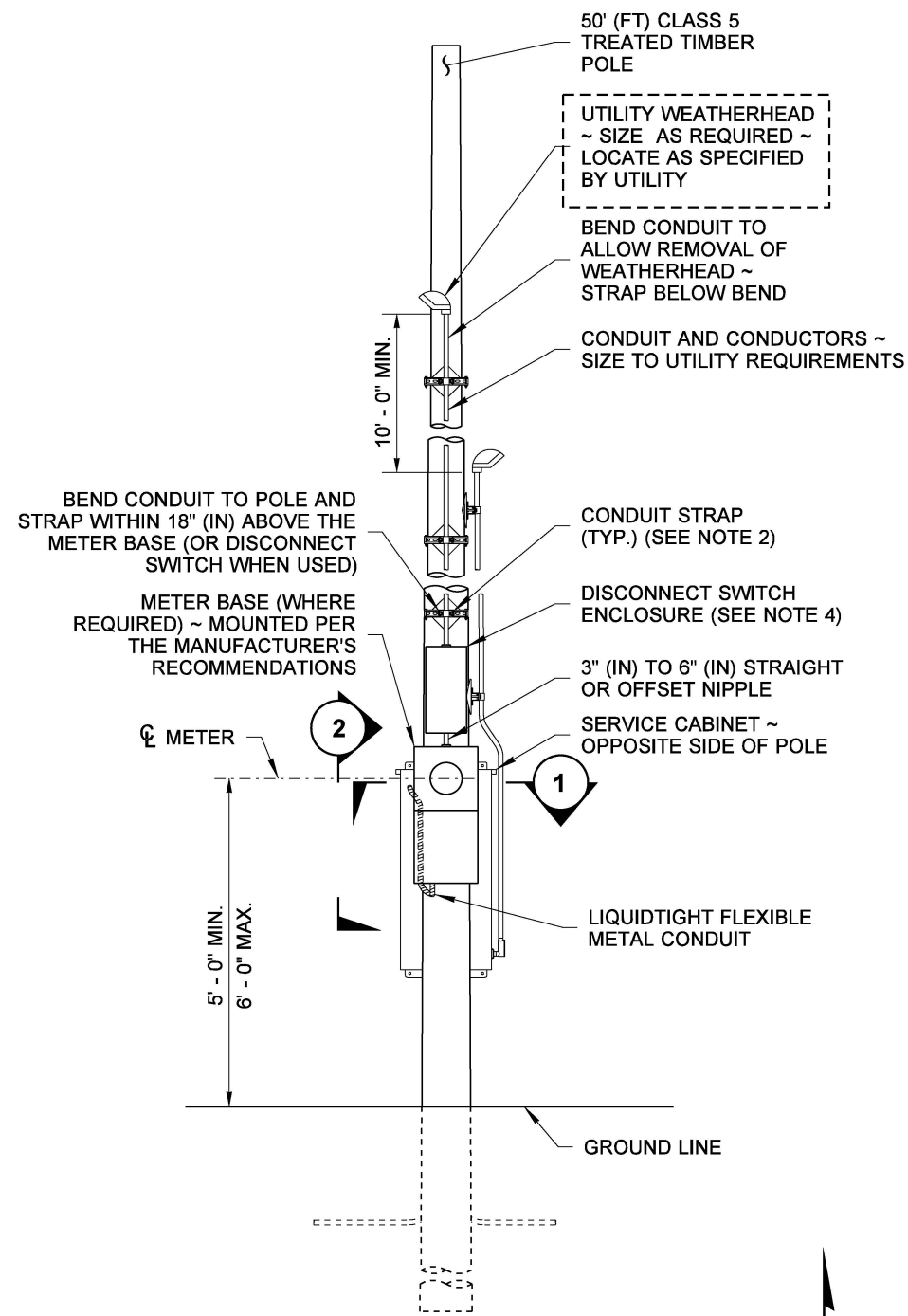
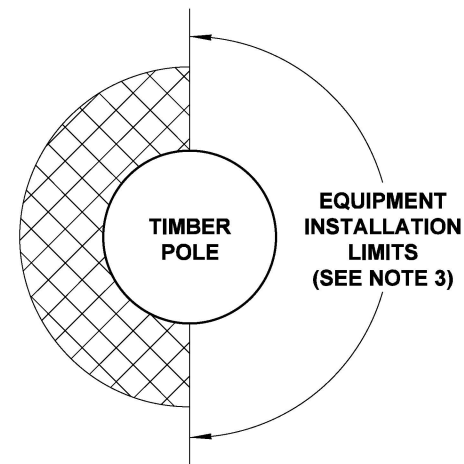


**ELEVATION VIEW
SERVICE CABINET SIDE**



**ELEVATION VIEW
METER PANEL SIDE**



**EQUIPMENT
INSTALLATION
LIMITS**

NOTES

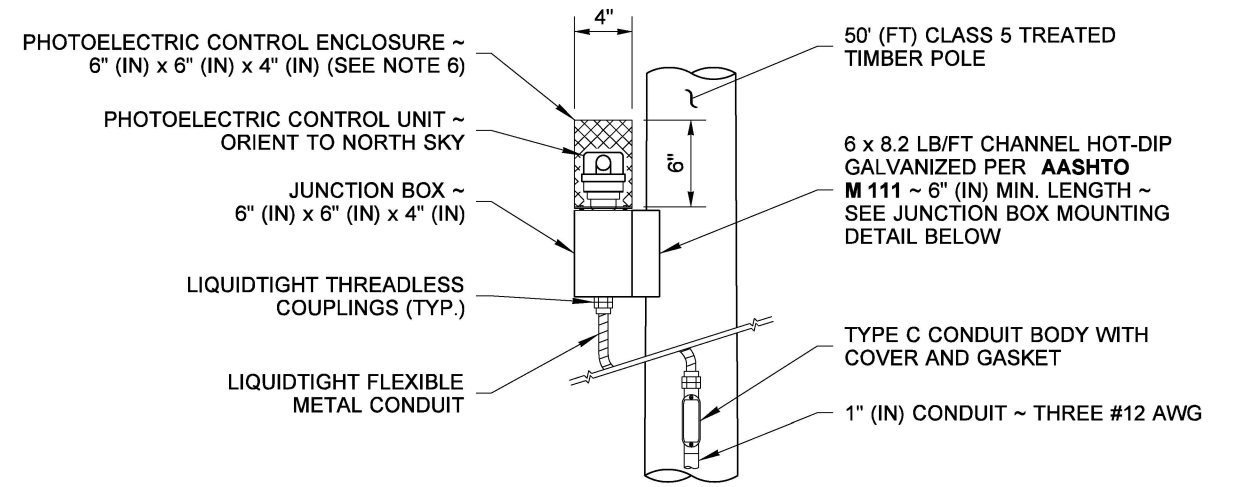
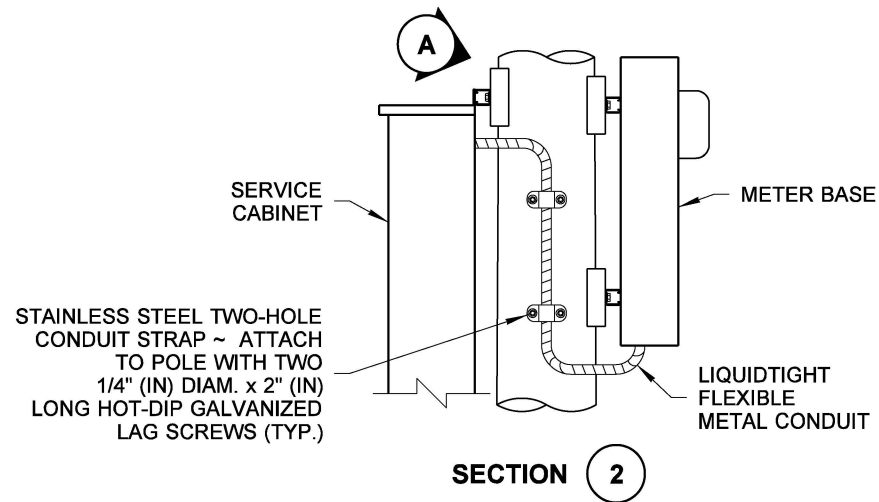
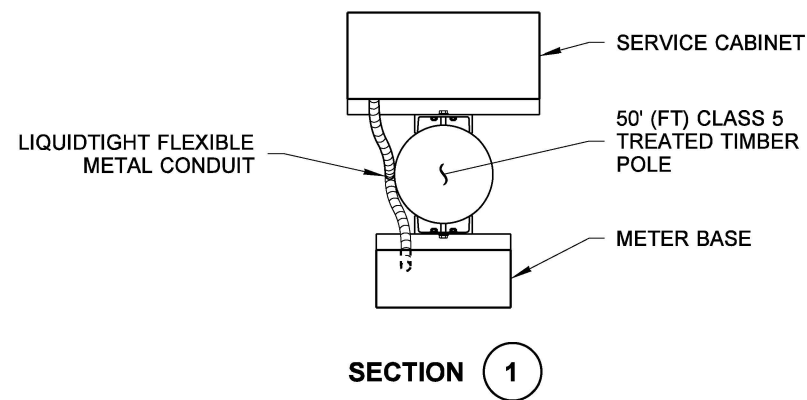
1. Metering arrangements may vary with different serving utilities. The Contractor shall verify the requirements of the utility prior to installing the service equipment.
2. All service pole conduits shall be secured to the pole with two-hole conduit straps spaced at 5' (ft) maximum centers. See **Standard Plans J-60.13 and J-60.14** for steel channel support and mounting details. Where required by the Utility, an alternative-use hot-dip galvanized standoff bracket may be used. See **ALTERNATE STANDOFF BRACKET DETAIL**.
3. No equipment shall be installed on the half of the pole facing the roadway with the exception of the meter socket. Meter may only be installed facing the roadway if required by the utility.
4. Where required by the serving utility, a service disconnect switch or breaker shall be installed above the meter socket in a separate rain-tight enclosure.
5. See **Standard Plan J-60.05** for grounding details.
6. Photoelectric Control Enclosure shall be fabricated from either:
 - a. 5/8" (IN) expanded steel mesh with welded seams and mounting flanges, hot-dip galvanized after fabrication. ~OR~
 - b. Type 5052 - H32 aluminum, with 5/8" (IN) x 5/8" (IN) openings equivalent to 5/8" (IN) expanded steel mesh.
 Enclosure shall be removable from the outside of the junction box.
7. The photoelectric control unit shall be centered in the photoelectric control enclosure to permit 360 degree rotation of the photoelectric control unit without removal of the photoelectric control unit or the photoelectric control enclosure.
8. All nuts, bolts, screws, and washers used for mounting the photoelectric control enclosure, conduit body covers, and junction box cover shall be **ASTM F593** or **A193 Type 304** or **Type 316** stainless steel.
9. Slotted steel channel and mounting hardware components shall be stainless steel. Conduit clamps shall be hot-dip galvanized steel or stainless steel.
10. Install conduit couplings on all conduits.
11. Conduit shall enter the cabinet behind the dead front, but clear of the lighting contactor(s).
12. Pole burial depth shall meet the requirements of **Standard Specification Section 8-20.3(13)A**.
13. See **Standard Plan J-60.13** for additional channel steel mounting details.



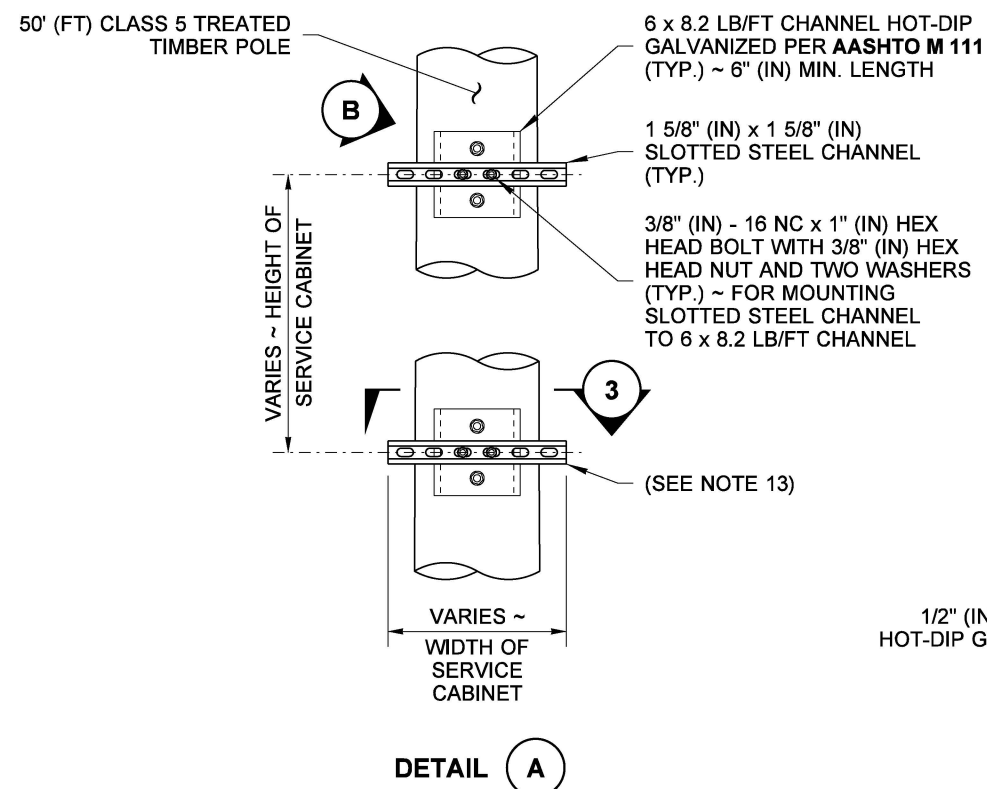
Jackson, Flint
Aug 24 2020 9:38 AM
**SERVICE CABINET
INSTALLATION
TIMBER POLE
STANDARD PLAN J-10.14-00**

SHEET 1 OF 2 SHEETS

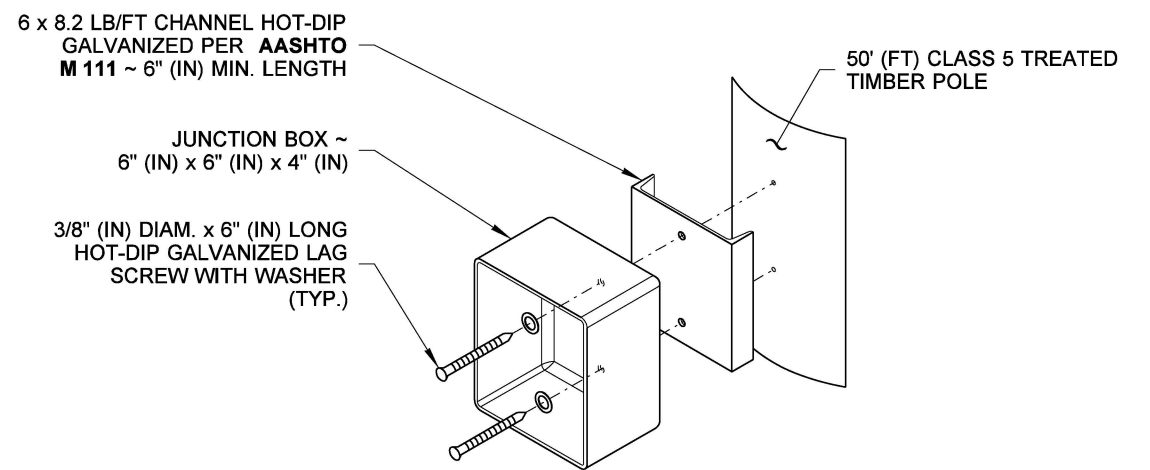
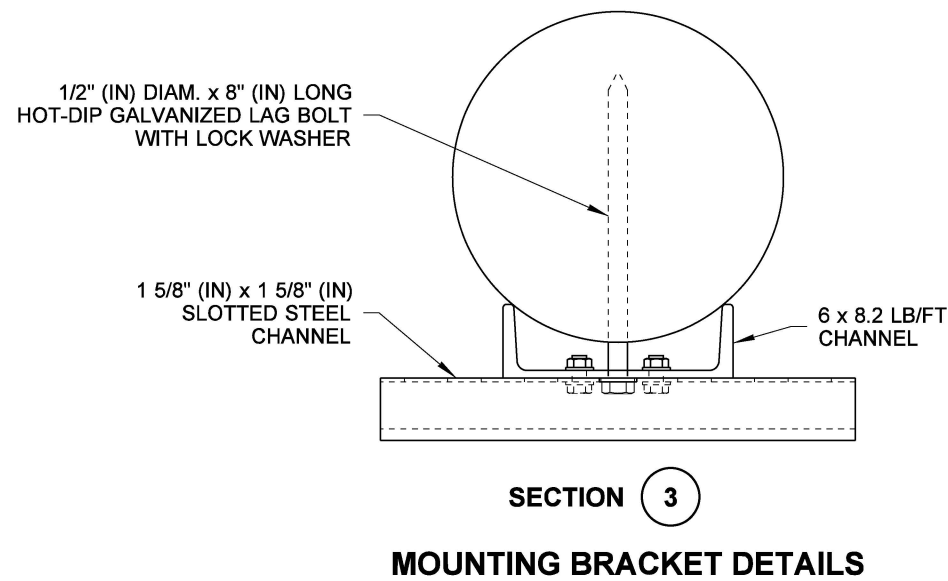
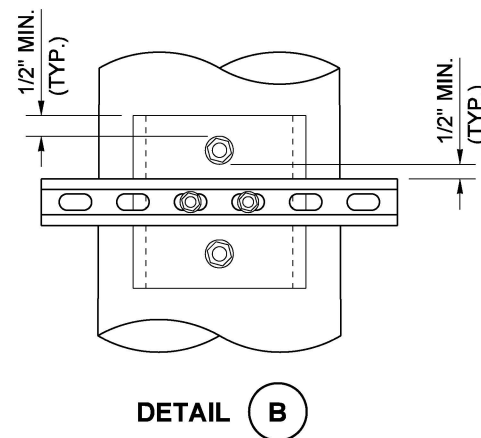
APPROVED FOR PUBLICATION
Date: 2020.09.16
10:13:44 -07'00'
STATE DESIGN ENGINEER
Washington State Department of Transportation



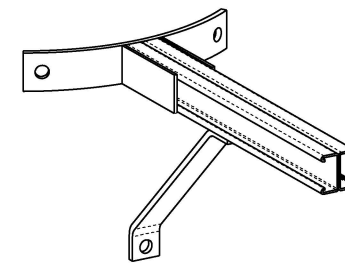
PHOTOELECTRIC CONTROL DETAILS



SERVICE CABINET MOUNTING DETAILS



JUNCTION BOX MOUNTING DETAIL



ALTERNATE STANDOFF BRACKET DETAIL (SEE NOTE 2)



Jackson, Flint
Aug 24 2020 10:23 AM

SERVICE CABINET INSTALLATION TIMBER POLE STANDARD PLAN J-10.14-00

SHEET 2 OF 2 SHEETS

APPROVED FOR PUBLICATION
Date: 2020.09.16 10:14:08
-07'00"
STATE DESIGN ENGINEER
Washington State Department of Transportation