

1.0 Purpose

The Washington State Department of Transportation (WSDOT) Hearing Conservation Program (HCP) is designed to protect workers with significant occupational noise exposures from hearing loss.

2.0 Scope and Applicability

This chapter applies to all employees who may be exposed to 85 decibels or greater as measured on the A-weighted scale (dBA), though different elements may apply depending on the nature of the noise exposure.

3.0 References

- WAC 296-817, *Hearing loss prevention (noise)*
<http://apps.leg.wa.gov/wac/default.aspx?cite=296-817>
- WAC 296-27-01113, *Recording criteria for cases involving occupational hearing loss*
<http://apps.leg.wa.gov/wac/default.aspx?cite=296-27-01113>

4.0 Definitions

A-Weighted – An adjustment to sound level measurements that reflects the sensitivity of the human ear. Used for evaluating continuous or average noise levels.

Baseline Audiogram – The audiogram against which future audiograms are compared. The baseline audiogram is collected when an employee is first assigned to work with noise exposure. The baseline audiogram may be revised if persistent standard threshold shift (STS) of improvement is found.

Recordable Threshold Shift – There is a change in the hearing threshold, relative to the baseline audiogram for that employee, of an average of 10 decibels (dB) or greater at 2000, 3000, and 4000 hertz (Hz) in one or both ears, AND the employee's overall hearing loss (threshold) is 25 dB or greater (averaged at 2000, 3000, and 4000 Hz) in the same ear as the change, AND age corrected.

Safety Organization – Headquarters Safety and Health Services Office staff, and Region Safety Office staff.

Standard Threshold Shift – A hearing level change, relative to the baseline audiogram, of an average of 10 dB or more at 2000, 3000, and 4000 Hz in either ear.

5.0 General Responsibilities

Are as assigned in [Chapter 1](#) of the *Safety Procedures and Guidelines Manual*, as well as the items below specific to Hearing Protection Policy. It is the responsibility of each employee to ensure implementation of WSDOT's Hearing Conservation Program.

5.1 Executive, Senior, and Mid-Level Management

- Understand and implement the provisions of WSDOT's Hearing Conservation Program.
- Ensure adequate funds are available to support the program including audiometric testing, employee training and appropriate hearing protection devices.
- Request engineering or administrative control alternatives be evaluated and implemented before employees are included in the HCP.
- Support supervisors in providing all elements of the HCP.

5.2 Supervisors

- Understand and implement the provisions of the Hearing Conservation Program.
- Assist Region Safety Office staff in identifying occupational noise exposures.
- Ensure that designated noise areas are clearly posted with warning signs.
- Ensure that employees attend required audiometric testing and training.
- Discuss noise hazards and hearing protection as a part of Pre-Activity Safety Planning.
- Assist Region Safety Office staff in coordinating training, audiometric testing, and follow-up investigations to hearing threshold shifts.
- Ensure that employees exposed to 85 dBA or greater (regardless of duration) wear hearing protection.
- Ensure that employees who will be exposed to noise, at or in excess of 85 dBA based on an eight-hour time-weighted average (8 hr TWA), obtain a baseline audiogram within 30 days of employment or transfer to a position with such noise exposures.
- Ensure that employees who are no longer exposed to high noise obtain a termination audiogram. These may include employees who transfer from high-noise positions or leave service with WSDOT.
- Know how to properly use and care for hearing protection devices.
- Assist in coordinating and conducting hearing threshold shift investigations.

5.3 Employees

5.3.1 Employees Enrolled in the HCP

- Comply with all provisions of the HCP.
- Undergo baseline, annual, and termination audiometric testing, as required by the program.
- Properly and consistently use and care for hearing protection devices.
- Attend scheduled training, testing, and/or retesting.
- Assist the supervisors and managers in identifying work activities and locations which may provide high noise exposure levels.
- Wear hearing protection appropriately.
- Cooperate when hearing threshold shift investigations are conducted.

5.3.2 Employees Not Required to Enroll in the HCP

Employees who have occasional exposure to occupational noise of 85 dBA or higher, but less than 85 dBA when averaged for an eight-hour exposure, are not required to participate in the HCP, but are required to use hearing protection when in environments at or above 85 dBA.

5.4 Human Resource Staff

- Include in the New Employee Orientation Packet a check-off for audiometric testing for employees who will be exposed to high-noise work areas.
- Notify supervisors of new personnel so that the supervisor can determine the employee's occupational noise exposure and work with the Region Safety Office in scheduling baseline audiograms if required in this policy.

5.5 Safety Organization

5.5.1 Safety and Health Administrator

- Implement a Hearing Conservation Program.
- Provide leadership and guidance on hearing protection and HCP administration.
- Develop program performance measurements, goals, and strategies.
- Identify and support program needs regarding personnel, training, and equipment.
- Align resources to meet program needs.

5.5.2 Industrial Hygienist

- Obtain and maintain contractual agreements with medical, training and equipment providers, as necessary.
- Provide day-to-day technical consultation and oversight of the HCP.
- Provide guidance, technical expertise, training, and support.
- Consult with and assist Region Safety staff, supervisors, and employees who are enrolled or participate in the HCP.
- Recognize, interpret, update, and implement regulatory compliance standards.
- Conduct, assist with, and coordinate occupational noise exposure monitoring.
- Identify hearing protection and HCP needs regarding personnel, training, and equipment.
- Provide training and information regarding the proper use and care of personal protective equipment (PPE) relative to the hearing protection and HCP.

5.5.3 Region and HQ Safety Offices

- Develop and implement the HCP through region executives, managers, and supervisors.
- Identify job classifications, work activities and areas, processes or tasks, and equipment that require workers to be enrolled in the HCP.
- Coordinate employee baseline, annual, and termination audiometric testing and training with contracted vendors and/or affiliate clinics.
- Evaluate the following, at a minimum, when responding to a standard threshold shift:
 - Employee noise exposure measurements.
 - Noise controls in the work area.
 - The selection of hearing protection available and refit employees as necessary.
 - Employee training on noise and the use of hearing protection and conduct additional training as necessary.
- Assist line management, such as managers and supervisors, in implementing activities toward the prevention of hearing loss.
- Coordinate, conduct, and assist with occupational noise exposure monitoring in accordance with regulatory requirements.
- Develop HCP performance measurements, goals, and strategies.

- Identify and support program needs regarding personnel, training, and equipment.
- Maintain records of region employees in HCP.

[Appendix 9-D](#) contains questions and answers on program issues with respect to responsibilities of Region Safety Office staff and supervisors.

6.0 Hearing Protection Policy

Hearing protection is required when working for any duration in an environment where the sustained noise levels are at or above 85 dBA.

This policy requires employees to use hearing protection anytime they are working in or around equipment that generates noise at or above 85 dBA, or are otherwise working in a location where background noise levels are at or above 85 dBA (i.e., freeway traffic noise, shop noise, overall construction site noise).

This policy does not require hearing protection where employees are working in conditions that are below 85 dBA but may be subject to occasional instantaneous noise level increases that exceed 85 dBA (i.e., rural setting and the occasional loud truck drives by).

Employees who are exposed to noise levels at or above 85 dBA on an eight-hour time weighted average exposure are required to participate in the Hearing Conservation Program (HCP). Revised HCP requirements include:

- New employees will obtain a baseline audiogram within 30 days of employment.
- Employees who transfer to an HCP position will obtain a baseline audiogram within 30 days of transfer.
- Employees leaving HCP positions will obtain a termination audiogram. This will include transfers and those leaving service.

6.1 Hearing Protection Devices (HPD) – Personal Protective Equipment (PPE)

WSDOT shall provide several types of hearing protection devices at no cost to employees. Hearing protection devices are available in facilities and vehicles throughout WSDOT. In the event that hearing protection is not readily available to an employee, the employee shall not work in areas or with equipment generating high noise levels (see examples in [Section 6.2](#), Typical Noise Exposures at WSDOT) until hearing protection is available.

Employees concerned about the use, care and effectiveness of hearing protection devices shall immediately contact their supervisor or their Region Safety Manager.

6.1.1 Allowance Payable to Designated Permanent Employees for Custom Molded Earplugs

When a permanent department employee (that is enrolled in the hearing conservation program) elects to purchase and wear custom molded earplugs when exposed to noise at or above 85dB during the course of regular duties, the employee is eligible for a reimbursement allowance of up to \$75 per biennium to help offset the purchase cost.

6.1.1.1 Procedure





Employee Provides Receipt – Employees must provide their supervisor with proof of purchase (receipt) of custom molded earplugs to request reimbursement

Supervisor Reviews and Approves Reimbursement – The supervisor ensures that any employee requesting reimbursement must be enrolled and participate in the hearing conservation program and exposed to noise at or above 85dB during their regular duties.

The supervisor makes a copy of the receipt and indicates they have verified the PPE meets the required standard for reimbursement on the Invoice Voucher, DOT Form 134-139 EF (see [Appendix 5-G](#) for an example of recommended text for verification). The receipt is then attached to the Invoice Voucher and submitted to the person with delegated authority to authorize/approve payments from their organization's budget for processing.

Disputes – Any disputes concerning the wearing of custom molded earplugs, eligibility for the allowance, custom molded earplugs quality, or exceptions to this procedure are to be referred to the Appointing Authority or designee.

Hearing Protection Devices (HPDs)

HPD	Description	Advantages	How to Use	Care and Cleaning
Formable Type Plugs 	Expandable and compressible foam construction.	Inexpensive and readily available.	Roll, pull, and hold. Compress plug into a tight cylinder. Quickly insert the plug (reach over your head and pull on the top of the opposing ear to open the ear canal during insertion). Hold plug in place until it has fully expanded.	Dispose after use or use manufacturer recommendations for cleaning and care.
Premolded Plugs 	As compared to the formable ear plugs, pre-molded plugs have more dense foam and plastic construction.	Longer use, inexpensive, various sizes, and readily available.	Choose the size that has optimal ear canal fit.	Wash in warm soapy water and keep dry.
Custom Molded Plugs 	Custom molded plugs are typically made of silicone that hardens while in ear of wearer providing a "custom fit."	Last for years and provide consistent protection.	Simply slide into ear.	Per manufacturer's instruction which may vary due to materials used.
Ear Muffs 	Hard plastic and foam construction.	Can be used in conjunction with other hearing protection devices.	Ear cups must fit snug around the entire ear.	Keep equipment clean with warm soapy water and keep dry.

6.2 Typical Noise Exposures at WSDOT

The following are some of the known and potential high noise work areas, activities, or equipment at WSDOT:

- Noise levels in the right of way along urban corridors can range from 80 dBA to 98+. These noise levels can increase if working in areas of amplification (e.g., tunnels, under bridges).
- Chain sawing noise levels can range from 100 dBA to 115 dBA.
- The use of pneumatic tools (e.g., jack hammers, rivet busters) noise levels can range from 95 dBA to 120 dBA.

- Typical WSDOT mowing equipment noise levels can range from 90 dBA to 100 dBA.
- Typical lawn maintenance or landscaping equipment (e.g., trimmers, edging equipment) noise levels can range from 85 dBA to 95 dBA.
- Typical maintenance shop equipment (e.g., grinders, air impact tools) noise levels can range from 90 dBA to 100 dBA.
- Road sweeping operation noise levels can range from 85 dBA to 95 dBA.
- Button/reflector installation work activities noise levels can range from 90 dBA to 115 dBA.

6.3 Job Titles to Be Considered for Audiogram Testing

- All TEF jobs.
- Most Maintenance jobs.
- All Rest Area jobs.
- All Field Engineering jobs.
- Other job titles identified by the supervisor and safety staff.

Regions should maintain a list of high noise work activities and employees who may be exposed to those noise levels. Furthermore, if there are changes to production or equipment that impact noise levels, the region should conduct noise monitoring to determine the new level of noise exposure.

The HQ Safety and Health Services Office and Northwest Region Safety websites provide a Noise Exposure Table with data and information for various WSDOT equipment.

wwwi.wsdot.wa.gov/employee/safety/evaluatingnoiseexposure.htm

6.4 Hearing Conservation Program (HCP) Participation

WSDOT's HCP requires baseline, annual, and termination (from high noise exposure) audiometric tests to determine the effectiveness of its Hearing Conservation Program. Enrollment and participation in the baseline, annual, and termination audiometric testing is mandatory for all WSDOT employees determined or estimated to have noise exposure at or in excess of 85 dBA based on an eight-hour day average. Enrollment and participation in the HCP shall be determined at the Region/HQ/WSF levels of the department.

Employees whose exposure to occupational noise is at least 85 dBA, but less than 85 dBA, when averaged for an eight-hour exposure, are not required to participate in the audiometric testing program.

6.5 Affiliate Clinics

Affiliate clinics in [Appendix 9-E](#) have been identified to conduct audiometric testing when it is not feasible to have audiometric testing done by WSDOT's primary contractor. Washington Audiology Services, Inc. has provided the list of clinics around the state that provide audiometric testing. Supervisors are required to contact their respective Region Safety Office for referral where the employees can obtain their audiometric testing. The HQ Safety and Health Office maintain the Affiliate Clinics list and update it when changes are received from Washington Audiology Services, Inc., or other sources.

7.0 Appendices

[Appendix 9-A Washington Audiology Testing Form](#)

(This form is provided by WA Audiology for employees to complete prior to audiogram testing.)

[Appendix 9-B Form letter for Potential Hearing Loss from a Baseline Audiogram](#)

[Appendix 9-C Tools for Determining Hearing Loss Baseline Calculation and OSHA-Recordability](#)

[Appendix 9-D Supervisor and Safety Manager Responsibilities – Questions and Answers](#)

[Appendix 9-E Affiliate Clinics](#)

Appendix 9-A Washington Audiology Testing Form

WASHINGTON AUDIOLOGY SERVICES, INC.

Last Name (Please Print)		First	Middle	Sex: <input type="checkbox"/> Male <input type="checkbox"/> Female
Social Security # (optional):	Date of Birth:	Date of Hire:	Employee ID#:	
WSDOT Region/Location:				
Org. Code:	Job:	Shift:	Shift Length:	

1 CHECK ALL THAT APPLY JUST BEFORE YOUR HEARING TEST:

1. IS THIS YOUR FIRST HEARING TEST WITH YOUR COMPANY? YES NO

2. HAVE YOU BEEN EXPOSED TO **LOUD*** NOISE IN THE PAST 14 HOURS? YES NO
 (LOUD* = If you would have to shout to be heard at arm's length away during the noise.)
 IF YES, DESCRIBE THE NOISE: _____

3. IF YES, DID YOU WEAR HEARING PROTECTION DURING THE ENTIRE NOISE EXPOSURE? YES NO

4. WHEN IN HIGH NOISE AREAS AT WORK, I USE MY HEARING PROTECTION: (CHECK A BOX)

Never = 0%						Always = 100%
Not Exposed	0 0%	1 20%	2 40%	3 60%	4 80%	5 100%

5. HOW WOULD YOU RATE YOUR HEARING? (CIRCLE ONE) UNKNOWN, VERY POOR, POOR, AVG, GOOD, VERY GOOD

6. I wear: ear plugs ear muffs banded caps custom earplug (Brand & Model): _____

<p>2 CHECK ALL THAT APPLY IN YOUR LIFETIME:</p> <p><input type="checkbox"/> Perceived hearing loss <input type="checkbox"/> L <input type="checkbox"/> R</p> <p><input type="checkbox"/> Dr. evaluated hearing loss <input type="checkbox"/> L <input type="checkbox"/> R Approximate Date(s) _____ Cause, if known _____</p> <p>19 <input type="checkbox"/> High blood pressure</p> <p>20 <input type="checkbox"/> Have seen Dr. for ear problems <input type="checkbox"/> L <input type="checkbox"/> R Describe _____</p> <p>21 <input type="checkbox"/> Ear surgery <input type="checkbox"/> L <input type="checkbox"/> R</p> <p>22 <input type="checkbox"/> Head injury/unconsciousness</p> <p>23 <input type="checkbox"/> Hearing Aid(s) <input type="checkbox"/> L <input type="checkbox"/> R</p> <p>32 <input type="checkbox"/> Hearing loss common in family</p> <p>36 <input type="checkbox"/> Military service</p> <p>37 <input type="checkbox"/> Noisy hobbies List: _____</p> <p>39 <input type="checkbox"/> Firearms: I shoot <input type="checkbox"/> L or <input type="checkbox"/> R handed <input type="checkbox"/> Worked in noisy jobs previously</p> <p>00 <input type="checkbox"/> I have read all the above and none apply. This audiometric evaluation is not meant to be a substitute for regular medical care. If you are experiencing problems or concerns with your ears and/or hearing, please seek the advice of your physician.</p>	<p>3 CHECK ALL THAT APPLY WITHIN THE LAST 12 MONTHS:</p> <p><input type="checkbox"/> Have seen doctor for ears within the last 12 months? (explain below) <input type="checkbox"/> L <input type="checkbox"/> R</p> <p><input type="checkbox"/> Ear problems when using hearing protection devices? <input type="checkbox"/> L <input type="checkbox"/> R</p> <p style="text-align: right;">Have seen Dr.</p> <p>10 <input type="checkbox"/> Ear pain (continuous or often) <input type="checkbox"/> L <input type="checkbox"/> R - <input type="checkbox"/></p> <p>11 <input type="checkbox"/> Ear discharge (pus) <input type="checkbox"/> L <input type="checkbox"/> R - <input type="checkbox"/></p> <p>12 <input type="checkbox"/> Unexplained dizzy spells</p> <p>13 <input type="checkbox"/> Severe ringing in ears <input type="checkbox"/> L <input type="checkbox"/> R - <input type="checkbox"/> <input type="checkbox"/> Constant <input type="checkbox"/> Intermittent Number of years: _____</p> <p>14 <input type="checkbox"/> Sudden hearing loss <input type="checkbox"/> L <input type="checkbox"/> R - <input type="checkbox"/></p> <p>15 <input type="checkbox"/> Fluctuating hearing loss <input type="checkbox"/> L <input type="checkbox"/> R - <input type="checkbox"/></p> <p>16 <input type="checkbox"/> Feeling of fullness in ears <input type="checkbox"/> L <input type="checkbox"/> R - <input type="checkbox"/> (unrelated to common cold)</p> <p>35 <input type="checkbox"/> Do you have a head cold, sinus or allergy problems TODAY that seems to be affecting your ears or hearing? Still experiencing any of the above reported symptoms? <input type="checkbox"/> Yes <input type="checkbox"/> No</p> <p>00 <input type="checkbox"/> I have read all of the above and none apply.</p>
--	---

PLEASE EXPLAIN ANY CHECKED RESPONSES:

OTOSCOPIC: L _____ R _____	Tester Comments: _____ _____ _____
-------------------------------	--

I authorize the release of my hearing test data and the information I have provided above to my employer or other health care providers designated by my employer for the purposes of the hearing conservation program.

Employee signature: _____ Date: _____

e:\general office\client forms\testing\was annual testing form updated 1-24-00

Appendix 9-B**Form Letter for Potential Hearing Loss from a Baseline Audiogram**

Date:

Employee:

Address:

Subject: Audiometric testing (Audiogram) Results

Dear Employee:

The Washington State Department of Transportation (WSDOT) provides a comprehensive hearing protection and Conservation Program (HCP). As part of its program, WSDOT has an aggressive audiometric testing and training program. It is important for your safety, the safety of your co-workers, and that of the motoring public that your hearing is conserved and hearing loss is prevented.

As a WSDOT employee, we expect you to protect your hearing. Every WSDOT employee who is exposed to noise level of at least 85 dBA is expected to wear hearing protection. Employees who are occupationally exposed to high noise levels (85 decibels as averaged over an 8-hour period) shall be enrolled and participate in the WSDOT Hearing Conservation Program. WSDOT provides hearing protection devices at facilities across the state. If your job activities require you to be exposed to high noise levels, you are required to use and maintain all appropriate hearing protection devices. We also expect and strongly encourage you to protect your hearing away from work.

The results of your recent audiometric test indicate that you may have a hearing loss which may be attributable to your exposure to excessive noise in the past. We encourage you to consult with your medical provider regarding important hearing conservation matters.

Enclosed please find your audiometric test results.

May you have a safe and healthy career with WSDOT. Should you have any questions or if I can provide you with any additional information, please don't hesitate to contact the Regional Safety Office.

Sincerely,

Region Safety Manager/Office

cc: Employee Supervisor

To: Outside Audiogram Provider (Place clinic name here)

Audiometric Testing Authorization Form

This individual has been instructed to obtain a audiometric test as part of his/her required participation in a Hearing Conservation Program provided by his/her employer, the Washington State Department of Transportation (WSDOT). This Hearing Conservation Program is in accordance with Chapter 296-817 WAC of the Division of Occupational Safety and Health (DOSH). Please adhere strictly with the outline below which summarizes what is required of your clinic with regards to this audiometric test.

Pure tone audiometric testing only. Please obtain thresholds bilaterally at the following frequencies: 500, 1000, 2000, 3000, 4000, 6000, and 8000 Hz.

Please use the Washington Audiology Testing Form attached form (below) for recording threshold and medical history information. Please note that the employee must sign the statement at the bottom which authorizes his/her release of information to employer designated health care providers for the purposes of the Hearing Conservation Program.

Results of the audiometric test are to be sent or faxed to Washington Audiology Services, Inc. within 48 hours of the date of testing. This is critical because retesting, if applicable, is only permitted within a specified period of time from the original test date.

Washington Audiology Services, Inc.
6987 Perimeter Road So, Ste 100
Seattle, WA 98108
Fax: 206 764-4760

Audiometric tests must meet DOSH standards for Hearing Conservation Programs. This means that certain required standards apply to audiometric testers, audiometers, sound booths, etc. You already have or will be asked by Washington Audiology Services, Inc. to complete a survey to ensure that you meet these requirements and you may be asked to provide them with records to document this compliance. WSDOT requests your support in this very critical process.

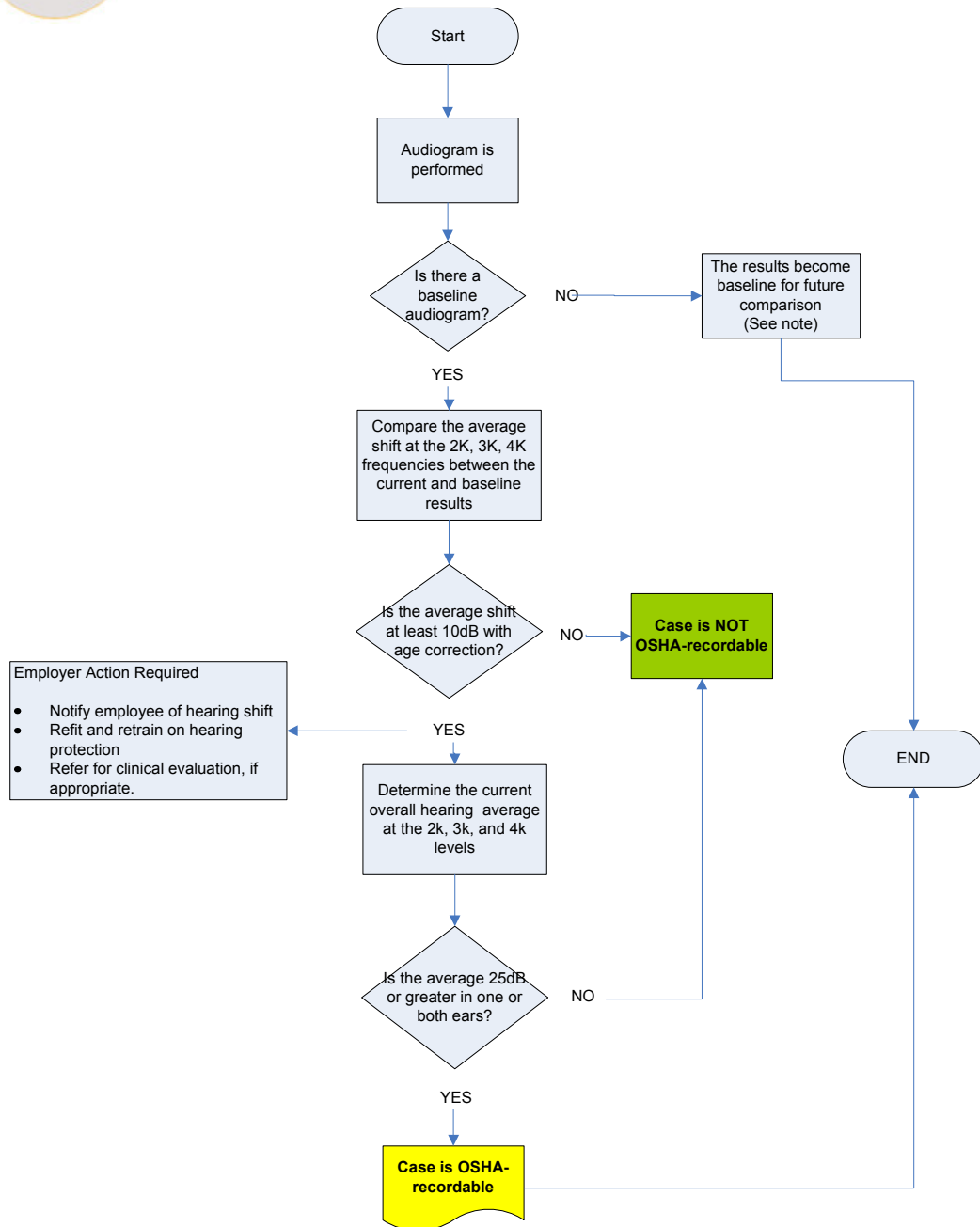
Please send all invoices to Regional Safety Office: (address)

Thank you for your cooperation in these matters. Please contact the WSDOT individual noted below or Washington Audiology Services, Inc. with any questions you may have. Thank you.

Employee Signature/Date _____

Supervisor or Safety Manager Signature/Date/Phone _____

Tools for Determining Hearing Loss Baseline Appendix 9-C Calculation and OSHA-Recordability



NOTE: The baseline for comparison with annual audiograms will remain the same until the baseline is changed as a result of an OSHA-recordable case (that is, the case meets both the 10dB with age correction shift AND the 25dB average hearing at 2, 3, and 4K frequencies). The results of the OSHA-recordable case then becomes the new baseline for future comparison.

Supervisor and Safety Manager

Appendix 9-D Responsibilities – Questions/Answers

Who is required to be enrolled in the WSDOT Hearing Conservation Program?

WSDOT employees who have occupational exposure to noise at or in excess of 85 decibels based on an eight-hour time weighted average must participate in the HCP. All new WSDOT employees who may be exposed at or above the 85 dBA noise exposure criteria based on an eight-hour day shall be provided with a baseline audiogram within 30 days of employment. [Appendix 9-A](#) form letter will be provided to new employees whose baseline audiometric test indicates hearing loss (25 dBA or greater average at the 2000, 3000, 4000 hertz levels).

Should WSDOT employees have their high noise exposure termination audiogram when transferred from a high noise “field” position to a low-noise position (office setting) or when leaving WSDOT service?

Yes. WSDOT employees who transfer from high-noise positions to low-noise positions or leave WSDOT service will undergo a termination audiogram. This final audiometric test may be performed during a regularly scheduled testing schedule with the contract audiogram testing provider or at an affiliate clinic of the contracted audiometric service provider. The final audiometric testing results shall be provided to the employee in writing.

What are some typical employee job classifications potentially requiring enrollment in the HCP?

- Maintenance employees (Highways and Bridges)
- Equipment, Facilities, and Landscape employees
- Traffic Signal employees
- Transportation Technicians (field)
- Transportation Engineers (field)
- Avalanche Control employees
- Transportation Planning Specialists (field)
- Drillers
- Safety Employees
- Carpenters
- Caretakers
- Electronic Technicians (field)
- Electrical Engineers (field)

The above classifications are not all inclusive. Supervisors and managers of WSDOT employees, working together with their respective safety offices, shall make final determination for HCP enrollment based on potential and estimated noise exposures (see the Excel file in Section 3, Sound Level Readings, for a list of noise sources).

If employees want to participate in the HCP and don't have noise exposure as part of their regular job duties, can they have their audiometric tested annually as part of the WSDOT audiometric testing program?

No. If an employee does not have occupational noise exposure as part of their normal work operations, participation or enrollment in the WSDOT audiometric testing program is not authorized/approved.

Who is responsible for reporting OSHA recordable hearing losses?

The region is responsible for reporting the OSHA recordable hearing loss cases to HQ Safety and Health Office based on audiogram results from an authorized audiogram provider. Headquarters will complete the OSHA 300 log. See [Appendix 9-C](#), Flow Chart in Determining Hearing Loss Baseline Calculation and OSHA-recordability.

Who is responsible for maintaining and compiling audiology testing data/information?

HQ Safety and Health Office will maintain contractual agreements with audiometric providers to maintain testing and training records. As part of the contractual agreement, the audiometric vendor shall be responsible for maintaining employee records and other pertinent data/information. The HQ Safety and Health Office will routinely receive reports from the audiometric testing providers of the results of audiograms conducted.

What happens if an employee has his/her audiometric tested at another clinic?

All attempts should be made to get the employee's audiometric tested through the contracted audiometric vendor or one of their affiliate clinics. If an employee cannot get their audiometric tested at Washington Audiology or an affiliate clinic – then the employee is required to use the form provided in [Appendix 9-B](#).

What happens if a Recordable Threshold Shift is observed in a WSDOT employee?

If you believe the audiogram may be inaccurate or the loss may not be persistent (e.g., employee had sinus congestion, testing was conducted with high levels of external noise), you can retest. If a retest is conducted within 30 days and indicates there was no RTS, it does not need to be recorded on the OSHA 300. If testing greater than 30 days after the initial test indicates the shift was not persistent, the entry on the 300 log can be deleted or lined out.

What happens if retesting confirms the STS?

If the RTS is confirmed, the following action will be taken:

- The employee shall be notified of the STS in writing by the RSO.
- Evaluate the following, at a minimum, when responding to a standard threshold shift:
 - Employee noise exposure measurements.
 - Noise controls in the work area.
 - The selection of hearing protection available and refit employees as necessary.
 - Employee training on noise and the use of hearing protection and conduct additional training as necessary.

Appendix 9-E**Affiliate Clinics**

West Coast Hearing Clinic
1812 Summer Avenue
Aberdeen, WA 98520
(360) 533-0633 or 1-800-962-1396

North Cascade ENT Clinic
20302 77th Avenue NE
Arlington, WA
(360) 435-6300

Occupational Health Services – Auburn
1000 Auburn Way South
Auburn, WA 98002
(253) 395-2002

Hear for Life
124 Winslow Green
Bainbridge Island, WA 98110
(206) 842-6374

Evergreen Speech & Hearing
1800 116th Avenue NE Ste #103
Bellevue, WA 98004
(425) 454-1883

Whatcom Occupational Health
3015 Squalicum #220
Bellingham, WA 98225
(360) 676-1693

Northland ENT
3130 Sequalicum Prkway Ste #100
Bellingham, WA 98225-1936
(360) 734-6645

Kitsap Audiology
2635 Wheaton Way
Bremerton, WA 98310
(360) 373-1250

Advanced Hearing & Speech
1800 Cooks Hill Road Suite K
Centralia, WA 98531
(360) 807-8856

Colville Medical Group (NE Medical Group)
1200 East Columbia
Colville, WA 99114
(509) 684-3701

Everett Clinic – Occupational
3927 Rucker Avenue
Everett, WA 98201
(425) 317-3632

Sonus Pacific Hearing & Speech Services
3224 Colby Avenue #B
Everett, WA 98201
(425) 259-5066

Healthforce (Paine Field)
11001 31st Place West #1
Everett, WA 98204
(425) 267-0299

Healthforce (Formerly Providence Occ Med)
3311 Wetmore Avenue
Everett, WA 98201-4322
(425) 259-0300

U.S. Healthworks
1300 South 320th Street
Federal Way, WA 98003
(253) 839-2727

Multicare Healthworks
502 54th Avenue East
Fife, WA 98424
(253) 459-7500

Virginia Mason
100 NE Gilman
Issaquah, WA 98027
(425) 557-8000

Columbia Basin Hearing Center
1149 N. Edison ste D
Kennewick, WA 99336
(509) 736-4005

KGH Occupational Health Services
241 W 8th Avenue
Kennewick, WA 99936
(509) 586-5133

U.S. Healthworks
24031 104th Avenue SE
Kent, WA 98031
(253) 852-1824

Hear for Life
25995 NE Barber Cut Off Road
Kingston, WA 98346
(360) 297-0431

Evergreen Speech & Hearing – Kirkland
12333 NE 130th Lane Ste #203
Kirkland, WA 98034
(425) 899-5050

Lower Columbia Hearing Services
820 11TH Avenue Ste #A
Longview, WA 98632-2402
(360) 425-0044

U.S. Healthworks – Lynnwood
4320 196th Street SW Ste #428
Lynnwood, WA 98036
(425) 774-8758

Moses Lake Clinic
840 East Hill
Moses Lake, WA 98837
(509) 765-0216

North Cascade ENT Clinic
111 South 13th Street
Mount Vernon, WA 98273
(360) 336-2178

Sound ENT Olympia
406 Yauger Way #B
Olympia, WA 98502
(360) 754-6069

Robertson Hearing Clinic
3230 14th Avenue NW
Olympia, WA 98502
(360) 866-2500

Hear for Life
115 Village Way
Port Ludlow, WA 98365
(360) 437-7767

Peninsula Hearing Inc.
19319 7th Avenue Ste #114
Poulsbo, WA 98370
(360) 697-3061

Hearing Advantage (The)
20700 Bond Road NE
Poulsbo, WA 98370
(360) 697-1300

U.S. Healthworks
3850 South Meridian
Puyallup, WA 98373
(253) 840-1840

Evergreen Speech & Hearing – Redmond
8301 161st Avenue NE Ste #203
Redmond, WA 98052
(425) 882-4347

U.S. Healthworks
15937 Redmond Way
Redmond, WA 98052
(425) 882-0100

Occupational Health Services – Renton
3600 Lind Avenue SW #170
Renton, WA 98055
(425) 656-5020

Columbia Basin Hearing Center
215 Van Gieson
Richland, WA 99352
(509) 943-2682

U.S. Healthworks – North Seattle
8313 Aurora Avenue North
Seattle, WA 98103
(206) 784-0737

U.S. Healthworks
1151 Denny Way
Seattle, WA 98109
(206) 682-7418

Work Clinic
13030 Military Road South Ste #100
Seattle, WA 98168
(206) 243-9675

Healthforce Occupational Medicine
3223 First Avenue South Ste #C
Seattle, WA 98134
(206) 624-3651

North Seattle Public Health Center
10501 Meridian Avenue North
Seattle, WA 98733
(206) 296-4765

Hearing Advantage (The)
777 North Fifth Avenue Ste #201
Sequim, WA 98382
(360) 582-2616

Shelton Family Medicine
939 Mountain View Drive Ste #100
Shelton, WA 98584
(360) 426-2653

Spokane Valley ENT
1300 West Knox Avenue
Spokane, WA 99205
(509) 354-6450

Spokane ENT
217 W. Cataledo
Spokane, WA 99201
(509) 789-1020

Occupational Medicine Associates
323 East Second Avenue Ste #102
Spokane, WA 99202
(509) 455-5555

U.S. Healthworks – N. Newport Way
9222 North Newport Hwy Ste #1
Spokane, WA 99218
(509) 467-4545

Occupational Health Solutions, Inc.
P.O Box 14317 (99206)
200 N. Mullan Ste #222
Spokane, WA 99214
(509) 534-6820

Multicare Healthworks – Allenmore
Medical Center
1901 S. Union Street #A-203
Tacoma, WA 98405
(253) 459-6811

Port Clinic
1930 Port of Tacoma Road
Tacoma, WA
(253) 272-6677

Dr. Rone & Erwin
316 MLK Jr. Way #305
Tacoma, WA 98405
(253) 272-7114

U.S. Healthworks – Tacoma
2624 S. 38TH STREET
Tacoma, WA 98984
(253) 475-5908

U.S. Healthworks
200 Andover Park East #8
Tukwila, WA 98188-3722
(206) 575-3136

Healthforce – Tukwila
6720 Fort Dent Way
Tukwila, WA 98188-2580
(206) 242-3651

Columbia River Occupational Health
2105 NE 129th Street #107
Vancouver, WA 98686
360-891-4900

Evergreen Audiology Clinic
16209 SE McGillivray Blvd #M
Vancouver, WA 98683
(360) 892-3445

Earcare Hearing Aid Centers
8317 E. Mill Plain Blvd
Vancouver, WA 98664
(360) 690-4388

Walla Walla ENT Clinic
320 Willow
Walla Walla, WA 99362
(509) 525-3720

Yakima Hearing & Speech Center
303 S. 12th Avenue
Yakima, WA 98902
(509) 453-8248