



216 N. 2<sup>nd</sup> Street  
Raymond, WA 98577

## 6-YEAR TRANSIT DEVELOPMENT PLAN 2021 – 2026

And

## 2020 ANNUAL REPORT

Date of Public Hearing: August 12<sup>th</sup>, 2021

# **Six-Year Transit Development Plan**

**2021 – 2026**

Public Hearing Date – August 12<sup>th</sup>, 2021

## **Pacific Transit System**

**Raymond, Washington  
Pacific County**

***Pacific Transit System  
Transit Development Plan  
2021-2026***

**Board of Directors**

Jerry Phillips  
City of Long Beach Mayor

Mike Runyon  
Pacific County Commissioner

Gary Forner  
City of Ilwaco Mayor

Tony Nordin  
City of Raymond Mayor

Lisa Olsen, Chair  
Pacific County Commissioner

Frank Wolfe  
Pacific County Commissioner

Julie Struck  
City of South Bend Mayor

David Sharwark, ATU President  
Non-Voting Labor Representative

**Executive Director**

Michael Wagner

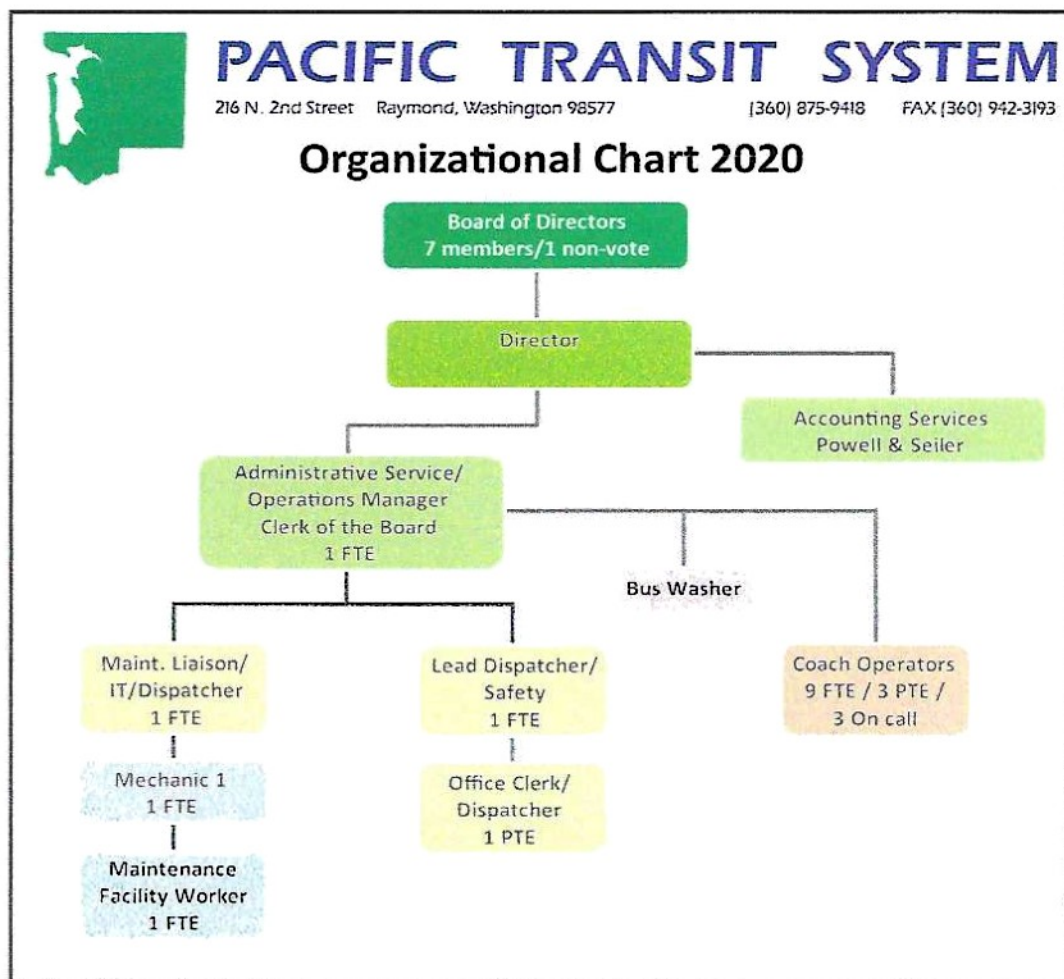
## Table of Contents

<b>Section</b>	<b>Title</b>	<b>Page</b>
I	Organization	4-5
II	Physical Plant	5
III	Service Characteristics	5-6
IV	Service Connections	6
V	Activities in 2020	6-7
VI	Proposed Action Strategies, 2021 - 2026	7-8
VII	Proposed Changes, 2021- 2026	9
VIII	Capital Improvement Program, 2021 - 2026	10
IX	Operating Data, 2020 - 2026	11
X	Operating Revenues and Expenditures, 2020 - 2026	12-18
Appendix A	Equipment, Rolling Stock and Facilities	20-23
Appendix B	Systems Map	25

## Section I: Organization

Pacific Transit System is a Public Transportation Benefit Area, authorized in Chapter 36.57A RCW, located in Pacific County, Washington. Pacific Transit System began providing public transportation services in January 1980. Our system map appears in the Appendix, showing the extent of our service area. Our eight-member Board of Directors consists of three Pacific County Commissioners, four mayors, one each from the following communities of Raymond, South Bend, Ilwaco, and Long Beach, plus a non-voting labor representative. The Board of Directors holds monthly public Board meetings the second Thursday of each month. The meetings alternate between the Commissioners Meeting Room in South Bend, Washington and the Pacific County Office Building in Long Beach, Washington. During the Covid Pandemic, the meetings were held virtually.

Below is the table of organization for Pacific Transit System.  
(As of August 1, 2021)



As of December 31, 2020 Pacific Transit System employed:

11.9 Full-time equivalents in the Operations Division (4.8 in DAR; 7.1 in FR)

2.0 Full-time equivalents in the Maintenance Division

4.5 Full-time equivalents in the Administration Division

## **Section II: Physical Plant**

Pacific Transit System has Administrative Offices and an Operation Facility located at 216 N. Second Street, Raymond, Washington 98577. In addition, Pacific Transit System has Maintenance and Operations Facility located at 2750 Pacific Way, Seaview, Washington, 98644.

The Appendix contains the completed form for the State's public transportation management system for our owned revenue vehicles and facilities.

## **Section III: Service Characteristics**

In 2020, Pacific Transit System provided fixed route and Dial-A-Ride accessible services. Pacific Transit System's map in the Appendix shows where fixed routes operate.

Pacific Transit System operates 5 fixed routes, Mondays through Fridays, 6:00 am - 7:30 pm, and two fixed routes on Saturdays, 10:00 am - 6 pm. The headway on all routes varied as displayed on our system map in the Appendix. Our Dial-A-Ride accessible services are available at the same times as our fixed route services.

Our fare structure, per boarding, is:

Fixed routes (#14, 24, or 50), age 5 years and above: \$0.50

Fixed routes (#20 or 32), age 5 years and above: \$0.35

Dial-A-Ride, 5 years and above including ADA: \$0.35

Children 4 and under ride free when accompanied by an adult.

Our charges for passes are:

\$7.00 for 20 \$0.35 rides, good on routes #20, 32 & DAR; age 5 years and up.

\$10.00 for 20 \$0.50 rides, good on routes #14, 24, & 50; age 5 years and up.

\$20.00 unlimited monthly pass, good on all routes including DAR; age 5-60 years.

\$10.00 unlimited Student monthly pass, good on all routes, for all students.

\$10.00 unlimited Reduced monthly pass, good on all routes, for seniors age 60 and older or for the disabled.

\$1.50 Daily transfer, good on all routes, for one day only. No age limit.

In addition, we have special fare free services for the following:

- Project Community Connect – 4<sup>th</sup> Tuesday & Thursday - January
- Timberland Regional Library Summer Reading Program - June thru August
- Ride Free Week - December

#### **Section IV: Service Connections**

Pacific Transit System provides services to the following public transportation facilities:

Grays Harbor Transit Transfer Facility in Aberdeen, Washington for further connections to Olympia, Washington and to Greyhound and Amtrak.

Sunset Transportation Services and Northwest Point Coachways in Astoria, Oregon for further connections to Portland, Oregon and to Greyhound, Amtrak and the Portland airport.

Wahkiakum on the Move in Naselle, Washington for further connections to Longview and Chehalis Washington; and Portland, Oregon.

#### **Section V: Activities in 2020**

In February 2020, Governor Inslee declared a State of Emergency in response to the Covid Pandemic. Pacific Transit's bus services were changed in response to the states closure of businesses and travel. On March 20<sup>th</sup>, we became fare free throughout our whole system. On April 8<sup>th</sup>, we canceled all service to Astoria and Aberdeen, the interconnection between north and south county, and some local runs. On June 29<sup>th</sup>, we extended service by bringing back three out of four Astoria runs, two out three Aberdeen runs, and the interconnection run. With a median age of 65 for our list of operators, we had two operators claiming Proclamation 20-46 High Risk Employees, resulting in continued run of the extended modified service through rest of 2020. Our maintenance personnel were kept busy in March and April building driver barriers and installing hand sanitizer dispensers on all buses for driver and public safety. Ridership saw a 40% decrease for the year due to the pandemic. Fare free has continued through 2020 with a possible return in June 2021.

In 2020 we addressed the Washington State Department of Transportation's transportation system policy goals through the following:

PRESERVATION: To maintain, preserve, and extend the life and utility of prior investments in transportation systems and services

We continued to maintain and preserve our equipment and facilities.

SAFETY: To provide for and improve the safety and security of transportation customers and the transportation system.

We had no reportable accidents in 2020.

MOBILITY: To improve the predictable movement of goods and people throughout Washington State.

We continue to work with the community, other agencies, and other providers in our area to provide an efficient and predictable service.

ENVIRONMENT: To enhance Washington's quality of life through transportation investments that promote energy conservation, enhance healthy communities, and protect the environment.

We continually strive to protect the environment and practice energy conservation.

STEWARDSHIP: To continuously improve the quality, effectiveness, and efficiency of the transportation system.

We constantly monitor our service for our citizens and continue to have one of the lowest costs per hour in the state.

## **Section VI: Proposed Action Strategies for 2021 - 2026**

The proposed changes in Section VI, below, are based on the Washington Transportation Plan's policy goals:

### Preservation:

Over the next 6 years we intend to replace three (3) Dial-A-Ride vans, five (5) 30' buses with one (1) 30' bus and four (4) Hydrogen fuel buses; Paint the Seaview Maintenance Facility; Repair asphalt at Seaview; replace maintenance shop lifts; and build a portable hydrogen fuel station at Seaview Facility.

### Safety:

Our safety record over the past several years has been one of the best in the WSTIP (Washington State Transit Insurance Pool) membership.

### Mobility:

We continue to operate our fixed routes and Dial-A-Ride services with one of the lowest costs per hour of operation. In addition, the citizens of Pacific County seem to be satisfied with the level of service we provide.

### Environment:

We continue to protect our environment and practice energy conservation with the resources we have available in our community.



Stewardship:

We continue to monitor our citizens through citizen feedback and provide training to our operators to improve our transit agency.

Expansion:

Sunday service in the Long Beach peninsula area.

## Section VII: Proposed Changes, 2021 - 2026

<u>2021</u>	<u>Preservation</u>	<u>Expansion</u>
Services:	Temp. Reduction 40% (COVID)	No change
Facilities:	No Change	No change
Equipment:	Replace (1) – DAR Van	No change
<u>2022</u>		
Services:	No change	No change
Facilities:	Replace lifts; asphalt repair	No change
Equipment:	Replace (1) 30' Bus	No change
<u>2023</u>		
Services:	No change	Sunday Service SV
Facilities:	Paint SV Bldg	No change
Equipment:	Replace (1) – DAR Van	No change
<u>2024</u>		
Services:	No change	No change
Facilities:	No Change	Portable Hydrogen Station
Equipment:	Replace (1) – DAR Van Replace (2) – Hydrogen Buses	No change
<u>2025</u>		
Services:	No change	No change
Facilities:	No change	No change
Equipment:	No change	No change
<u>2026</u>		
Services:	No change	No change
Facilities:	No change	No change
Equipment:	Replace (2) – Hydrogen Buses	No change

**Section VIII: Capital Improvement Program, 2021-2026**

(all figures are in thousands of dollars)

<b>Preservation</b>	<b>2021</b>	<b>2022</b>	<b>2023</b>	<b>2024</b>	<b>2025</b>	<b>2026</b>
Maintenance Equipment	\$0	\$45	\$0	\$0	\$0	\$0
Transit Service	\$0	\$0	\$0	\$0	\$0	\$0
Dial A Ride Vehicles	\$115	\$0	\$115	\$115	\$0	\$0
Transit Center	\$0	\$40	\$70	\$0	\$0	\$0
Transit Shelters	\$0	\$0	\$0	\$0	\$0	\$0
Transit Buses	\$0	\$550	\$0	\$2,600	\$0	\$2,600
<b>Totals</b>	<b>\$115</b>	<b>\$635</b>	<b>\$185</b>	<b>\$2,715</b>	<b>\$0</b>	<b>\$2,600</b>

**Expansion**

Maintenance Equipment	\$0	\$0	\$0	\$0	\$0	\$0
Transit Service	\$0	\$0	\$85	\$0	\$0	\$0
Dial A Ride Vehicles	\$0	\$0	\$0	\$0	\$0	\$0
Transit Center	\$0	\$0	\$0	\$250	\$0	\$0
Transit Shelters	\$0	\$0	\$0	\$0	\$0	\$0
Transit Buses	\$0	\$0	\$0	\$0	\$0	\$0
<b>Totals</b>	<b>\$0</b>	<b>\$0</b>	<b>\$85</b>	<b>\$250</b>	<b>\$0</b>	<b>\$0</b>

**Combined**

Maintenance Equipment	\$0	\$45	\$0	\$0	\$0	\$0
Transit Service	\$0	\$0	\$85	\$0	\$0	\$0
Dial A Ride Vehicles	\$115	\$0	\$115	\$115	\$0	\$0
Transit Center	\$0	\$40	\$70	\$250	\$0	\$0
Transit Shelters	\$0	\$0	\$0	\$0	\$0	\$0
Transit Buses	\$0	\$550	\$0	\$2,600	\$0	\$2,600
<b>Totals</b>	<b>\$115</b>	<b>\$635</b>	<b>\$270</b>	<b>\$2,965</b>	<b>\$0</b>	<b>\$2,600</b>

**Section IX: Operating Data 2020 - 2026**

(All Figures, except 2020, in thousands of units)

<b><u>Fixed Routes Services</u></b>	<b><u>2020</u></b>	<b><u>2021</u></b>	<b><u>2022</u></b>	<b><u>2023</u></b>	<b><u>2024</u></b>	<b><u>2025</u></b>	<b><u>2026</u></b>
Vehicle hours	11,076	13	13	13	13	13	13
Vehicle revenue hours	8,757	11.5	11.5	11.5	11.5	11.5	11.5
Vehicle miles	246,545	330	350	350	350	350	350
Vehicle revenue miles	244,016	325	330	330	330	330	330
Passenger trips	55,760	80	100	100	101	102	103
Fatalities	0						
Reportable injuries	0						
Collisions	1						
Diesel fuel consumed (gal)	30,551						
<b><u>Dial a Ride Services</u></b>	<b><u>2020</u></b>	<b><u>2021</u></b>	<b><u>2022</u></b>	<b><u>2023</u></b>	<b><u>2024</u></b>	<b><u>2025</u></b>	<b><u>2026</u></b>
Vehicle hours	7,953	8	8	8.5	8.5	9	9
Vehicle revenue hours	5,549	6	7	7	8	8.5	8.5
Vehicle miles	80,172	85	95	101	101	103	104
Vehicle revenue miles	70,848	72	87	92	92	95	96
Passenger trips	10,510	12	13	14.5	15	15	15
Fatalities	0						
Reportable injuries	0						
Collisions	0						
Gasoline fuel consumed (gal)	8,289						

**Section X: Operating Revenues and Expenditures, 2020-2026**

<b>2020</b>	<u>GENERAL FUND</u>	<u>CAPITAL FUND</u>	<u>TOTALS</u>
<b><u>Beginning Balance</u></b>			
Revenues	\$115,852	\$3,186,384	\$3,302,236
Sales Tax	\$1,115,703	\$0	\$1,115,703
Farebox	\$12,515	\$0	\$12,515
Sales Tax Equalization	\$111,816	\$0	\$111,816
Federal Operating grants	\$223,909	\$0	\$223,909
Cares Act	\$136,594	\$0	\$136,594
State Operating Grants	\$545,892	\$0	\$545,892
Other	\$29,295	\$0	\$29,295
Contributions to Accounts	\$0	\$0	\$0
Total Available	<u>\$2,291,576</u>	<u>\$3,186,384</u>	<u>\$5,477,960</u>
<b><u>Operating Expenses</u></b>			
Van Pool P&M	\$0	\$0	\$0
Vanpool Sys. Expand	\$0	\$0	\$0
Fixed Route P&M	\$1,131,950	\$0	\$1,131,950
Fixed Route Sys Expand	\$0	\$0	\$0
Route Deviation P&M	\$0	\$0	\$0
Route Deviation Sys Expand	\$0	\$0	\$0
Paratransit ADA P&M	\$636,722	\$0	\$636,722
Paratransit ADA Sys Expand	\$0	\$0	\$0
Annual Depreciation	\$325,680	\$0	\$325,680
Contributions to Accounts	\$0	\$0	\$0
<b>Total Expenses</b>	<u>\$2,094,352</u>	<u>\$0</u>	<u>\$2,094,352</u>
Add Back Depreciation	\$325,680	\$0	\$325,680
<b>Net Cash Available</b>	<u>\$522,904</u>	<u>\$3,186,384</u>	<u>\$3,709,288</u>
<b><u>Capital Revenue</u></b>			
5311 Grants	\$0	\$68,386	\$68,386
<b>Total Capital Revenue</b>	<u>\$0</u>	<u>\$68,386</u>	<u>\$68,386</u>
<b><u>Capital Obligations</u></b>			
Replace DAR Van	\$0	\$90,600	\$90,600
	\$0	\$0	\$0
<b>Total Capital Obligations</b>	<u>\$0</u>	<u>\$90,600</u>	<u>\$90,600</u>
Ending Cash Balance 12/31	\$522,904	\$3,164,170	\$3,687,074

**Section X: Operating Revenues and Expenditures, 2020-2026**

2021	<u>GENERAL FUND</u>	<u>CAPITAL FUND</u>	<u>TOTALS</u>
<b><u>Beginning Balance</u></b>	\$522,904	\$3,164,170	\$3,687,074
<b>Revenues</b>			
Sales Tax	\$1,000	\$0	\$1,000
Farebox	\$10	\$0	\$10
Sales Tax Equalization	\$200	\$0	\$200
Federal Operating grants	\$300	\$0	\$300
Cares Act	\$117	\$0	\$117
State Operating Grants	\$670	\$0	\$670
Other	\$24	\$0	\$24
Contributions to Accounts	\$0	\$0	\$0
<b>Total Available</b>	<u>\$525,225</u>	<u>\$3,164,170</u>	<u>\$3,689,395</u>
<b><u>Operating Expenses</u></b>			
Van Pool P&M	\$0	\$0	\$0
Vanpool Sys. Expand	\$0	\$0	\$0
Fixed Route P&M	\$1,242	\$0	\$1,242
Fixed Route Sys Expand	\$0	\$0	\$0
Route Deviation P&M	\$0	\$0	\$0
Route Deviation Sys Expand	\$0	\$0	\$0
Paratransit ADA P&M	\$828	\$0	\$828
Paratransit ADA Sys Expand	\$0	\$0	\$0
Annual Depreciation	\$320	\$0	\$320
Contributions to Accounts	\$0	\$0	\$0
<b>Total Expenses</b>	<u>\$2,390</u>	<u>\$0</u>	<u>\$2,390</u>
Add Back Depreciation	\$320	\$0	\$320
<b>Net Cash Available</b>	<u>\$523,155</u>	<u>\$3,164,170</u>	<u>\$3,687,325</u>
<b>Capital Revenue</b>			
5311 Grants	<u>\$0</u>	<u>\$82</u>	<u>\$82</u>
<b>Total Capital Revenue</b>	<u>\$0</u>	<u>\$82</u>	<u>\$82</u>
<b>Capital Obligations</b>			
Replace DAR Van	<u>\$0</u>	<u>\$115</u>	<u>\$115</u>
<b>Total Capital Obligations</b>	<u>\$0</u>	<u>\$115</u>	<u>\$115</u>
<b>Ending Cash Balance 12/31</b>	<u>\$523,155</u>	<u>\$3,164,137</u>	<u>\$3,687,292</u>

**Section X: Operating Revenues and Expenditures, 2020-2026**

<b>2022</b>	<b><u>GENERAL FUND</u></b>	<b><u>CAPITAL FUND</u></b>	<b><u>TOTALS</u></b>
<b><u>Beginning Balance</u></b>	\$523,155	\$3,164,137	\$3,687,292
<b>Revenues</b>			
Sales Tax	\$950	\$0	\$950
Farebox	\$40	\$0	\$40
Sales Tax Equalization	\$175	\$0	\$175
Federal Operating grants	\$300	\$0	\$300
Cares Act	\$75	\$0	\$75
State Operating Grants	\$540	\$0	\$540
Other	\$24	\$0	\$24
Contributions to Accounts	\$0	\$0	\$0
<b>Total Available</b>	<u>\$525,259</u>	<u>\$3,164,137</u>	<u>\$3,689,396</u>
<b><u>Operating Expenses</u></b>			
Van Pool P&M	\$0	\$0	\$0
Vanpool Sys. Expand	\$0	\$0	\$0
Fixed Route P&M	\$1,395	\$0	\$1,395
Fixed Route Sys Expand	\$0	\$0	\$0
Route Deviation P&M	\$0	\$0	\$0
Route Deviation Sys Expand	\$0	\$0	\$0
Paratransit ADA P&M	\$930	\$0	\$930
Paratransit ADA Sys Expand	\$0	\$0	\$0
Annual Depreciation	\$320	\$0	\$320
Contributions to Accounts	\$0	\$0	\$0
<b>Total Expenses</b>	<u>\$2,645</u>	<u>\$0</u>	<u>\$2,645</u>
Add Back Depreciation	\$320	\$0	\$320
<b>Net Cash Available</b>	<u>\$522,934</u>	<u>\$3,164,137</u>	<u>\$3,687,071</u>
<b>Capital Revenue</b>			
5311 Grants	\$0	\$440	\$440
<b>Total Capital Revenue</b>	<u>\$0</u>	<u>\$440</u>	<u>\$440</u>
<b>Capital Obligations</b>			
Maintenance Lifts		\$45	\$45
SV Asphalt Repair		\$40	\$40
30' Bus Replacement	\$0	\$550	\$550
<b>Total Capital Obligations</b>	<u>\$0</u>	<u>\$635</u>	<u>\$635</u>
<b>Ending Cash Balance 12/31</b>	\$522,934	\$3,163,942	\$3,686,876

**Section X: Operating Revenues and Expenditures, 2020-2026**

**2023**

	<u>GENERAL FUND</u>	<u>CAPITAL FUND</u>	<u>TOTALS</u>
<b><u>Beginning Balance</u></b>	\$522,934	\$3,163,942	\$3,686,876
<b>Revenues</b>			
Sales Tax	\$950	\$0	\$950
Farebox	\$47	\$0	\$47
Sales Tax Equalization	\$200	\$0	\$200
Federal Operating grants	\$500	\$0	\$500
Cares Act	\$38	\$0	\$38
State Operating Grants	\$650	\$0	\$650
Other	\$24	\$0	\$24
Contributions to Accounts	\$0	\$0	\$0
<b>Total Available</b>	<u>\$525,343</u>	<u>\$3,163,942</u>	<u>\$3,689,285</u>
<b><u>Operating Expenses</u></b>			
Van Pool P&M	\$0	\$0	\$0
Vanpool Sys. Expand	\$0	\$0	\$0
Fixed Route P&M	\$1,534	\$0	\$1,534
Route Deviation P&M	\$0	\$0	\$0
Route Deviation Sys Expand	\$0	\$0	\$0
Paratransit ADA P&M	\$1,023	\$0	\$1,023
Paratransit ADA Sys Expand	\$0	\$0	\$0
Annual Depreciation	\$325	\$0	\$325
Contributions to Accounts	\$0	\$0	\$0
<b>Total Expenses</b>	<u>\$2,882</u>	<u>\$0</u>	<u>\$2,882</u>
Add Back Depreciation	\$325	\$0	\$325
<b>Net Cash Available</b>	<u>\$522,786</u>	<u>\$3,163,942</u>	<u>\$3,686,728</u>
<b>Capital Revenue</b>			
5311 Grants		\$92	\$92
<b>Total Capital Revenue</b>		<u>\$92</u>	<u>\$92</u>
<b>Capital Obligations</b>			
Paint SV Bldg		\$70	\$70
Sunday Service		\$85	\$85
Replace DAR Van		\$115	\$115
<b>Total Capital Obligations</b>	<u>\$0</u>	<u>\$270</u>	<u>\$270</u>
<b>Ending Cash Balance 12/31</b>	\$522,786	\$3,163,764	\$3,686,550



**Section X: Operating Revenues and Expenditures, 2020-2026**

**2024**

	<u>GENERAL FUND</u>	<u>CAPITAL FUND</u>	<u>TOTALS</u>
<b><u>Beginning Balance</u></b>	\$522,786	\$3,163,764	\$3,686,550
<b>Revenues</b>			
Sales Tax	\$950	\$0	\$950
Farebox	\$48	\$0	\$48
Sales Tax Equalization	\$150	\$0	\$150
Federal Operating grants	\$500	\$0	\$500
Cares Act	\$0	\$0	\$0
State Operating Grants	\$550	\$0	\$550
Other	\$24	\$0	\$24
Contributions to Accounts	\$0	\$0	\$0
<b>Total Available</b>	<u>\$525,008</u>	<u>\$3,163,764</u>	<u>\$3,688,772</u>
<b><u>Operating Expenses</u></b>			
Van Pool P&M	\$0	\$0	\$0
Vanpool Sys. Expand	\$0	\$0	\$0
Fixed Route P&M	\$1,626	\$0	\$1,626
Fixed Route Sys Expand	\$0	\$0	\$0
Route Deviation P&M	\$0	\$0	\$0
Route Deviation Sys Expand	\$0	\$0	\$0
Paratransit ADA P&M	\$1,084	\$0	\$1,084
Paratransit ADA Sys Expand	\$0	\$0	\$0
Annual Depreciation	\$325	\$0	\$325
Contributions to Accounts	\$0	\$0	\$0
<b>Total Expenses</b>	<u>\$3,035</u>	<u>\$0</u>	<u>\$3,035</u>
Add Back Depreciation	\$325	\$0	\$325
<b>Net Cash Available</b>	<u>\$522,298</u>	<u>\$3,163,764</u>	<u>\$3,686,062</u>
<b>Capital Revenue</b>			
5311 Grants		\$2,657	\$2,657
<b>Total Capital Revenue</b>		<u>\$2,657</u>	<u>\$2,657</u>
<b>Capital Obligations</b>			
Hydrogen Fuel Station		\$250	\$250
Replace w/2 hydrogen bus		\$2,600	\$2,600
Replace DAR Van		\$115	\$115
<b>Total Capital Obligations</b>		<u>\$2,965</u>	<u>\$2,965</u>
<b>Ending Cash Balance 12/31</b>	\$522,298	\$3,163,456	\$3,685,754

**Section X: Operating Revenues and Expenditures, 2020-2026**

2025	GENERAL FUND	CAPITAL FUND	TOTALS
<b><u>Beginning Balance</u></b>	\$522,298	\$3,163,456	\$3,685,754
<b>Revenues</b>			
Sales Tax	\$950	\$0	\$950
Farebox	\$48	\$0	\$48
Sales Tax Equalization	\$200	\$0	\$200
Federal Operating grants	\$600	\$0	\$600
Cares Act	\$0	\$0	\$0
State Operating Grants	\$675	\$0	\$675
Other	\$22	\$0	\$22
Contributions to Accounts	\$0	\$0	\$0
<b>Total Available</b>	<u>\$524,793</u>	<u>\$3,163,456</u>	<u>\$3,688,249</u>
<b><u>Operating Expenses</u></b>			
Van Pool P&M	\$0	\$0	\$0
Vanpool Sys. Expand	\$0	\$0	\$0
Fixed Route P&M	\$1,707	\$0	\$1,707
Fixed Route Sys Expand	\$0	\$0	\$0
Route Deviation P&M	\$0	\$0	\$0
Route Deviation Sys Expand	\$0	\$0	\$0
Paratransit ADA P&M	\$1,138	\$0	\$1,138
Paratransit ADA Sys Expand	\$0	\$0	\$0
Annual Depreciation	\$350	\$0	\$350
Contributions to Accounts	\$0	\$0	\$0
<b>Total Expenses</b>	<u>\$3,195</u>	<u>\$0</u>	<u>\$3,195</u>
Add Back Depreciation	\$350	\$0	\$350
<b>Net Cash Available</b>	<u>\$521,948</u>	<u>\$3,163,456</u>	<u>\$3,685,404</u>
<b>Capital Revenue</b>			
5311 Grants	\$0	\$0	\$0
<b>Total Capital Revenue</b>	<u>\$0</u>	<u>\$0</u>	<u>\$0</u>
<b>Capital Obligations</b>			
Replace w	\$0	\$0	\$0
<b>Total Capital Obligations</b>	<u>\$0</u>	<u>\$0</u>	<u>\$0</u>
<b>Ending Cash Balance 12/31</b>	\$521,948	\$3,163,456	\$3,685,404

**Section X: Operating Revenues and Expenditures, 2020-2026**

<b>2026</b>	<b>GENERAL FUND</b>	<b>CAPITAL FUND</b>	<b>TOTALS</b>
<b><u>Beginning Balance</u></b>	\$521,948	\$3,163,456	\$3,685,404
<b>Revenues</b>			
Sales Tax	\$100	\$0	\$100
Farebox	\$48	\$0	\$48
Sales Tax Equalization	\$150	\$0	\$150
Federal Operating grants	\$675	\$0	\$675
Cares Act	\$0	\$0	\$0
State Operating Grants	\$400	\$0	\$400
Other	\$22	\$0	\$22
Contributions to Accounts	\$0	\$0	\$0
<b>Total Available</b>	<u>\$523,343</u>	<u>\$3,163,456</u>	<u>\$3,686,799</u>
<b><u>Operating Expenses</u></b>			
Van Pool P&M	\$0	\$0	\$0
Vanpool Sys. Expand	\$0	\$0	\$0
Fixed Route P&M	\$1,793	\$0	\$1,793
Fixed Route Sys Expand	\$0	\$0	\$0
Route Deviation P&M	\$0	\$0	\$0
Route Deviation Sys Expand	\$0	\$0	\$0
Paratransit ADA P&M	\$1,190	\$0	\$1,190
Paratransit ADA Sys Expand	\$0	\$0	\$0
Annual Depreciation	\$350	\$0	\$350
Contributions to Accounts	\$0	\$0	\$0
<b>Total Expenses</b>	<u>\$3,333</u>	<u>\$0</u>	<u>\$3,333</u>
Add Back Depreciation	\$350	\$0	\$350
<b>Net Cash Available</b>	<u>\$520,360</u>	<u>\$3,163,456</u>	<u>\$3,683,816</u>
<b>Capital Revenue</b>			
5311 Grants		\$2,340	\$2,340
<b>Total Capital Revenue</b>		<u>\$2,340</u>	<u>\$2,340</u>
<b>Capital Obligations</b>			
Replace w/2 hydrogen buses		\$2,600	\$2,600
<b>Total Capital Obligations</b>		<u>\$2,600</u>	<u>\$2,600</u>
<b>Ending Cash Balance 12/31</b>	\$520,360	\$3,163,196	\$3,683,556

## **Lists of Equipment, Rolling Stock and Facilities**

(As of July 7, 2021)

The Public Transportation Management System lists the rolling stock, equipment, and facilities owned by Pacific Transit System.

# **APPENDIX A**

Rolling Stock Inventory

Owned Equipment Inventory

Facilities Inventory

**Public Transportation Management System  
Owned Rolling Stock Inventory**

**Agency/Organization:**

Pacific Transil System

**Date:**

7-Jul-21

I hereby certify that all information reported in this inventory reflects true, accurate and complete information for the agency/organization listed.

*Michael W. Dwyer*  
Signature and Title

*8/5/21*  
Date

Year/Make/Model	Vehicle Code	Vehicle Identification Number (VIN)	Agency Vehicle Number	Current Odometer	Condition (points)	Age (years)	Remaining Useful Life (years)	Replacement Cost \$	ADA Access (yes/no)	Seating Capacity	Fuel Type	WSDOT Title (yes/no)
2000/Gillig/Phantom	3	15GCA2110Y1110252	D-27	511,623	20-40	21	3	\$460,000	YES	29/23-2	D	NO
2011 Gillig Low Floor	3	15GGE2716B1092148	D-29	384,112	80-90	10	3	\$460,000	YES	26/20-2	D	NO
2011 Gillig Low Floor	3	15GGE2718B1092149	D-30	362,910	80-90	10	5	\$460,000	YES	26/20-2	D	NO
2011 Gillig Low Floor	3	15CCGE2714B1092150	D-31	399,200	80-90	10	5	\$460,000	YES	26/20-2	D	NO
2011 Gillig Low Floor	3	15CCGE2716B1092151	D-32	384,381	80-90	10	5	\$460,000	YES	26/20-2	D	NO
2011 Gillig Low Floor	3	15GGE2710B1092274	D-33	368,569	80-90	10	5	\$460,000	YES	26/20-2	D	NO
2011 Gillig Low Floor	3	15GGE2712B1092275	D-34	390,549	80-90	10	5	\$460,000	YES	26/20-2	D	NO
2019 Gillig Low Floor	3	15GGE2711K3093468	D-35	97,412	100	2	14	\$460,000	YES	26/20-2	D	YES
2019 Gillig Low Floor	3	15GGE2713K3093469	D-36	93,205	100	2	14	\$460,000	YES	26/20-2	D	YES
2018/Eldorado Elite 320	12	1FDAF5GT1JDA02233	D-37	106,567	100	3	12	\$220,000	YES	29/23-2	D	YES
2012/Eldorado/Aerotech 240	11	1GB6G5BG3C1198931	G-12	191,417	50-70	9	1	\$92,000	YES	14-2	G	NO
2012/Eldorado/Aerotech 240	11	1GBG5BG7C1199354	G-14	143,488	50-70	9	1	\$92,000	YES	14-2	G	NO
2015/Eldorado/Aerotech 240	11	1GB6G5BG2F1283943	G-15	78,595	80-90	6	4	\$92,000	YES	14-2	G	YES
2018/Eldorado/Aerotech 240	11	1HA6GVBC8JN007226	G-16	52,306	100	3	7	\$92,000	YES	14-2	G	YES
2018/Eldorado/Aerotech 240	11	1HA6GVBC3JN007389	G-17	45,386	100	3	7	\$92,000	YES	14-2	G	YES
2019/Eldorado/Aerotech 240	11	1FD1E4FSXXKDC65320	G-18	12,684	100	1	10	\$92,000	YES	14-2	G	YES

**Public Transportation Management System  
Owned Equipment Inventory**

**Agency/Organization:** Pacific Transit System

**Date:** July 7, 2021

	<b>Equipment Code and Description</b>	<b>Condition (points)</b>	<b>Age (years)</b>	<b>Remaining Useful Life (years)</b>	<b>Replacement Cost (\$)</b>	<b>Comments <i>(if more than two lines, please attach a separate comment page)</i></b>
1.	None					
2.						
3.						
4.						
5.						
6.						
7.						
8.						
9.						
10.						
11.						
12.						
13.						
14.						
15.						
16.						

**Public Transportation Management System  
Owned Facility Inventory**

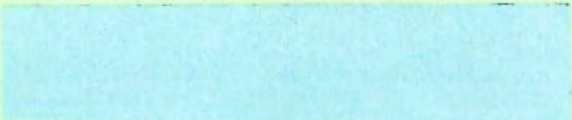
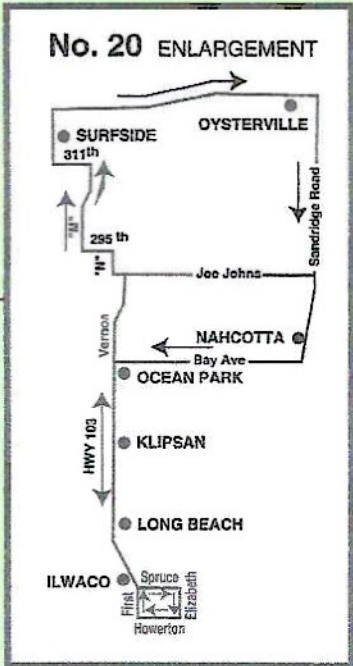
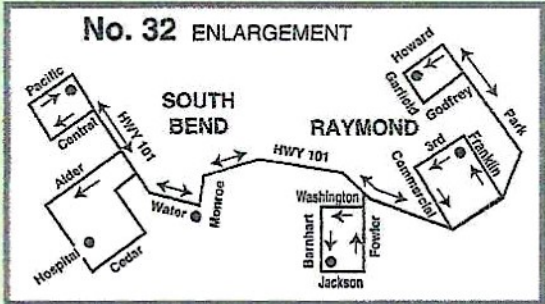
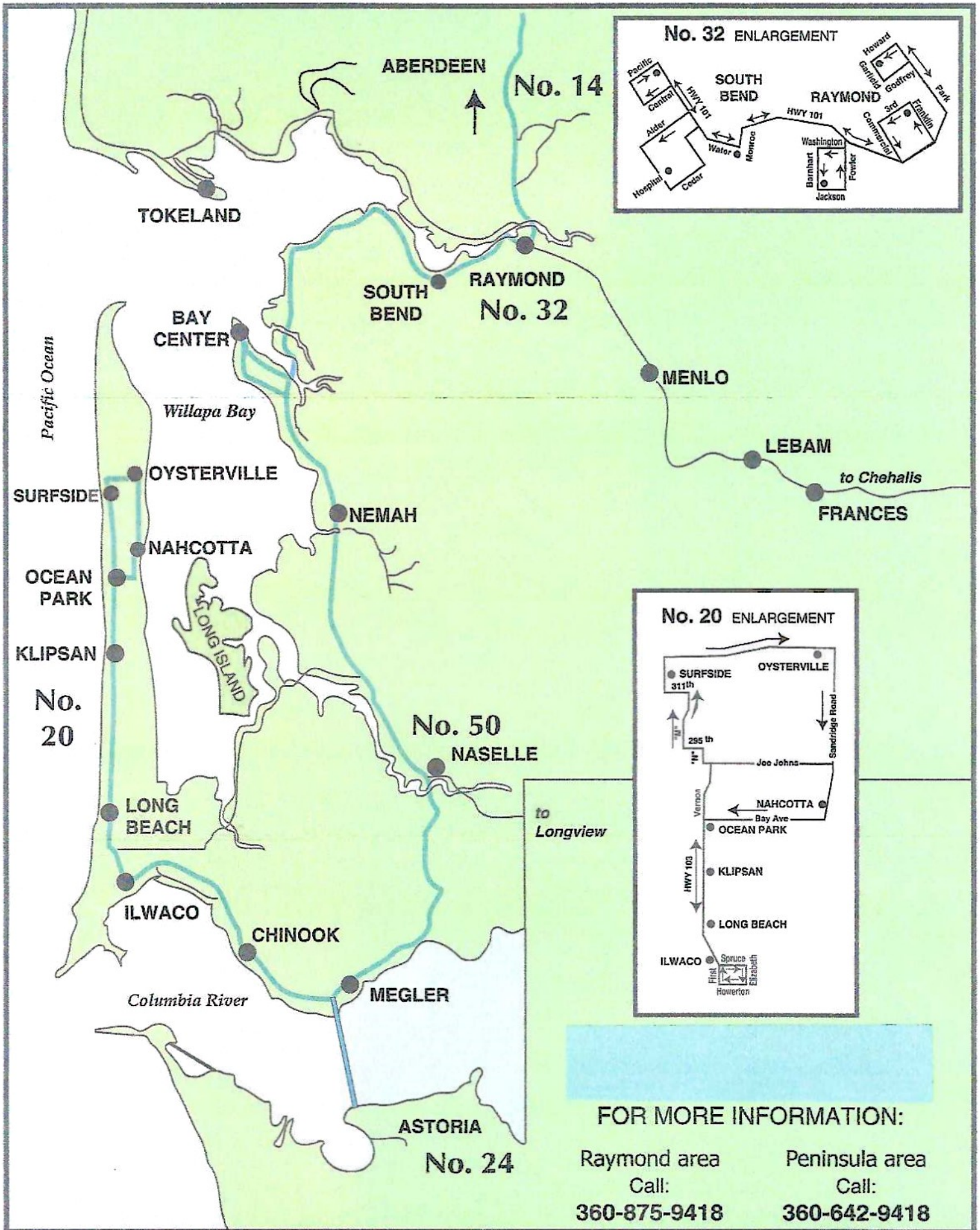
**Agency/Organization:** Pacific Transit System  
**Date:** 7-Jul-21

	<b>Facility Code</b>	<b>Facility Name</b>	<b>Condition</b> (points)	<b>Age</b> (years)	<b>Remaining Useful Life</b> (years)	<b>Replacement Cost (\$)</b>	<b>Comments</b> <i>(If more than two lines, please attach a separate comment page)</i>
1.	10	Raymond Office - 1954	40	66	8	\$595,000	
2.	20	Raymond Parking Garage - 1982	40	38	8	\$275,000	
3.	11	Seaview Maintenance Facility - 1988	70	32	16	\$1,100,000	
4.	21	Seaview Wash & Fuel Bay - 1988	70	32	15	\$420,000	
5.	20	Seaview Parking Area - 1990	80	30	15	\$280,000	
6.	10	Seaview Office Area - 1990	80	30	15	\$595,000	
7.							
8.							
9.							
10.							
11.							
12.							
13.							
14.							
15.							
16.							



# **APPENDIX B**

## System Map



**FOR MORE INFORMATION:**

Raymond area  
Call:  
**360-875-9418**

Peninsula area  
Call:  
**360-642-9418**

