

## SurvCE - Importing LandXML Vertical Alignments

This process imports vertical alignment data from a LandXML file into the SurvCE application as a profile.

Always verify the imported vertical alignment geometry in the Profile Editor.

### **Basic Workflow**

Create the LandXML file and copy it to a folder on the collector. Then import vertical alignment data into a SurvCE Profile (\*.PRO) file.

### **Create LandXML File**

See the [“InRoads – Exporting Geometry \(Cogo Points, Horizontal and Vertical Alignments\) to LandXML File”](#) tech note.

### **Copy LandXML File to Collector**

Use Active Sync to transfer the LandXML file to a folder on the collector.

### **Load Vertical Alignment from LandXML File to SurvCE**

1. In the SurvCE software, select **Roads > Utilities**.
2. Select **Profile Conversion**.

The Import/Export Profile dialog opens.

3. Set *Conversion Type* to **LandXML**.
4. Under LandXML File (\*.xml), click **Existing File**.

The *Open LandXML File* dialog opens.

5. Browse to appropriate folder and select the LandXML file.
6. Under PRO File (\*.PRO), click **New File**.

The *Save PRO File* dialog opens.

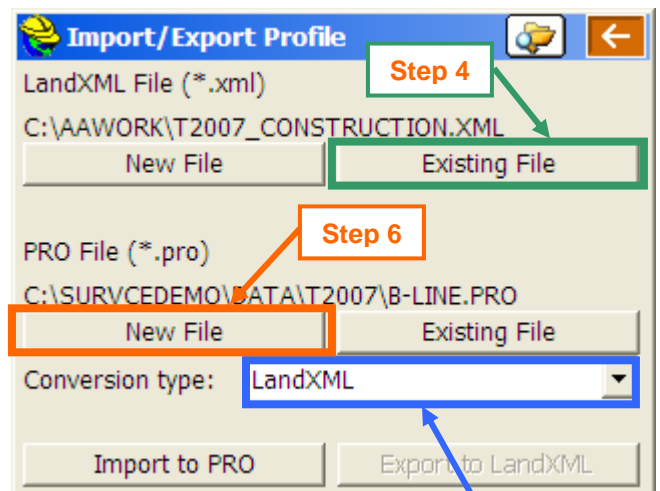
7. Browse to appropriate folder and Key in a new file name.
8. Click the **Green Check** button.

The *Save PRO File* dialog closes.

9. Click **Import to PRO**.

The *Select LandXML Alignment* dialog opens.

10. Select the vertical alignment to import.





After the file is imported a “*Process Done*” prompt appears near the bottom of the *Import/Export Centerline* dialog.

For questions or comments on this tech note, contact your regional CAE Support Coordinator