

SurvCE - Importing Land XML Cogo Points to SurvCE

Version: XM

This process imports COGO point data from a LandXML file into the SurvCE application.

Basic Workflow

Create the LandXML file and copy it to a folder on the collector. Then, import COGO points into a SurvCE Job (*.crd) file.

Create LandXML File

See the [“InRoads – Exporting Geometry \(Cogo Points, Horizontal and Vertical Alignments\) to LandXML File”](#) tech note.

Copy LandXML File to Collector

Use Active Sync to transfer the LandXML file to a folder on the collector.

Load CRD File from LandXML File

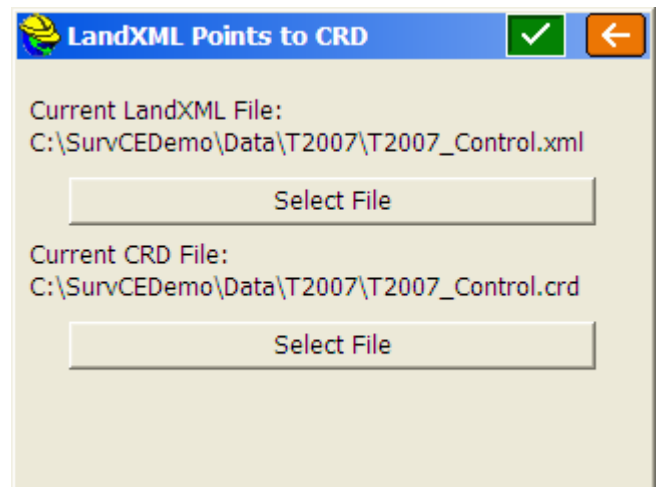
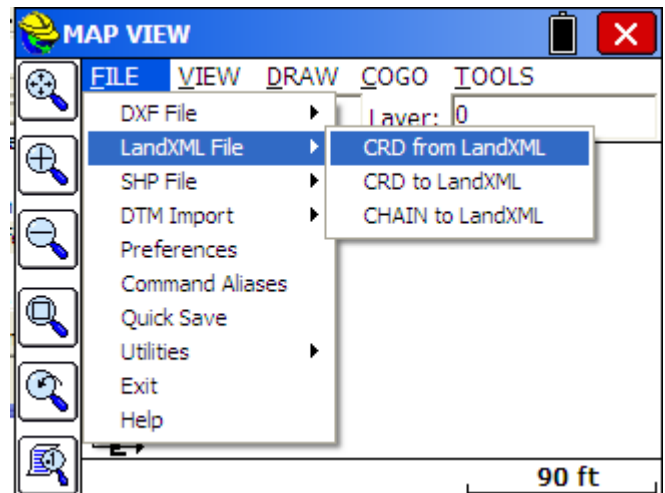
1. Verify the CRD (SurvCE Job) is NOT the active job.

SurvCE is not able to import points from a LandXML file to an active job.

2. Select the **Map View**.
3. Select **File > LandXML > CRD from LandXML**.

The *LandXML Points to CRD* dialog opens.

4. Under Current LandXML File, click **Select File**.
5. Browse to appropriate folder and select the LandXML file.
6. Under *Current CRD File*, click **Select File**.
7. Click the **Green Check** button at the top of the screen to import points.
8. Always verify the points were imported with List Points.





For questions or comments on this tech note, contact your regional CAE Support Coordinator