



## Leica - Quick Start Guide for TPS TCA1800 (Remote)

### **Overview**

This procedure will help set up the Leica TPS TC1800 instrument in Direct mode for use with the SurvCE data collector software.

### **On the Instrument**

Communication Settings (19200,8,None,1)



1. Turn on the instrument
2. Level the instrument
3. Select F3 - Soft Key "CONF"
4. Select menu item 4 - "GeoCOM communication param."
5. Highlight "Baud rate"
6. Select F6 - Soft Key "LIST"
7. Highlight "19200"
8. Press the enter key to accept
9. Verify that the "Protocol" is "GeoCOM"
10. Highlight "Parity"
11. Select F6 - Soft Key "LIST"
12. Highlight "NO"

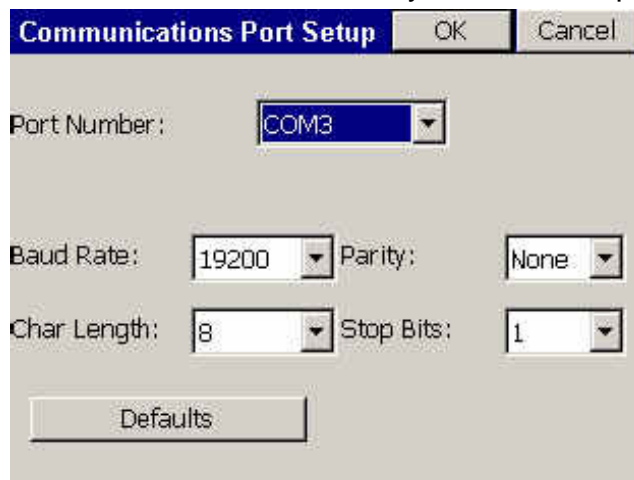


13. Press the enter key to accept
14. Verify the "Terminator" is "CR LF"
15. Highlight "Data bits"
16. Select F6 - Soft Key "LIST"
17. Highlight "8"
18. Press the enter key to accept
19. Verify "Stop bit" is 1
20. Select the "CONT" button to set parameters
21. Select F1 - Soft Key "EXTRA"
22. Select menu item 1 - "On-Line mode <GeoCOM>"
23. Select F5 - Soft Key "YES"

### ***In SurvCE***

24. In SurvCE, select the "Leica Robotic Instrument" driver from "Equip .. Instrument"
25. Instrument"
26. Verify the SurvCE communication settings by selecting "Equip .. Comm Setup"

(This only needs to be set the first time you use this equipment)



27. Set "Equip .. Settings" as shown below:



Leica Robotic Settings    OK    Cancel

Read Method:    Fast

Foresight Prism Offset (mm):    (360)(23.1)

Backsight Prism Offset (mm):    Circle(1.0)

Power Search Enabled

Laser Pointer

Work Area    Work Area/Search Settings

28. Select the “OK” button

For questions or comments on this tech note, contact HQ CAE Survey or your regional CAE Support Coordinator