



CAiCE - Importing Data from MicroStation

Only Photogrammetry compiled MicroStation data has the attribute tags that automate the translation process. Other MicroStation files are translated using tables that map the different symbologies found in the MicroStation data to the feature code and attributes the data should have in CAiCE.

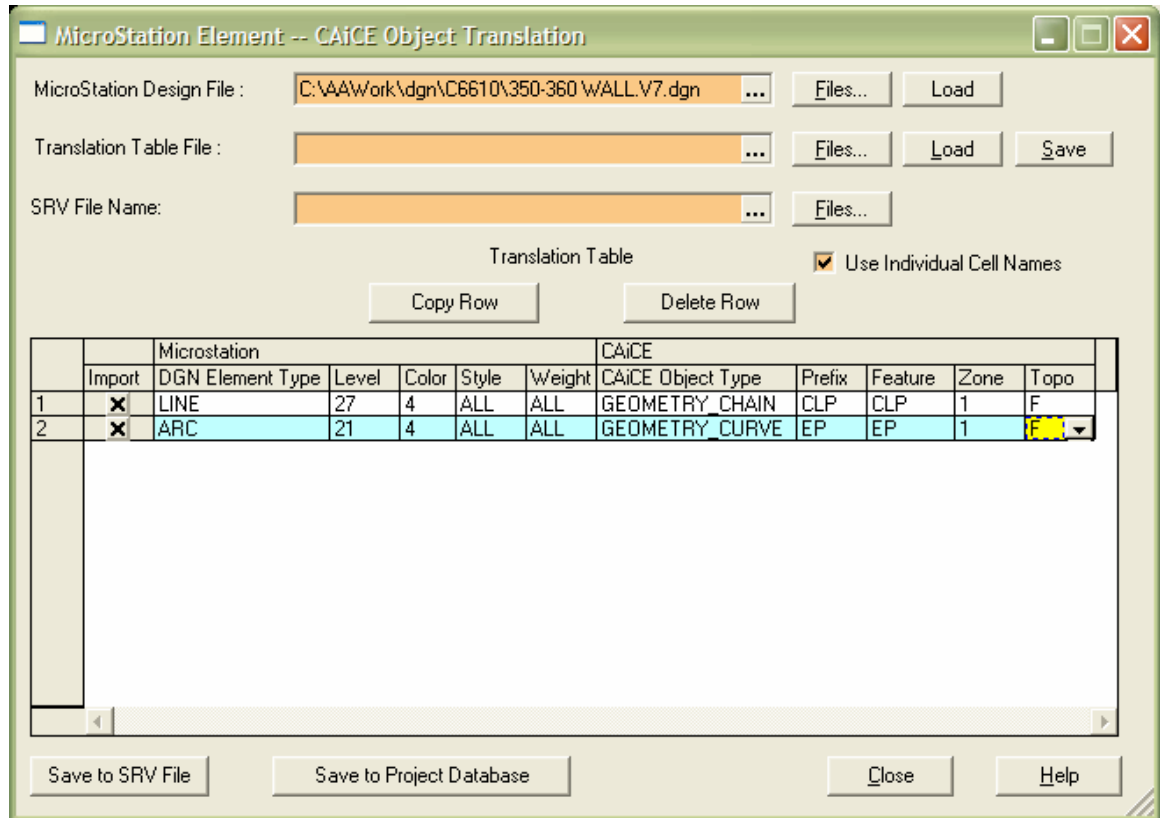
Importing DGN elements into a CAiCE project:

1. Copy the design file to the CAiCE project directory into which it is being imported. This step is optional, but it makes the import process much easier since the project directory is where CAiCE looks by default for DGN files to be imported.
2. Open CAiCE and activate the project that you want to import the data into.
3. Select **File => Import Translators => From Intergraph/MicroStation => DGN File To Geometry Elements**.
4. Click on the **FILES** button next the MicroStation Design File field and select the first DGN file to be imported.
5. If you have previously created a translation table (see steps 6 & 7), select it by entering its name or by clicking on the **FILES** button next to that field. If you haven't already created a translation table, you must define the translation parameters in the spreadsheet area of the dialog box. This process is described in steps 6 & 7.
6. Define the translation parameters. A jump start to this process is to click on the **LOAD** button next to the MicroStation Design Field. This button reads the .DGN file to be imported and creates an entry for each type of element found in the MicroStation file. From these standard entries, you can make copies and modifications that will define all the transfer parameters for your particular case. Basically each row defines the transfer of one set of MicroStation elements. Each set is defined by the MicroStation Type, Level, Color, Style and Weight. For instance if all yellow lines on level 27 should be imported as centerlines, modify a row so that it has LINE for its DGN element type, its level is 27 and its color is yellow (4). Also define the characteristics you want the imported elements to have in CAiCE by making selections in the CAiCE Object Type, Prefix, Feature, Zone and Topo columns. If there are additional line elements to be translated, highlight the row you just modified and click on the **COPY ROW** button. A new line will be inserted into the table. Continue modifying and adding to the table until all the elements that are to be translated are defined.

The table below is an example that imports all lines from level 27 that are color 4 as geometry chains, with a prefix of CLP and a feature of CLP. It also imports arcs from level 21 color 4 as geometry curves with prefix and feature codes of EP. All elements will be imported to Zone 1 as Feature



attribute.



7. If you will be translating other files with the same parameters, save the translation table by clicking on the **SAVE** button and specifying a name for the file. The next time a translation is done with those same parameters, the file can be selected and the spreadsheet will be filled in automatically.
8. Click on the on either the **Save SRV** or the **LOAD DATABASE** button to perform the translation to either a SRV file or directly into the project database.

For questions or comments on this tech note, contact your regional CAE Support Coordinator.