

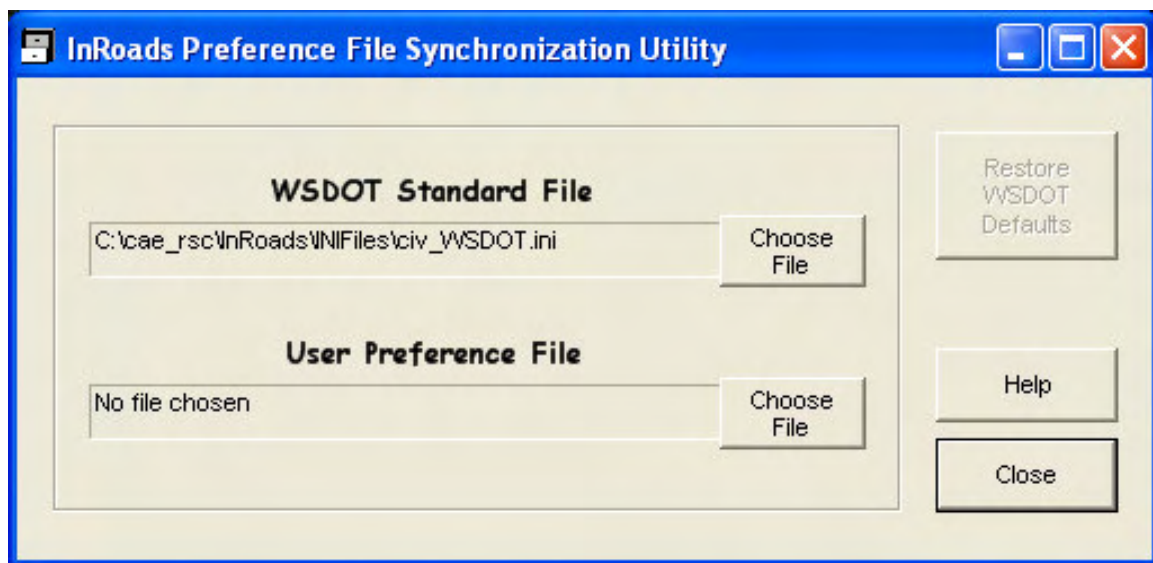


InRoads - Preference File Synchronization Utility

Overview

The *InRoads Preference File Synchronization* (IPFSync) utility allows users to update their project specific InRoads resource files with the current WSDOT standard versions while preserving user defined preferences and filters.

WSDOT InRoads version 8.5 files that can be synchronized are Civ_WSDOT.ini, Geo_WSDOT.ini, Survey_WSDOT.fwf, and Survey_pref_WSDOT.fxp.



Commands:

WSDOT Standard File: Choose File

Select the source file to copy preferences from

User Preference File

Select the destination file to copy preferences to

Restore WSDOT Defaults

Initiates restoration of WSDOT portion of preference file



Basic Workflow:

Choose File

The upper button allows the user to pick the WSDOT standard file (found in C:\CAE_rsc\InRoads\INIFiles) from which the default styles, preferences, etc. will be copied.

The lower button allows the user to choose a user resource file to which the defaults will be copied. Clicking them will bring up a File Open or Save Dialog, where user can navigate to the file or pick a different file type by clicking on the Files of Type drop down list.

Restore WSDOT Defaults

Once the files are chosen, click on this button to start the restoration process.

The macro will check to make sure the file types match, including checks to ensure that *.ini files are both of type civ or both geo. It determines this by checking the second line to make sure the last three letters match. Valid 2nd line codes are:

Standard file:	User file:
;SCIV	;UCIV
;SGEO	;UGEO
;SFWF	;USFWF
;SFXP	;USFXP

last line of the standard preference file should read:

;BEGIN USER PREFERENCES

The user file is backed up in case there are any processing errors. After processing, the macro displays a message to notify the user that the restoration was complete or, if necessary, that there were errors.

For questions or comments on this help file, contact your regional CAE Support Coordinator.