

OPTIONAL FLARED INSTALLATION
25:1 maximum flare rate

End payment for installation

TRAFFIC

PLAN

ELEVATION

POST #1 CONNECTION DETAIL

IMPACT HEAD CONNECTION DETAIL

WASHINGTON STATE
DEPARTMENT OF TRANSPORTATION

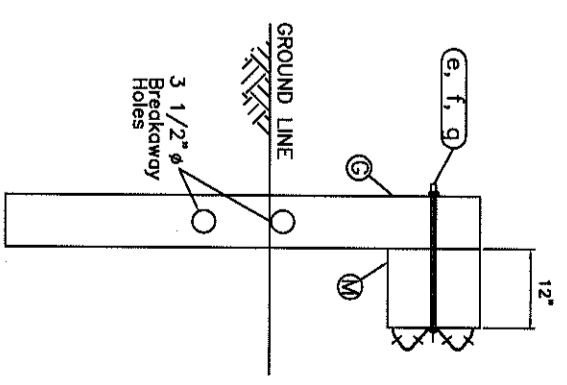
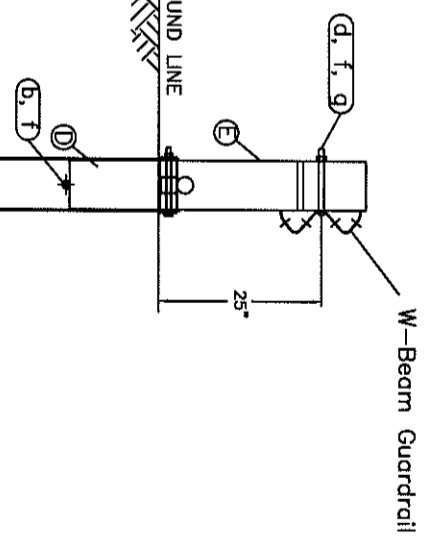
Approved
 Approved with revision
 Rejected

BY: R. Suckman
DATE: 12/4/06

GENERAL NOTES:

1. Breakaway posts are required with the SKT.
2. All bolts, nuts, cable assemblies, cable anchors and bearing plates shall be galvanized.
3. The SKT can be flared at a rate of up to 25:1 to prevent the impact head from encroaching on the shoulder.
4. The foundation tubes shall not protrude more than 4" above the ground (measured along a 5' cord). Site grading may be necessary to meet this requirement.
5. When rock is encountered, a 12" Ø post hole, 20" into the rock surface may be used if approved by the engineer. Granular material will be placed in the bottom of the hole, approximately 2.5' deep to provide drainage. The first two posts can be field cut to length, placed in the hole and backfilled with adequately compacted material excavated from the hole.
6. The breakaway cable assembly must be taut. A locking device (vice grips or channel lock pliers) should be used to prevent the cable from twisting when tightening nuts.
7. A site evaluation should be considered if there is less than 25' between the outlet side of the terminal and any adjacent driving lane.
8. The soil tubes may be driven with an approved driving head. They shall not be driven with the post in the tube.
9. The wood blockouts should be "loose-nailed" to the rectangular wood posts to prevent them from turning when the wood shrinks.

ITEM	QTY	BILL OF MATERIALS	ITEM NO.
A	1	IMPACT HEAD	S3000
B	1	W-BEAM GUARDRAIL END SECTION, 12 Ga.	S1303 MGS
C	3	W-BEAM GUARDRAIL, 12 Ga.	G1203 MGS
D	2	FOUNDATION TUBE	E731
E	2	BCT WOOD POST	P650 MGS
F	1	GROUND STRUT	E780
G	6	CRT WOOD POST	P671 MGS
H	1	BEARING PLATE	E750
J	1	PIPE SLEEVE	E740
K	1	CABLE ANCHOR BOX	S760
L	1	BCT CABLE ANCHOR ASSEMBLY	E770
M	6	MGS TIMBER BLOCKOUT OR EQUIV.	P618
HARDWARE (ALL DIMENSIONS IN INCHES)			
a	24	5/8" x 1 1/4" SPLICE BOLT	B580122
b	2	5/8" x 7 1/2" HEX BOLT	B580754
c	2	5/8" x 10" HEX BOLT	B581004
d	1	5/8" x 10" H.G.R. BOLT	B581002
e	6	5/8" x 22" H.G.R. BOLT	B582202
f	35	5/8" H.G.R. NUT	N050
g	7	H.G.R. WASHER	W050
h	2	1 ANCHOR CABLE HEX NUT	N100
i	2	1 ANCHOR CABLE WASHER	W100
k	2	3/8" x 3 LAG SCREW	E350
m	8	CABLE ANCHOR BOX SHOULDER BOLT	SB58A
n	8	1/2" A325 STRUCTURAL NUT	N055A
o	16	1 1/16" OD x 9/16" ID A325 STR. WASHER	W050A



SECTION A-A
Post #2

SECTION B-B
Posts 3 thru 8

RSTF
Road Systems, Inc.
Big Spring, TX
Phone: 409-269-2435
or Phone: 530-360-0721

Sequential Kinking Terminal
SKT - Assembly
Midwest Guardrail System
Wood Post System

Sheet: **A1**
Date: **12/01/04**
By: **JRR**
Rev: **0**

Drawing Name: **SKT-MGS-W-US** Scale: **NONE**