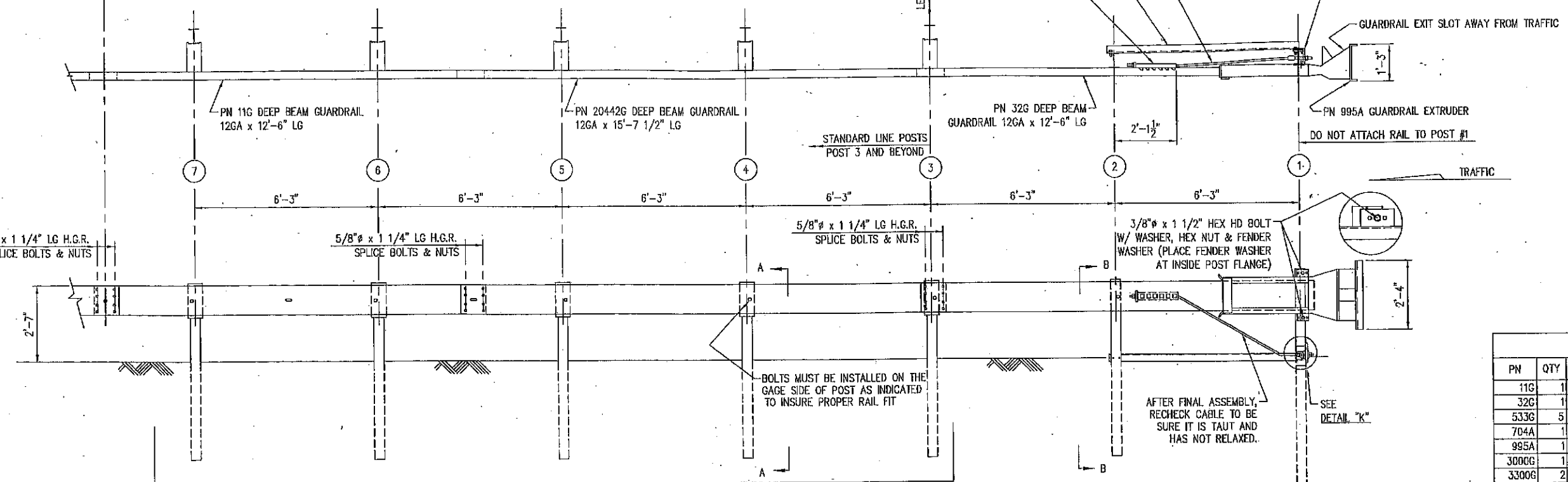


NOTE:
 INSTALL RAIL PARALLEL TO ROADWAY EDGE LINE.
 WHEN FLARE IS REQUIRED BY DESIGN ENGINEER, A
 25:1 FLARE RATE, OR FLATTER, OVER THE LENGTH OF
 SYSTEM IS ALLOWABLE.

CONTINUE WITH A MINIMUM OF 6'-3" SINGLE PLY
 W-BEAM 12GA RAILING. W-BEAM WITH RUB RAIL,
 NESTED W-BEAM, NESTED THRIE BEAM, SINGLE PLY
 THRIE BEAM AND THRIE BEAM TRANSITION SECTIONS
 ARE NOT PERMITTED WITHIN 6'-3" FROM END OF
 THE SYSTEM LENGTH.

SYSTEM LENGTH = 40'-7 1/2"



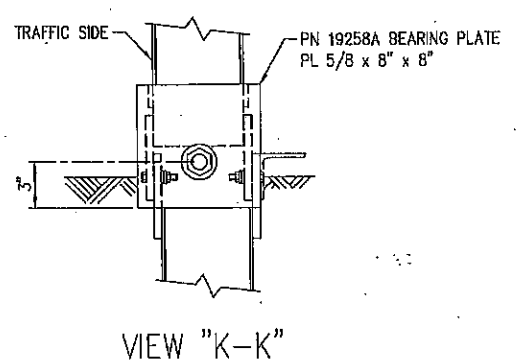
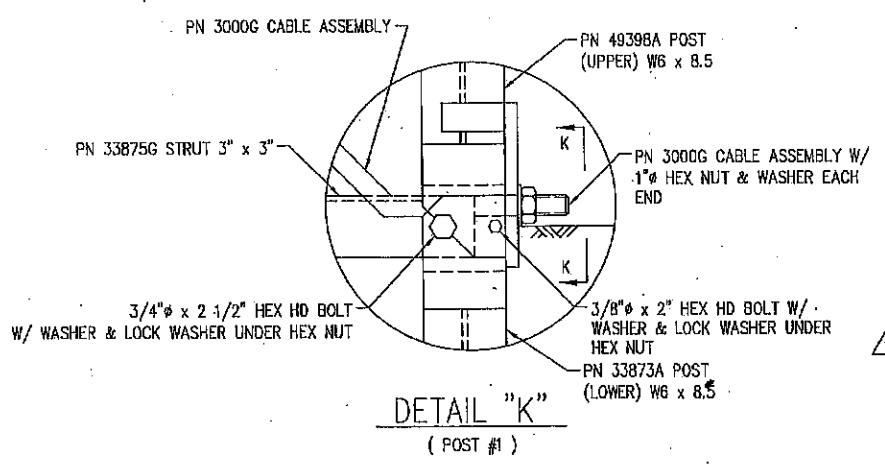
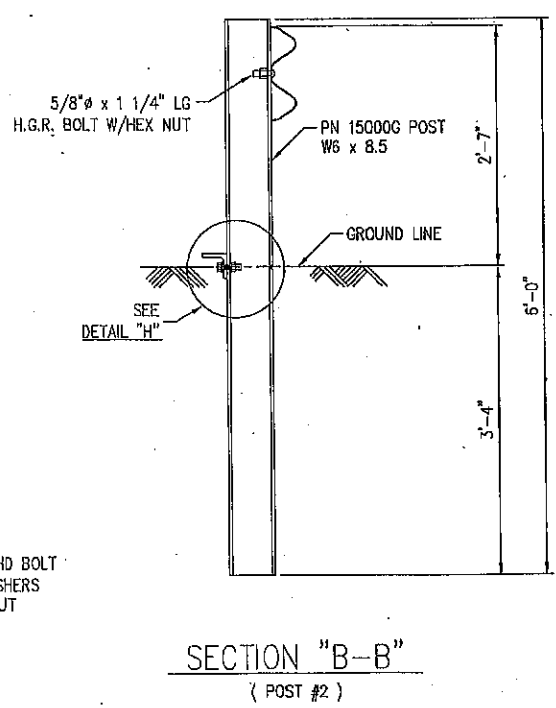
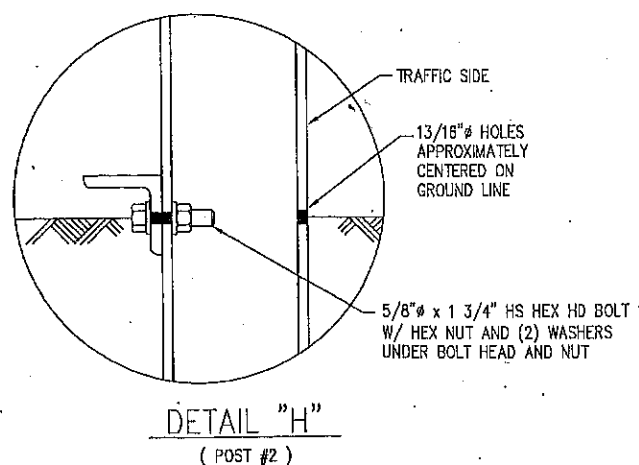
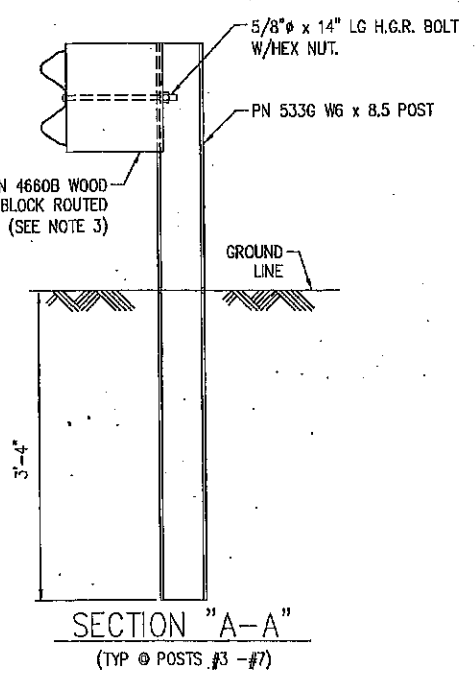
BILL OF MATERIAL		
PN	QTY	DESCRIPTION
110G	1	12/12-6/3'-1.5"/S ANC (GUARDRAIL)
320G	1	12/12-6/6'3/S ANC (GUARDRAIL)
533G	5	LINE POST #3-#7
704A	1	CABLE ANCHOR BRACKET
995A	1	ET-PLUS EXTRUDER
3000G	1	CABLE 3/4 x 8'6"
3300G	2	5/8" FLAT WASHER
3340G	31	5/8" HEX NUT
3360G	25	5/8" x 1 1/4" SPLICE BOLT
3391G	1	5/8" x 1 3/4" HEX HD BOLT (A325)
3540G	5	5/8" x 14" POST BOLT
3701G	2	3/4" FLAT WASHER
3704G	2	3/4" HEX NUT
3717G	2	3/4" x 2 1/2" HEX HD BOLT (A-325)
3900G	2	1" FLAT WASHER
3910G	2	1" HEX NUT
4254G	4	3/8" FLAT WASHER
4255G	2	3/8" FENDER WASHER (1 1/2" OD)
4258G	2	3/8" LOCKWASHER
4261G	2	3/8" x 1 1/2" HEX HD BOLT (GR-5)
4860B	5	WOOD BLOCK 1'2 x 5 x 12" DR
4899G	2	3/4" LOCK WASHER
6321G	2	3/8" x 2" HEX HD BOLT (GR-5)
6405G	4	3/8" HEX NUT
15000G	1	POST SYT #2
19258A	1	5/8" x 8" x 8" BEARING PLATE
20442G	1	12/15'-7.5/3'-1.5:206'-3"/S (GUARDRAIL)
33875G	1	ANGLE STRUT (ET/SYTP/HBA)
33873A	1	POST ET PLUS HBA #1 BOTTOM
49398A	1	POST ET PLUS HBA #1 TOP

- NOTES:**
- DO NOT ATTACH GUARDRAIL TO POST # 1.
 - MANUFACTURER SUGGESTS CUSTOMER TO PROVIDE REFLECTORIZER OF TERMINAL.
 - 12" DEEP PLASTIC OFFSET BLOCKS (ROUTED) ARE ACCEPTABLE ALTERNATES.

WASHINGTON STATE DEPARTMENT OF TRANSPORTATION

Approved
 Approved with revision
 Rejected

BY: R. Simons
 DATE: 2/13/12



The drawings and the information shown thereon are copyrighted by Trinity Highway Products (2010) and the sole property of Trinity Highway Products. Neither the drawings nor such information is to be used for any purpose other than that for which it was specifically furnished from Trinity Highway Products, LLC, nor is any reproduction authorized without written permission.

2	SG	BT	1/13/12	ADDED NOTE
1	SG	BT	7/27/10	REMOVED PN 782, ADDED PN 19258
REV.	CHK'D	BY	DATE	REMARKS

ET-31

ET-31
 31" HIGH WITH 12" BLOCKS; 40'-7 1/2"
 W/3 PANELS, 1 SYT/1 HBA/5 LINE POSTS
 PLAN, ELEVATION & SECTION

TRINITY HIGHWAY PRODUCTS, LLC.
 2525 STEMMONS FREEWAY
 DALLAS, TX 75207

DRAWN	BT
CHECKED	SG
SCALE	N.T.S.
DATE	03-04-10
ENG. FILE #	SS566-0E1
SHT. No.	E1 OF 1
DRAWING NO.	SS-566
REV.	2