

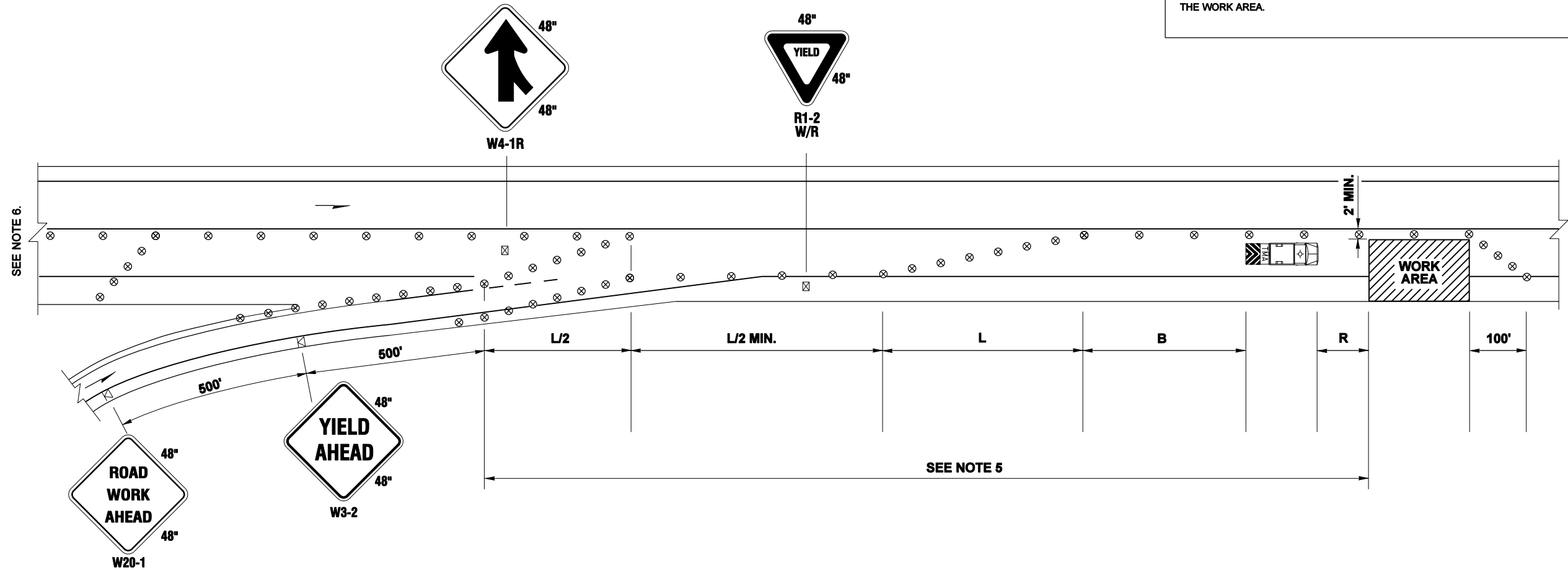
SIGN SPACING = X (1)		
FREEWAYS & EXPRESSWAYS	55 / 70 MPH	1500' ± (OR AS PER MUTCD)
RURAL HIGHWAYS	60 / 65 MPH	800' ±
RURAL ROADS	45 / 55 MPH	500' ±

(1) ALL SPACING MAY BE ADJUSTED TO ACCOMMODATE INTERCHANGE RAMPS, AT-GRADE INTERSECTIONS AND DRIVEWAYS.

MINIMUM TAPER LENGTH = L (feet)										
LANE WIDTH (feet)	Posted Speed (mph)									
	25	30	35	40	45	50	55	60	65	70
10	-	-	-	-	450	500	550	-	-	-
11	-	-	-	-	495	550	605	660	-	-
12	-	-	-	-	540	600	660	720	780	840

CHANNELIZATION DEVICE SPACING (feet)		
MPH	TAPER	TANGENT
50/70	40	80
40/45	30	60

BUFFER DATA										
LONGITUDINAL BUFFER SPACE = B										
SPEED (MPH)	25	30	35	40	45	50	55	60	65	70
LENGTH (feet)	-	-	-	-	360	425	495	570	645	730
BUFFER VEHICLE ROLL AHEAD DISTANCE = R										
TRANSPORTABLE ATTENUATOR MINIMUM HOST VEHICLE WEIGHT 15,000 LBS. THE MAXIMUM WEIGHT SHALL BE IN ACCORDANCE WITH THE MANUFACTURERS RECOMMENDATION.										30 FEET MIN. TO 100 FOOT MAX.
PROTECTIVE VEHICLE MAY BE A WORK VEHICLE STRATEGICALLY LOCATED TO SHIELD THE WORK AREA.										NO SPECIFIED DISTANCE REQUIRED



LEGEND

- ⊠ TEMPORARY SIGN LOCATION
- ⊗ TRAFFIC SAFETY DRUM
- ⇨ SEQUENTIAL ARROW SIGN
- ▬ TRANSPORTABLE ATTENUATOR
- ⊠ TEMPORARY SIGN LOCATION (5' MOUNTING HEIGHT)

NOTES:

1. SEE SPECIAL PROVISIONS FOR CLOSURE HOUR RESTRICTIONS.
2. USE A DOWNSTREAM TAPER TO END THE LANE CLOSURE WITH 20' DEVICE SPACING.
3. DEVICES SHALL NOT ENCR OACH INTO ADJACENT LANES.
4. USE TRANSVERSE DEVICES IN CLOSED LANES EVERY 1000'± (RECOMMENDED).
5. USE A SHORT TERM RAMP CLOSURE WHEN THE WORK AREA LOCATION RESTRICTS RAMP ACCESS.
6. SEE TC3 OR TC7 FOR RIGHT LANE CLOSURE.
7. ALL SIGNS ARE BLACK ON ORANGE UNLESS OTHERWISE DESIGNATED.

TEMPORARY ON-RAMP FOR MULTI-LANE ROADWAYS

NOT TO SCALE

FILE NAME	S:\Design R P& S4-Standards\2-Plan Sheet Library\10-Work zone plans (WZ)\TC-1-21\TC-9\TC-9.dgn			REGION NO.	STATE	FED.AID PROJ.NO.	Washington State Department of Transportation	TC9
TIME	8:37:28 AM			10	WASH			
DATE	10/8/2010			JOB NUMBER			TRAFFIC CONTROL PLAN	SHEET OF SHEETS
PLOTTED BY	Cyfordl			CONTRACT NO.				
DESIGNED BY								
ENTERED BY								
CHECKED BY								
PROJ. ENGR.								
REGIONAL ADM.	REVISION	DATE	BY					