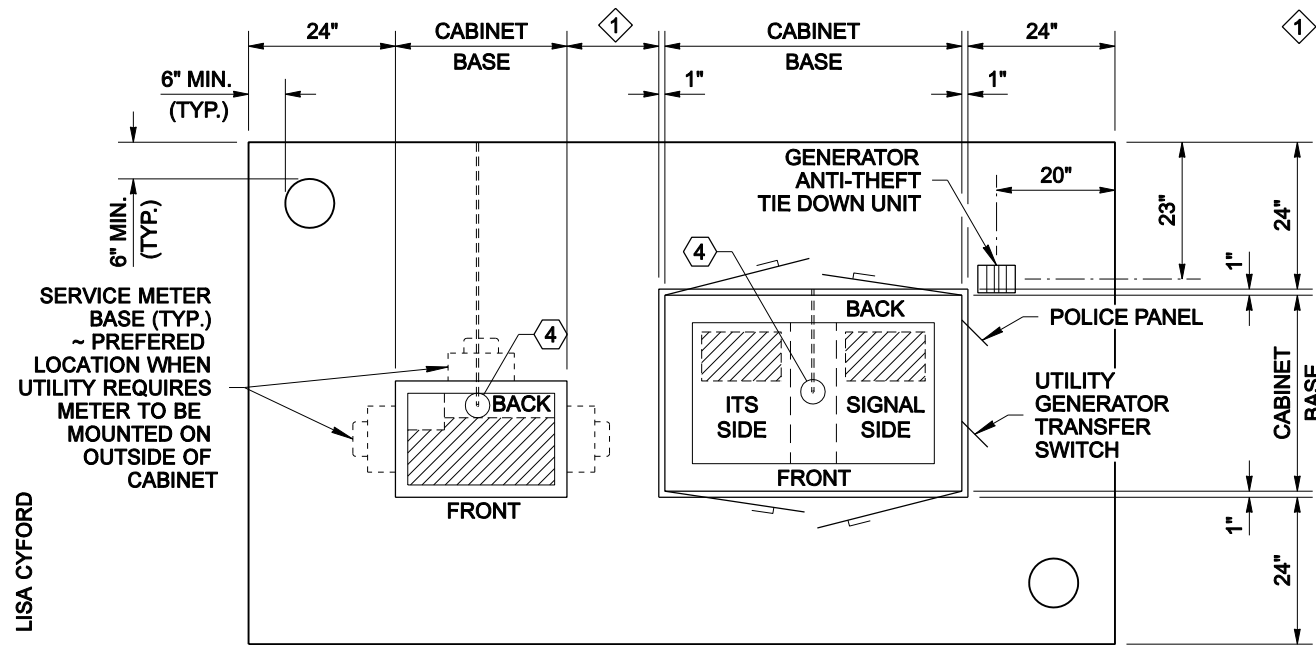


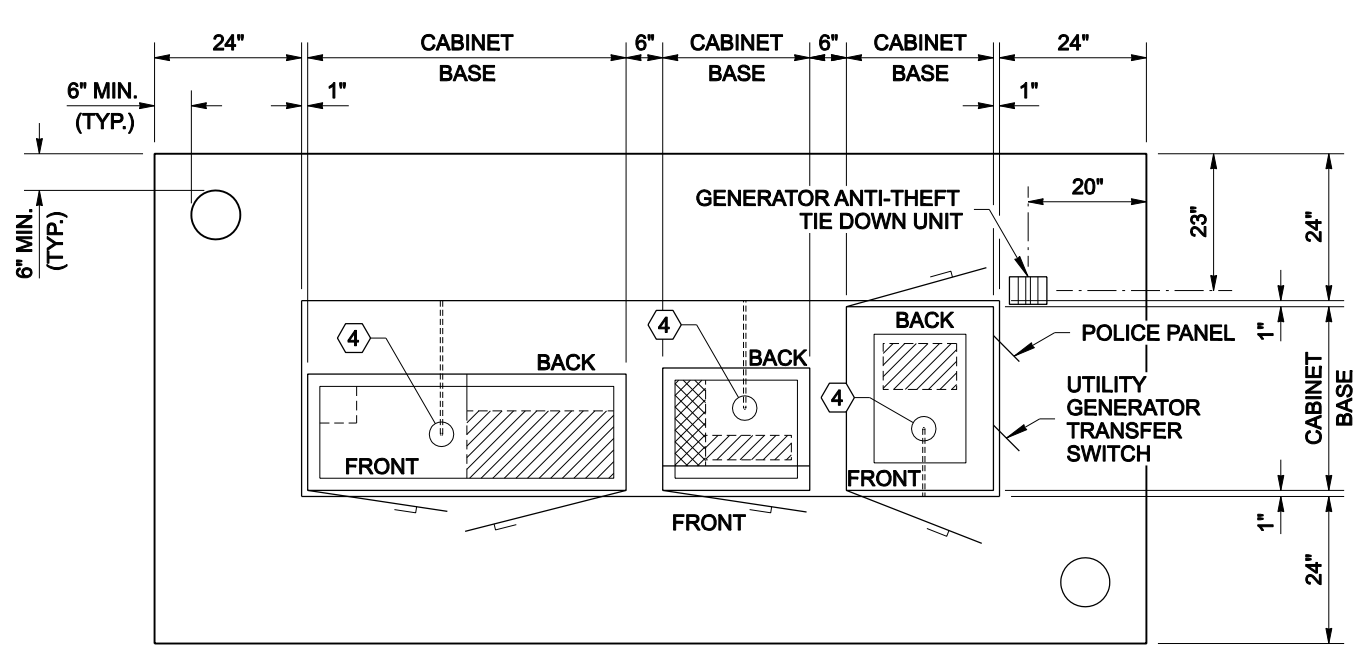


DRAWN BY: LISA CYFORD

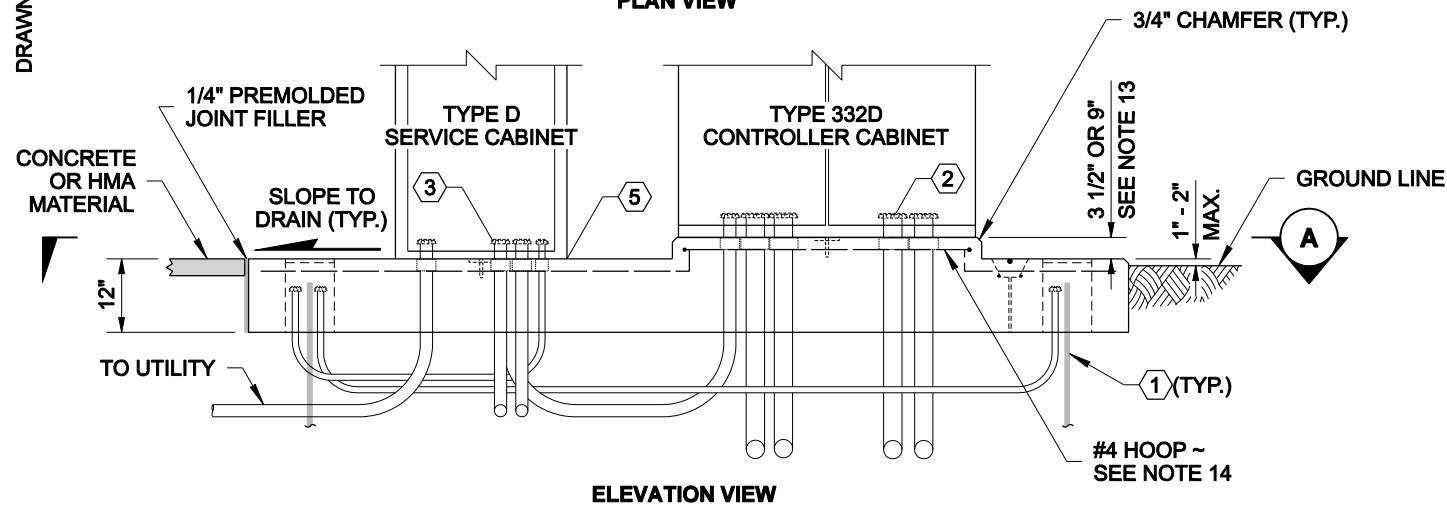


PLAN VIEW

1 With Meter Base mounted on inside of Service Cabinet, allow 6" between Cabinets  
 With Meter Base mounted on outside of Service Cabinet, allow 36" from face of meter to adjacent Cabinet. See Standard Plan J-3c

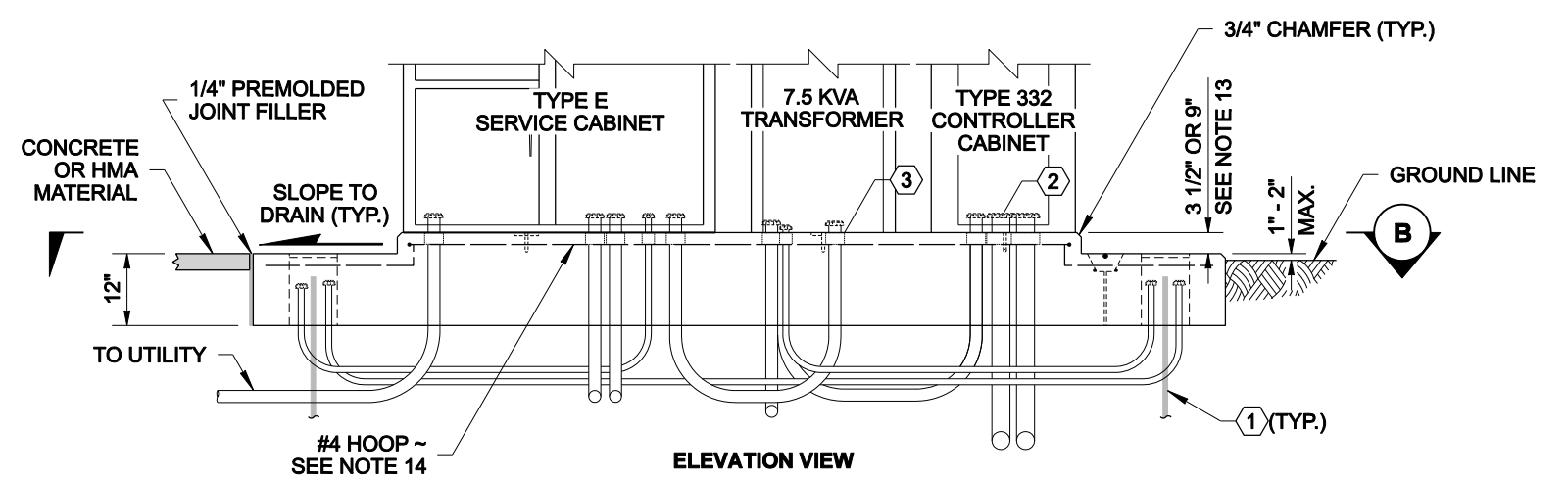


PLAN VIEW



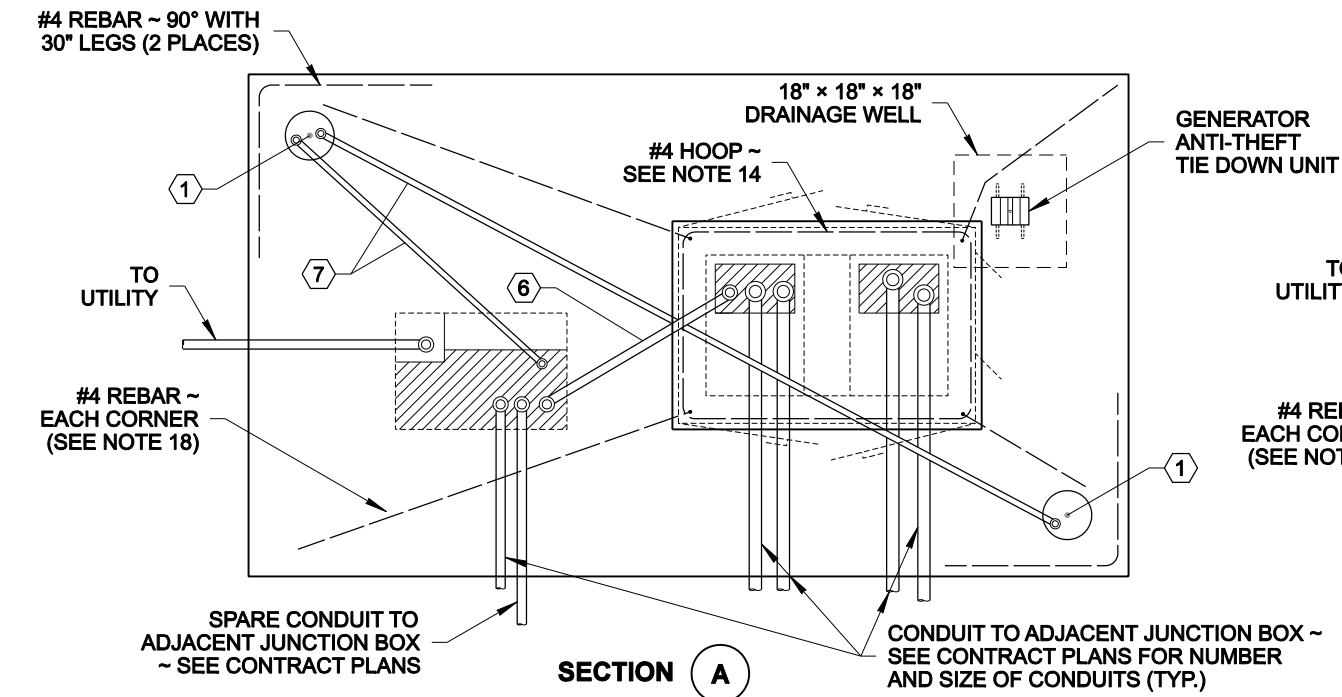
ELEVATION VIEW

**TWO CABINET FOUNDATION**  
 (TYPE D SERVICE AND TYPE 332D CONTROLLER CABINET SHOWN)

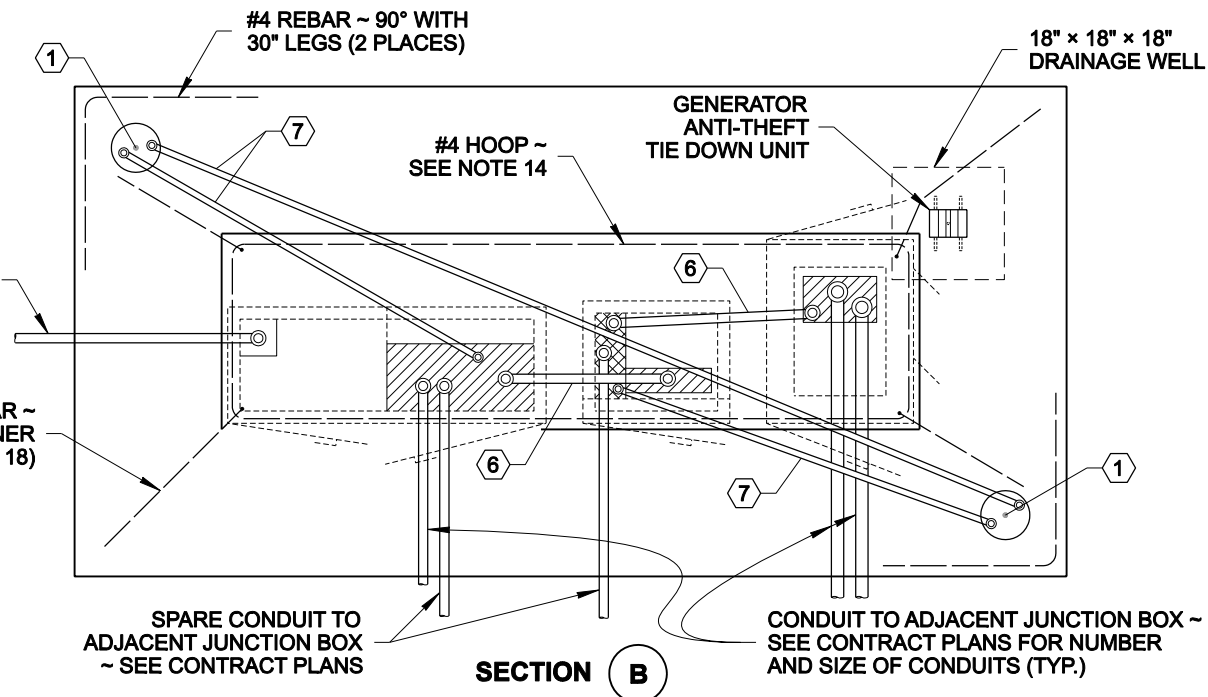


ELEVATION VIEW

**THREE CABINET FOUNDATION**  
 (TYPE E SERVICE, 7.5 KVA TRANSFORMER AND TYPE 332 CONTROLLER CABINET SHOWN)



SECTION A



SECTION B



NOTE: THIS PLAN IS NOT A LEGAL ENGINEERING DOCUMENT UNTIL ELEVATED TO THE STATUS OF A CONTRACT BY THE ENGINEER AND APPROVED FOR OR CALLED TO BE ON FILE AT THE WASHINGTON STATE DEPARTMENT OF TRANSPORTATION. A COPY MAY BE OBTAINED UPON REQUEST.

**CABINET ORIENTATION  
 CONDUIT LAYOUT AND  
 FOUNDATION DETAIL  
 STANDARD PLAN J-10.10-01**

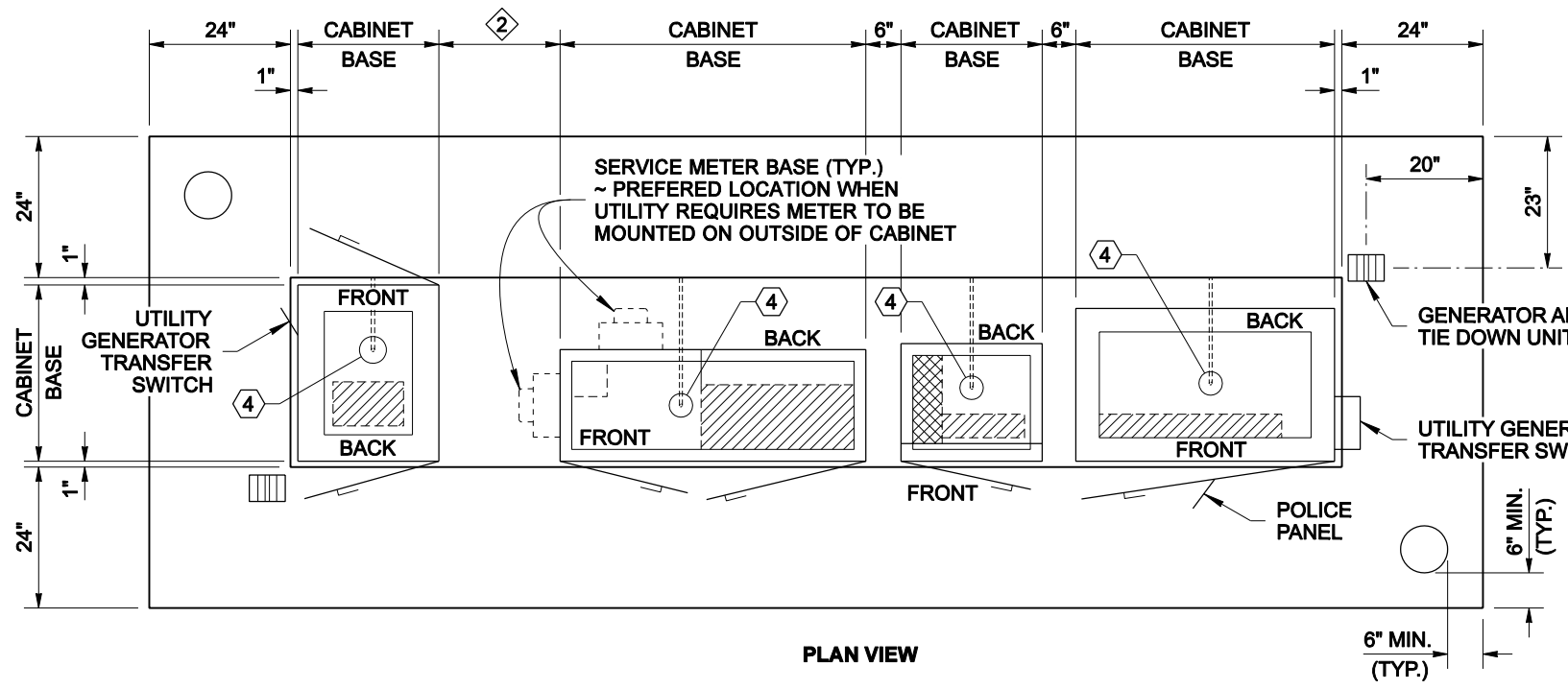
SHEET 2 OF 5 SHEETS

APPROVED FOR PUBLICATION

**Pasco Bakotich III** 05-11-11  
 STATE DESIGN ENGINEER DATE

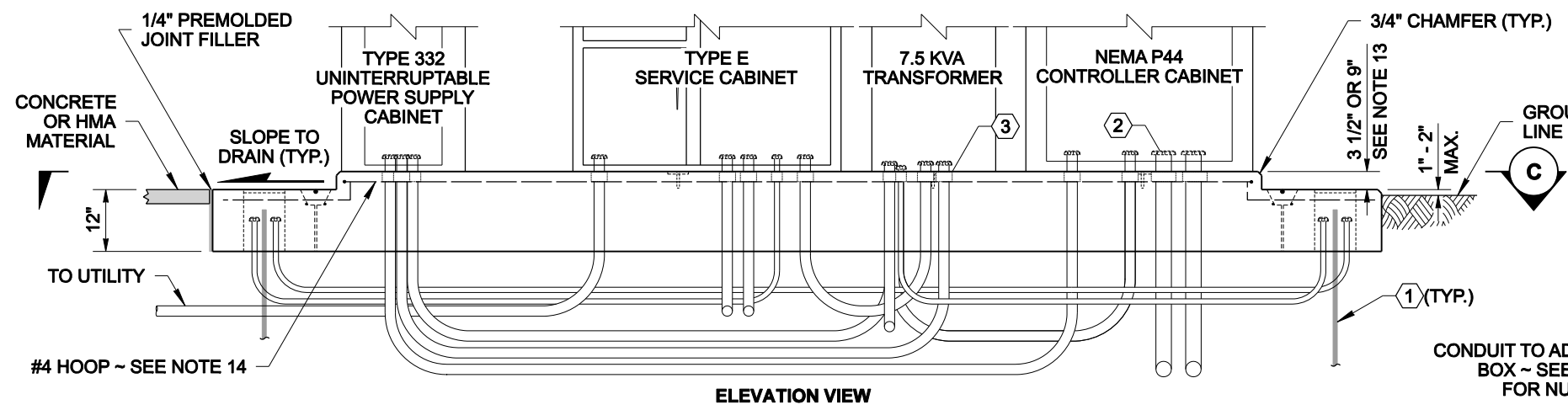
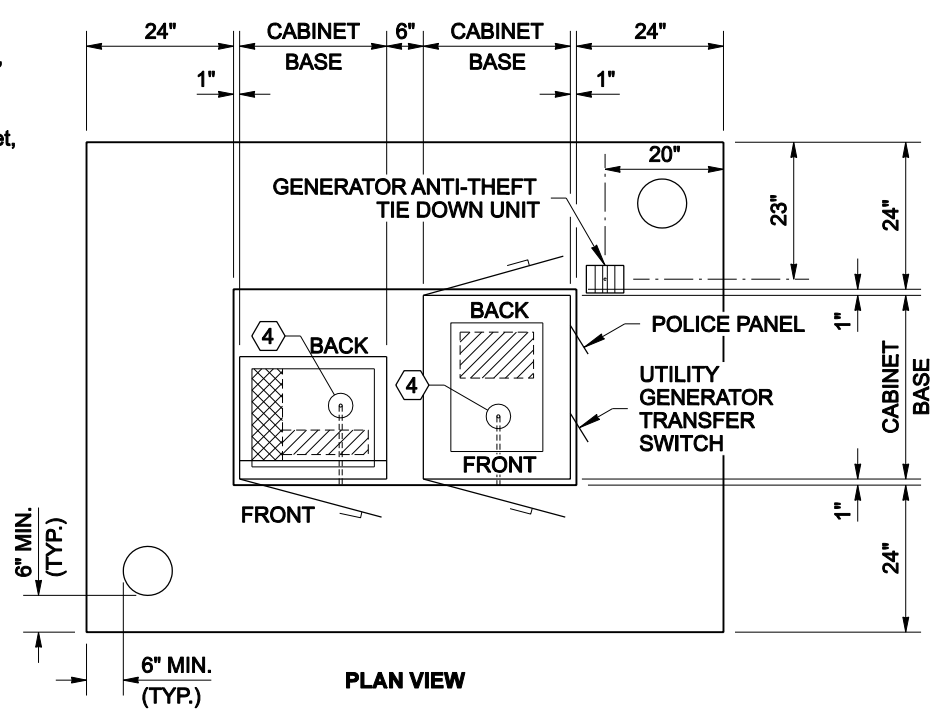


DRAWN BY: LISA CYFORD

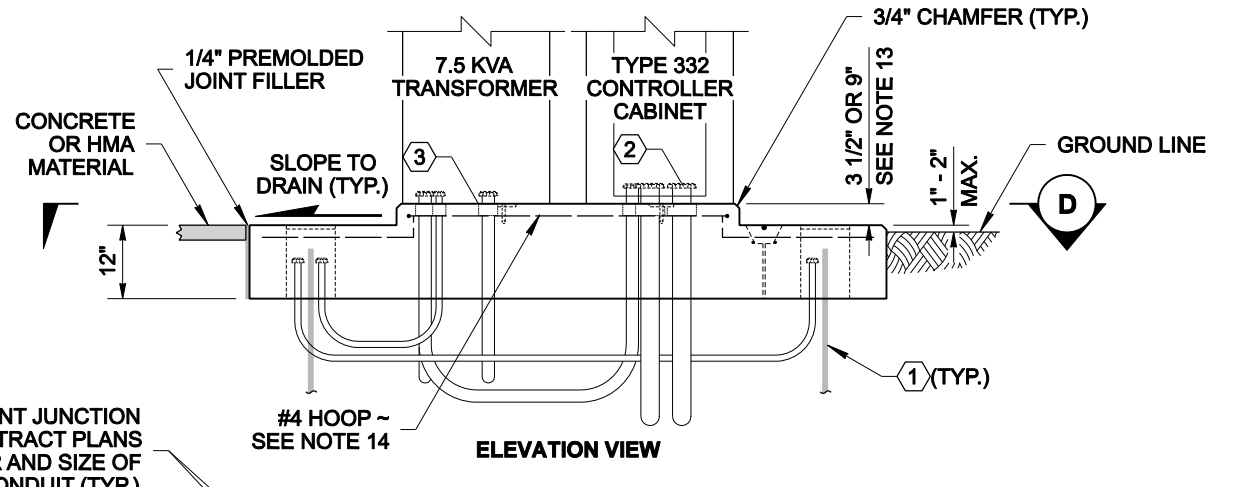


2 With Meter Base mounted on inside of Service Cabinet, allow 6" between cabinets

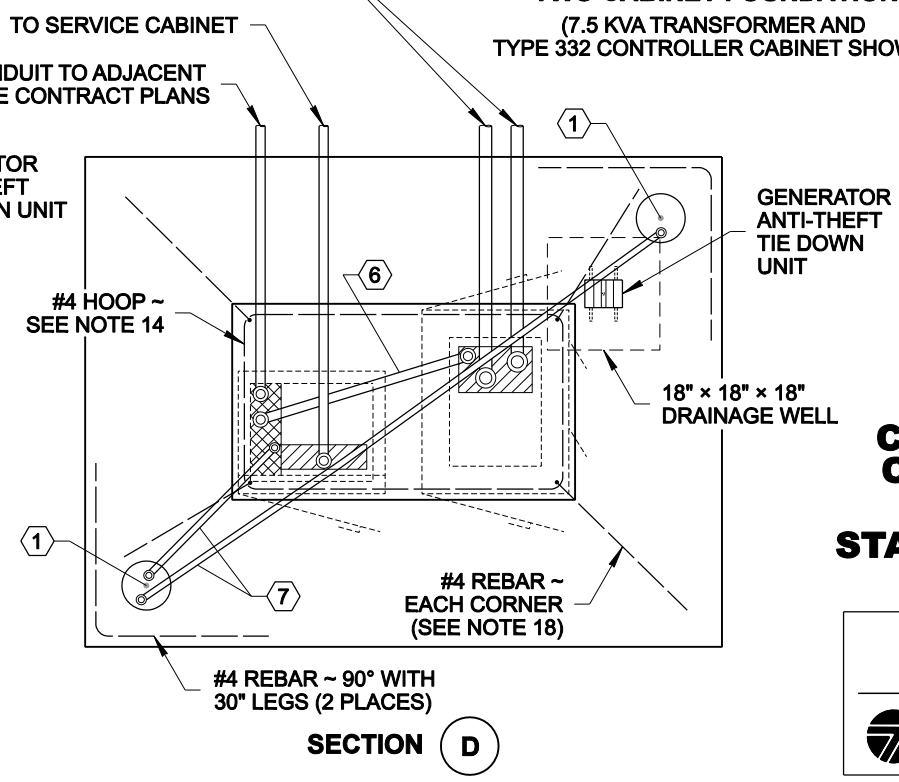
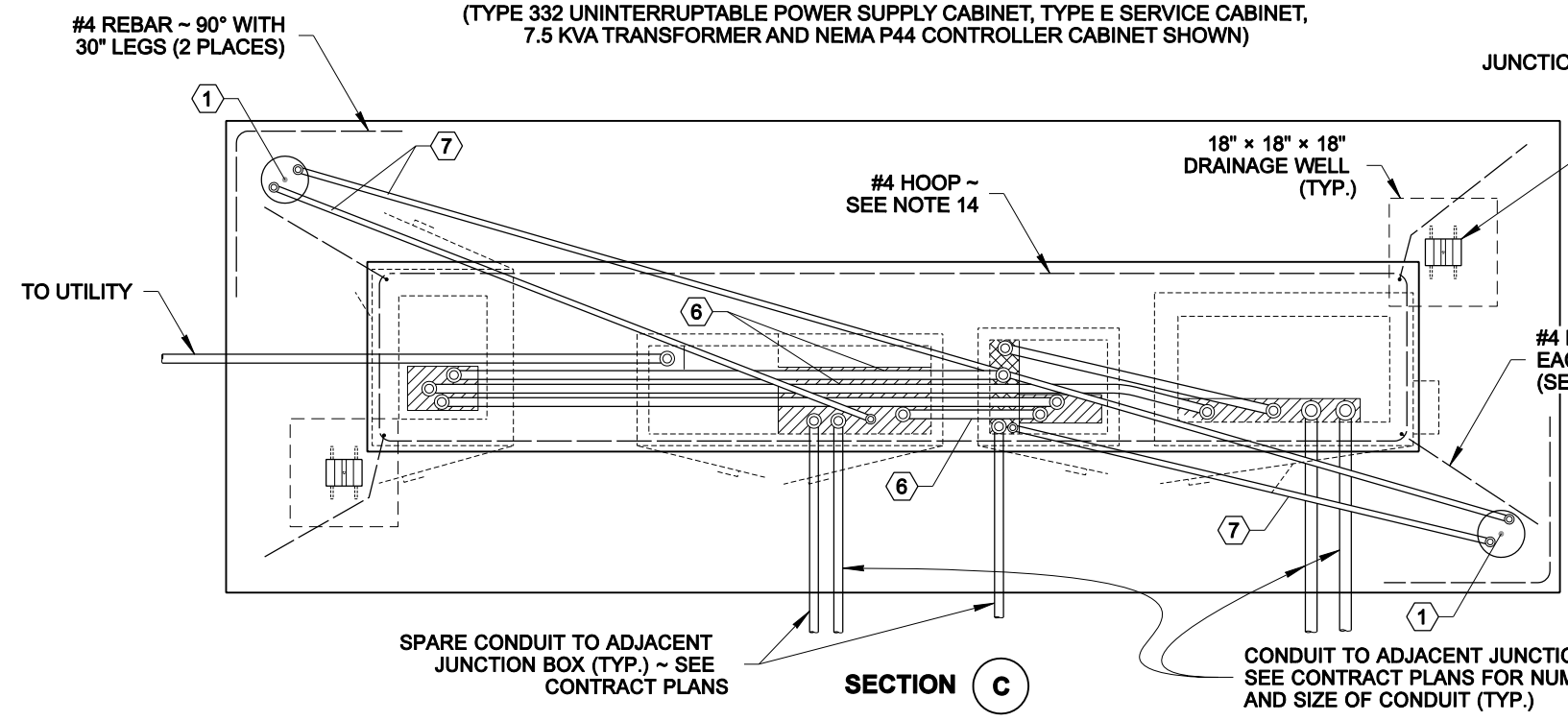
With Meter Base mounted on outside of Service Cabinet, allow 36" from face of meter to adjacent Cabinet. See Standard Plan J-3d



**FOUR CABINET FOUNDATION**  
(TYPE 332 UNINTERRUPTIBLE POWER SUPPLY CABINET, TYPE E SERVICE CABINET, 7.5 KVA TRANSFORMER AND NEMA P44 CONTROLLER CABINET SHOWN)



**TWO CABINET FOUNDATION**  
(7.5 KVA TRANSFORMER AND TYPE 332 CONTROLLER CABINET SHOWN)



NOTE: THIS PLAN IS NOT A LEGAL ENGINEERING DOCUMENT UNLESS IT IS APPROVED BY THE ENGINEER AND APPROVED BY THE CONTRACTOR. IT IS TO BE FILED AT THE WASHINGTON STATE DEPARTMENT OF TRANSPORTATION. A COPY MAY BE OBTAINED UPON REQUEST.

**CABINET ORIENTATION  
CONDUIT LAYOUT AND  
FOUNDATION DETAIL  
STANDARD PLAN J-10.10-01**

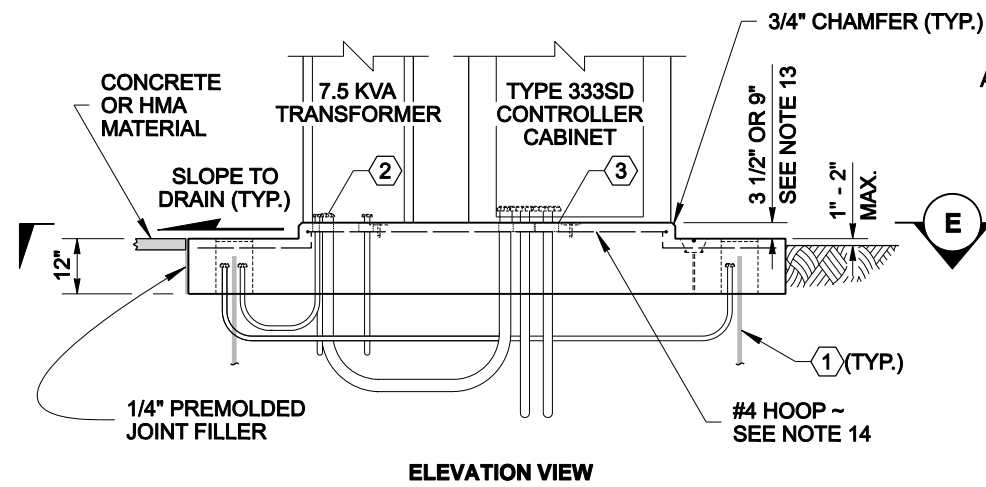
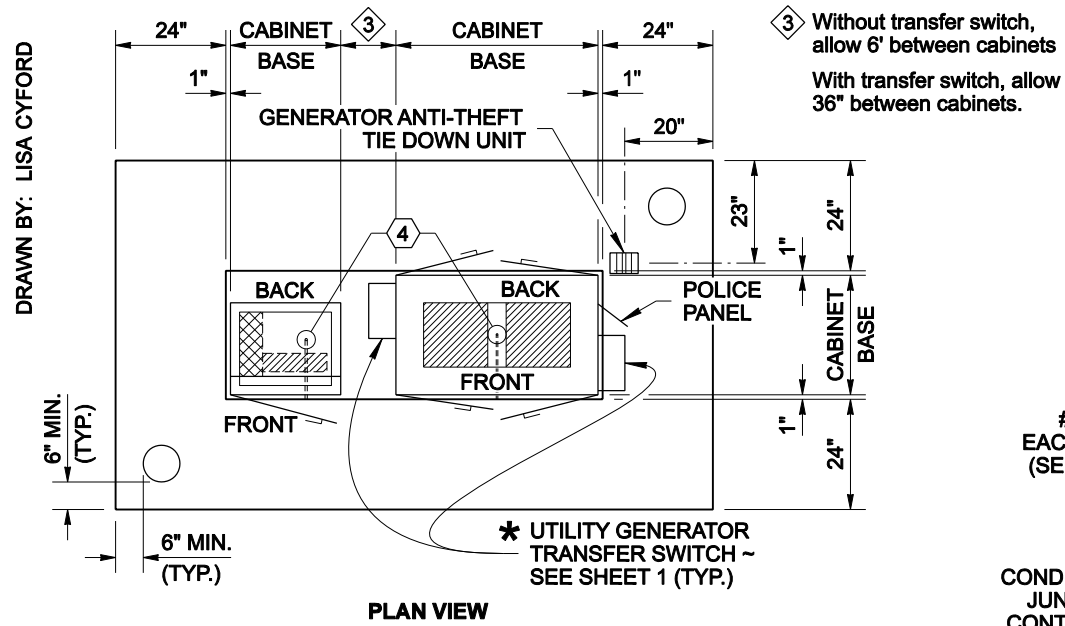
SHEET 3 OF 5 SHEETS

APPROVED FOR PUBLICATION

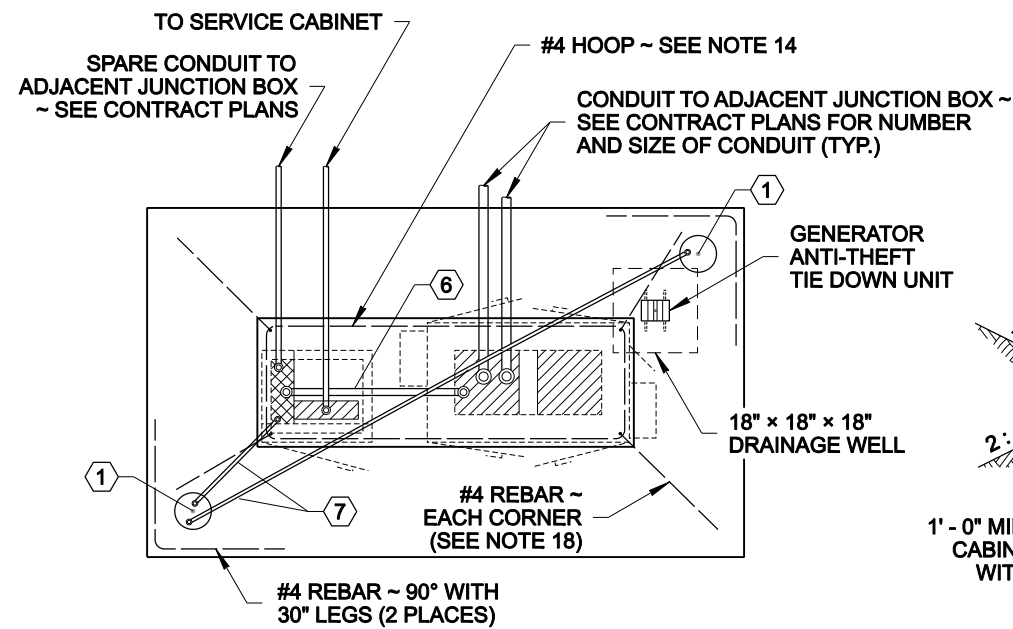
**Pasco Bakotich III** 05-11-11  
STATE DESIGN ENGINEER DATE

Washington State Department of Transportation

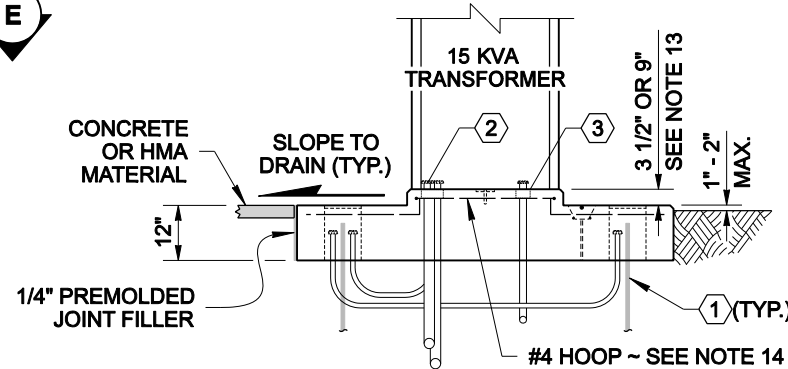
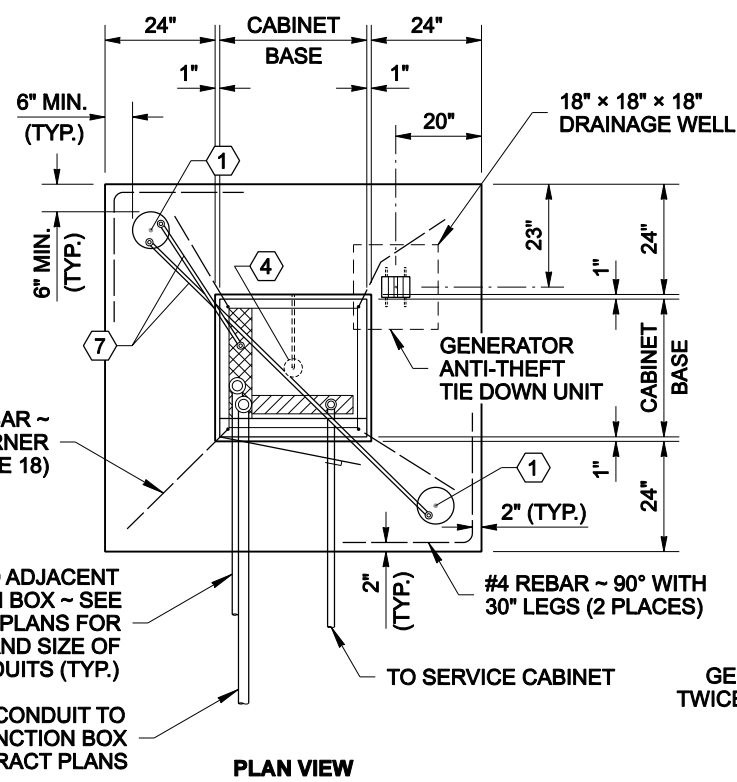
DRAWN BY: LISA CYFORD



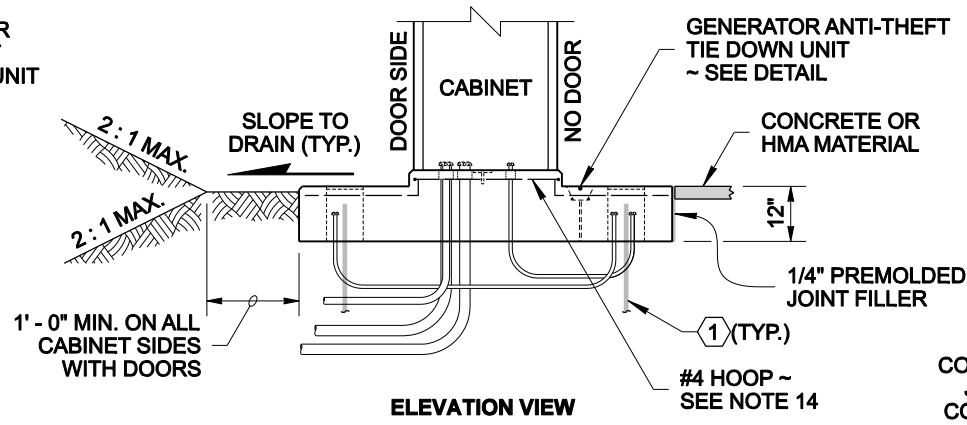
**TWO CABINET FOUNDATION**  
(7.5 KVA TRANSFORMER AND TYPE 333SD CONTROLLER CABINET SHOWN)



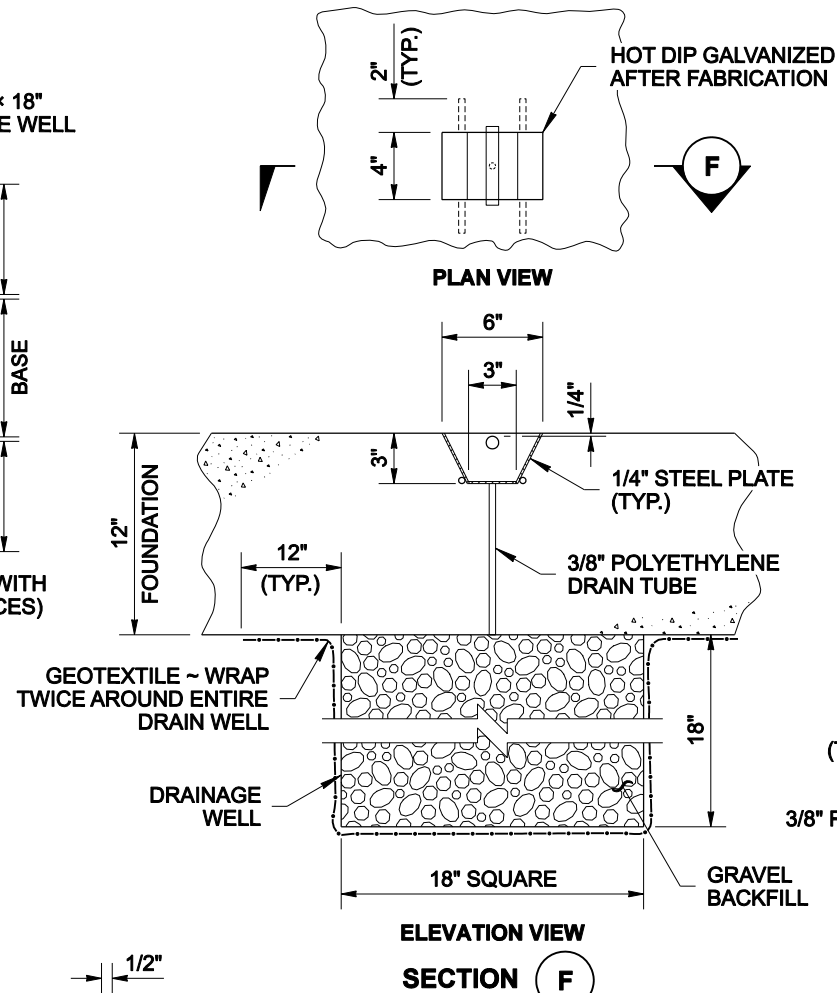
**SECTION E**



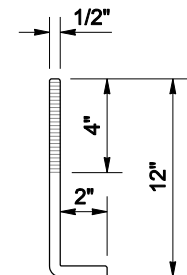
**SINGLE CABINET FOUNDATION**  
(15 KVA TRANSFORMER SHOWN)



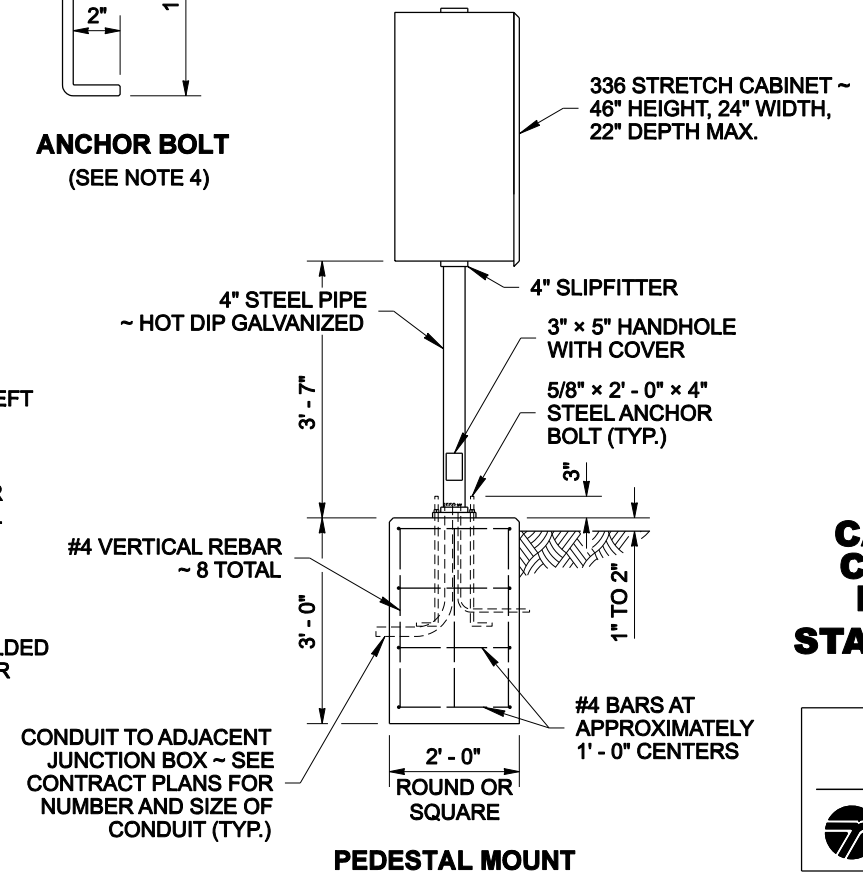
**TYPICAL FOUNDATION CROSS SECTION**  
(SEE NOTE 12)



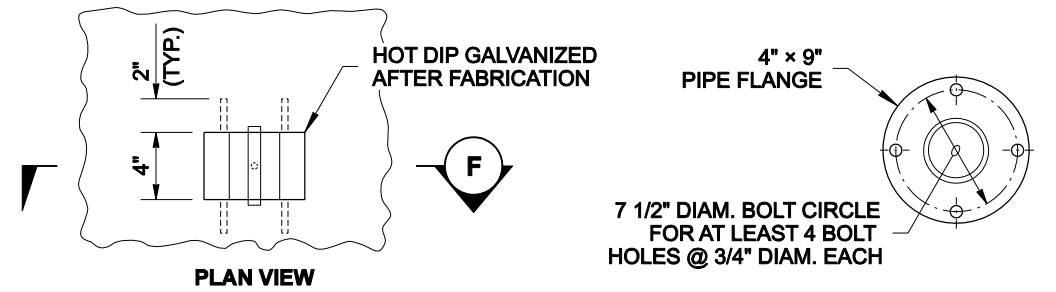
**GENERATOR ANTI-THEFT TIE DOWN UNIT**  
(FABRICATE IF NOT AVAILABLE COMMERCIALY)



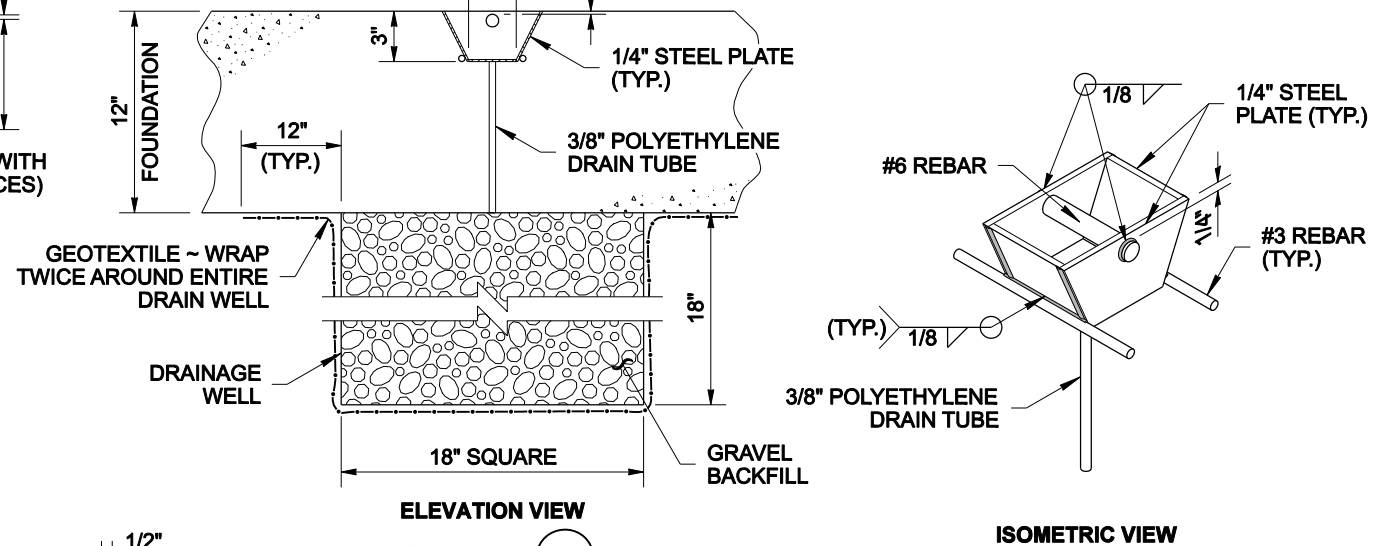
**ANCHOR BOLT**  
(SEE NOTE 4)



**PEDESTAL MOUNT**



**PEDESTAL BASE DETAIL**



**ISOMETRIC VIEW**



NOTE: THIS PLAN IS NOT A LEGAL ENGINEERING DOCUMENT  
NOTE: ELEVATIONS AND DIMENSIONS SHOWN BY THE ENGINEER ARE APPROVED FOR CONSTRUCTION. THE FILE AT THE WASHINGTON STATE DEPARTMENT OF TRANSPORTATION. A COPY MAY BE OBTAINED UPON REQUEST.

**CABINET ORIENTATION  
CONDUIT LAYOUT AND  
FOUNDATION DETAIL  
STANDARD PLAN J-10.10-01**

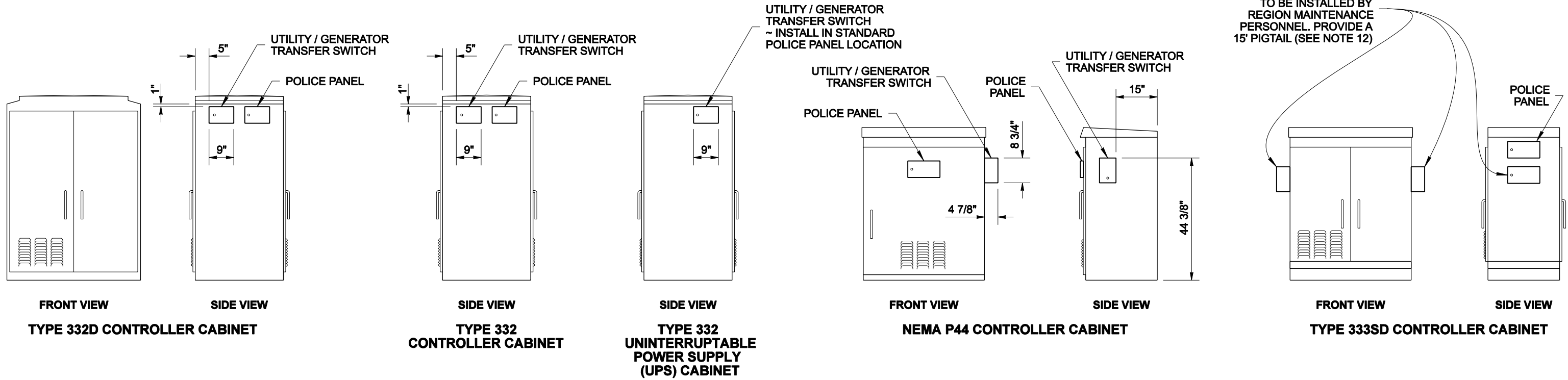
SHEET 4 OF 5 SHEETS

APPROVED FOR PUBLICATION

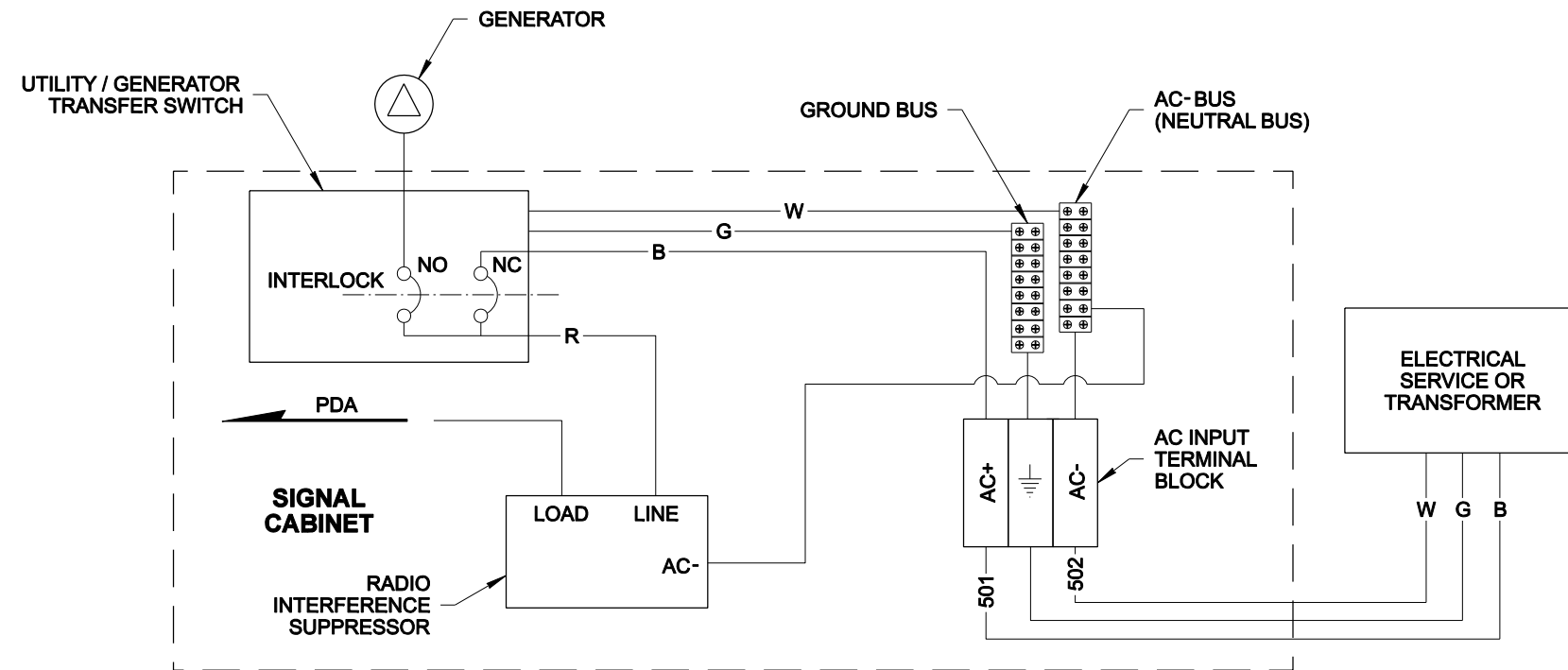
**Pasco Bakotich III** 05-11-11  
STATE DESIGN ENGINEER DATE



DRAWN BY: LISA CYFORD



UTILITY / GENERATOR TRANSFER SWITCH ~ TO BE INSTALLED BY REGION MAINTENANCE PERSONNEL. PROVIDE A 15' PIGTAIL (SEE NOTE 12)



**TRANSFER SWITCH CONNECTION  
TYPICAL WIRING DIAGRAM**



NOTE: THIS PLAN IS NOT A LEGAL ENGINEERING DOCUMENT UNTIL IT IS APPROVED AND SEALED BY THE ENGINEER. ANY CHANGES TO THIS PLAN MUST BE FILED AT THE WASHINGTON STATE DEPARTMENT OF TRANSPORTATION. A COPY MAY BE OBTAINED UPON REQUEST.

**CABINET ORIENTATION  
CONDUIT LAYOUT AND  
FOUNDATION DETAIL  
STANDARD PLAN J-10.10-01**

SHEET 5 OF 5 SHEETS

APPROVED FOR PUBLICATION

**Pasco Bakotich III** 05-11-11

STATE DESIGN ENGINEER DATE

