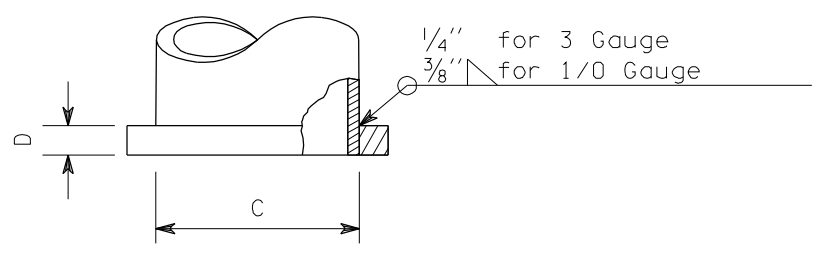
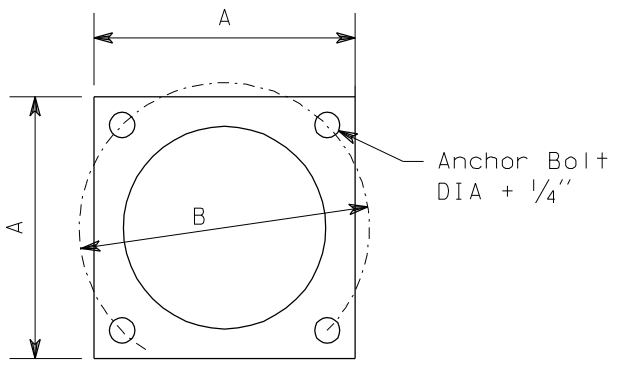
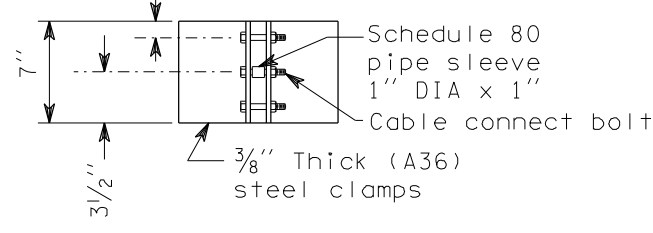
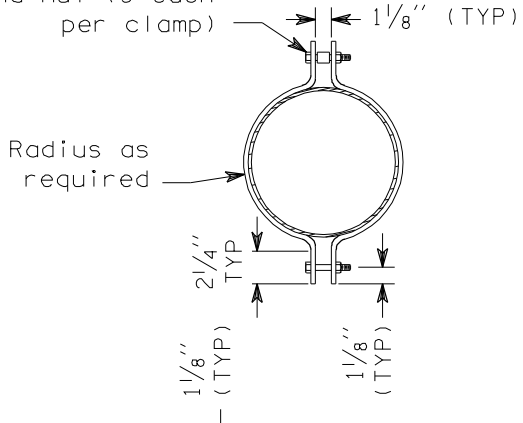
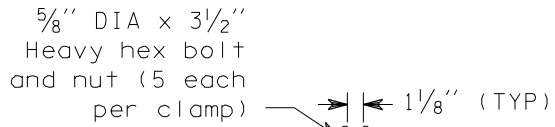
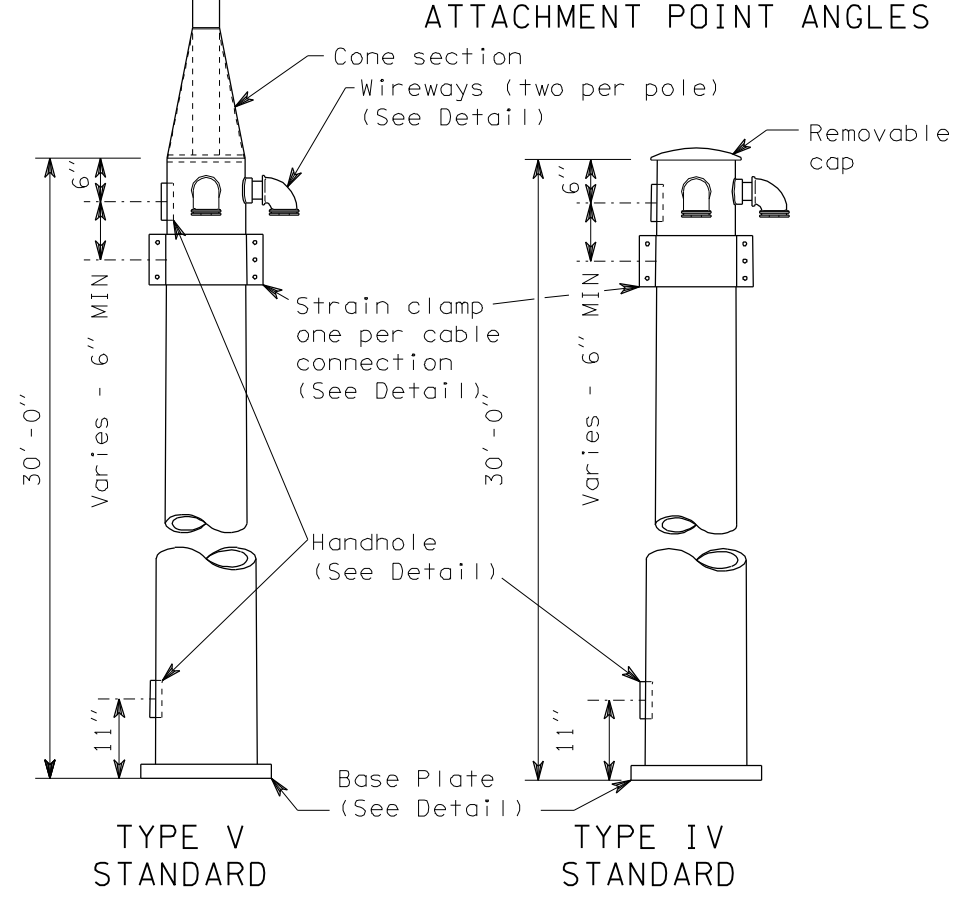
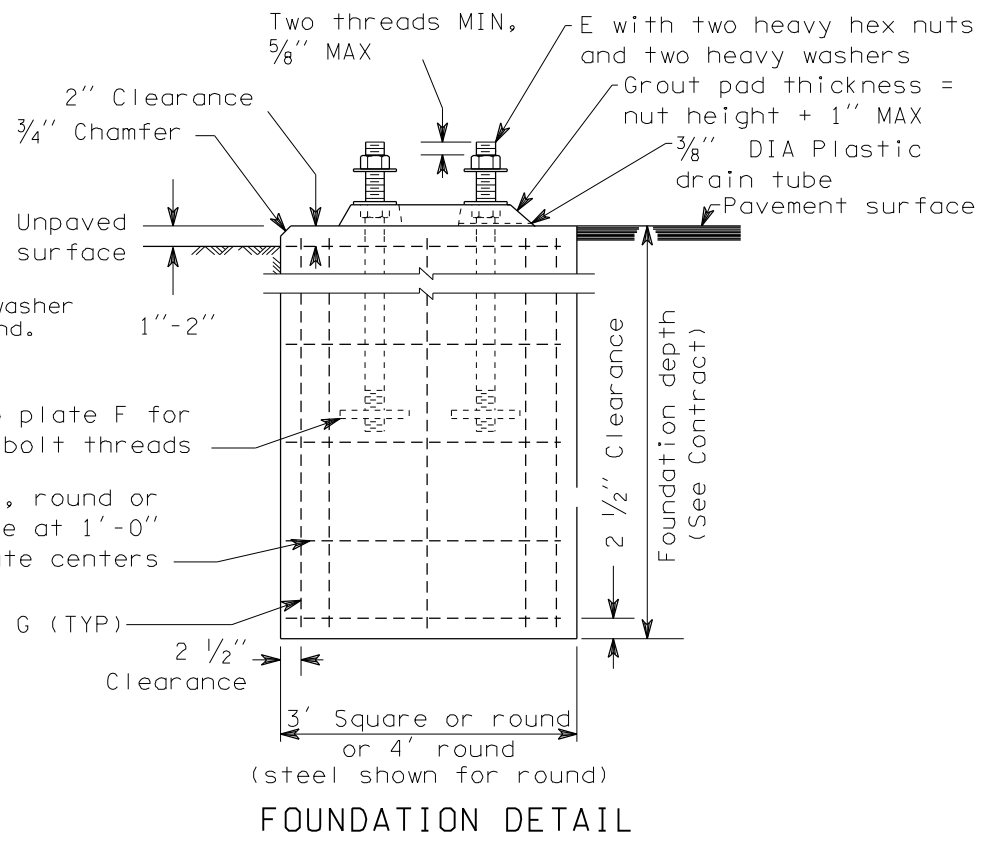
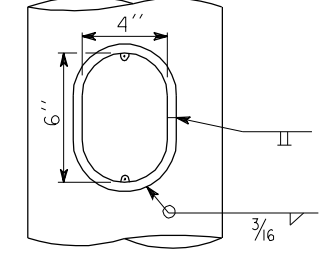
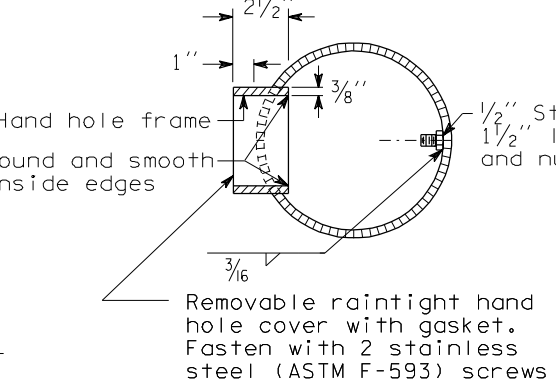
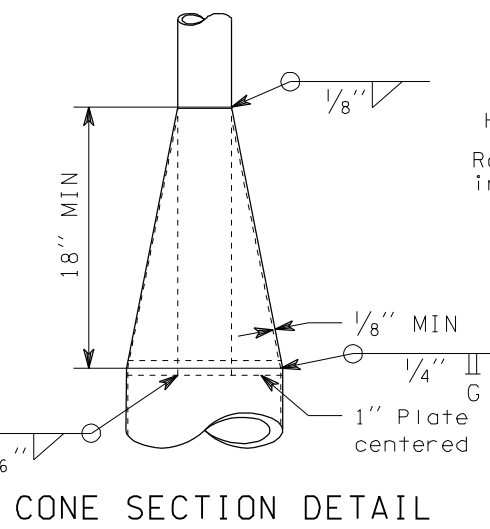
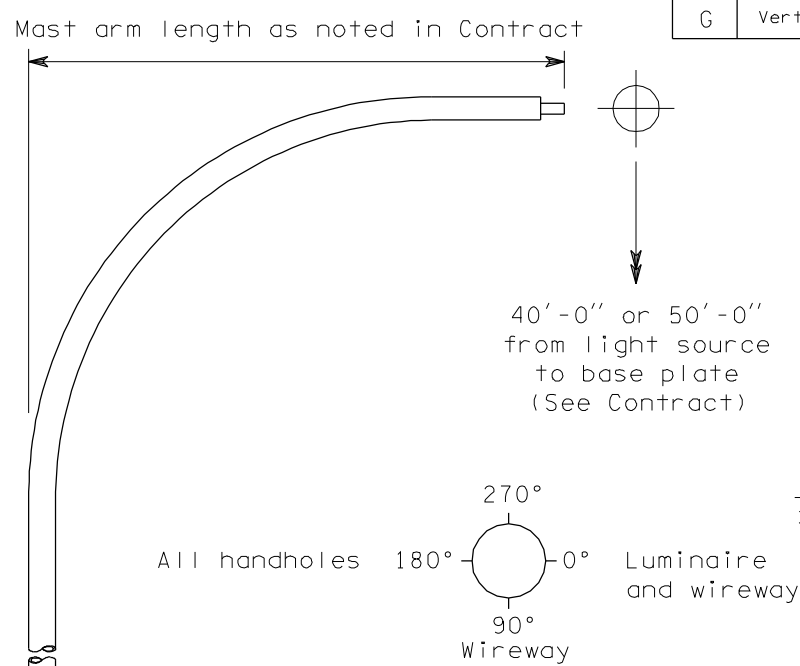


STRAIN POLE DIMENSION CHART								
KEY	ITEM	POLE CLASS (Resultant Horizontal Tension)						
		1900 LB	2700 LB	3700 LB	4800 LB	5600 LB	6300 LB	7200 LB
	Pole gauge	3	3	3	1/0	1/0	1/0	1/0
A	Base plate width	15"	15"	17"	18"	18"	20"	20"
B	Anchor bolt circle diameter	16"	16"	19"	20"	20"	22"	22"
C	Pole base diameter	10"	12"	14"	14"	15"	16"	17"
D	Base plate thickness	1 3/4"	1 3/4"	1 3/4"	2"	2"	2"	2"
E	Anchor bolt size	1"x36"	1 1/4"x60"	1 3/8"x60"	1 1/2"x60"	1 1/2"x60"	1 3/4"x66"	1 3/4"x66"
F	Anchor plate size	1"x3"x3"	1"x4"x4"	1"x4"x4"	1"x5"x5"	1"x5"x5"	1"x6"x6"	1"x6"x6"
G	Vertical steel number and size	Eight #5	Eight #6	Eight #7	Eight #7	Eight #8	Eight #8	Eight #9

- NOTES
- 2 1/2" diameter weatherhead may be substituted for the elbow and nipple assembly.
  - Pole shaft shall have 0.14"/ft taper.
  - See Standard Plan J-7d for details.
  - Handholes may be 6" x 4" oval or rectangle.



NOTE: THIS PLAN IS NOT A LEGAL ENGINEERING DOCUMENT BUT AN ELECTRONIC DUPLICATE. THE ORIGINAL, SIGNED BY THE ENGINEER AND APPROVED FOR PUBLICATION, IS KEPT ON FILE AT THE WASHINGTON STATE DEPARTMENT OF TRANSPORTATION. A COPY MAY BE OBTAINED UPON REQUEST.

STRAIN POLE STANDARDS  
TYPE IV AND V  
STANDARD PLAN J-7c

APPROVED FOR PUBLICATION  
**Clifford E. Mansfield** 06-19-98  
STATE DESIGN ENGINEER DATE  
WASHINGTON STATE DEPARTMENT OF TRANSPORTATION  
OLYMPIA, WASHINGTON