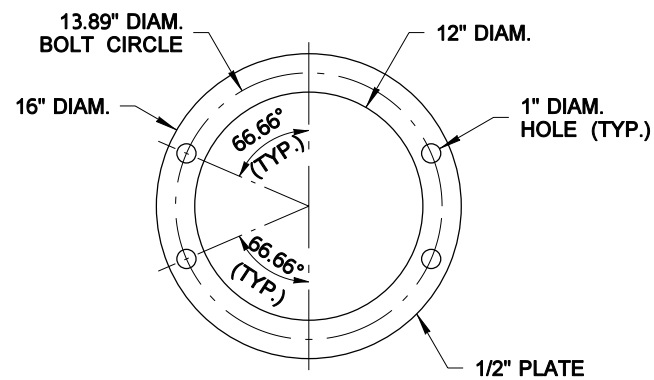


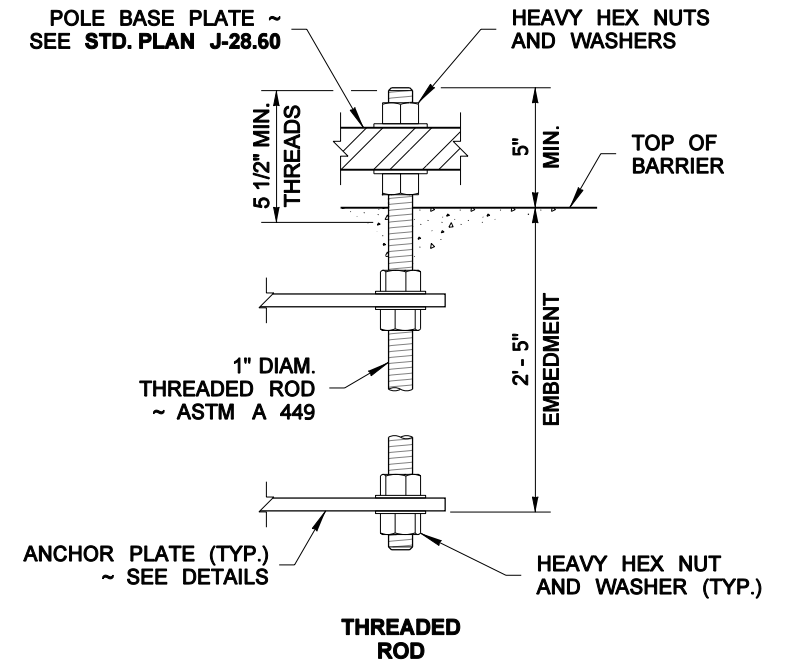
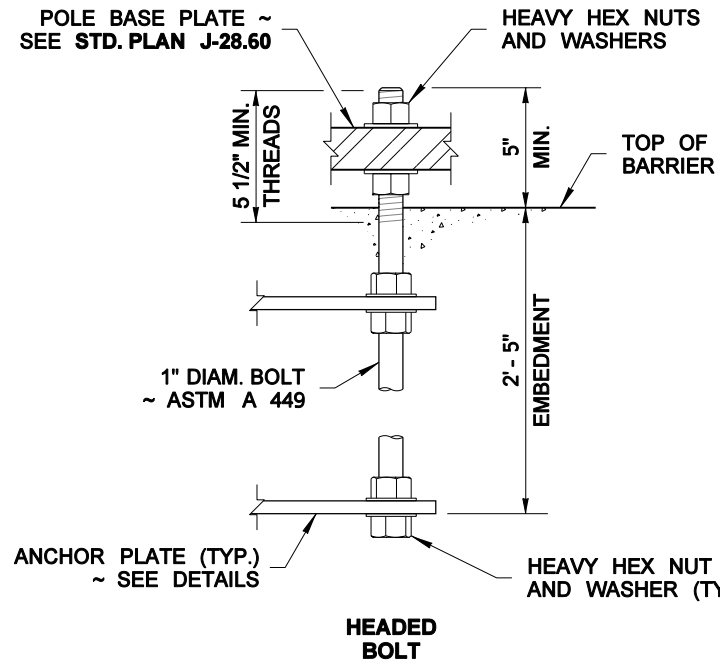
DETAIL "A"

ANCHOR BOLT (TYP.)
~ SEE DETAIL

2" CONDUIT
~ SEE NOTE 4



ANCHOR PLATE



ANCHOR BOLT DETAIL

GALVANIZE EXPOSED ANCHOR ROD END 1'-0" MIN.

| BAR LIST | | | | | BENDING DIAGRAM | |
|----------|-----------------|------|------|--------------------|---------------------------------|--|
| MARK | LOCATION | QTY. | SIZE | LENGTH | (ALL DIMENSIONS ARE OUT TO OUT) | |
| ① | FOOTING - DOWEL | 28 | #4 | 4' - 3" | | |
| ② | FOOTING | 18 | | 4' - 8" | | |
| ③ | FOOTING | 9 | | 8' - 8" | | |
| ④ | BARRIER | 4 | | 21' - 0" | | |
| ⑤ | BARRIER | 4 | | 21' - 0" | | |
| ⑥ | BARRIER | 30 | | 5' - 3" TO 6' - 9" | | |



NOTE: THIS PLAN IS NOT A LEGAL ENGINEERING DOCUMENT BUT AN ELECTRONIC DUPLICATE THE ORIGINAL SIGNED BY THE ENGINEER AND APPROVED FOR PUBLICATION IS KEPT ON FILE AT THE WASHINGTON STATE DEPARTMENT OF TRANSPORTATION. A COPY MAY BE OBTAINED UPON REQUEST.

**CONCRETE BARRIER
LIGHT STANDARD SECTION**

STANDARD PLAN C-8b

SHEET 2 OF 2 SHEETS

APPROVED FOR PUBLICATION

Pasco Bakotich III 06-27-11

STATE DESIGN ENGINEER DATE

