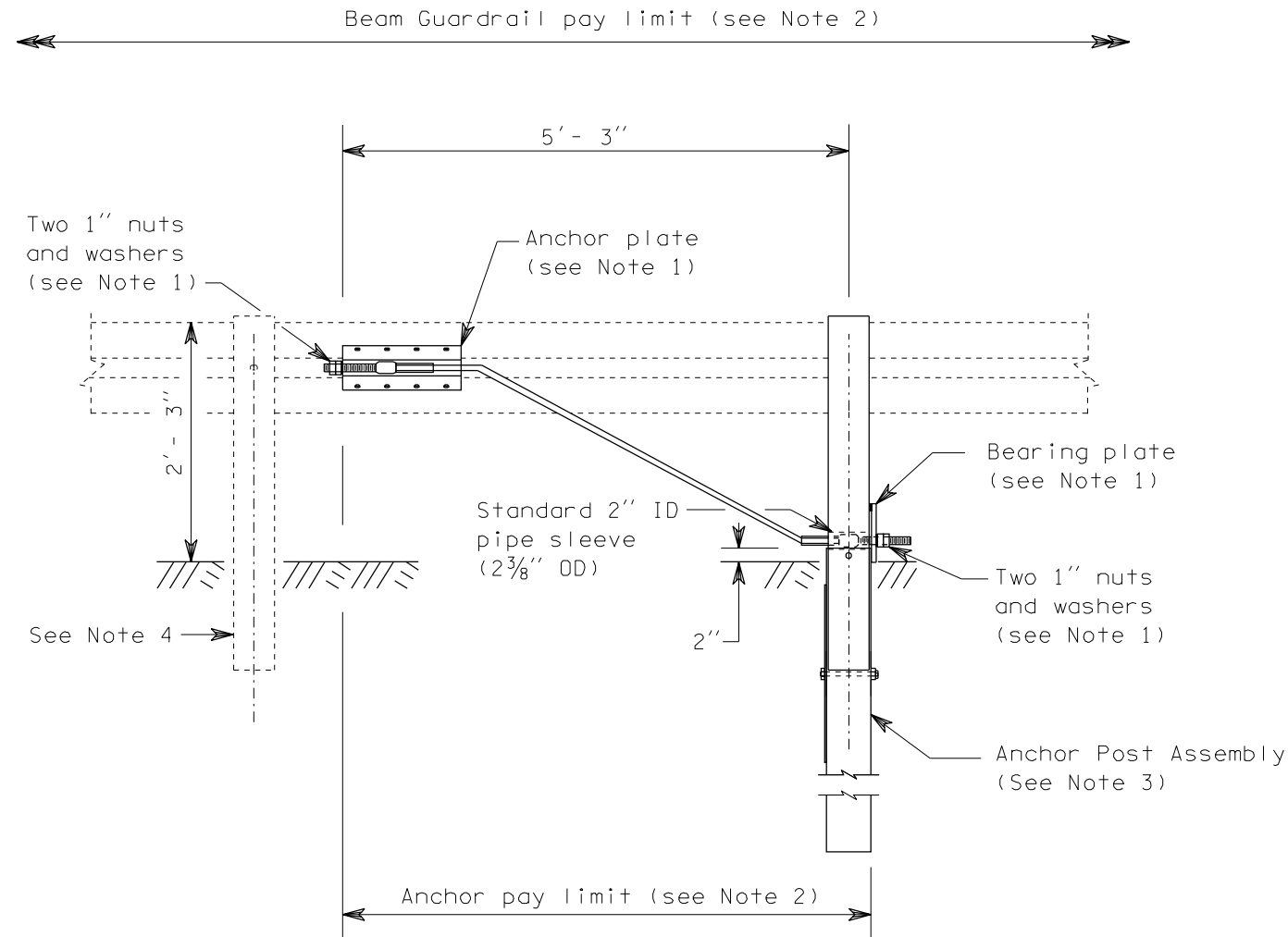


NOTES

1. For details, see Standard Plan, "Beam Guardrail Anchor Type 1".
2. The rail element is to be included in the "Beam Guardrail" pay item. The "Anchor" pay item includes the anchor post, anchor plate, anchor cable, bearing plate, nuts and washers.
3. For details, see Standard Plan, "Beam Guardrail Posts and Blocks".
4. Post shall match beam guardrail posts.



TYPE 7 ANCHOR

BEAM GUARDRAIL ANCHOR
TYPE 7



EXPIRES MAY 3, 1998

NOTES: THIS IS AN IN PART LEGAL ENGINEERING DOCUMENT. IT IS THE PROPERTY OF THE ENGINEER AND APPROVED FOR PUBLICATION. IT IS NOT TO BE REPRODUCED OR TRANSMITTED IN ANY FORM OR BY ANY MEANS, ELECTRONIC OR MECHANICAL, WITHOUT THE WRITTEN PERMISSION OF THE ENGINEER. A COPY WILL BE SUPPLIED UPON REQUEST.

STANDARD PLAN C-6f

APPROVED FOR PUBLICATION

Donald K. Nelson

STATE DESIGN ENGINEER

07/25/97

DATE



WASHINGTON STATE DEPARTMENT OF TRANSPORTATION
OLYMPIA, WASHINGTON