

TYPE 1 ANCHOR

NOTES

- Anchor plate may be constructed from $\frac{1}{4}$ " plates welded to equal strength and dimensions as shown.
- For end section details see Standard Plan "Beam Guardrail End Sections".
- For post details, see Standard Plan "Beam Guardrail Posts and Blocks".
- Eight $\frac{5}{8}$ " x 1 $\frac{1}{2}$ " machine bolts with hex nut and washer. Place washer on face side of rail.
- Outside nut shall be torqued against inside nut a minimum of 100 ft-lbs.
- Toenail bearing plate with 10d nail at corners to prevent turning.
- Anchor pay limit does not apply when anchor is included in a Beam Guardrail Terminal.

BEAM GUARDRAIL ANCHOR TYPE 1



EXPIRES MAY 3, 1998

NOTES: THIS IS AN E-FILED DOCUMENT. IT IS NOT A LEGAL DOCUMENT. THE ORIGINAL DOCUMENT MUST BE FILED WITH THE ENGINEER AND APPROVED FOR PUBLICATION. IT IS THE RESPONSIBILITY OF THE ENGINEER TO OBTAIN THE NECESSARY PERMISSIONS. A COPY WILL BE RETURNED UPON REQUEST.

STANDARD PLAN C-6

APPROVED FOR PUBLICATION

Donald K. Nelson

STATE DESIGN ENGINEER

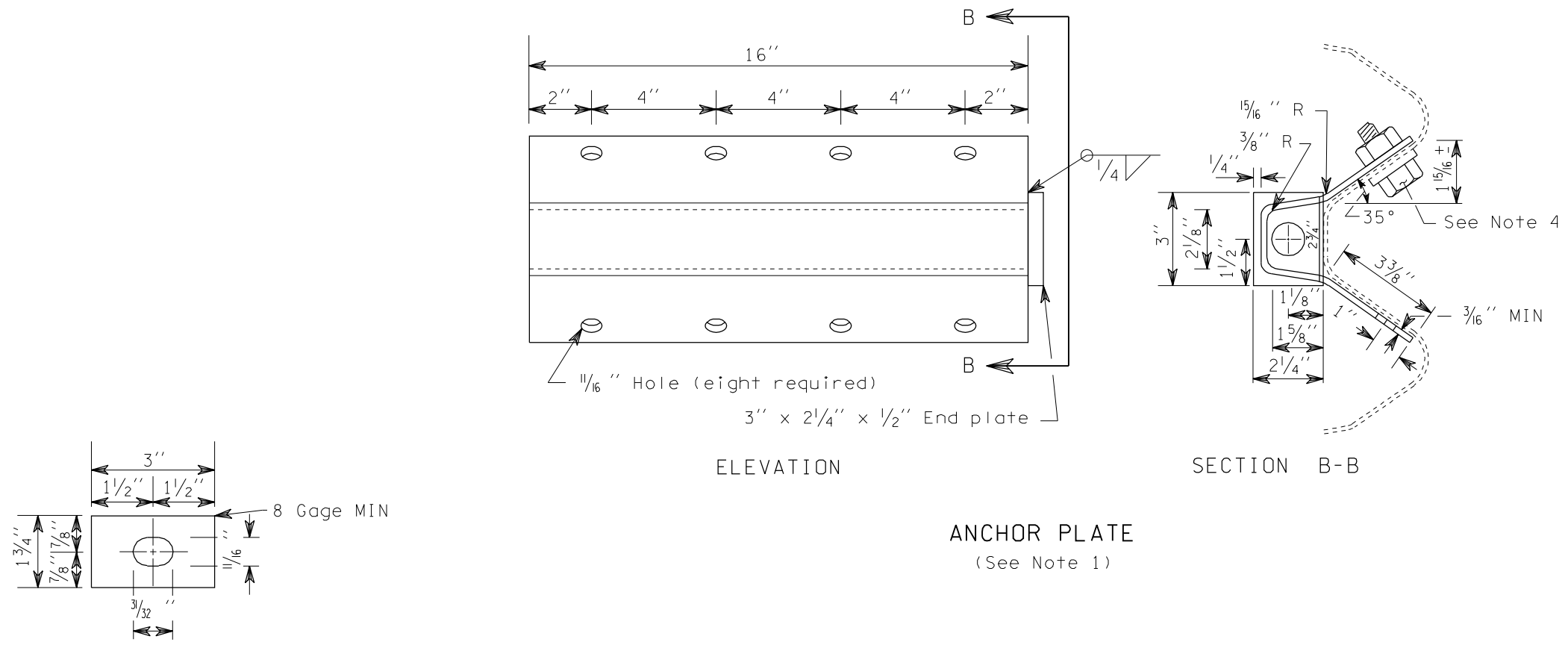
05/30/97

DATE

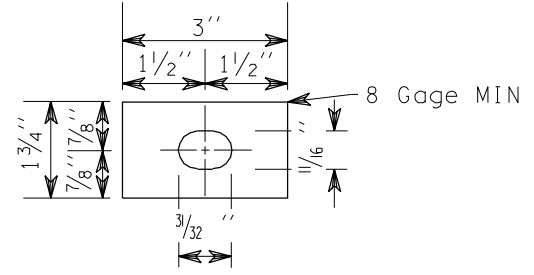
WASHINGTON STATE DEPARTMENT OF TRANSPORTATION
OLYMPIA, WASHINGTON



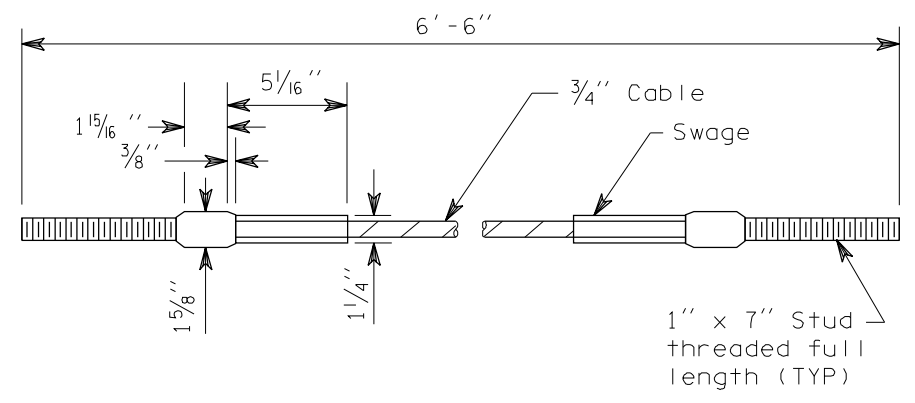
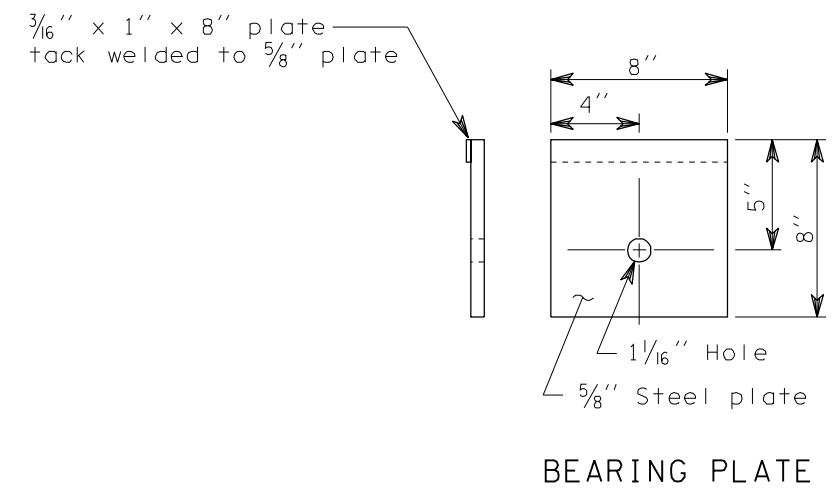
Sheet 1 of 2 Sheets



ANCHOR PLATE
(See Note 1)



ANCHOR RAIL WASHER



ANCHOR CABLE

BEAM GUARDRAIL ANCHOR
TYPE 1



NOTES: THIS IS AN IN PART LEGAL ENGINEERING DOCUMENTARY. IT IS NOT TO BE REPRODUCED OR TRANSMITTED IN ANY FORM OR BY ANY MEANS, ELECTRONIC OR MECHANICAL, INCLUDING PHOTOCOPYING, RECORDING, OR BY ANY INFORMATION STORAGE AND RETRIEVAL SYSTEM, WITHOUT THE WRITTEN PERMISSION OF THE ENGINEER. A COPY WILL BE SUPPLIED UPON REQUEST.

STANDARD PLAN C-6

APPROVED FOR PUBLICATION

Donald K. Nelson 05/30/97
STATE DESIGN ENGINEER DATE

WASHINGTON STATE DEPARTMENT OF TRANSPORTATION
OLYMPIA, WASHINGTON

Sheet 2 of 2 Sheets