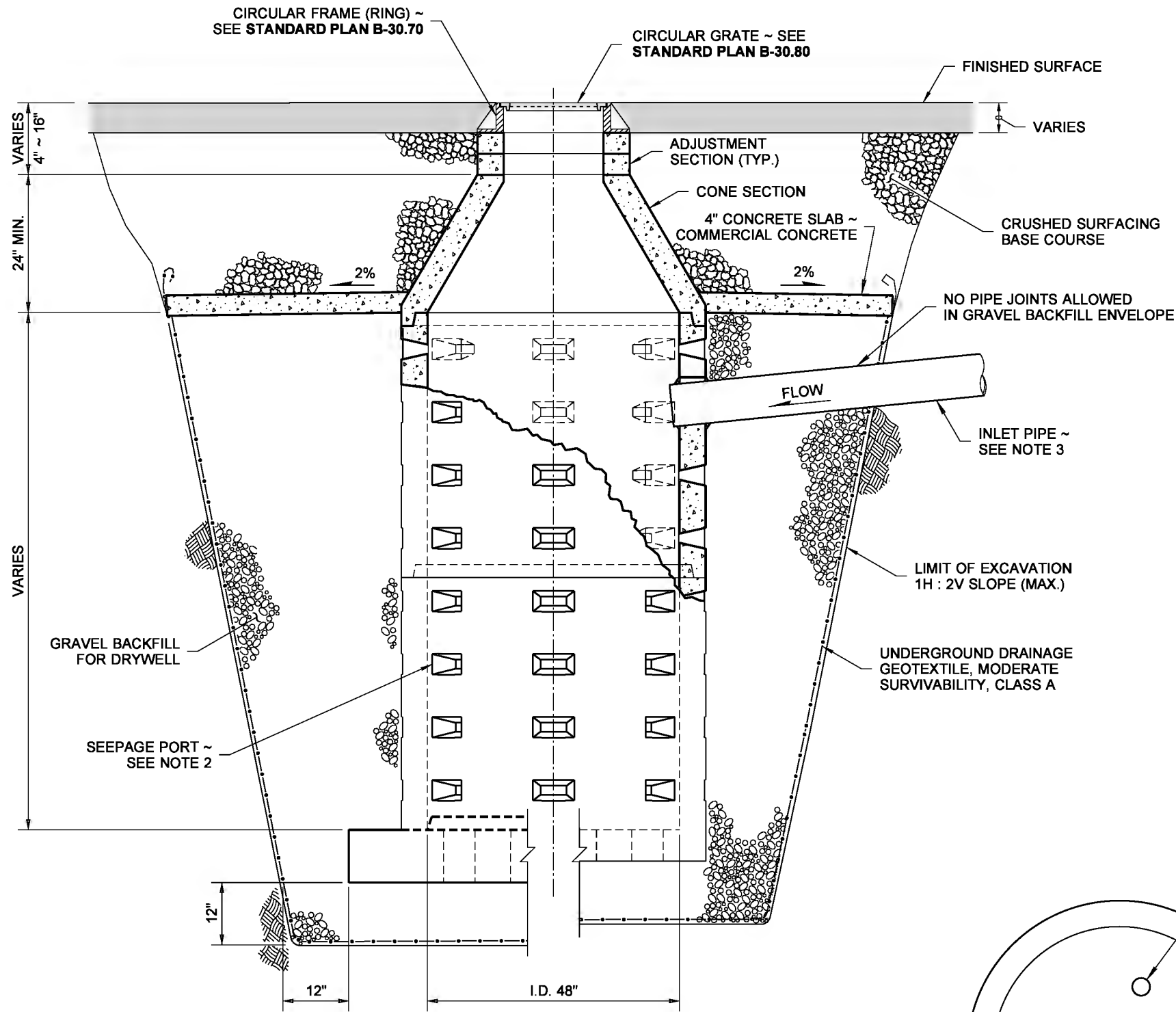


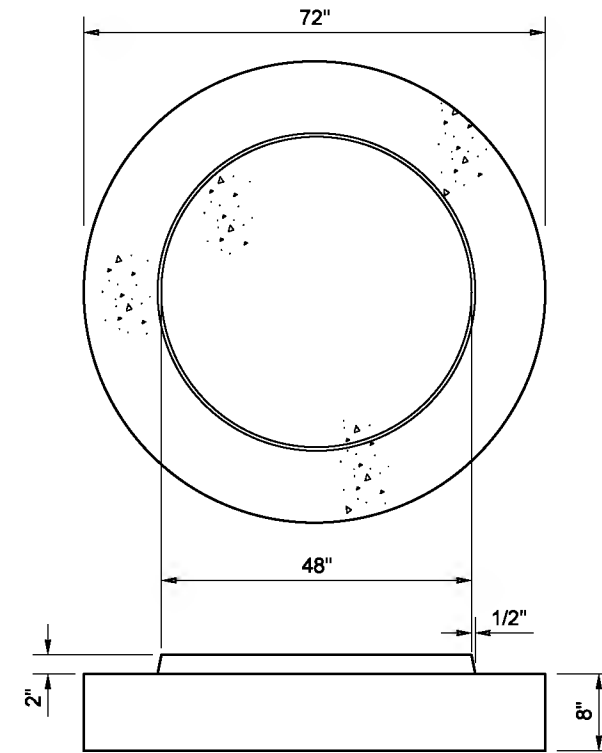
DRAWN BY: FERN LIDDELL



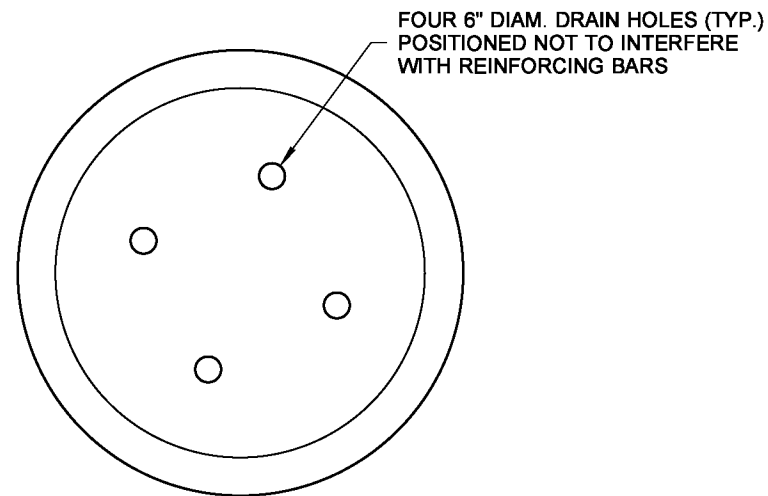
ALTERNATIVE FOOTING
PRECAST

INTEGRAL BASE
PRECAST WITH RISER

CUTAWAY ELEVATION VIEW



ALTERNATIVE PRECAST
FOOTING DETAIL



INTEGRAL BASE DETAIL

NOTES

1. Precast concrete cone sections may be eccentric or concentric.
2. Seepage port orientation varies among manufacturers.
3. Connect inlet pipe to structure using precast hole or core drilled hole.
4. For depths over 16' - 2" use 72" x 8" Alternative Precast Footing.
5. When necessary, knockouts on precast cone, drywell base and riser sections shall have a wall thickness of 1 1/2" minimum and 2" maximum.



NOTE: THIS PLAN IS NOT A LEGAL ENGINEERING DOCUMENT UNTIL IT IS SIGNED AND SEALED BY THE ENGINEER. THE ENGINEER'S SIGNATURE AND SEAL MUST BE FILED AT THE WASHINGTON STATE DEPARTMENT OF TRANSPORTATION. A COPY MAY BE OBTAINED UPON REQUEST.

**DRYWELL TYPE 2
(WITH PIPE INLET)
STANDARD PLAN B-20.40-03**

SHEET 1 OF 1 SHEET

APPROVED FOR PUBLICATION

Pasco Bakotich III 03-16-12

STATE DESIGN ENGINEER DATE

