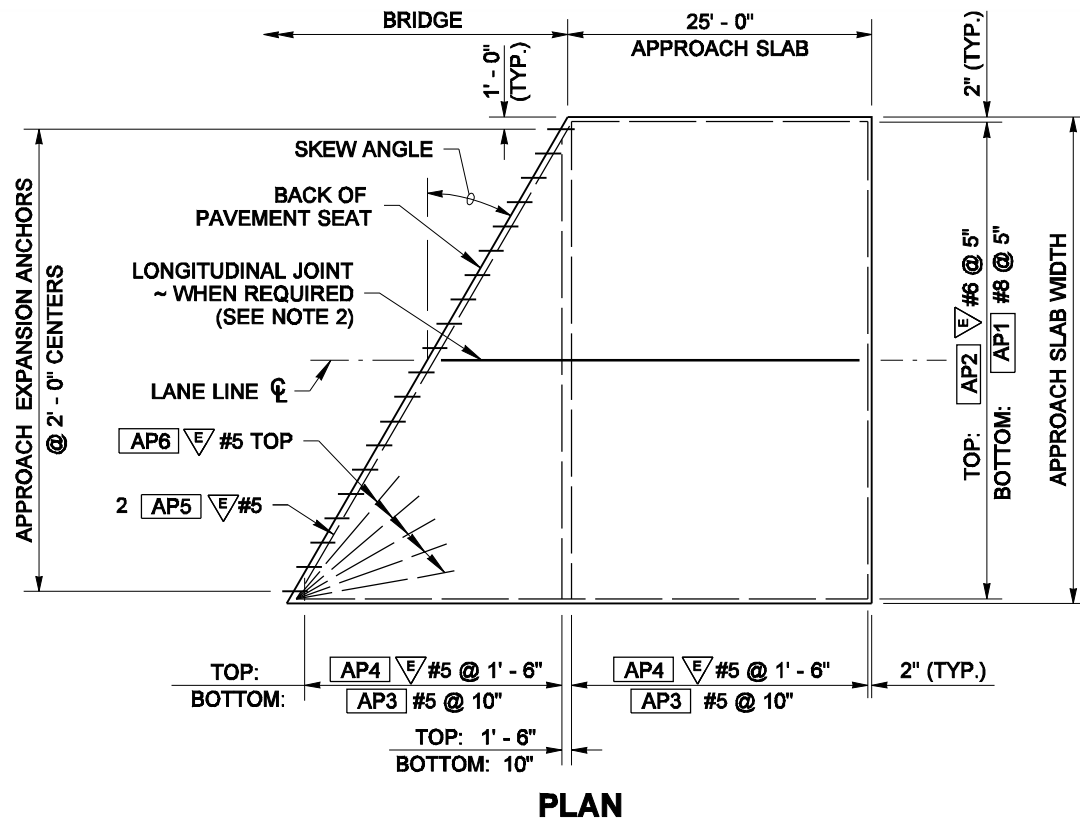
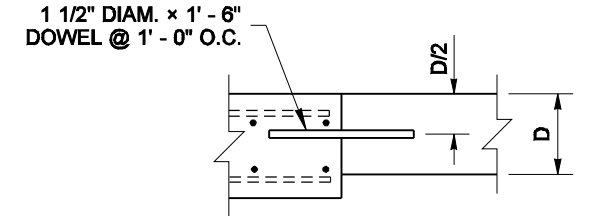


DRAWN BY: FERN LIDDELL



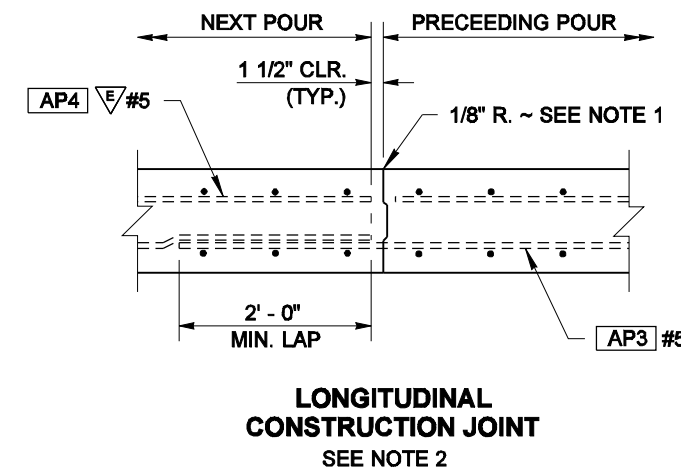
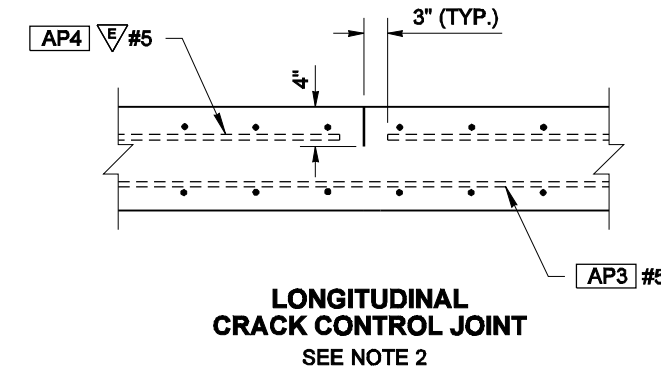
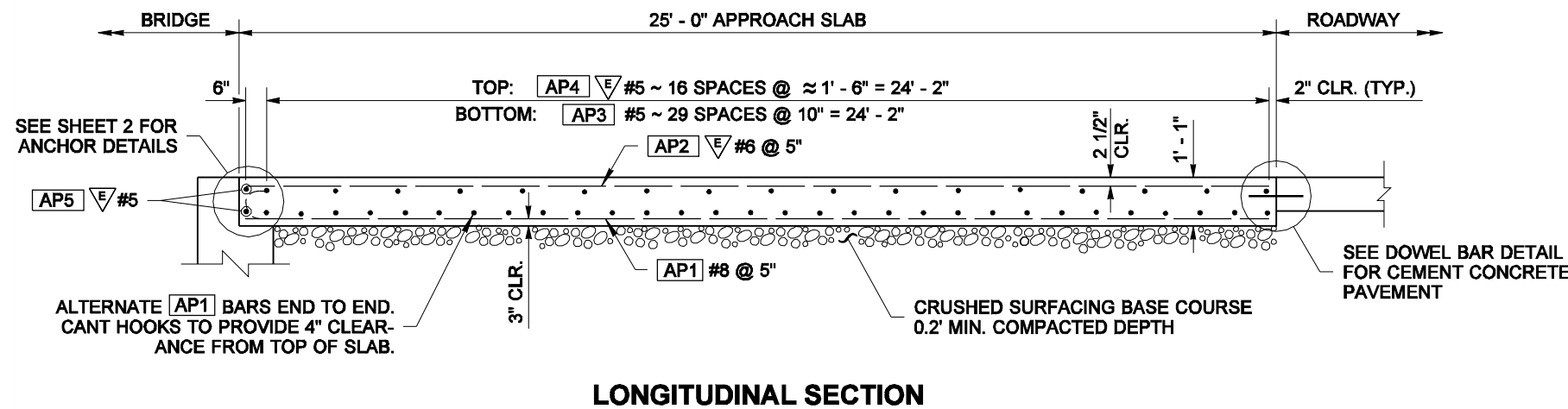
NOTES

- All edges of the approach slab shall have 1/2" radii except the longitudinal edge of the preceding pour of a LONGITUDINAL CONSTRUCTION JOINT.
- Longitudinal joints shall be placed on lane lines and shall be constructed and sealed in accordance with Standard Specification Section 5-05.3(8). Joints may be either a sawcut crack control joint or a construction joint. Sawcut joints shall terminate 1' - 0" before reaching edge of slab and must be saw cut as soon as possible after placement of concrete.
 - (A) Approach slabs less than 40' wide – no joint is required.
 - (B) Approach slabs wider than 40' – one or more joints are required to divide the slab into approximately 24' wide sections.



INSERT DOWELS PARALLEL TO CENTER LINE ALONG TRANSVERSE CONSTRUCTION JOINT.

DOWEL BAR DETAIL FOR CEMENT CONCRETE PAVEMENT



FOR LOCAL AGENCY USE ONLY



EXPIRES AUGUST 23, 2008

NOTE: THIS PLAN IS NOT A LEGAL ENGINEERING DOCUMENT UNLESS IT IS SIGNED BY THE ENGINEER AND APPROVED FOR PUBLICATION. IT IS KEPT ON FILE AT THE WASHINGTON STATE DEPARTMENT OF TRANSPORTATION. A COPY MAY BE OBTAINED UPON REQUEST.

BAR LIST FOR STANDARD 10' x 25' APP. SLAB QUANTITY MODULE					APPROXIMATE QUANTITIES (PER SY) FOR SLAB (BASED ON QUANTITY MODULE)	
MARK	LOCATION	SIZE	LENGTH	QTY.		
AP1	LONGITUDINAL BOTTOM	#8	25' - 7"	24	SLAB EPOXY COATED REINFORCING BARS (TOP MAT)	38.52 LBS/SY
AP2	LONGITUDINAL TOP	#6	24' - 8"	24	SLAB REINFORCING BARS (BOTTOM MAT)	72.38 LBS/SY
AP3	TRANSVERSE BOTTOM	#5	9' - 8"	30	CONCRETE (CU. YDS.)	0.361 CY/SY
AP4	TRANSVERSE TOP	#5	9' - 8"	17	APPROACH ANCHORS AND PCC ROADWAY DOWELS	AS REQUIRED
AP5	TRANSVERSE END BAR	#5	9' - 8"	2	10 - AP6 #5 (IF REQUIRED)	105 LBS.
BENDING DETAIL FOR QUANTITIES						
(ALL DIMENSIONS ARE OUT TO OUT)						
<p>ALL REINFORCING BARS SHOWN ON THIS SHEET SHALL BE AASHTO M-31, UNLESS NOTED OTHERWISE.</p> <p>#5 = EPOXY COATED REINFORCING STEEL</p>						

BRIDGE APPROACH SLAB

STANDARD PLAN A-40.50-00

SHEET 1 OF 2 SHEETS

APPROVED FOR PUBLICATION

Pasco Bakotich III 11-8-07

STATE DESIGN ENGINEER DATE





NOTE: THIS PLAN IS NOT A LEGAL ENGINEERING DOCUMENT
UNTIL AN ELECTRONIC SIGNATURE, THE ORIGINAL, SIGNED BY
THE ENGINEER AND APPROVED FOR PUBLICATION, IS KEPT ON
FILE AT THE WASHINGTON STATE DEPARTMENT OF TRANS-
PORTATION. A COPY MAY BE OBTAINED UPON REQUEST.