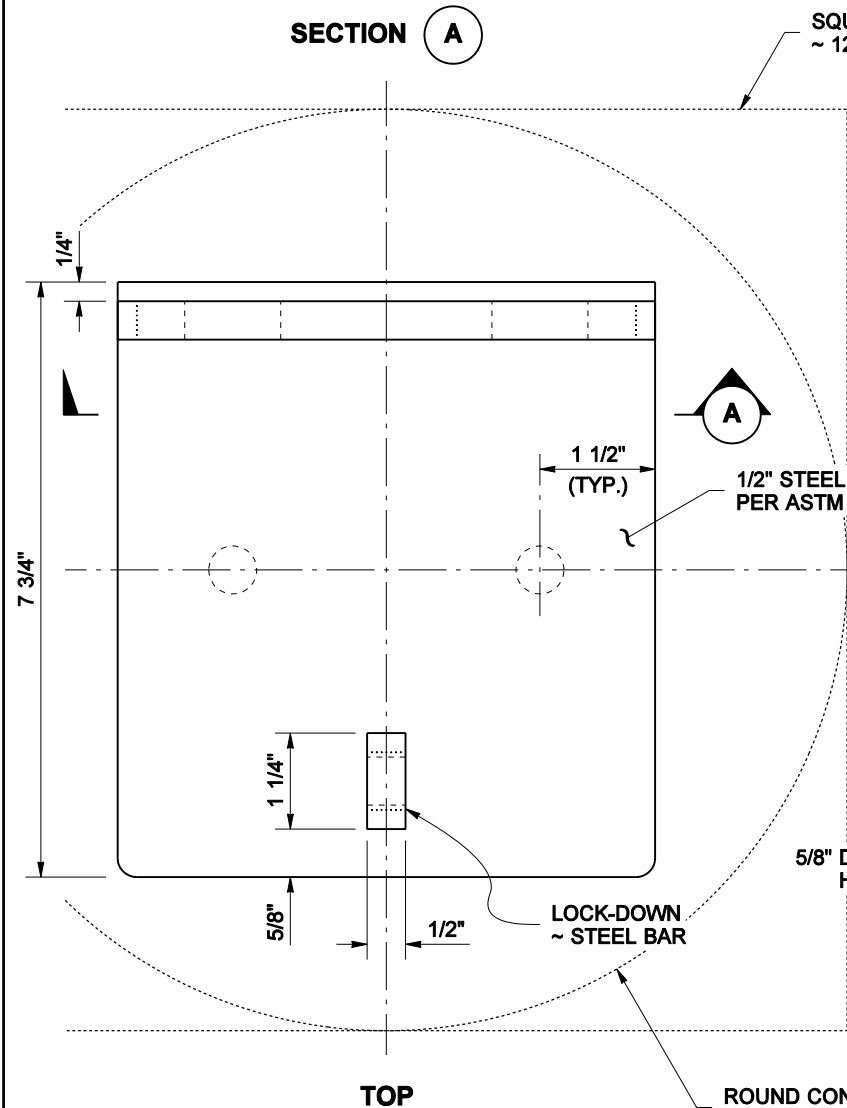
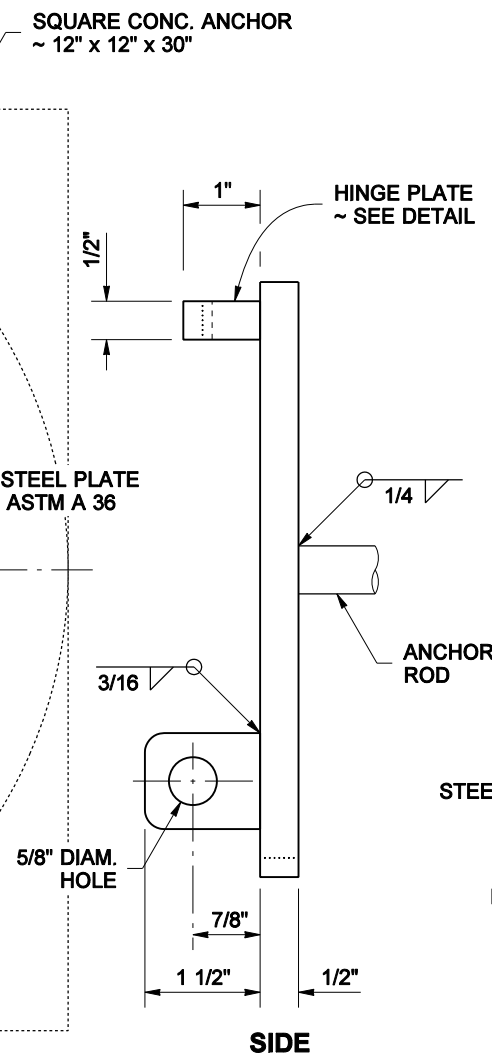


**NOTES**

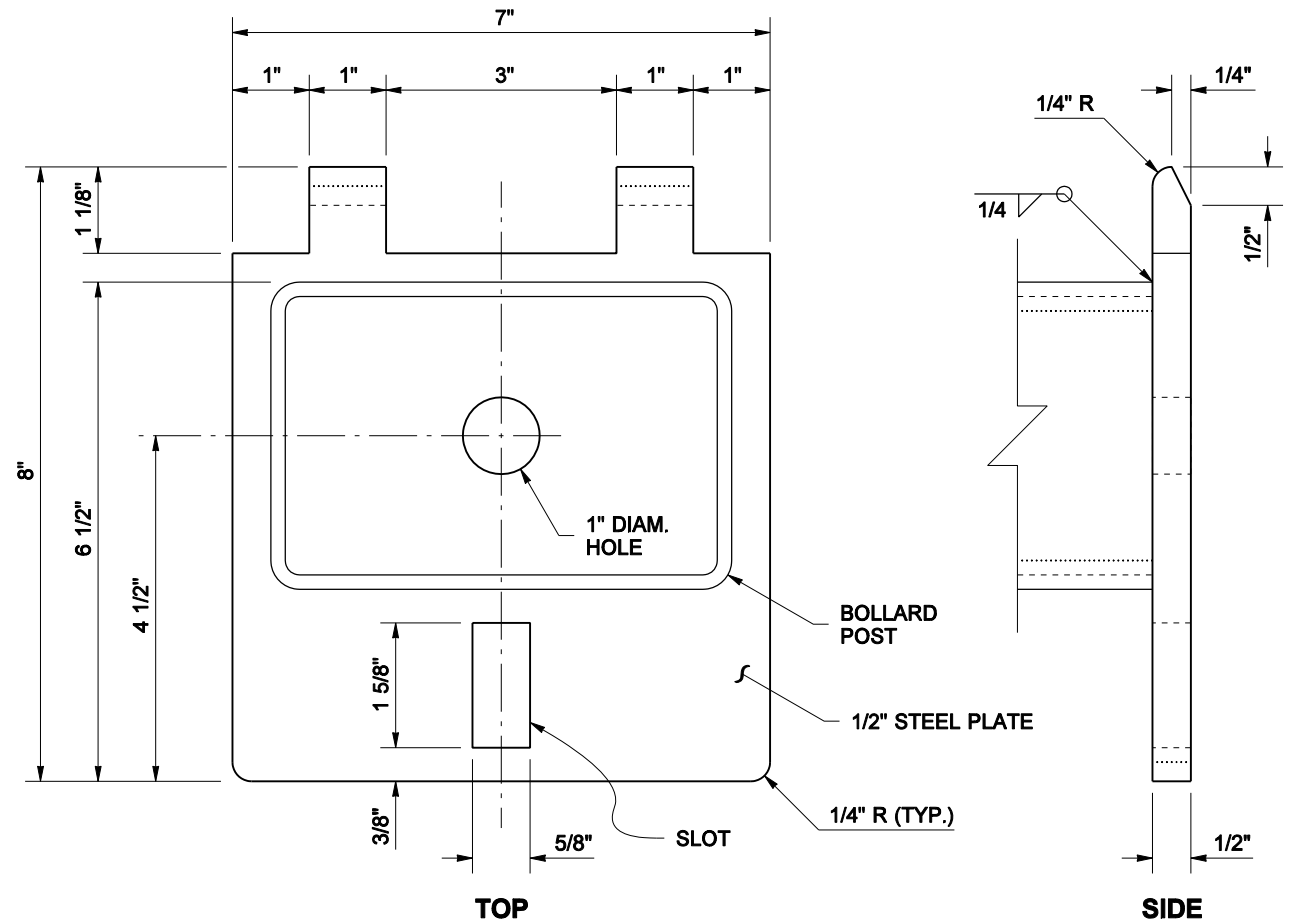
1. Hot dip galvanize assemblies after fabrication.
2. If manufacturers dimensions vary from this plan, Submission of shop drawings for approval is required.



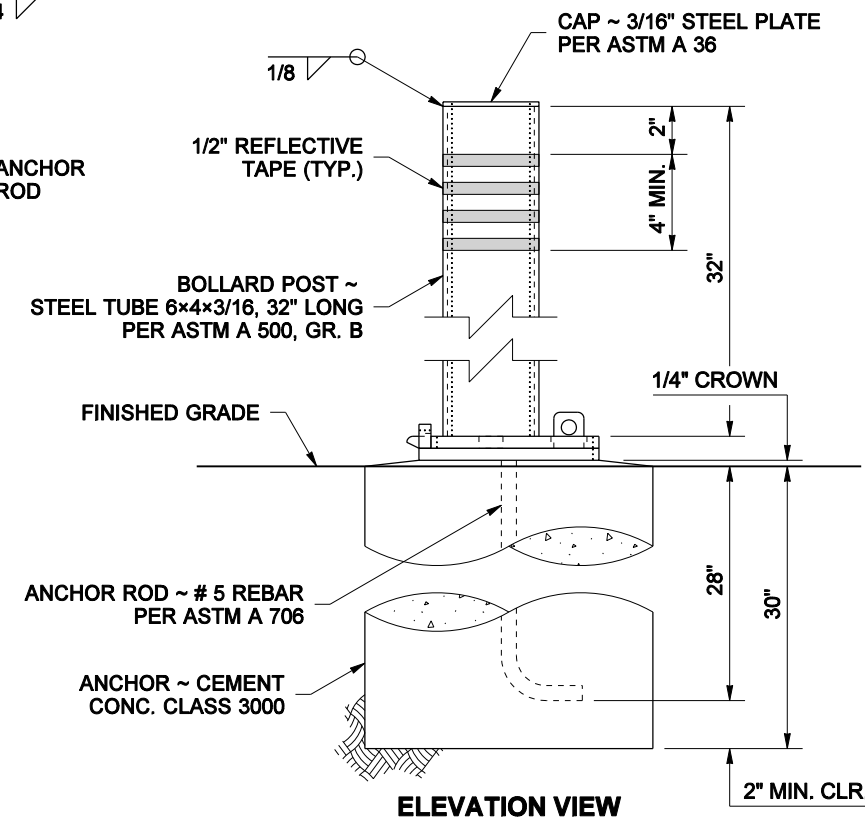
**TOP ANCHOR PLATE**



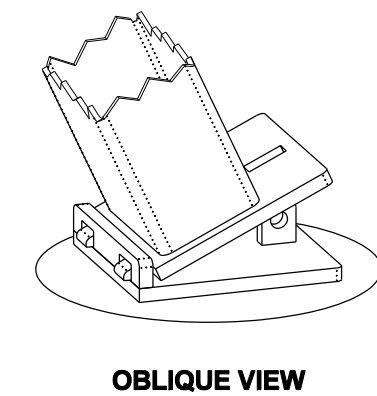
**SIDE**



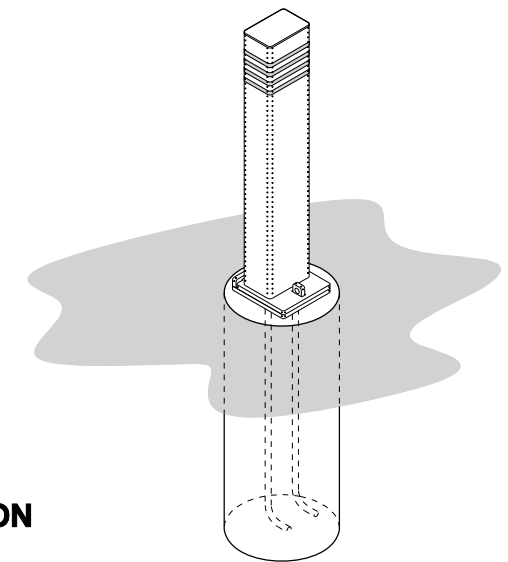
**POST PLATE**



**ELEVATION VIEW**



**OBLIQUE VIEW**



**ISOMETRIC VIEW**

FILE NAME	S:\Design R P& S\4-Standards\2-Plan Sheet Library\04-Roadside Devel(RD)\RD-I4\RD-I4.dgn	REGION NO.	STATE	FED. AID PROJ. NO.	Washington State Department of Transportation	PLOT 1 RD-14
TIME	4:39:36 PM	10	WASH			
DATE	12/15/2010	JOB NUMBER			SHEET OF SHEETS	
PLOTTED BY	berensb	CONTRACT NO.	LOCATION NO.			
DESIGNED BY	L. Hinson				<b>BOLLARD TYPE 3 DETAILS</b>	
ENTERED BY	M. Sujka					
CHECKED BY						
PROJ. ENGR.						
REGIONAL ADM.		REVISION	DATE	BY	P.E. STAMP BOX	P.E. STAMP BOX