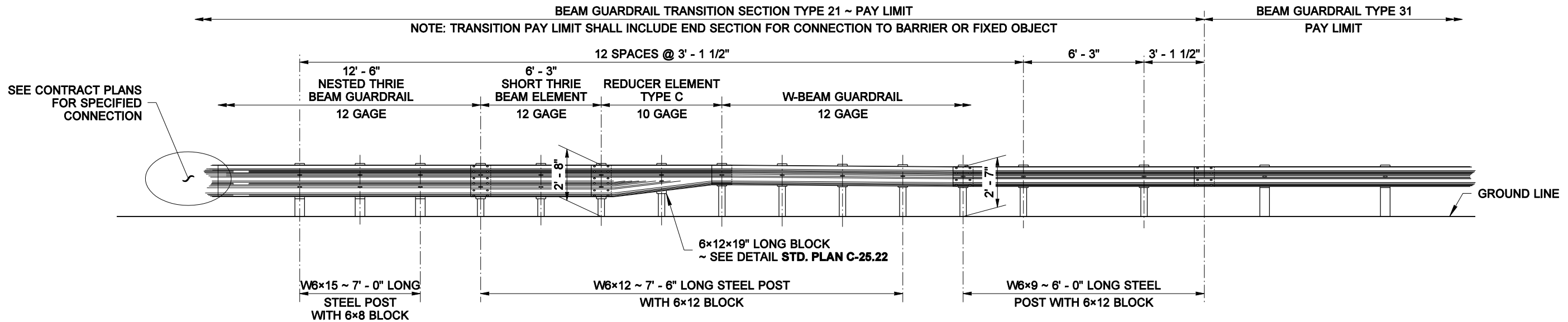
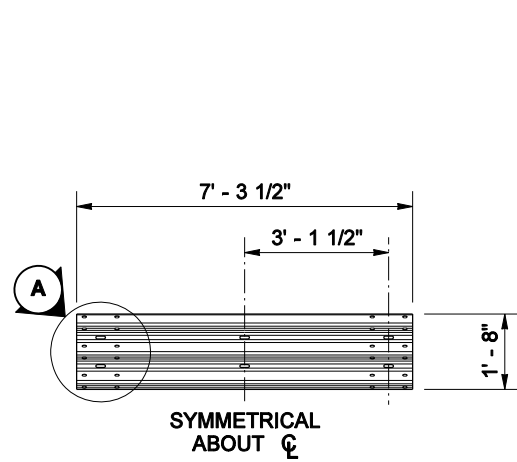


NOTES

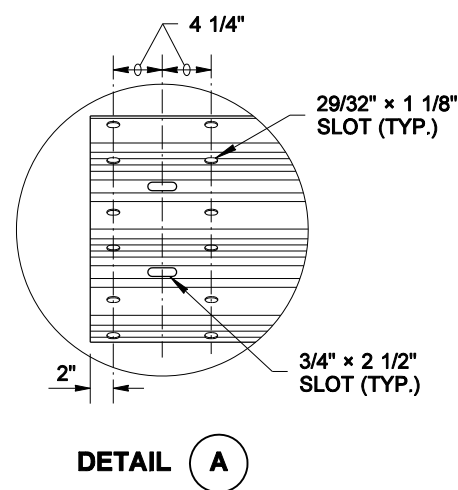
1. This guardrail transition is for connection to a vertical concrete shape, a single slope, or a safety shape barrier. The toe of the single slope and the safety shaped barrier shall be tapered or the barrier blocked out so that the toe of the barrier does not project past the face of the approach guardrail.
2. See **Standard Plan C-5** for details regarding connection to Bridge rail or traffic barrier.
3. For details of typical components, see **Standard Plans C-1b and C-28.40**.



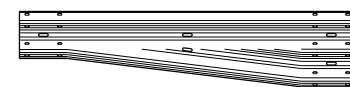
ELEVATION VIEW



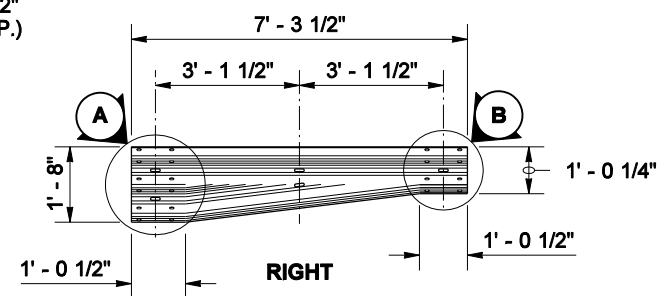
SHORT THRIE BEAM ELEMENT



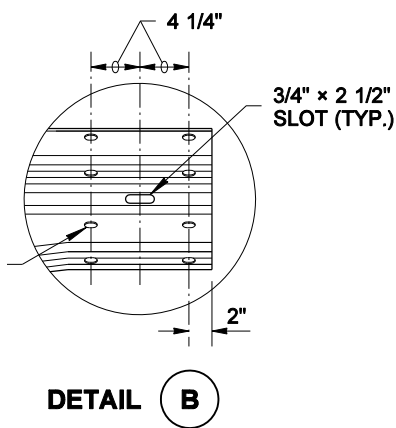
DETAIL A



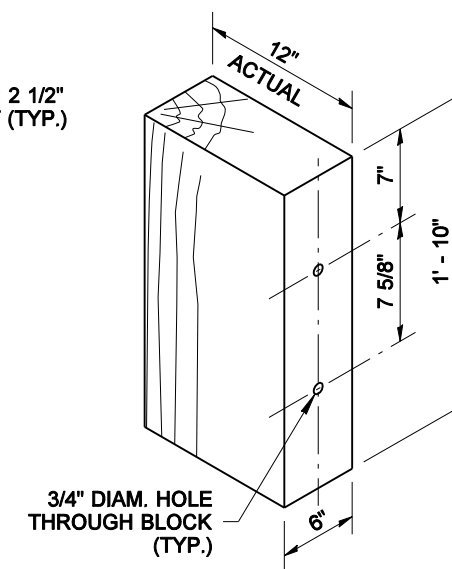
LEFT (MIRROR OF RIGHT)



REDUCER ELEMENT TYPE C



DETAIL B



THRIE BEAM WOOD BLOCK



NOTE: THIS PLAN IS NOT A LEGAL ENGINEERING DOCUMENT. THE ENGINEER'S SIGNATURE, SEAL, AND EXPIRATION DATE ARE REQUIRED FOR THE PLAN TO BE VALID. THE ENGINEER'S SIGNATURE AND EXPIRATION DATE ARE REQUIRED FOR THE PLAN TO BE VALID. THE ENGINEER'S SIGNATURE AND EXPIRATION DATE ARE REQUIRED FOR THE PLAN TO BE VALID. A COPY MAY BE OBTAINED UPON REQUEST.

**BEAM GUARDRAIL (TYPE 31)
TRANSITION SECTION
TYPE 21
STANDARD PLAN C-25.20-04**

SHEET 1 OF 1 SHEET

APPROVED FOR PUBLICATION

Pasco Bakotich III 10-14-09
STATE DESIGN ENGINEER DATE

