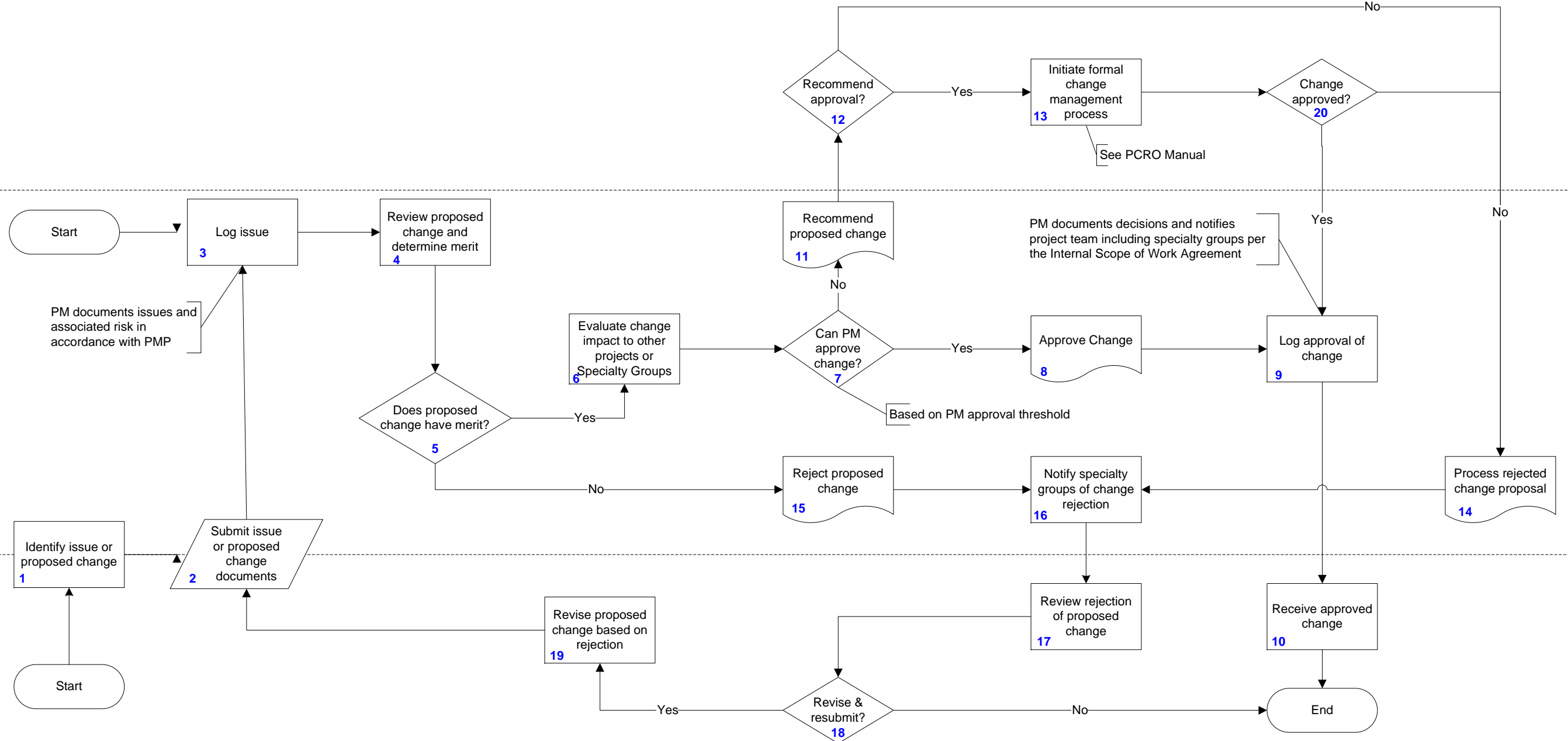


Regional Management
Project Engineer/Project Manager (PE/PM)
Specialty Groups

This process is to adjust a internal scope of work agreement with a specialty group. The agreement terms take precedence.

Process map serves as an overview of the process. Refer to the applicable detailed process document for more information.



The identified roles are provided as a guide to assigning the tasks included in the PMRS processes and procedures. Each region has the flexibility to delegate the role of Project Manager (and other functions) to the appropriate functional level to meet project and project office needs and to accommodate current and planned organizational structures.

