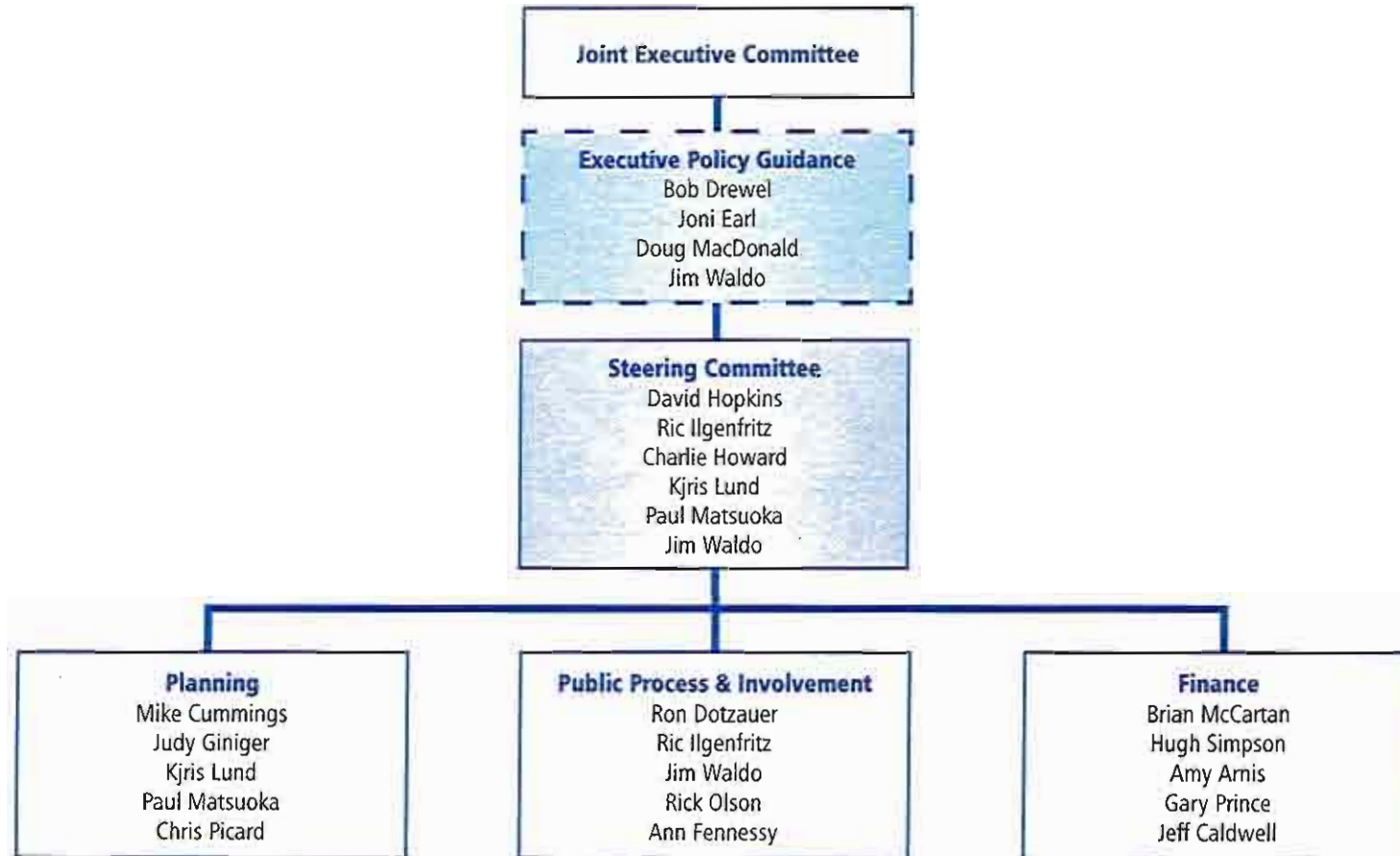


DRAFT

REGIONAL TRANSPORTATION COORDINATION CHART

RTID, PSRC, WSDOT, ST COORDINATION



Functions:

Joint Executive Committee will determine joint policy, set schedule and resolve key issues.

Executive Policy Guidance will review Steering Committee recommendation before taking to the Joint Executive Committee. Regular meetings are not intended.

Steering committee will ensure coordination through the day to day oversight and management of the overall plan development.

Planning will examine projects and overall cost review and ensure the creation of the plan meets statutory requirements.

Public Process & Involvement will develop and coordinate integrated outreach and involvement activities and will coordinate with other governments and the legislature.

Finance will review how to finance the plan by examining revenue sources, financial forecasts, project aging, bonding, etc.



John Ladenburg, Chair
Connie Marshall, Vice Chair
Mark Olson, Vice Chair
Fred Buller
Doug MacDonald
Greg Nickels
Larry Phillips
Aaron Reardon
Ron Sims

AGENDA

BOARD CHAIR

John W. Ladenburg
Pierce County Executive

BOARD VICE CHAIRS

Connie Marshall
Bellevue Councilmember

Mark Olson
Everett Councilmember

BOARD MEMBERS

Julie Anderson
Tacoma Councilmember

Mary-Alyce Burleigh
Kirkland Councilmember

Fred Butler
Issaquah Deputy Council President

Dow Constantine
King County Councilmember

Dave Enslow
Sumner Mayor

Doug MacDonald
*Washington State Department
of Transportation Secretary*

Richard Marin
Edmonds Councilmember

Richard McIver
Seattle Councilmember

Greg Nickels
Seattle Mayor

Julia Patterson
King County Councilmember

Larry Phillips
Chair, King County Council

Aaron Reardon
Snohomish County Executive

Ron Sims
King County Executive

Claudia Thomas
Lakewood Mayor

Pete von Reichbauer
Vice Chair, King County Council

CHIEF EXECUTIVE OFFICER

Joni Earl

BOARD ADMINISTRATOR

Marcia Walker

Sound Transit Executive Committee and Regional Transportation Investment District Executive Board Joint Meeting

Thursday, June 1, 2006
10:00 to 11:30 a.m.

Ruth Fisher Board Room
Union Station
401 South Jackson Street
Seattle, WA

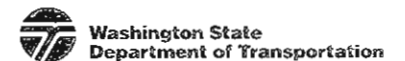
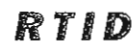
John Ladenburg, Sound Transit Executive Committee Chair, Presiding

1. Call to Order
2. Roll Call
3. Welcome and Introductory Comments
RTID Chair Bunney and ST Chair Ladenburg
4. Joint Ballot Measure and Plan Coordination Process
 - a. Legal Parameters
Ric Ilgenfritz, Sound Transit and Jim Waldo, RTID
 - b. Organizational Structure
Ric Ilgenfritz
 - c. Joint Schedule and Milestones
Jim Waldo
 - d. WSDOT Expert Review
David Hopkins, WSDOT
 - e. PSRC Regional Planning
Charlie Howard, PSRC
5. Discussion and Next Steps
6. Other Business
7. Next Meeting: To Be Determined
8. Adjourn

Integrated Regional Transportation Schedule



RTID = Regional Transportation Investment District
 PSRC = Puget Sound Regional Council
 ST = Sound Transit
 WSDOT = Washington State Department of Transportation

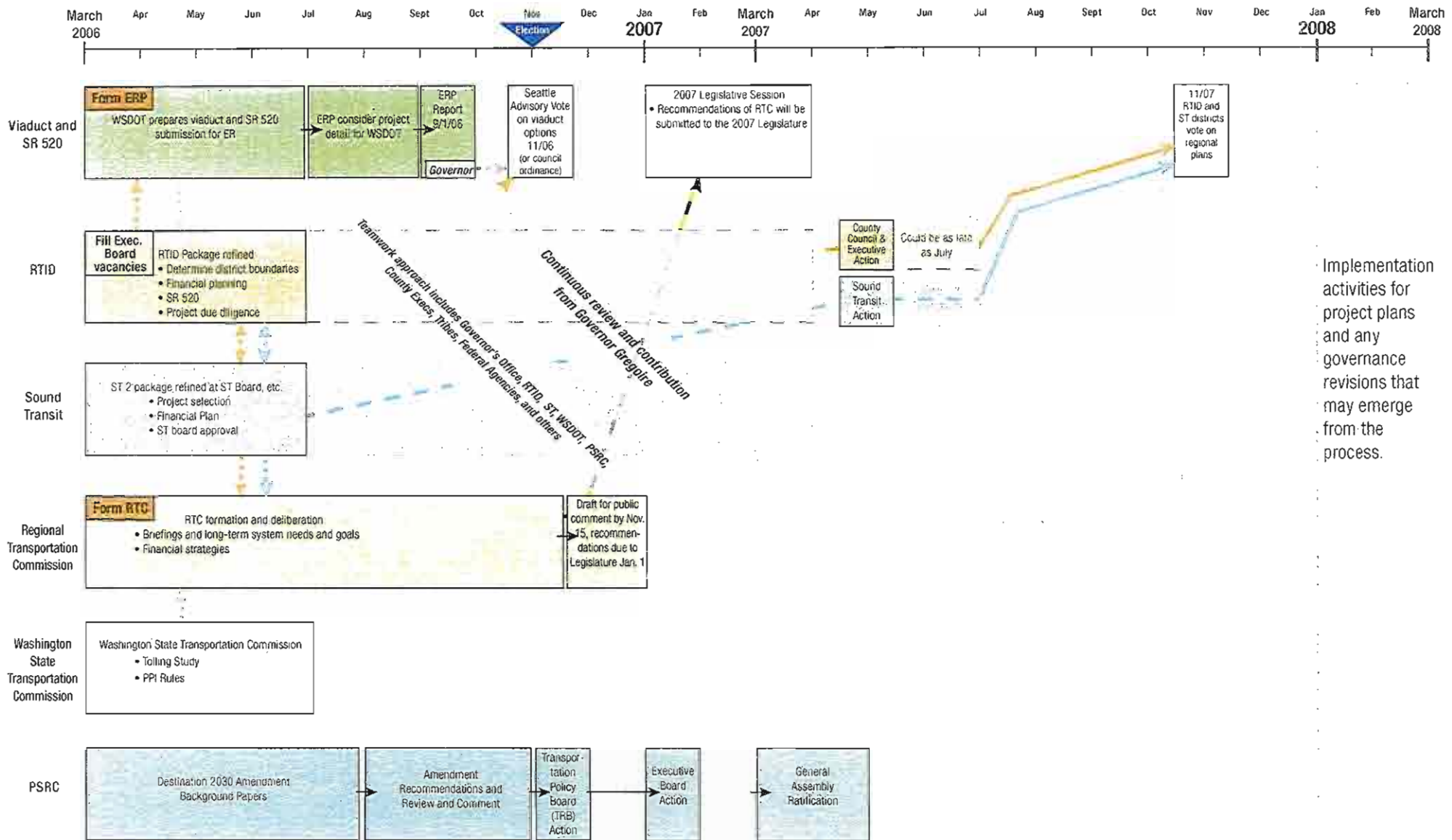


**March 15, 2006 DRAFT ----- HB 2871- Regional Transportation Legislation Overview-----
DRAFT**

Provisions	Issues/Questions	Possible ST Decisions/Actions
<p>Regional Transportation Commission</p> <ul style="list-style-type: none"> • 9 commissioners appointed by Governor by June 1, 2006 • All commissioners must be citizens who do not hold public office and 4 must be from party caucus lists • Governor appoints Chair • WSDOT Secretary is non-voting member • WSDOT provides staff support and may contract with others for staff support • Report must include recommendations on consolidated governance; improve coordination, coordinated planning and governance options one of which must be elected members. • Report must be published by November 15, 2006 with 15 day public comments. • Final report due to legislature by January 1, 2007. • State appropriated \$750,000 to fund commission • Final report due to legislature by January 1, 2007 and the Commission expires 	<ul style="list-style-type: none"> • Legislature may/may not adopt proposal in 07 • New entity could be formed during ballot campaign • Proposal could be submitted to voters 	<ul style="list-style-type: none"> • Identify list of proposed nominees • Submit to caucuses and governor • Staff commission proceedings/activities
<p>Ballot measures</p> <ul style="list-style-type: none"> • 2006 ballot prohibited for both RTA and RTID • RTA and RTID shall submit propositions for additional phases of system and finance plan at the 2007 general election on same ballot • Both RTA and RTID propositions must pass for each to be approved (contingent ballots) • RTID provided \$2.3 million in supplemental budget • Joint contingent ballot presumed "sunset" 	<ul style="list-style-type: none"> • RTA 2-step annexation • RTA Election costs • Other ballot proposals • Eyman initiative • True sunset? 	<ul style="list-style-type: none"> • Staff Support to RTID • Public Outreach • RTID's funding limitations?
<p>RTID boundaries</p> <ul style="list-style-type: none"> • Should be at least contiguous with RTA • RTID may annex additional areas in single ballot measure with plan and taxes; even if proposed taxes are different than existing RTID (Similar language was not included in RTA statute). • If RTID not formed by December 1, 2007, individual counties may assume its authority 	<ul style="list-style-type: none"> • Allows RTID annexations after initial plan approved • Newly annexed areas would not pay MVET, creating differential taxation 	<ul style="list-style-type: none"> • Annex new areas?
<p>Sub area equity</p> <ul style="list-style-type: none"> • Both RTA and RTID statutes amended to create permissive sub area equity principles whereby total combined revenues could be 	<ul style="list-style-type: none"> • Change ST Subarea equity policy? 	<ul style="list-style-type: none"> • Analyze financial projections/impact on projects • MOA with RTID required to pool revenue and

<p>used to achieve equity</p> <ul style="list-style-type: none"> Desired outcome is that East King gets more roads and Seattle gets more transit. Additional phases of RTA plan implementation may include sub area equity using anticipated combined RTA and RTID revenues by corridor and county, the degree to which revenues generated by county will benefit residents of that county, and when such benefits will accrue. Per an agreement with the RTA, the RTID may include the combined RTID and RTA revenues generated within a county to determine anticipated revenue by corridor and county to determine proportionate benefit to that county. Both RTA and RTID may continue to use the five sub areas established by RTA in May 1996 		Subarea equity?
<p>Taxes</p> <ul style="list-style-type: none"> No change to RTA taxes RTID sales tax reduced from 0.5% to 0.1% RTID MVET increased from 0.3% to 0.6% Not allowed local fuel tax option 	<ul style="list-style-type: none"> Will ST want differential taxation? King county transit proposal in 06? Other tools? 	
<p>Viaduct and SR 520</p> <ul style="list-style-type: none"> Expert Review Panel to be appointed for these two projects by chairs of transportation committees, WSDOT secretary and Governor Chair designated by Governor Using DEIS for each project, ERP must provide findings and recommendations to Governor and joint transportation committee by September 1, 2006 regarding finance plans for secured and anticipated funding sources and implementation plans considering state and local approvals and mitigation Governor must make a finding of whether each finance plan is feasible and sufficient to complete the projects as described in DEIS Seattle shall submit advisory ballot on the viaduct to city voters regarding tunnel or rebuild alternatives at 2006 general election, result is not binding “Nothing should be interpreted to delay construction.” 	<ul style="list-style-type: none"> Seattle advisory ballot in 06? Seattle funding proposition in 06? 520 Draft EIS due in May No deadline for Governor’s feasibility determination 	
<p>Transportation Benefit Districts</p> <ul style="list-style-type: none"> Cities and counties may establish after Dec 1, 2007 if RTID fails 		
<p>WSDOT Roles</p> <ul style="list-style-type: none"> Secretary serves on Governance Commission, ST Board, RTID 		

<p>and PSRC</p> <ul style="list-style-type: none"> • Department staffs Commission 		
<p>Role of County Executives</p> <ul style="list-style-type: none"> • Approval of ordinances for RTID participation and boundaries 		
<p>RTID Transit Operations</p> <ul style="list-style-type: none"> • Construction mitigation strategies may include funding for increased transit • Prior to construction, corridor mitigation plans must be developed with RTA, WSDOT and local transits • RTID must review transit investments to determine if funding for these operations should continue after construction period 	<ul style="list-style-type: none"> • Commission or successor could continue after construction is completed 	<ul style="list-style-type: none"> • MOA with RTID?



Ongoing and Continuous Activities

Briefings to State Legislators, Members of Congress, and Staff

Overall strategic planning and coordination

Media Communication Strategies and Tasks

Understanding of activities likely to surround "campaigns" in 2006 and 2007