



Please Note:

To ensure both current and historical interchange system information is available to all who utilize the Interchange Drawing Viewer, some of the Interchange Drawing PDF files will display with hand-sketched updates. New hand-sketched files will be added when updated information is received through construction and maintenance channels. New CAD drawings will be added as they are completed. There is currently a five-year backlog on updating the CAD drawings.

If you have questions about updates to the Interchange Drawing, the hand-sketched versions of the drawings, or the Interchange Viewer Web App please email TransportationGISDataSteward@WSDOT.WA.GOV with Interchange Drawing Feedback or Inquiry in the subject line.

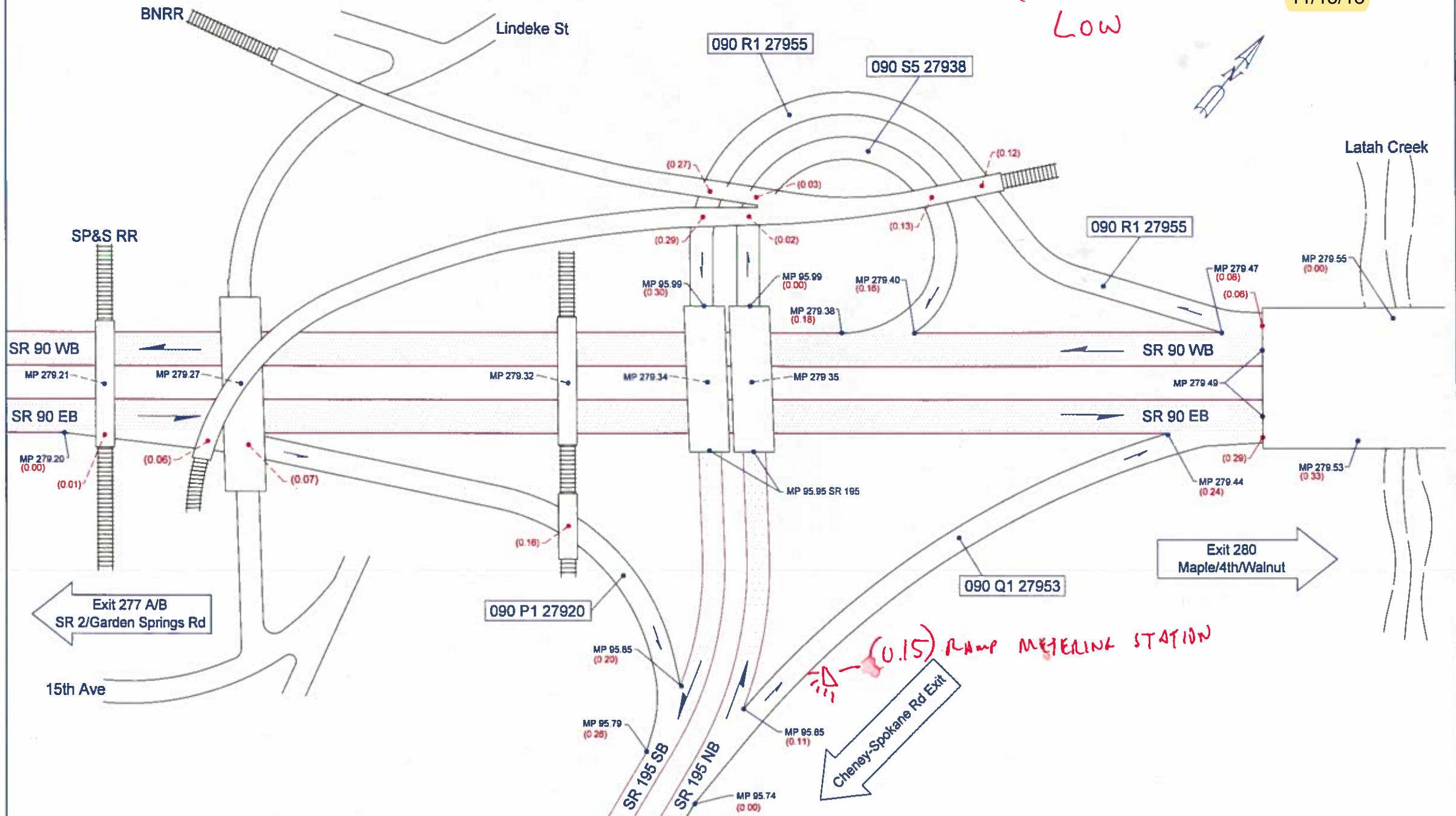
Continue to the following pages to see the current and historical interchange configurations.

Did you know...?

- You can download the PDF file to your computer.
- Once downloaded, you can access the layers that compose each drawing through Adobe Acrobat Reader or Pro. NOTE: Layers are not available on hand-sketches.
- [How to download and view Interchange Drawing layers in Adobe Acrobat \(PDF 115KB\)](#)

11-15-18
Low

Effective date:
11/15/18



Not To Scale

01/19/2016

WAK

WSDOT EASTERN REGION

SPOKANE, SPOKANE COUNTY

JUNCTION SR 195

SR 90 - EXIT 279

