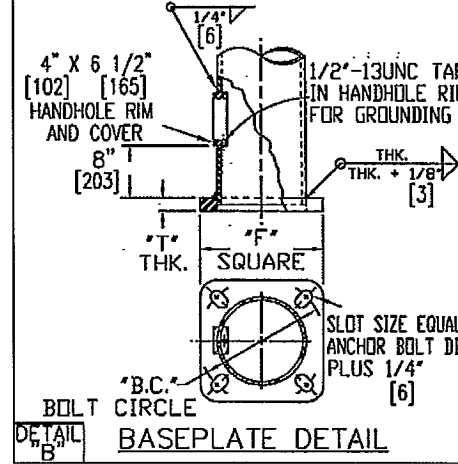
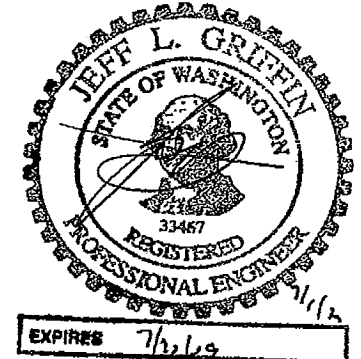
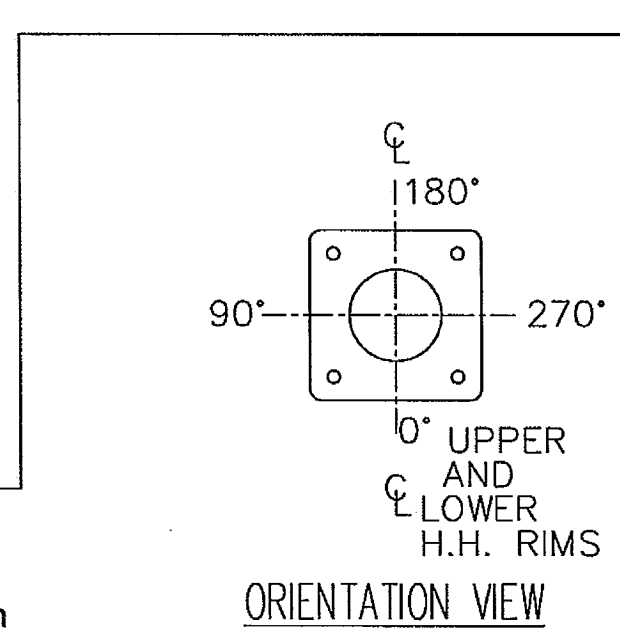
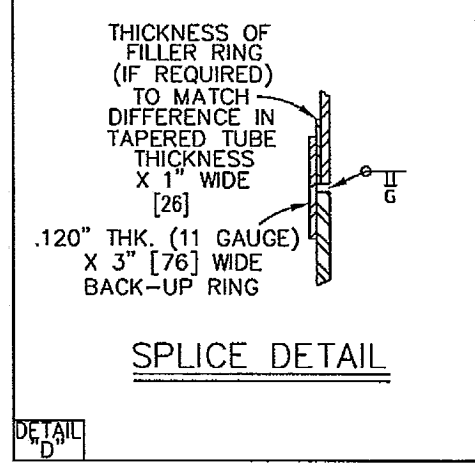
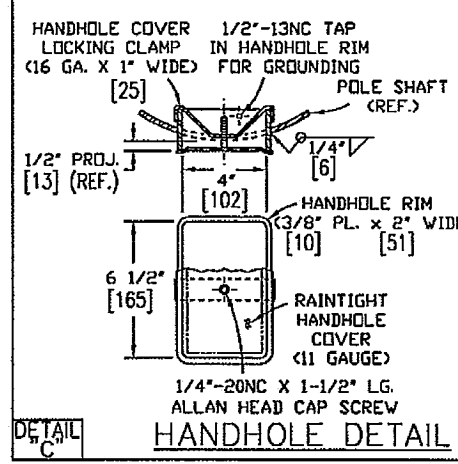


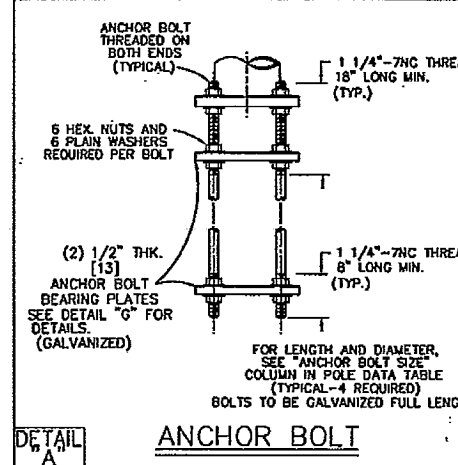
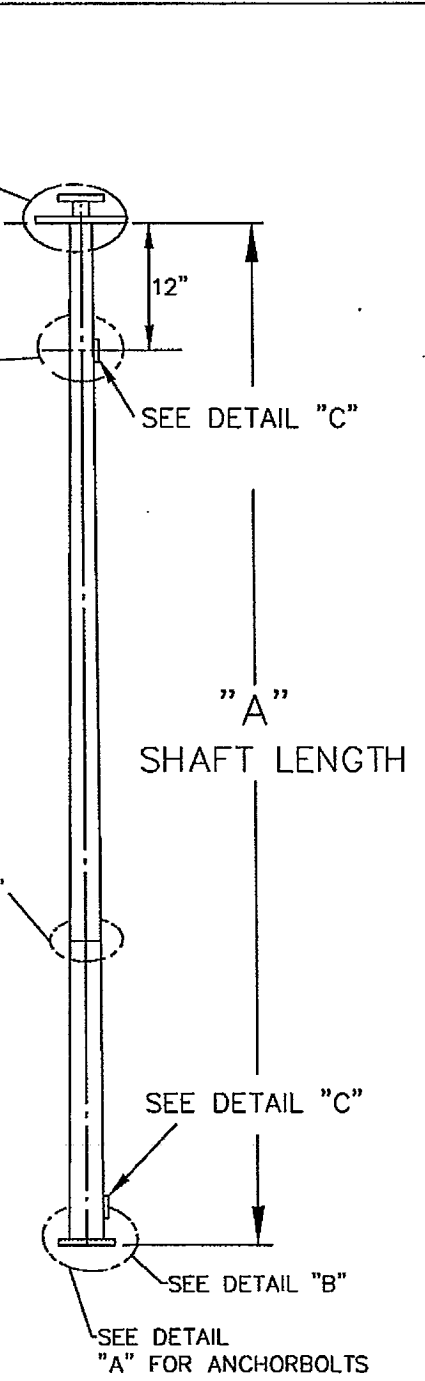
NOTE: PLEASE VERIFY POLE TOP CAMERA PLATE, DETAIL "F" TO ASSURE THE DEMENSIONS OF THE PLATE, BOLT CIRCLE AND BOLTS SLOTS ARE ADEQUATE FOR THE REQUIRED CAMERA PIROR TO RELEASING THE PROJECT FOR MANUFACTURING.



APPROVED
 Manufacturer's Pole Plan
 Approved For Listing As A
 Pre-Approved Drawing
 WSDOT Bridge & Structures Office
 By GB Date 7/28/08

-POLE DATA-

POLE NO.	POLE QTY.	POLE DESCRIPTION	SHAFT LENGTH "A"	SHAFT DIMENSIONS TOP O.D. X BASE O.D.	MATERIAL BREAKDOWN				BASE SQ. "F"	BASE BOLT CIRCLE "B.C."	BASE THK. "T"	ANCHOR BOLT or ROD DIMENSIONS	35 MPH DEFLECTION (IN.)
					120" THK.	179" THK.	239" THK.	3125" THK.					
		CCTV20	20'-0" [6.1]	9 3/8" X 12 1/8" [238 X 308]	-	20'-0" [6.1]	-	-	25"	25 1/2"	1 1/4"	1 1/4" x 60"	0.07" [1.78]
		CCTV25	25'-0" [7.6]	9 3/8" X 12 13/16" [238 X 325]	-	25'-0" [7.6]	-	-	25"	25 1/2"	1 1/4"	1 1/4" x 60"	0.12" [3.05]
		CCTV30	30'-0" [9.1]	9 3/8" X 13 1/2" [238 X 343]	-	30'-0" [9.1]	-	-	25"	25 1/2"	1 1/4"	1 1/4" x 60"	0.18" [4.57]
		CCTV35	35'-0" [10.7]	9 3/8" X 14 3/16" [238 X 360]	-	35'-0" [10.7]	-	-	25"	25 1/2"	1 1/4"	1 1/4" x 60"	0.26" [6.60]
		CCTV40	40'-0" [12.2]	9 3/8" X 14 7/8" [238 X 378]	-	20'-0" [6.1]	20'-0" [6.1]	-	25"	25 1/2"	1 1/4"	1 1/4" x 60"	0.35" [8.89]
		CCTV45	45'-0" [13.7]	10 1/16" X 16 1/4" [256 X 413]	-	-	45'-0" [13.7]	-	25"	25 1/2"	1 1/4"	1 1/4" x 60"	0.29" [7.37]
		CCTV50	50'-0" [15.2]	10 3/4" X 17 5/8" [273 X 448]	-	-	50'-0" [15.2]	-	25"	25 1/2"	1 1/4"	1 1/4" x 60"	0.31" [7.87]



--GENERAL NOTES--

MATERIAL SPECIFICATIONS	
SHAFT	STEEL OF 48,000 P.S.I. MINIMUM YIELD AFTER FABRICATION ASTM A-572-GR.50 ASTM A-595 GR. A ASTM A-709-GR.50 ASTM A-1008-GR.50 ASTM A-1011-GR.50 THE ABOVE LISTED MATERIALS ARE USED BASED UPON AVAILABILITY AT TIME OF PURCHASE OF MATERIAL LOTS FOR PRODUCING POLE AND ARM SHAFTS
BASE PLATE AND FLANGES	ASTM A-36 STEEL
PIPE	ASTM A-53 GRADE "B" OR ASTM A-500 GRADE "B"
ANCHOR BOLTS	ASTM F-1554 GR. 105
MANUFACTURING PROCESSES	
BUTT WELOS	GROUND FLUSH WITH BASE METAL
LONGITUDINAL WELOS	BUTT WELDED BY THE ELECTRICAL RESISTANCE PROCESS
CIRCUMFERENTIAL WELOS	BUTT WELDED WITH PERMANENT CONTINUOUS BACKUP RING
FINISH COATING	
STRUCTURE	HOT DIP GALVANIZED PER ASTM A-123 (AASHTO M-111)
HARDWARE	HOT DIP GALVANIZED PER ASTM A-153 (AASHTO M-232)
DESIGN CRITERIA	
STRUCTURE AND HARDWARE	IN ACCORDANCE WITH THE "SPECIFICATIONS FOR STRUCTURAL SUPPORTS OF HIGHWAY SIGNS, LUMINAIRES AND TRAFFIC SIGNALS", AASHTO 2001
WELDING	IN ACCORDANCE WITH LATEST EDITION OF AWS D1.1 WELDING CODE

- NOTES:
- CUSTOMER TO VERIFY POLE TOP CAMERA PLATE BOLT HOLE DIAMETER AND BOLT CIRCLE (B.C.) PRIOR TO POLE FABRICATION.
 - LOADS:
 - EFFECTIVE PROJECTED AREA OF CAMERA = 4 SQ. FT. AT 2 FT. ABOVE TOP OF POLE.
 - 12" DIAMETER DISH AT POLE HEIGHT W/ E.P.A. OF 1.3 SQ. FT.
 - AASHTO 2001 DESIGN PARAMETERS:
 - LOCATION: WASHINGTON STATE
 - BASIC WIND SPEED: 90 MPH.
 - DESIGN LIFE: 50 YEARS RECURRENCE INTERVAL
 - FATIGUE CATEGORY: N/A
 - DEFLECTION CRITERIA:
 MAXIMUM ALLOWABLE DEFLECTION:
 30 MPH WIND: 0.7"
 70 MPH WIND: 1.4"

AGENCY: WSDOT
 PROJECT: _____
 DISTRIBUTOR: _____
 CONTRACTOR: _____
 CUSTOMER ORDER NO.: _____
 AMERON NO.: _____

REV	DATE	DESCRIPTION	BY	APPR
D	3/08	REV NOTE 3 & DETAIL "A"	BB	GM
C	9/07	REV. DETAIL "C"	BB	JB
B	4/07	ADDED DTL. "G"	JB	GM
A	A	REV PER CUSTOMER REQUEST	BB	GM

AMERON POLE PRODUCTS DIVISION

WASHINGTON STATE CCTV POLES

THIS DOCUMENT CONTAINS INFORMATION WHICH IS PROPRIETARY TO AMERON IT SHALL NOT BE REPRODUCED, COPIED OR DISCLOSED TO ANYONE WITHOUT THE PRIOR WRITTEN PERMISSION OF AMERON.

DRAWN: BB	DATE: 5/06	SCALE: DWG. NO.	REV.
APPR: JB	DATE: 5/06	W6CCTV1	D