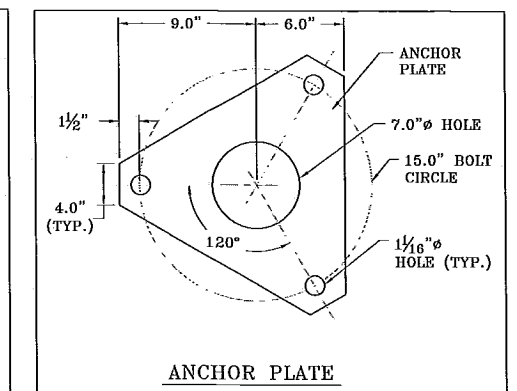
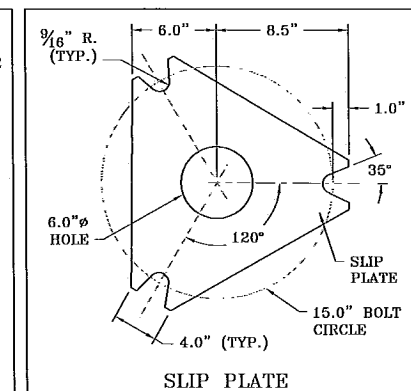
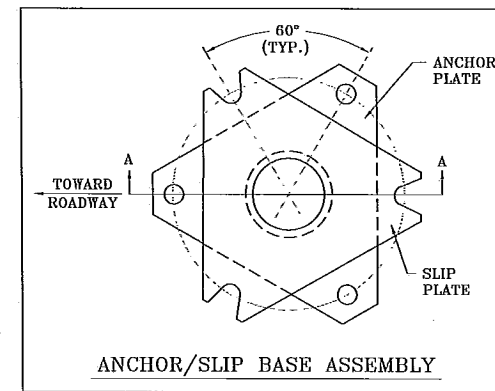


POLE DATA

POLE DESIGNATION	BASE DIA (IN)	TOP DIA (IN)	THICK-NESS (IN)	ANCHOR BOLT (IN)
TYPE PPB	2.875	2.875	0.203	1/2" x 12" x 2"
TYPE PS	5.125	4.0	0.1875	3/4" x 30"
TYPE I	5.5	4.0	0.1875	3/4" x 30"
TYPE RM	5.5	4.0	0.1875	3/4" x 30"
TYPE FB	6.0	4.0	0.1875	3/4" x 30"

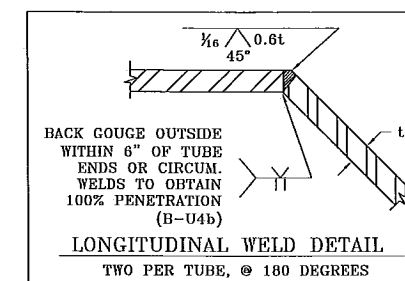
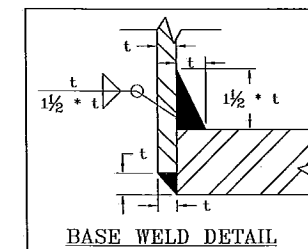
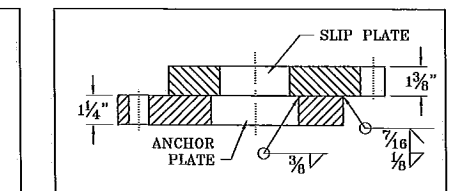
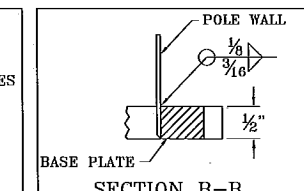
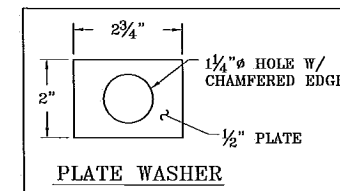


APPROVED
 Manufacturer's Pole Plan
 Approved For Listing As A
 Pre-Approved Drawing
 WSDOT Bridge & Structures Office
 By *GB* Date 4-20-2011

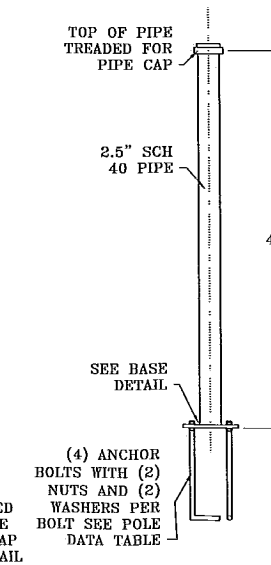
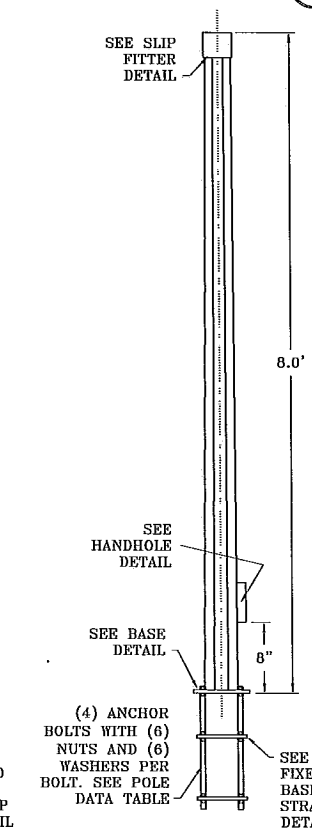
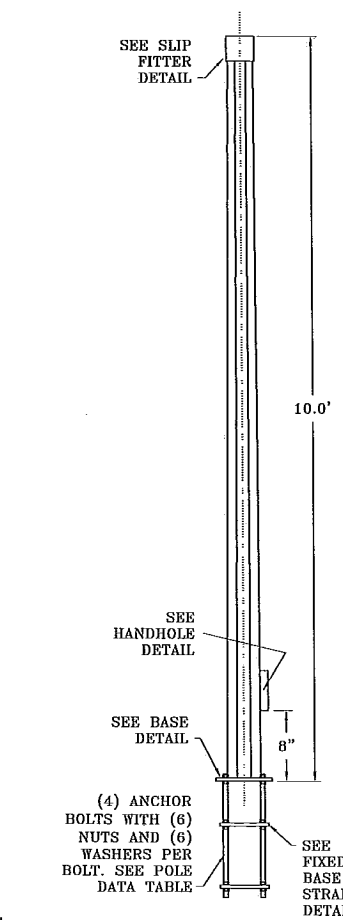
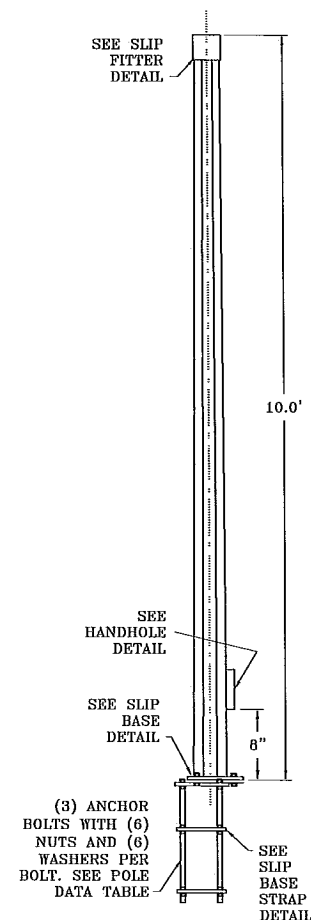
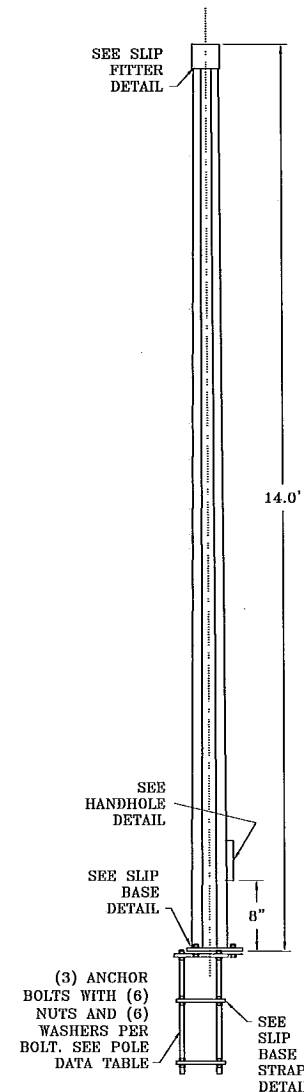


POLE SCHEDULE

POLE NUMBER	POLE DESIGNATION



- NOTES:**
- DESIGN CRITERIA**
 2009 AASHTO STANDARD SPECIFICATIONS FOR STRUCTURAL SUPPORTS FOR HIGHWAY SIGNS, LUMINAIRES, AND TRAFFIC SIGNALS.
- 90 MPH 3 SECOND GUST
 - 50 YEAR DESIGN LIFE/RECURRENCE INTERVAL
- GENERAL**
- POLE SHALL BE OCTAGONAL IN CROSS SECTION. POLE SHAFT SHALL HAVE TAPER OF 0.14 IN/FT.
 - FABRICATION SHALL CONFORM TO 2009 AASHTO STANDARD SPECIFICATIONS FOR STRUCTURAL SUPPORTS FOR HIGHWAY SIGNS, LUMINAIRES, AND TRAFFIC SIGNALS AND AWS D1.1 STRUCTURAL STEEL WELDING CODE.
 - LONGITUDINAL SEAM WELD IS 60% MIN. PENETRATION EXPECT FOR 6 INCHES FROM END OF SECTION AT FLANGE, BASE PLATE AND SLIP JOINT IS 100% PENETRATION.
- MATERIALS**
- ALL STEEL IN TUBES AND BASE PLATES SHALL CONFORM TO ASTM A572 GR50.
 - ANCHOR BOLTS SHALL CONFORM TO ASTM F1554 GR 36 NUTS SHALL CONFORM TO ASTM A563A HEX, WASHERS SHALL CONFORM TO ASTM F844.
 - CONNECTION BOLTS SHALL CONFORM TO ASTM A325, NUTS SHALL CONFORM TO ASTM A563 GR DJ HEAVY HEX, WASHERS SHALL CONFORM TO ASTM F436 TYPE I.
 - GALVANIZING SHALL CONFORM TO ASTM A123 & A153.
 - HANDHOLE FRAMES SHALL CONFORM TO ASTM A53.
 - HANDHOLE COVERS SHALL CONFORM TO ASTM A1011 GR50.
 - ALL PIPE SHALL CONFORM TO ASTM A53 GR B.
 - FASTENERS LESS THEN 1/2 IN DIAMETER SHALL BE STAINLESS STEEL OR BRASS.
 - POLE CAPS SHALL BE CAST ALUMINUM.



TYPE FB

TYPE RM

TYPE I

TYPE PS

TYPE PPB

NO.	REVISION	DATE
1	UPDATED FOR AASHTO 2001	4/03
2	UPDATED TO AASHTO 2009, NEW BOARDER, MINOR DESIGN CHANGES	3/11

WSDOT TYPE PPB, TYPE PS, TYPE I, TYPE RM, & TYPE FB POST

12965 SW Herman Rd.
 Tualatin, OR 97062
 PH: 503-635-4351
 FX: 503-635-4341
 www.nwsignal.com

Northwest Signal
 Managing mobility

DRAWING NUMBER	NWS3540
DESIGNED BY:	D. EMSLIE 6/25/08
DRAWING BY:	D. EMSLIE 6/25/08
CHECKED BY:	J. MEUSCH 6/27/08
SHEET 1 OF 1	