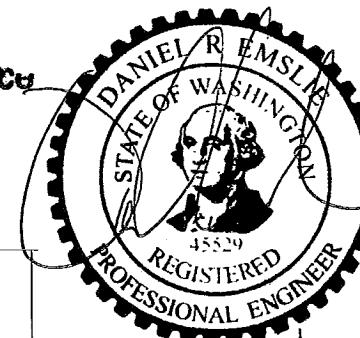


**POLE DATA**

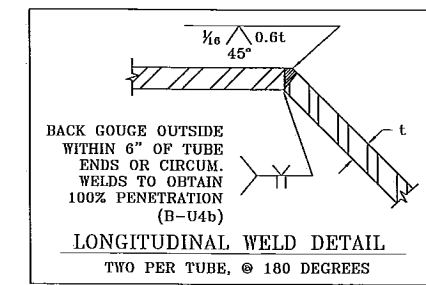
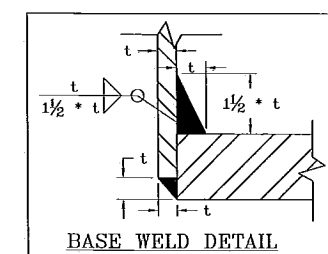
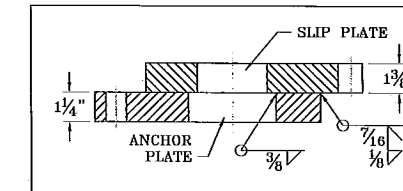
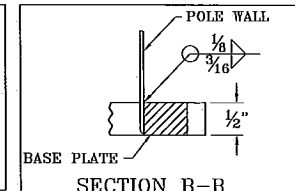
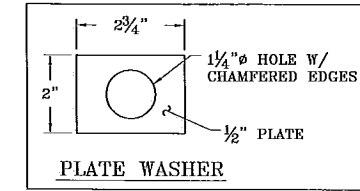
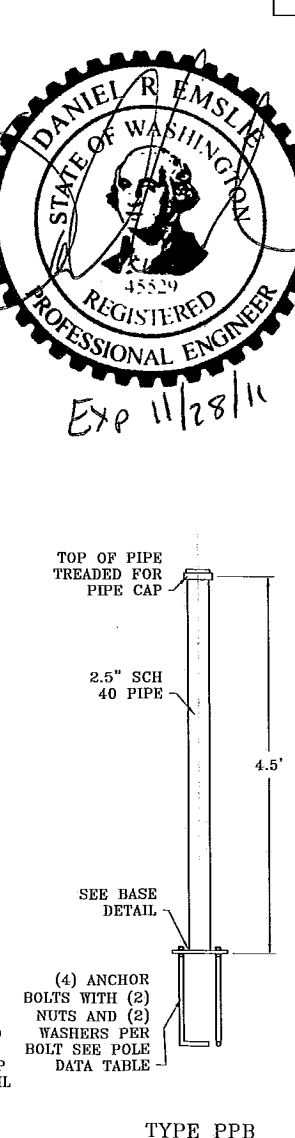
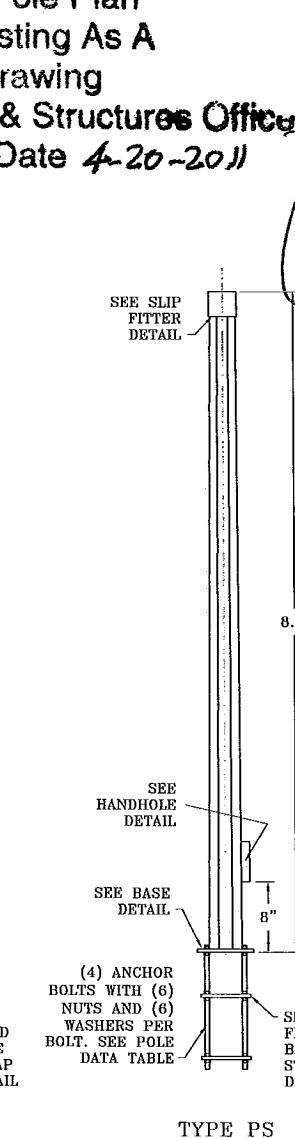
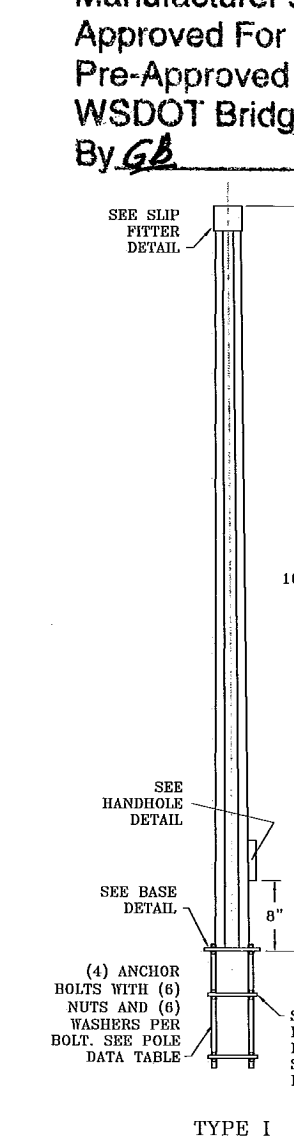
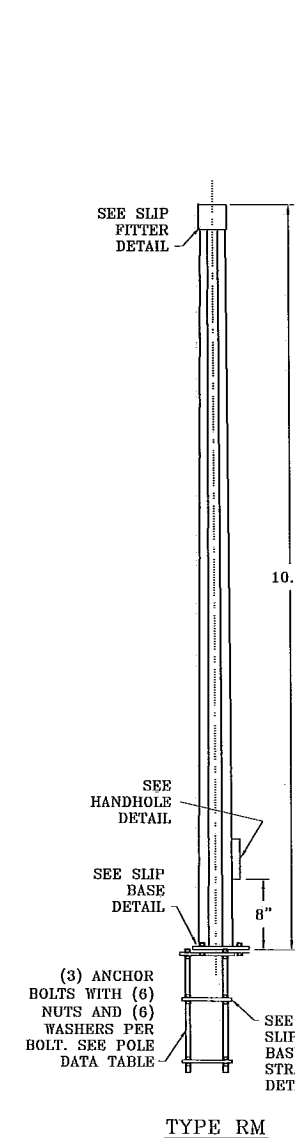
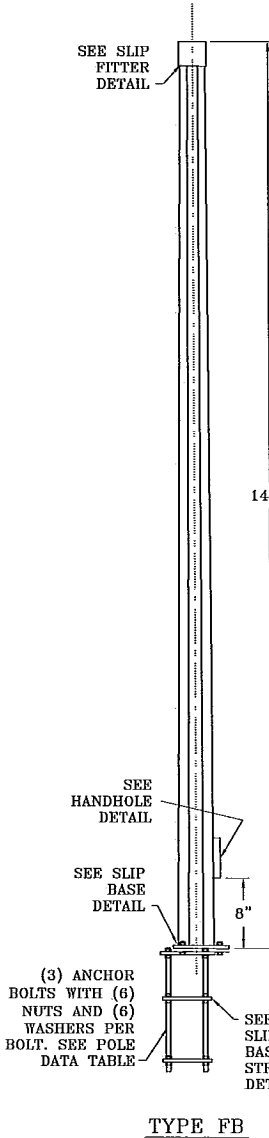
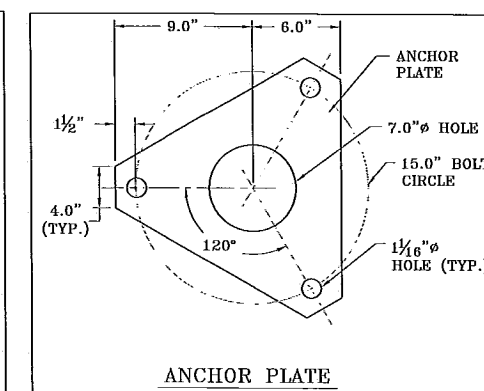
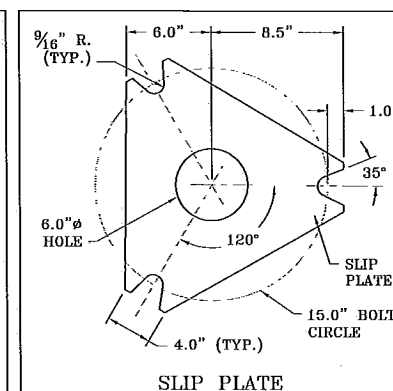
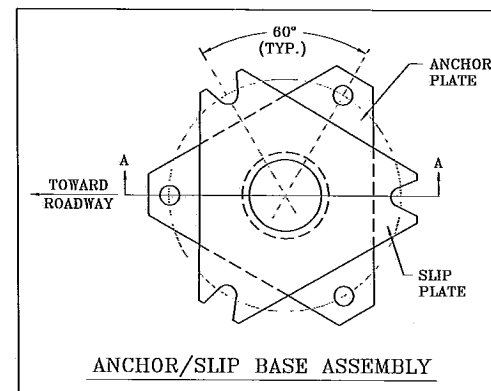
POLE DESIGNATION	BASE DIA (IN)	TOP DIA (IN)	THICK-NESS (IN)	ANCHOR BOLT (IN)
TYPE PPB	2.875	2.875	0.203	1/2" φ x 12" x 2"
TYPE PS	5.125	4.0	0.1875	3/4" φ x 30"
TYPE I	5.5	4.0	0.1875	3/4" φ x 30"
TYPE RM	5.5	4.0	0.1875	3/4" φ x 30"
TYPE FB	6.0	4.0	0.1875	3/4" φ x 30"

**APPROVED**  
 Manufacturer's Pole Plan  
 Approved For Listing As A  
 Pre-Approved Drawing  
 WSDOT Bridge & Structures Office  
 By *GB* Date *4-20-2011*



**POLE SCHEDULE**

POLE NUMBER	POLE DESIGNATION



- NOTES:**
- DESIGN CRITERIA**  
 2009 AASHTO STANDARD SPECIFICATIONS FOR STRUCTURAL SUPPORTS FOR HIGHWAY SIGNS, LUMINAIRES, AND TRAFFIC SIGNALS.
- 90 MPH 3 SECOND GUST
  - 50 YEAR DESIGN LIFE/RECURRENCE INTERVAL
- GENERAL**
- POLE SHALL BE DODECAGONAL IN CROSS SECTION. POLE SHAFT SHALL HAVE TAPER OF 0.14 IN/FT.
  - FABRICATION SHALL CONFORM TO 2009 AASHTO STANDARD SPECIFICATIONS FOR STRUCTURAL SUPPORTS FOR HIGHWAY SIGNS, LUMINAIRES, AND TRAFFIC SIGNALS AND AWS D1.1 STRUCTURAL STEEL WELDING CODE.
  - LONGITUDINAL SEAM WELD IS 60% MIN. PENETRATION EXPECT FOR 6 INCHES FROM END OF SECTION AT FLANGE, BASE PLATE AND SLIP JOINT IS 100% PENETRATION.
- MATERIALS**
- ALL STEEL IN TUBES AND BASE PLATES SHALL CONFORM TO ASTM A572 GR50.
  - ANCHOR BOLTS SHALL CONFORM TO ASTM F1554 GR 36 NUTS SHALL CONFORM TO ASTM A563A HEX, WASHERS SHALL CONFORM TO ASTM F644.
  - CONNECTION BOLTS SHALL CONFORM TO ASTM A325, NUTS SHALL CONFORM TO ASTM A563 GR DJ HEAVY HEX, WASHERS SHALL CONFORM TO ASTM F436 TYPE I.
  - GALVANIZING SHALL CONFORM TO ASTM A123 & A153.
  - HANDHOLE FRAMES SHALL CONFORM TO ASTM A53.
  - HANDHOLE COVERS SHALL CONFORM TO ASTM A1011 GR50.
  - ALL PIPE SHALL CONFORM TO ASTM A53 GR B.
  - FASTENERS LESS THAN 1/2" IN DIAMETER SHALL BE STAINLESS STEEL OR BRASS.
  - POLE CAPS SHALL BE CAST ALUMINUM.

NO.	REVISION	DATE
1	UPDATED FOR AASHTO 2001	4/03
2	UPDATED TO AASHTO 2009, NEW BOARDER, MINOR DESIGN CHANGES	3/11

**WSDOT TYPE PPB, TYPE PS, TYPE I, TYPE RM, & TYPE FB POST**

12965 SW Herman Rd.  
 Tualatin, OR 97062  
 PH: 503-635-4351  
 FX: 503-635-4341  
 www.nwsignal.com

**Northwest Signal**  
 Managing mobility

DRAWING NUMBER	NWS3540B
DESIGNED BY:	D. EMSLIE 6/25/08
DRAWING BY:	D. EMSLIE 6/25/08
CHECKED BY:	J. MEUSCH 6/27/08
SHEET 1 OF 1	