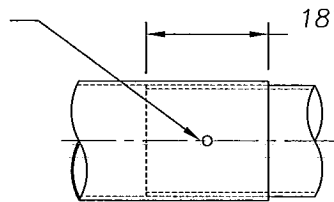
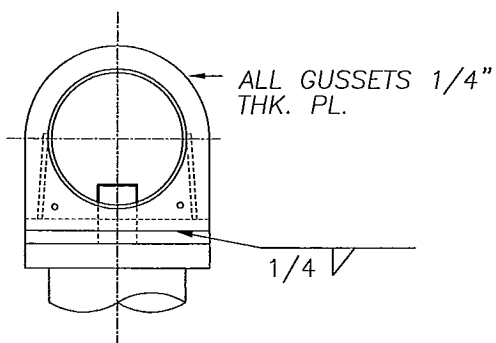


5/8" DIA STUD, W/(2)
LOCK NUTS. FIELD DRILL
INBOARD FOR SNUG FIT.



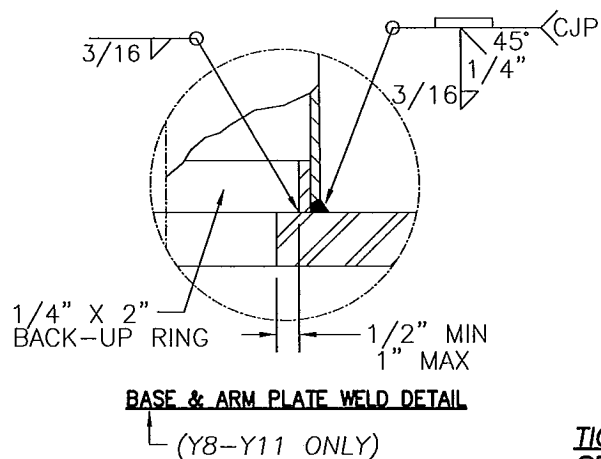
ARM SPLICE DETAIL

18" FOR DESIGN Y7-Y8, Y10, & Y11
21" FOR DESIGN Y9



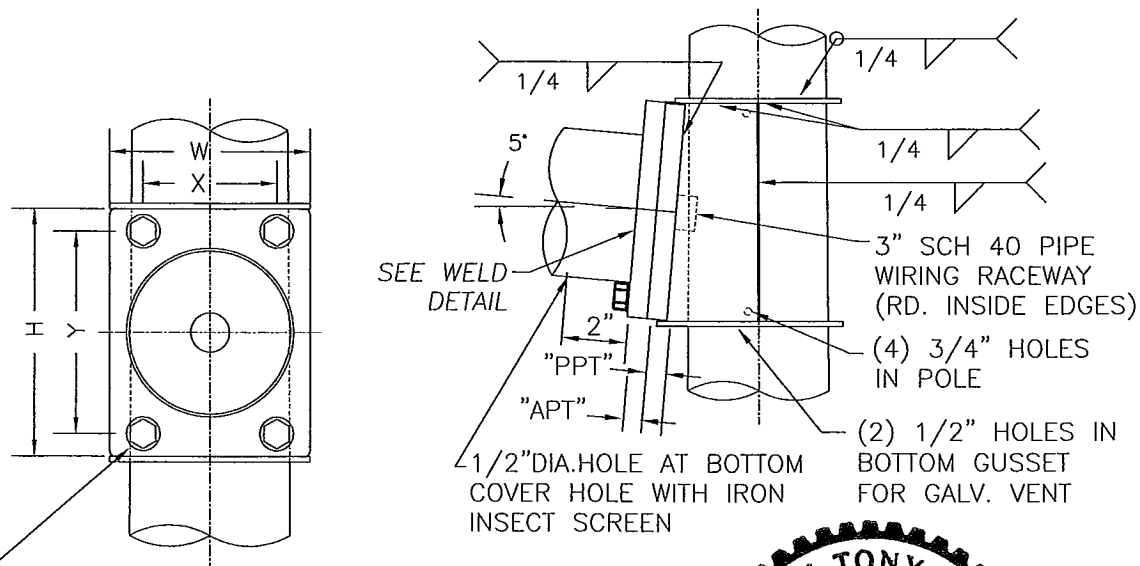
ALL GUSSETS 1/4"
THK. PL.

1/4"



BASE & ARM PLATE WELD DETAIL

(Y8-Y11 ONLY)



SEE WELD
DETAIL

1/2" DIA. HOLE AT BOTTOM
COVER HOLE WITH IRON
INSECT SCREEN

3" SCH 40 PIPE
WIRING RACEWAY
(RD. INSIDE EDGES)

(4) 3/4" HOLES
IN POLE

(2) 1/2" HOLES IN
BOTTOM GUSSET
FOR GALV. VENT

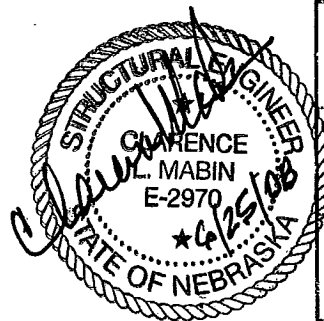
(4) (CHARTED) HEX HEAD BOLT
W/ (1) HARDENED FLAT WASHER
PER BOLT, DRILL AND TAP POLE PL.

ARM CONN. DETAIL

974
6/25/08



EXPIRES 2/1/09



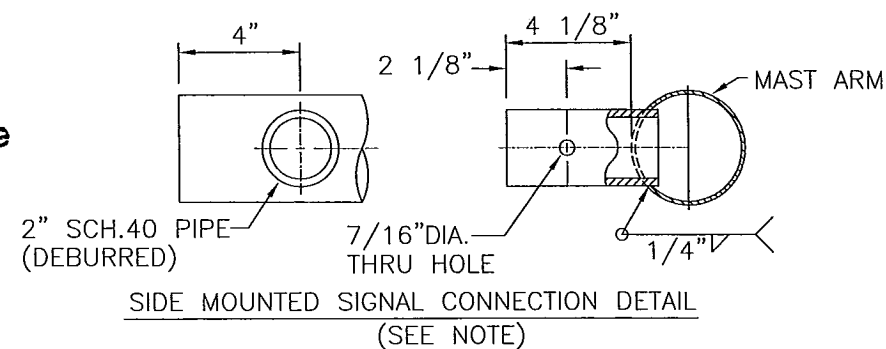
APPROVED
Manufacturer's Pole Plan
Approved For Listing As A
Pre-Approved Drawing
WSDOT Bridge & Structures Office
By GB Date 8/20/08

TIGHTENING USING TURN OF NUT METHOD BY:
SPECIFICATION FOR STRUCTURAL JOINTS USING
A325 OR A490 BOLTS, RESEARCH COUNCIL ON
STRUCTURAL CONNECTIONS 6/00

1) BOLTS SHALL BE PLACED IN ALL HOLES WITH
WASHERS. COMPACTING THE JOINT TO THE SNUG
TIGHT CONDITION SHALL PROGRESS
SYSTEMATICALLY. THE SNUG-TIGHTENED CONDITION
IS THE TIGHTNESS THAT IS ATTAINED WITH A FEW
IMPACTS OF AN IMPACT WRENCH OR THE FULL
EFFORT OF AN IRONWORKER USING AN ORDINARY
SPUD WRENCH TO BRING THE CONNECTED PLIES
INTO FIRM CONTACT.

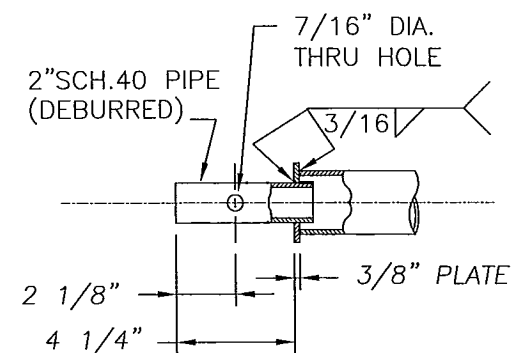
2) FOR BOLT LENGTHS NOT MORE THAN 4 BOLT
DIAMETERS, WITH BOTH FACES NORMAL TO BOLT,
1/3 TURN PAST SNUG POINT. FOR ONE FACE
SLOPED NO MORE THAN 1:20, 1/2 TURN PAST
SNUG. FOR BOTH FACES SLOPED NO MORE
THAN 1:20 FROM BOLT, 2/3 TURN PAST SNUG.

UMC DESIGN NUMBER	ARM CONNECTION							
	X	Y	H	W	PPT	APT	GUSSET	CONN. BOLTS
71026-B86-Y1								
71026-B86-Y2								
71026-B86-Y3	6 1/2"	14"	18"	13"	1 1/4"	1 1/4"	1/4"	1 1/4"
71026-B86-Y4								
71026-B86-Y5								
71026-B86-Y6								
71026-B86-Y7								
71026-B86-Y8	9"	15"	20"	16"	1 1/2"	1 1/2"	1/4"	1 1/2"
71026-B86-Y9								
71026-B86-Y10								
71026-B86-Y11								



SIDE MOUNTED SIGNAL CONNECTION DETAIL

(SEE NOTE)



END MOUNTED SIGNAL CONN. DETAIL (SEE NOTE)

TYPE II STEEL TRAFFIC POLE FOR STATE OF WASHINGTON D.O.T.	
LOF _____	ENG. REF. # 71026-B34
REQ. # 0873-07-1	S.O. # _____ CAD# _____
DRAWN LCV	DRAWING NO. 71026-B86
DATE 2/12/03	SHT. 2 OF 3
CHECKED EBL	

REVISIONS