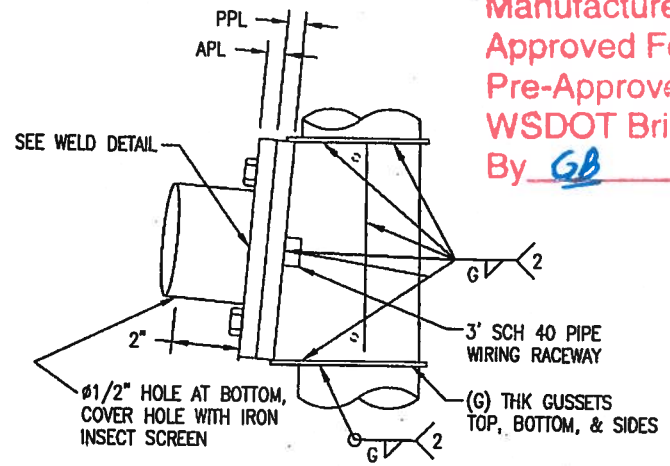
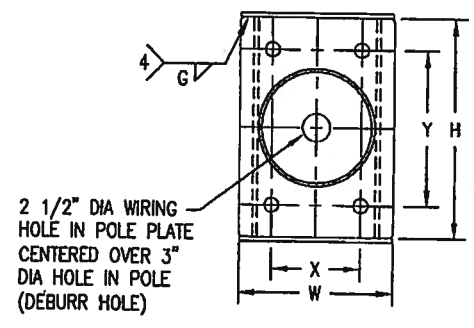
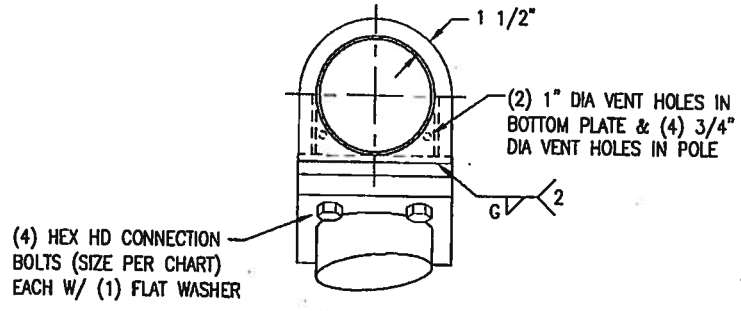
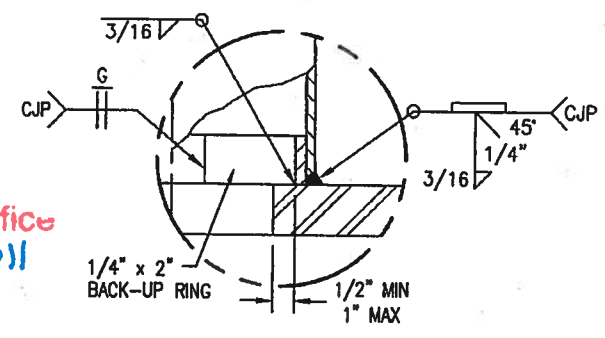


Hand copies of this document are considered uncontrolled and are to be used for reference only. Those using this document for reference must take all precautions available to ensure that this document matches the current revision maintained in digital format, within the single source and protected by edit restrictions.

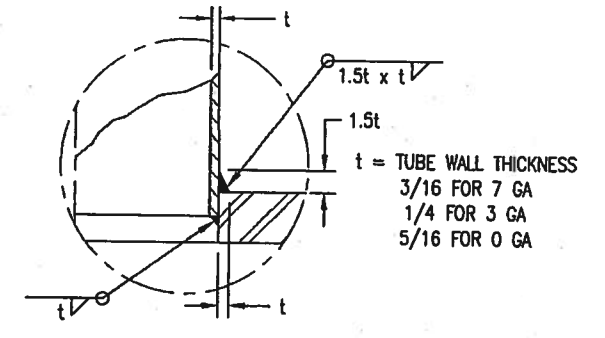


MAST ARM CONNECTION DETAIL

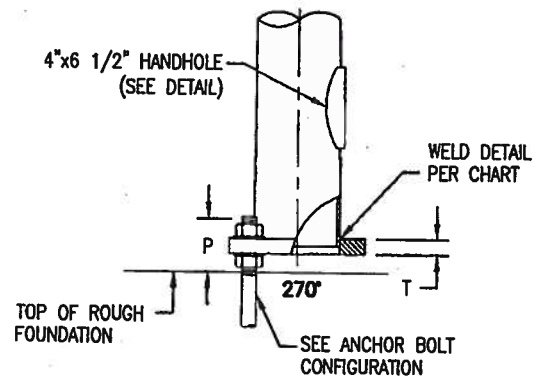
APPROVED
 Manufacturer's Pole Plan
 Approved For Listing As A
 Pre-Approved Drawing
 WSDOT Bridge & Structures Office
 By GB Date 8-23-2011



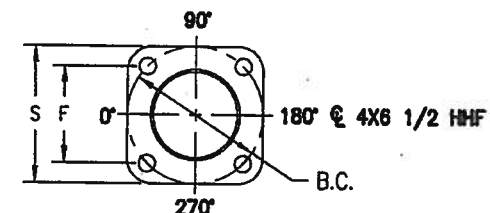
POLE BASE (PER CHART) & ARM FLANGE FULL PEN WELD DETAIL



POLE BASE SOCKET WELD DETAIL (PER CHART)



BASE CONNECTION DETAIL

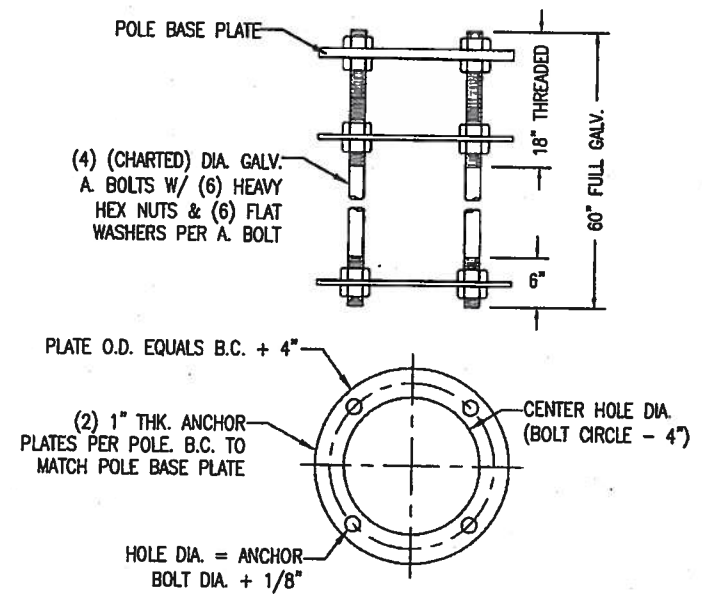


BASE PLATE DETAIL

TIGHTENING USING TURN OF NUT METHOD BY:
 SPECIFICATION FOR STRUCTURAL JOINTS USING A325 OR A490 BOLTS, RESEARCH COUNCIL ON STRUCTURAL CONNECTIONS 8/00

1) BOLTS SHALL BE PLACED IN ALL HOLES WITH WASHERS. COMPACTING THE JOINT TO THE SNUG TIGHT CONDITION SHALL PROGRESS SYSTEMATICALLY. THE SNUG-TIGHTENED CONDITION IS THE TIGHTNESS THAT IS ATTAINED WITH A FEW IMPACTS OF AN IMPACT WRENCH OR THE FULL EFFORT OF AN IRONWORKER USING AN ORDINARY SPUD WRENCH TO BRING THE CONNECTED PLIES INTO FIRM CONTACT.

2) FOR BOLT LENGTHS NOT MORE THAN 4 BOLT DIAMETERS, WITH BOTH FACES NORMAL TO BOLT, 1/3 TURN PAST SNUG POINT. FOR ONE FACE SLOPED NO MORE THAN 1:20, 1/2 TURN PAST SNUG. FOR BOTH FACES SLOPED NO MORE THAN 1:20 FROM BOLT, 2/3 TURN PAST SNUG.



ANCHOR BOLT CONFIGURATION (SHIPPED UNASSEMBLED) (REF. B100-A354)



STATE: WASHINGTON	REQ# / SO#: 0873-07-1	REV	DESCRIPTION	DATE	REV BY/CHK BY
PROJECT NAME: WASHINGTON DOT STANDARDS		REVISIONS			
TYPE II STEEL TRAFFIC POLES STATE OF WASHINGTON DOT					
	This document and the contents herein are proprietary and the property of Union Metal Corporation. This document is not to be copied, reproduced, or used for any reason except for the purposes which it was issued without the express written consent of Union Metal Corporation. Furthermore, Union Metal Corporation reserves the right to recall this document and all copies at any time for any reason.		DESIGNED BY LCV	CHECKED BY SLL	DATE 2/12/03
	71026-B86			SCALE NTS	ENG REF 71026-B34
			REVISION R9	SHEET 3 OF 3	