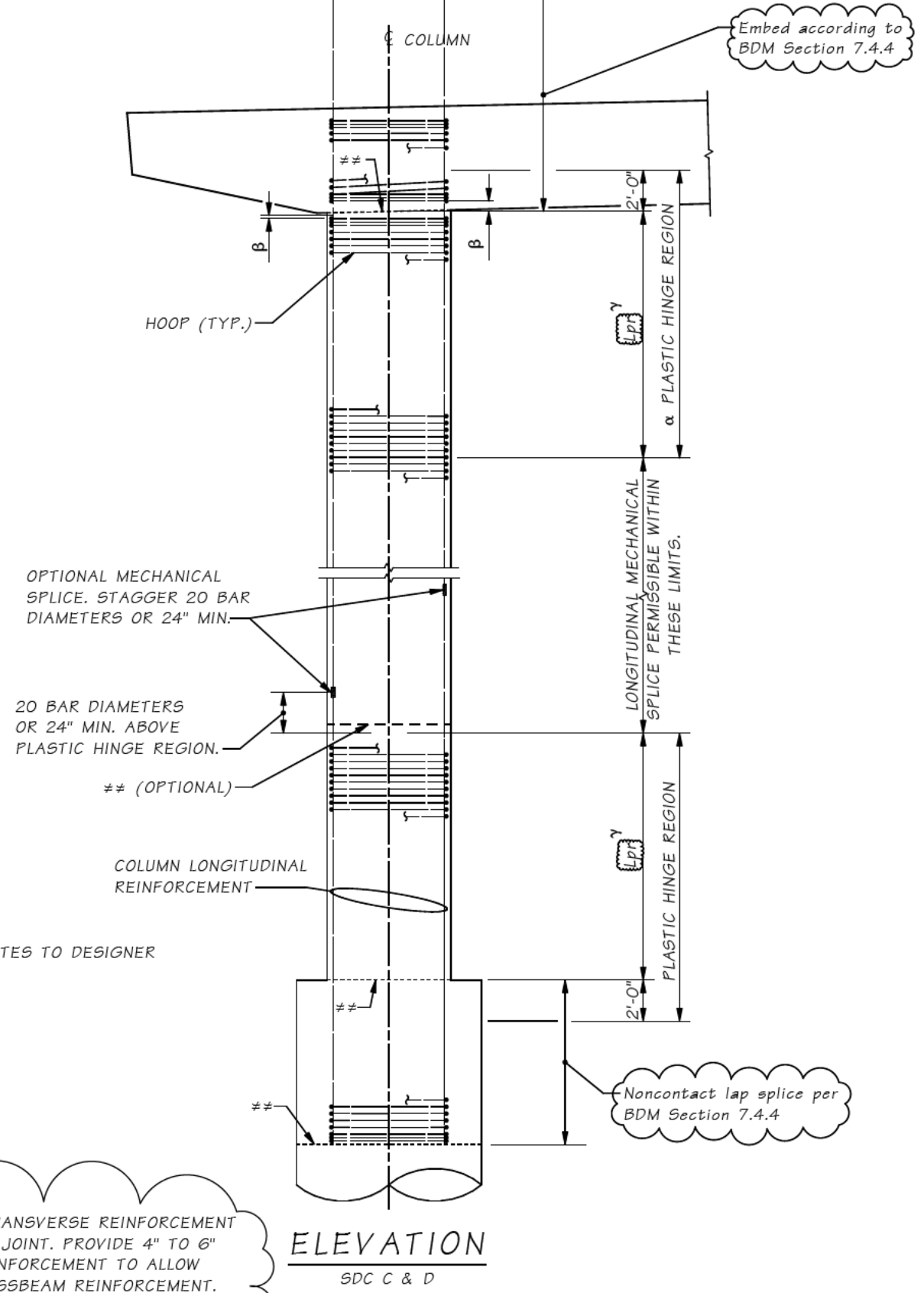


ELEVATION
SDC B



ELEVATION
SDC C & D

☁ = NOTES TO DESIGNER

☁ Noncontact lap splice per BDM Section 7.4.4

β PROVIDE 1½" CLEAR FROM TOP OF TRANSVERSE REINFORCEMENT TO LOWEST POINT OF CONSTRUCTION JOINT. PROVIDE 4" TO 6" VERTICAL BREAK IN TRANSVERSE REINFORCEMENT TO ALLOW PLACEMENT OF BOTTOM MAT OF CROSSBEAM REINFORCEMENT.

γ DETERMINED ACCORDING TO AASHTO SEISMIC 4.11.7

‡ SEE SPIRAL TERMINATION DETAIL

‡‡ CONSTRUCTION JOINT W/ ROUGHENED SURFACE

α NO WELDING OF SPIRALS IS PERMITTED IN THE PLASTIC HINGE REGION AFTER THE COLUMN CAGE IS ASSEMBLED. SPIRALS SHALL BE FIELD OR SHOP WELDED INDEPENDENTLY AND THEN ASSEMBLED AROUND THE COLUMN LONGITUDINAL STEEL AFTER WELDING.