

State Bridge and  
Structures Engineer  
Jugesh Kapur

Br. Preservation Eng.  
Harvey Coffman

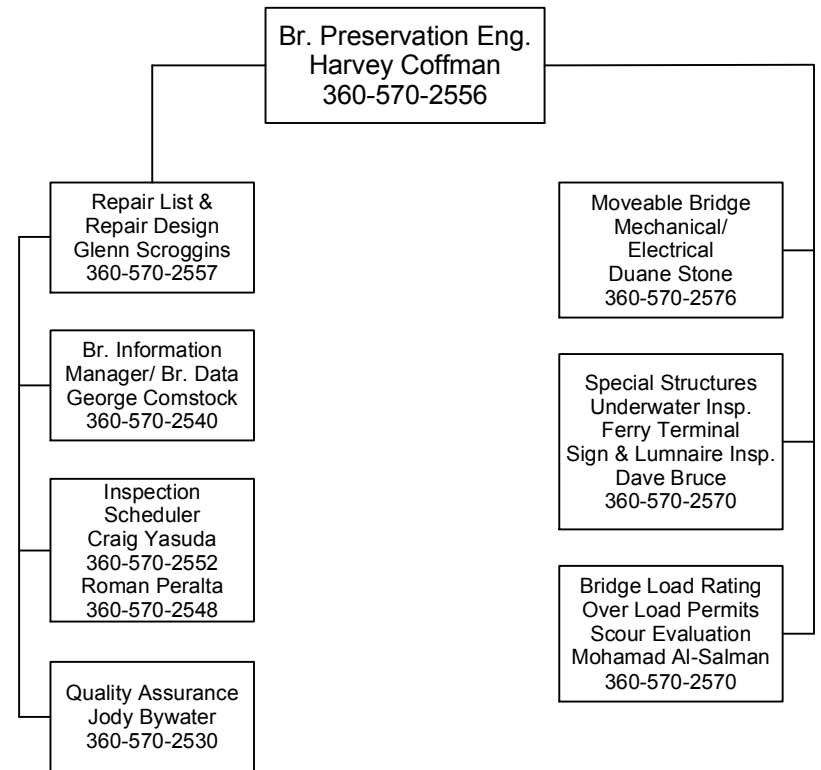
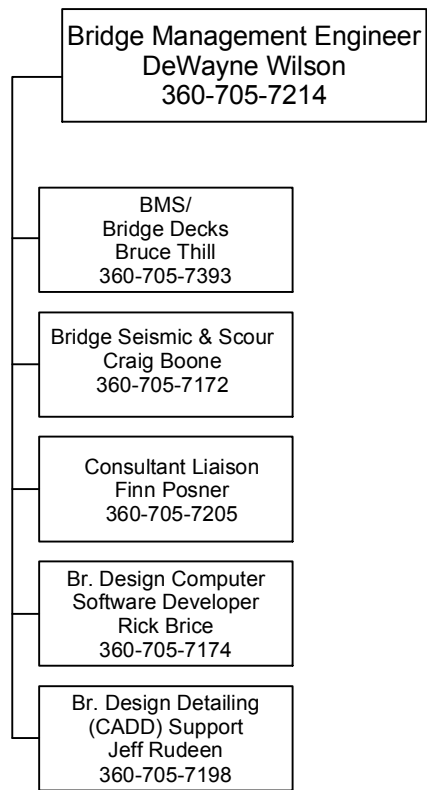
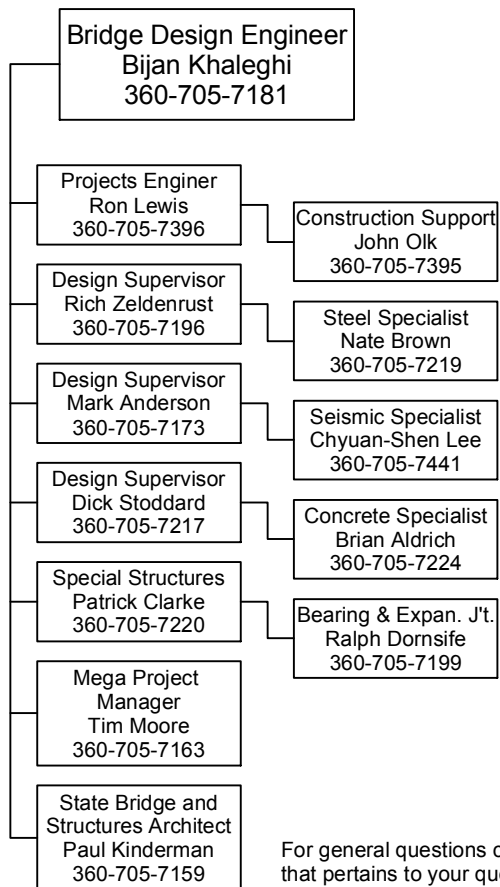
Bridge Management  
DeWayne Wilson

Bridge Design Engineer  
Bijan Khaleghi

DAMAGE BRIDGE EMERGENCY RESPONSE  
BRIDGE INSPECTION  
UNDERWATER INSPECTION  
SIGN & LUMINAIRE INSPECTION  
MOVEABLE BRIDGE MECHANICAL  
MOVEABLE BRIDGE ELECTRICAL  
BRIDGE LOAD RATING  
OVER LOAD PERMITS  
BRIDGE INVENTORY DATA  
SCOUR EVALUATION  
BRIDGE REPAIR LIST  
BRIDGE REPAIR DESIGN

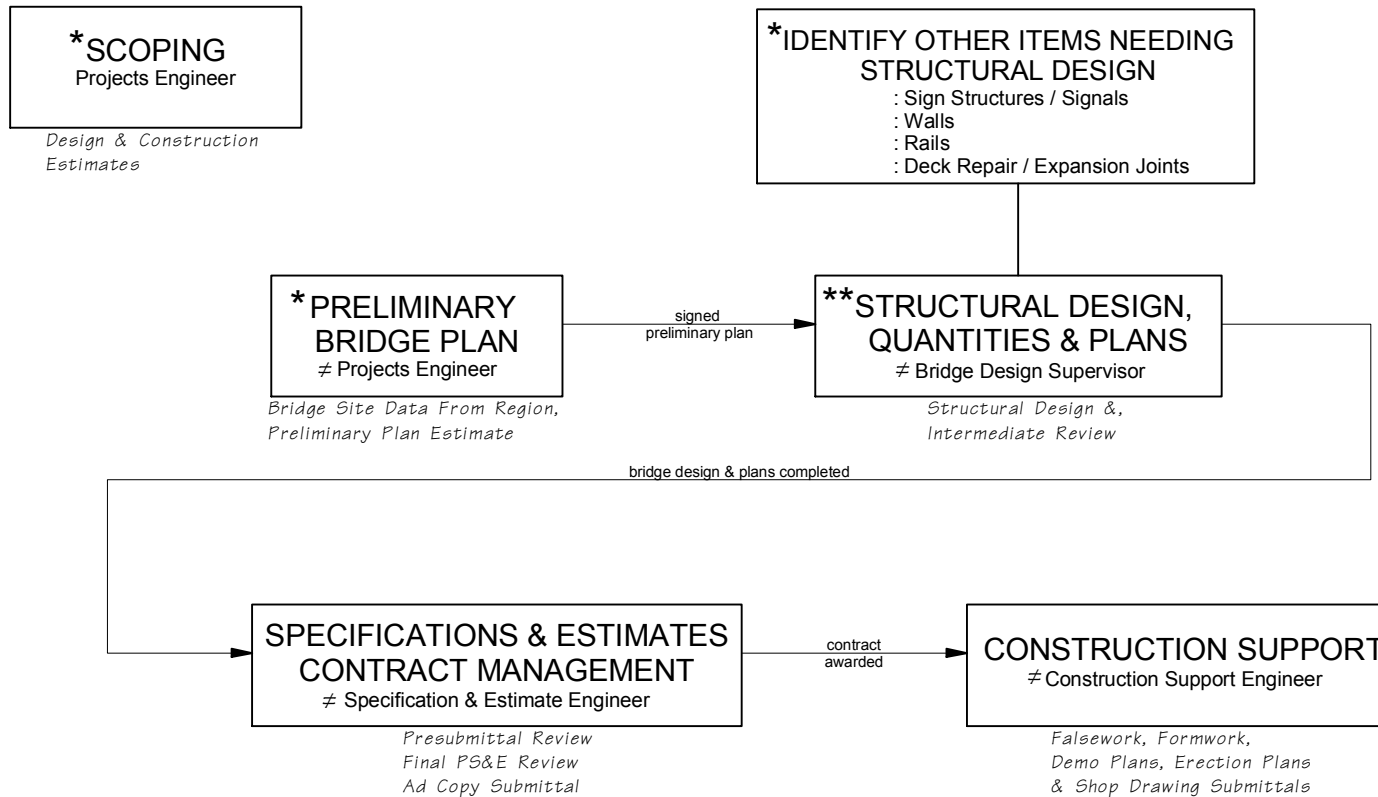
BRIDGE PRESERVATION PROGRAM  
PRIORITIZATION AND FUNDING  
CONSULTANT LIAISON  
CADD SUPPORT  
BRIDGE SOFTWARE DEVELOPEMENT

BRIDGE DESIGN  
WALL DESIGN  
SIGN STRUCTURES  
BRIDGE ARCHITECT  
SPECIALS AND ESTIMATES  
CONSTRUCTION SUPPORT  
SEISMIC DESIGN  
RAIL RETROFIT  
EXPANSION JOINTS  
BRIDGE DECK REHABILITAION  
MISC. BRIDGE DESIGN  
BRIDGE DESIGN SCHEDULE



For general questions contact the specialist that pertains to your question.

# BRIDGE DESIGN OFFICE WORK FLOW



\* All projects scheduled through the Bridge Projects Engineer.

\*\* For bridges, walls, and sign structures geotechnical report needed for design to proceed.

≠ Primary contact for this phase of the work.

All site data for bridges to be sent to Bridge Projects Engineer.

All wall site data to be sent to the State Geotechnical Office and to the Bridge Projects Engineer.

**Bridge and Structures Office**  
**Jugesh Kapur,**  
**State Bridge and Structures Engineer**

Bridge Management  
 Bridge Design

Phone: (360) 705-7200  
 Fax: (360) 705-6814

Mailing Address  
 WSDOT  
 Bridge and Structures Office  
 P.O. Box 47340  
 Olympia, WA 98504-7340

Bridge Preservation

Phone: (360) 570-2555  
 Fax: (360) 570-2553

Street Address

7345 Linderson Way SW  
 Tumwater, WA 98501  
[Click for Street Map & Directions](#)

**Bridge Design and Management**

| Title/Specialty  | Name                           | Phone        | Cell         | Email  |
|--|--------------------------------|--------------|--------------|--|
| <b>Bridge Design Engineer</b>  | <b>Bijan Khaleghi</b>          | 360-705-7181 | 360-480-9984 | <a href="mailto:KhalegB@WSDOT.WA.GOV">KhalegB@WSDOT.WA.GOV</a>   |
| <b>Bridge Project/Construction Support Manager</b><br>Specifications and Estimates | <b>Ron Lewis</b>               | 360-705-7396 | 360-791-9544 | <a href="mailto:LewisR@WSDOT.WA.GOV">LewisR@WSDOT.WA.GOV</a>     |
|  | Joe Fahoum                     | 360-705-7193 |              | <a href="mailto:FahoumJ@WSDOT.WA.GOV">FahoumJ@WSDOT.WA.GOV</a>   |
|  | Mike Bauer                     | 360-705-7190 |              | <a href="mailto:BauerM@WSDOT.WA.GOV">BauerM@WSDOT.WA.GOV</a>     |
|  | Jim Wei                        | 360-705-7169 |              | <a href="mailto:WeiJ@WSDOT.WA.GOV">WeiJ@WSDOT.WA.GOV</a>         |
|  | Scott Sargent                  | 360-705-7753 |              | <a href="mailto:SargenW@WSDOT.WA.GOV">SargenW@WSDOT.WA.GOV</a>   |
| Preliminary Design   | Jim Wei                        | 360-705-7169 |              | <a href="mailto:WeiJ@WSDOT.WA.GOV">WeiJ@WSDOT.WA.GOV</a>         |
| Construction Support Engineer  | John Oik                       | 360-705-7395 |              | <a href="mailto:OikJ@WSDOT.WA.GOV">OikJ@WSDOT.WA.GOV</a>         |
| US Coast Guard Liaison   | Glenn Waldron                  | 360-705-7185 |              | <a href="mailto:WaldroG@WSDOT.WA.GOV">WaldroG@WSDOT.WA.GOV</a>   |
| Scheduling Engineer  | Jerry Plesha                   | 360-705-7165 |              | <a href="mailto:PleshaG@WSDOT.WA.GOV">PleshaG@WSDOT.WA.GOV</a>   |
| <b>Bridge Management Engineer</b>  | <b>DeWayne Wilson</b>          | 360-705-7214 | 360-480-6276 | <a href="mailto:WilsonD@WSDOT.WA.GOV">WilsonD@WSDOT.WA.GOV</a>   |
| Bridge Engineering Software  | Rick Brice                     | 360-705-7174 |              | <a href="mailto:BriceR@WSDOT.WA.GOV">BriceR@WSDOT.WA.GOV</a>     |
| Bridge Management System Engineer  | Bruce Thill                    | 360-705-7393 |              | <a href="mailto:ThillB@WSDOT.WA.GOV">ThillB@WSDOT.WA.GOV</a>     |
| Bridge Consultant Liaison Engineer   | Finn Posner                    | 360-705-7205 |              | <a href="mailto:PosnerF@WSDOT.WA.GOV">PosnerF@WSDOT.WA.GOV</a>   |
| Seismic and Scour Program  | Craig Boone                    | 360-705-7172 |              | <a href="mailto:BooneC@WSDOT.WA.GOV">BooneC@WSDOT.WA.GOV</a>     |
| CAD  | Jeff Rudeen                    | 360-705-7198 |              | <a href="mailto:RudeenJ@WSDOT.WA.GOV">RudeenJ@WSDOT.WA.GOV</a>   |
| <b>Design Unit X Manager</b>   | <b>Richard (Dick) Stoddard</b> | 360-705-7217 | 360-480-9554 | <a href="mailto:stoddari@WSDOT.WA.GOV">stoddari@WSDOT.WA.GOV</a> |
| Concrete Specialist  | Brian Aldrich                  | 360-705-7224 |              | <a href="mailto:AldricB@WSDOT.WA.GOV">AldricB@WSDOT.WA.GOV</a>   |
| Bridge Rail Specialist   | David Sawahata                 | 360-705-6941 |              | <a href="mailto:SawahaD@WSDOT.WA.GOV">SawahaD@WSDOT.WA.GOV</a>   |
| <b>Design Unit Y Manager</b>   | <b>Mark Anderson</b>           | 360-705-7173 | 360-480-8960 | <a href="mailto:AndersM@WSDOT.WA.GOV">AndersM@WSDOT.WA.GOV</a>   |
| Seismic Design Specialist  | Chyuan-Shen Lee                | 360-705-7441 |              | <a href="mailto:LeeCh@WSDOT.WA.GOV">LeeCh@WSDOT.WA.GOV</a>       |
| Retaining Walls (including MSE) and Noise Walls                                    | Monique Pawelka                | 360-705-7754 |              | <a href="mailto:PawelkM@WSDOT.WA.GOV">PawelkM@WSDOT.WA.GOV</a>   |
| <b>Design Unit Z Manager</b>   | <b>Richard Zeldenrust</b>      | 360-705-7196 | 360-480-9582 | <a href="mailto:ZeldenR@WSDOT.WA.GOV">ZeldenR@WSDOT.WA.GOV</a>   |
| Structural Steel Specialist  | Geoff Swett                    | 360-705-7157 |              | <a href="mailto:BrownN@WSDOT.WA.GOV">BrownN@WSDOT.WA.GOV</a>     |

|   |                       |              |              |  |
|---|-----------------------|--------------|--------------|--|
| Truss and Monotube Overhead Sign Structures       | Matt Rochon           | 360-705-6856 |              | <a href="mailto:RochonM@WSDOT.WA.GOV">RochonM@WSDOT.WA.GOV</a> |
|   | Pat Gallagher         | 360-705-7162 |              | <a href="mailto:GallagP@WSDOT.WA.GOV">GallagP@WSDOT.WA.GOV</a> |
| Bridge Mounted Sign Structures (Brackets)         | Mike Rosa             | 360-705-7156 |              | <a href="mailto:RosaM@WSDOT.WA.GOV">RosaM@WSDOT.WA.GOV</a>     |
|   | Amy Leland            | 360-705-7394 |              | <a href="mailto:LelandA@WSDOT.WA.GOV">LelandA@WSDOT.WA.GOV</a> |
| Signal Bridges                                    | Evan Grimm            | 360-705-7184 |              | <a href="mailto:GrimmE@WSDOT.WA.GOV">GrimmE@WSDOT.WA.GOV</a>   |
| Pole Structures                                   | Gary Bedi             | 360-705-7443 |              | <a href="mailto:BediG@WSDOT.WA.GOV">BediG@WSDOT.WA.GOV</a>     |
| <b>Floating Bridge/Special Structures Manager</b> | <b>Patrick Clarke</b> | 360-705-7220 | 360-485-2076 | <a href="mailto:ClarkeP@WSDOT.WA.GOV">ClarkeP@WSDOT.WA.GOV</a> |
| Bearing and Expansion Joint Specialist            | Ralph Dornsife        | 360-705-7199 |              | <a href="mailto:DornsiR@WSDOT.WA.GOV">DornsiR@WSDOT.WA.GOV</a> |
| <b>Architect</b>                                  | <b>Paul Kinderman</b> | 360-705-7159 |              | <a href="mailto:KindePa@WSDOT.WA.GOV">KindePa@WSDOT.WA.GOV</a> |
| <b>Mega Project Manager</b>                       | <b>Tim Moore</b>      | 360-705-7163 | 253-380-2825 | <a href="mailto:MooreT@WSDOT.WA.GOV">MooreT@WSDOT.WA.GOV</a>   |

| Bridge Preservation                   |                           |              |              |  |
|---------------------------------------|---------------------------|--------------|--------------|--|
| Title/Specialty                       | Name                      | Phone        | Cell         | Email  |
| <b>Bridge Preservation Engineer</b>   | <b>Harvey Coffman</b>     | 360-570-2556 | 360-561-3859 | <a href="mailto:CoffmaH@WSDOT.WA.GOV">CoffmaH@WSDOT.WA.GOV</a>   |
| <b>Bridge Preservation Supervisor</b> | <b>Glen Scroggins</b>     | 360-570-2557 | 360-561-8598 | <a href="mailto:ScroggG@WSDOT.WA.GOV">ScroggG@WSDOT.WA.GOV</a>   |
| Coding & Appraisal Engineer           | George Comstock           | 360-570-2540 |              | <a href="mailto:ComstoG@WSDOT.WA.GOV">ComstoG@WSDOT.WA.GOV</a>   |
| Bridge Inventory                      | Barbara Johnstone         | 360-570-2562 |              | <a href="mailto:JohnstB@WSDOT.WA.GOV">JohnstB@WSDOT.WA.GOV</a>   |
|                                       | Paul Evans                | 360-570-2522 |              | <a href="mailto:EvansPa@WSDOT.WA.GOV">EvansPa@WSDOT.WA.GOV</a>   |
| Bridge Repairs                        | Glenn Scroggins           | 360-570-2557 |              | <a href="mailto:ScroggG@WSDOT.WA.GOV">ScroggG@WSDOT.WA.GOV</a>   |
|                                       | 24 Hour Emergency Contact | 360-480-4500 |              |  |
| Regional Inspection                   | Roman Peralta             | 360-570-2548 | 360-481-5606 | <a href="mailto:PeraltR@WSDOT.WA.GOV">PeraltR@WSDOT.WA.GOV</a>   |
|                                       | Craig Yasuda              | 360-570-2552 | 360-485-7711 | <a href="mailto:YasudaC@WSDOT.WA.GOV">YasudaC@WSDOT.WA.GOV</a>   |
| Ferry Terminal Inspection             | Dave Bruce                | 360-570-2575 | 360-561-3340 | <a href="mailto:BruceD@WSDOT.WA.GOV">BruceD@WSDOT.WA.GOV</a>     |
| Inspection Scheduler                  | Craig Yasuda              | 360-570-2552 | 360-485-7711 | <a href="mailto:YasudaC@WSDOT.WA.GOV">YasudaC@WSDOT.WA.GOV</a>   |
| Load Rating/Superload Permits         | Mohamad Al-Salman         | 360-570-2567 |              | <a href="mailto:AlSalM@WSDOT.WA.GOV">AlSalM@WSDOT.WA.GOV</a>     |
| Moveable Bridges                      | Duane Stone               | 360-570-2576 |              | <a href="mailto:StoneDu@WSDOT.WA.GOV">StoneDu@WSDOT.WA.GOV</a>   |
| Mechanical/Electrical Inspections     |                           |              |              |  |
| Quality Assurance                     | Jody Bywater              | 360-570-2530 |              | <a href="mailto:BywaterJ@WSDOT.WA.GOV">BywaterJ@WSDOT.WA.GOV</a> |
| Scour Evaluation                      | Jim Dorgan                | 360-570-2569 |              | <a href="mailto:DorganJ@WSDOT.WA.GOV">DorganJ@WSDOT.WA.GOV</a>   |
| Sign Support Inspections              | James Wege                | 360-570-2543 |              | <a href="mailto:WegeJa@WSDOT.WA.GOV">WegeJa@WSDOT.WA.GOV</a>     |
| Special Structures                    | Dave Bruce                | 360-570-2570 |              | <a href="mailto:BruceD@WSDOT.WA.GOV">BruceD@WSDOT.WA.GOV</a>     |
| Underwater Inspection                 | Dave Bruce                | 360-570-2570 |              | <a href="mailto:BruceD@WSDOT.WA.GOV">BruceD@WSDOT.WA.GOV</a>     |
| Dive Team                             | Darren Nebergall          | 360-570-2536 |              | <a href="mailto:NebergD@WSDOT.WA.GOV">NebergD@WSDOT.WA.GOV</a>   |
|                                       | Jim Harding               | 360-570-2561 |              | <a href="mailto:HardiJI@WSDOT.WA.GOV">HardiJI@WSDOT.WA.GOV</a>   |