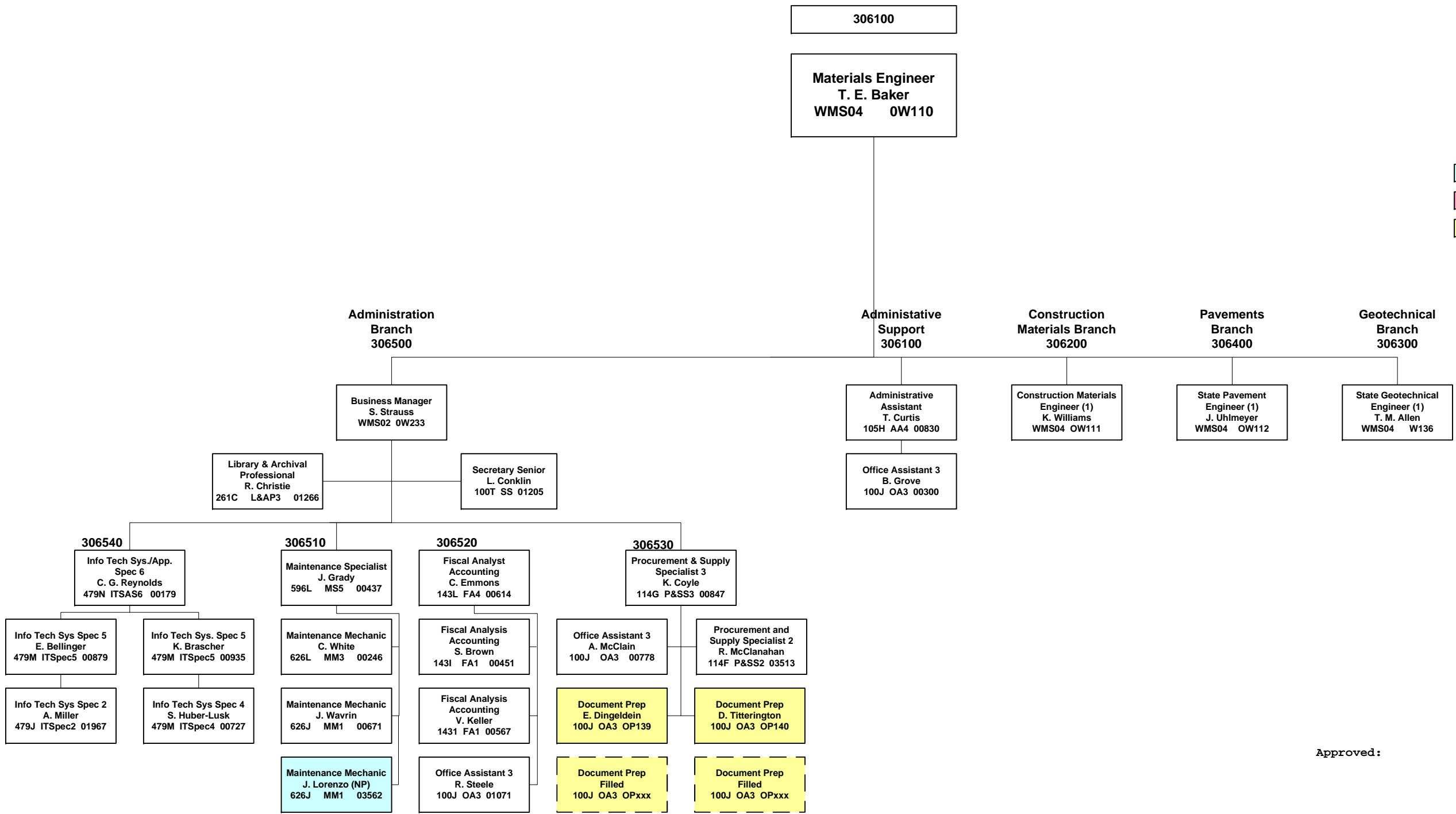


(1) Testing Manager  
(2) Testing Supervisor  
(3) Testing Technician

Seasonal/Temporary  
Vacant, on hold but plan to fill eventually  
Project



Approved:

State Materials Engineer

Date

Director, Environmental & Engineering Programs

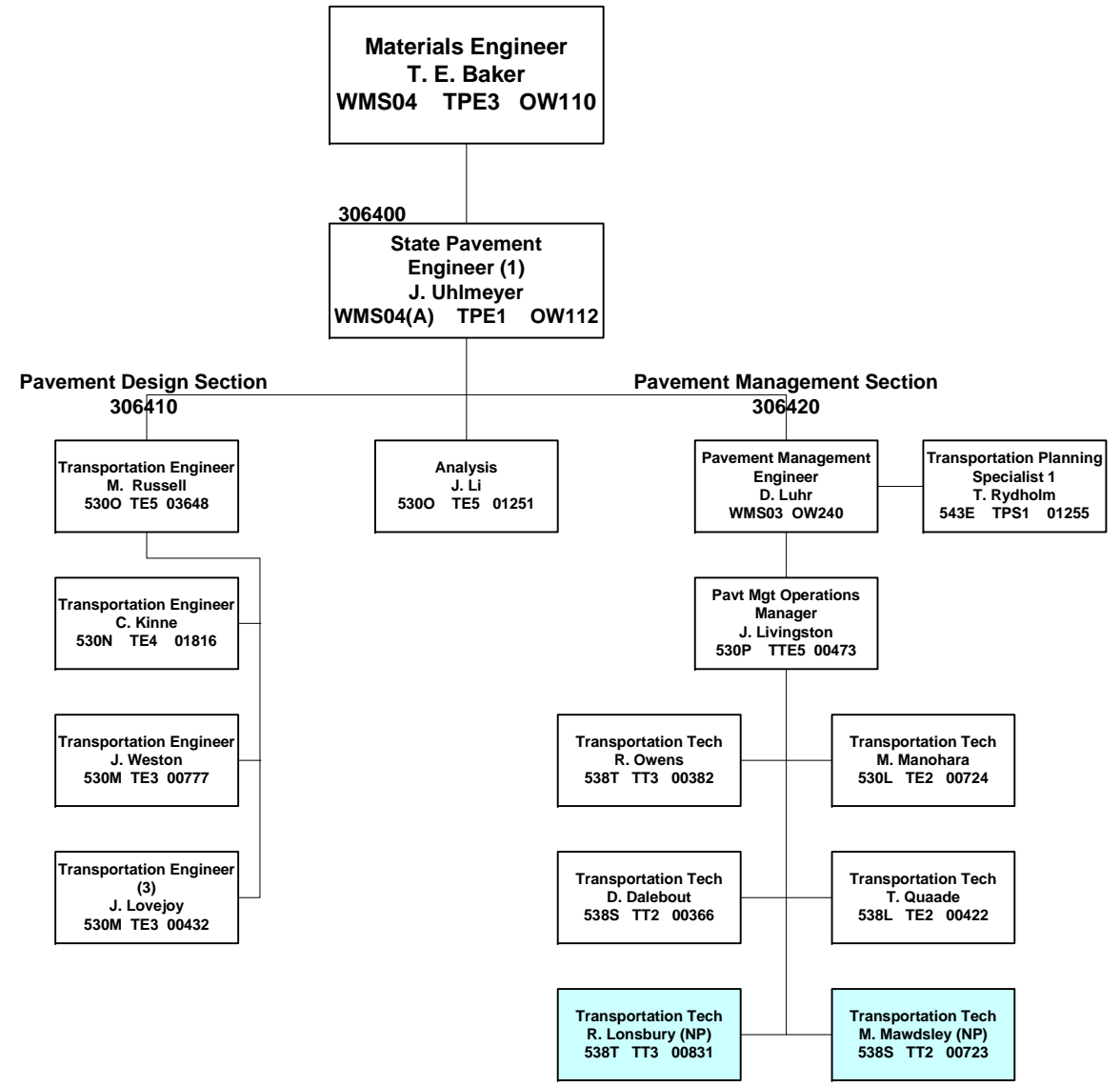
Date

November 1, 2009

Environmental and Engineering  
Programs Division  
Materials Laboratory

(1) Testing Manager  
(2) Testing Supervisor  
(3) Testing Technician

Seasonal/Temporary  
Vacant, on hold but plan to fill eventually  
Project



Approved:

\_\_\_\_\_  
State Materials Engineer

\_\_\_\_\_  
Date

\_\_\_\_\_  
State Pavement Engineer

\_\_\_\_\_  
Date

Seasonal/Temporary

Vacant, on hold but plan to fill eventually

Project

**State Materials Engineer**  
T. E. Baker  
WMS04 TPE3 OW110  
306300

**State Geotechnical Engr**  
T. M. Allen (1)  
WMS04(A) TPE1 OW136

**Foundation Engineering Section**

**Engineering Geology Section**

306310

306320

**Chief Foundation Engr**  
J. Cuthbertson  
WMS03 OW235

**Chief Engineering Geologist**  
S. Lowell  
WMS03 OW234

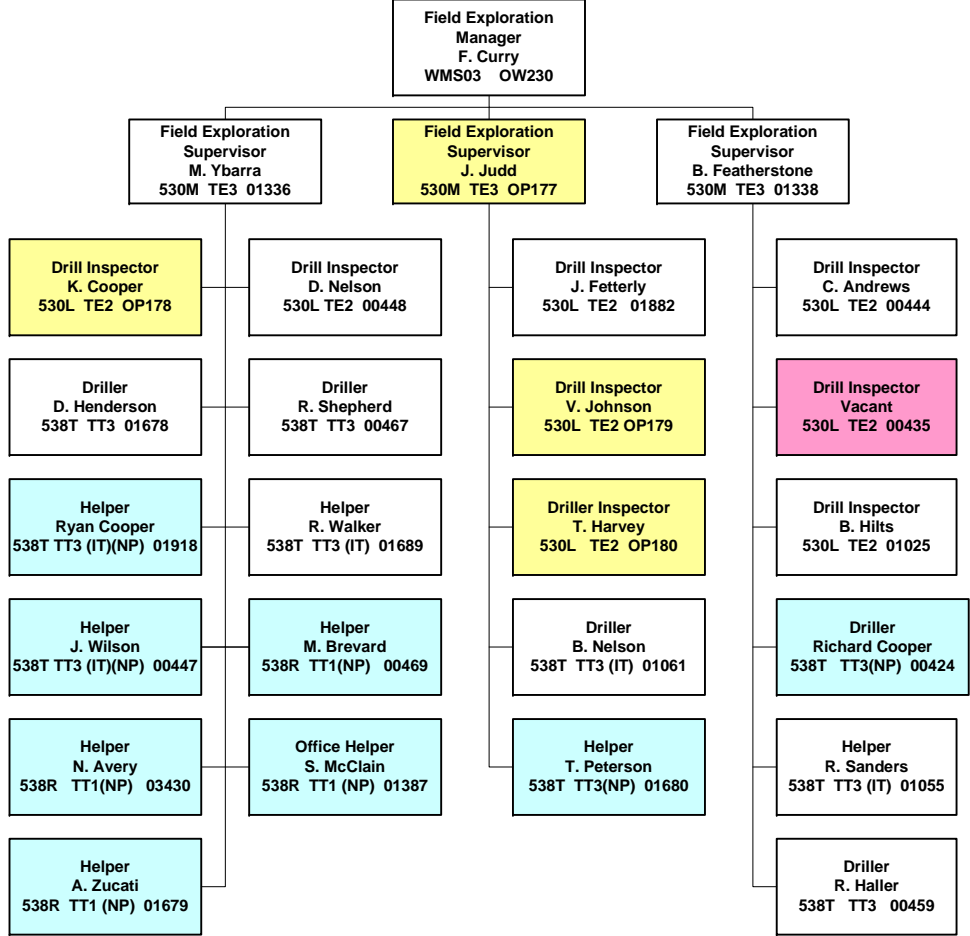
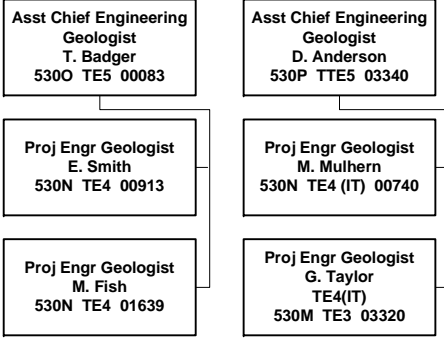
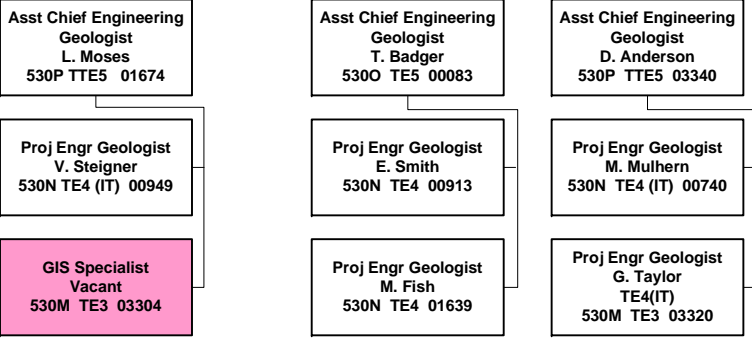
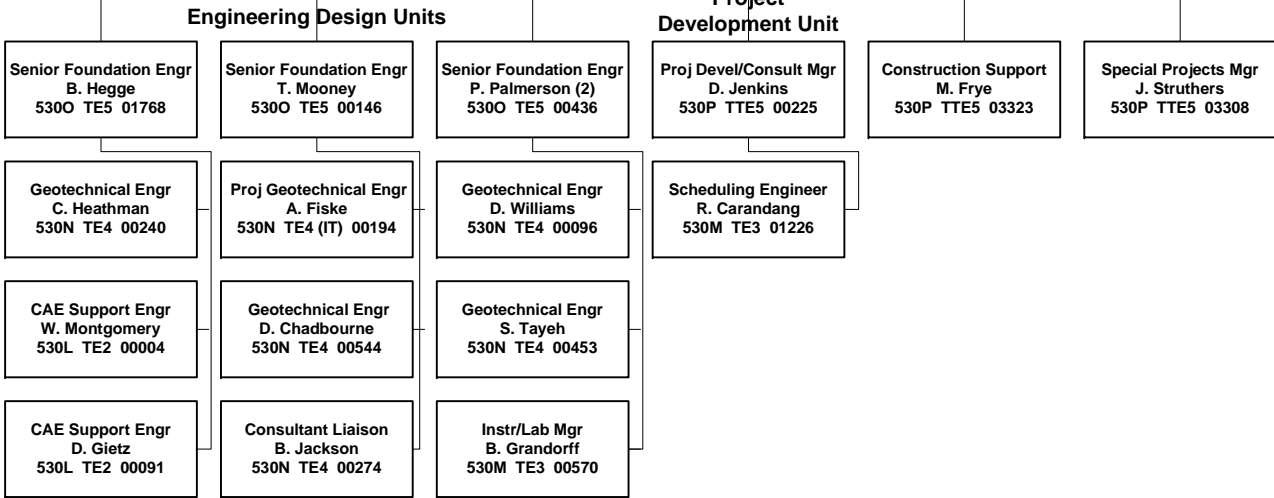
**Project Development Unit**

**Unstable Slope Management and Materials Source Assessment Unit**

**Engineering Geology Design and Construction Unit**

**Field Exploration Unit**

306330



Approved:

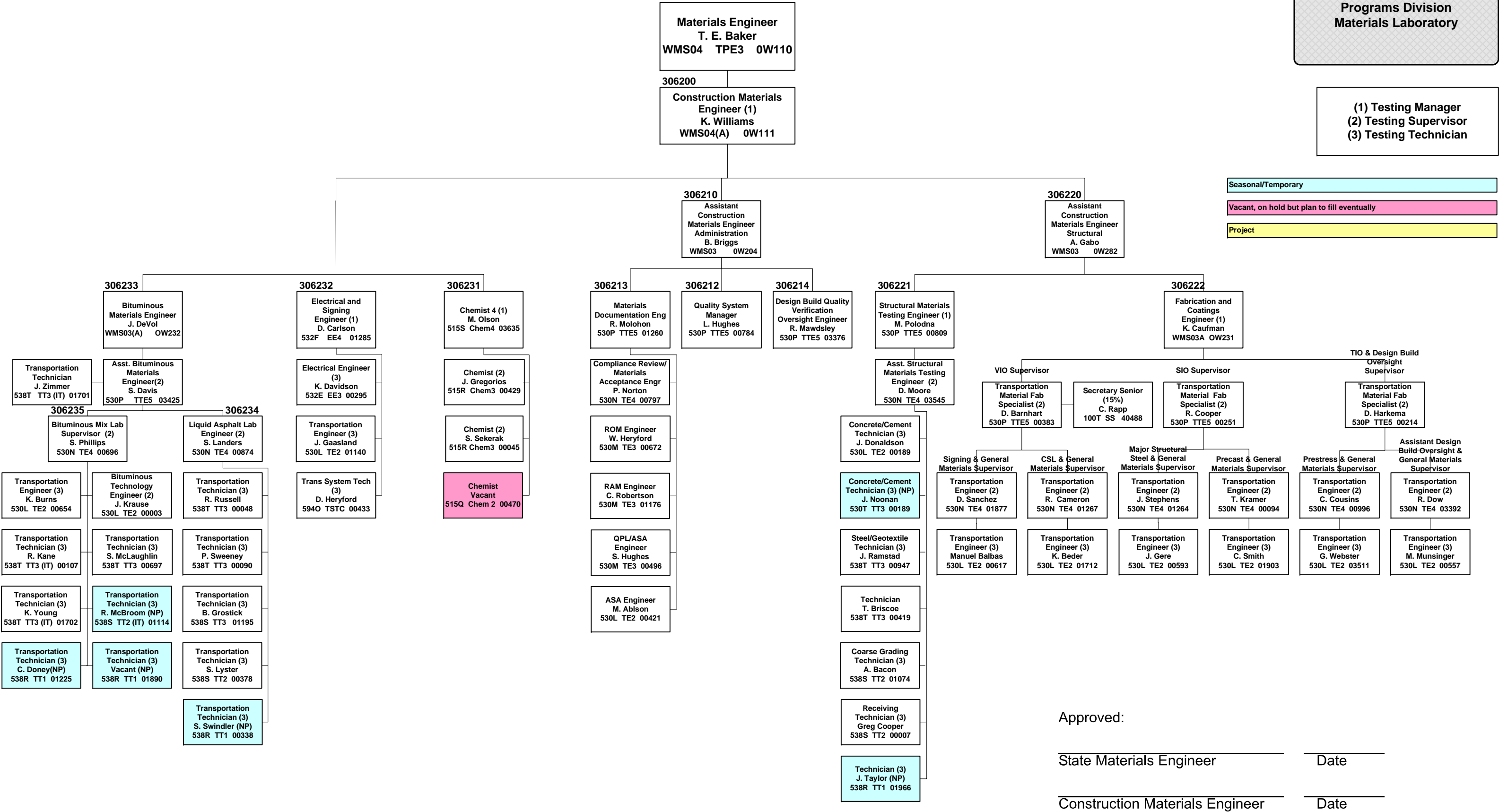
State Materials Engineer

Date

State Geotechnical Engineer

Date

(1) Testing Manager  
(2) Testing Supervisor  
(3) Testing Technician



Seasonal/Temporary  
Vacant, on hold but plan to fill eventually  
Project

Approved: \_\_\_\_\_  
State Materials Engineer  
Date

\_\_\_\_\_ Date  
Construction Materials Engineer