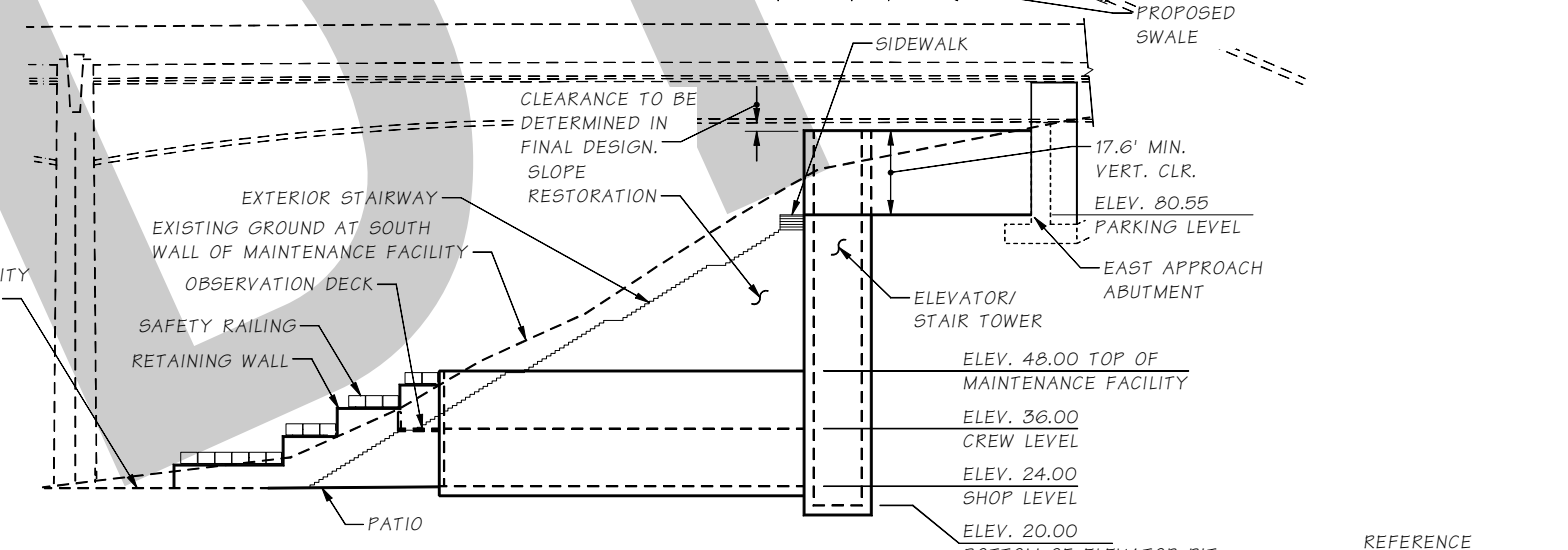
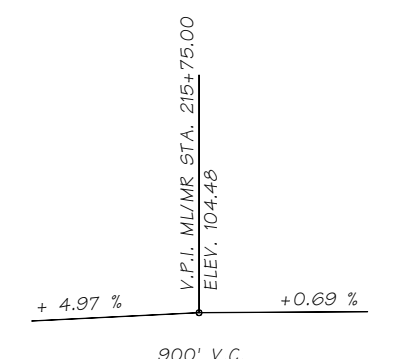
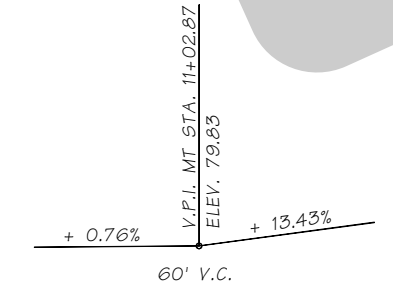
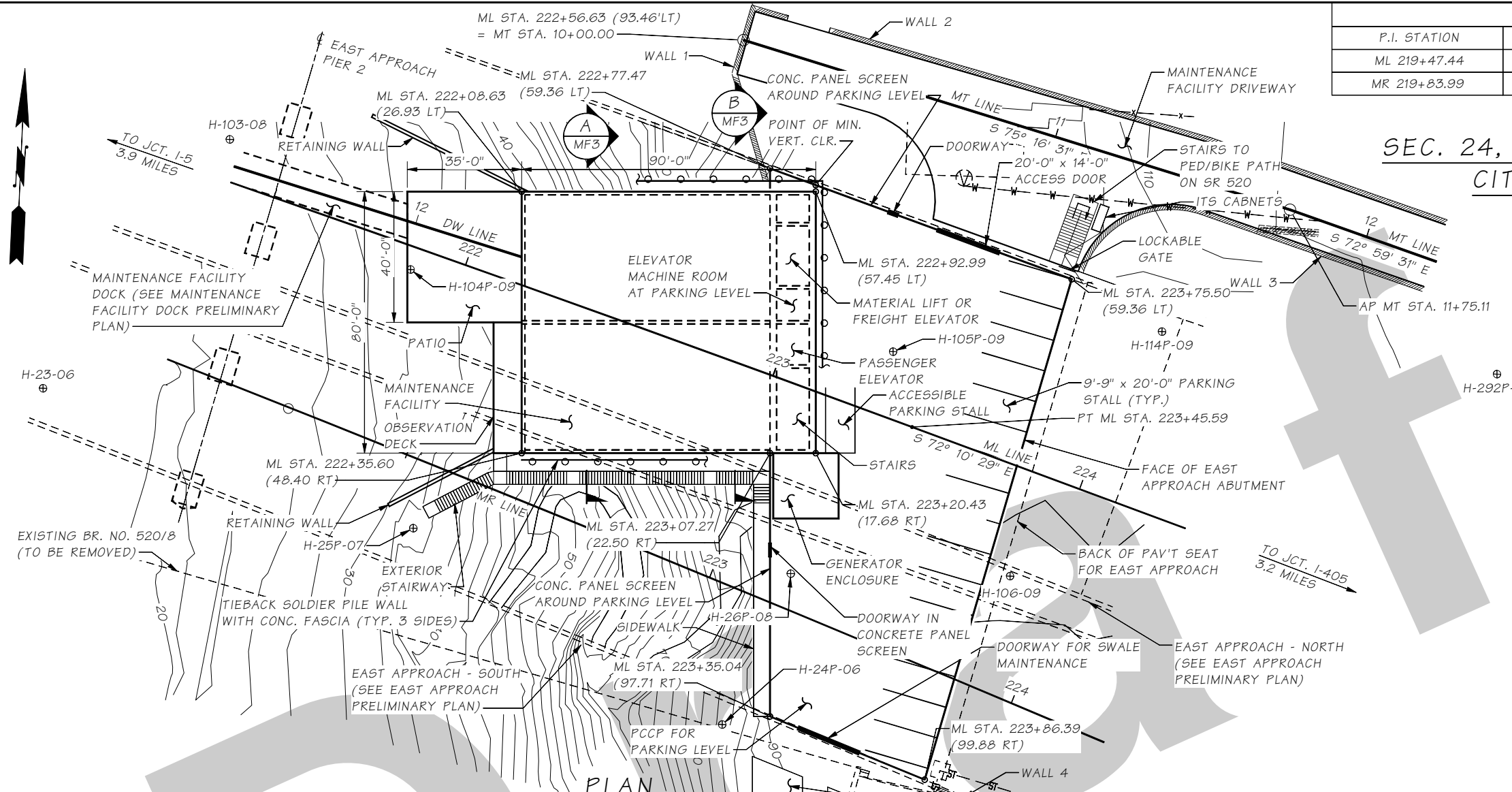


PT. OF MINIMUM VERTICAL CLR.,  
ML STA. 222+92.31 (59.33' LT)

CURVE DATA					
P.I. STATION	Δ	RADIUS	TANGENT	LENGTH	BK. TANGENT BRG.
ML 219+47.44	03°54'48" RT.	11663.00'	398.46'	796.61'	S 76°05'17" E
MR 219+83.99	08°20'45" RT.	10000.00'	729.60'	1456.63'	S 76°05'17" E

SEC. 24, T.25 N., R.4E., W.M. SR-520  
CITY OF MEDINA



CONCRETE SHEAR WALL MAINTENANCE FACILITY  
LOADING AND DESIGN PER IBC 2006

DATUM  
NAVY 88

PLAN APPROVED BY:  
BRIDGE AND STRUCTURES ENGINEER  
PROGRAM DIRECTOR

SR 520 FILE NO. 7045 SHEET 1 OF 2

Bridge Design Engr.	M:W-Team\SR 520 FLOATING BRIDGE\PRELIMINARY PLAN\MAINT. BLDG\window files\LAYOUT.WND	REGION NO.	STATE	FED. AID PROJ. NO.	SHEET NO.	TOTAL SHEETS
Supervisor		10	WASH.			
Designed By		JOB NUMBER				
Checked By						
Detailed By	Lemons, T 07/09					
Bridge Projects Engr.						
Prelim. Plan By	Aldrich, B 07/09					
Architect/Specialist		DATE	REVISION	BY	APPD	

Wed Jun 16 12:28:57 2010

BRIDGE AND STRUCTURES OFFICE



SR 520  
BRIDGE REPLACEMENT & HOV PROGRAM  
FLOATING BRIDGE REPLACEMENT

PRELIMINARY PLAN  
MAINTENANCE FACILITY LAYOUT

BRIDGE SHEET NO. MF1  
SHEET OF SHEETS

C.S. 1700NT ~ PROJ. NO. XL3421 ~ SR520 REPLACEMENT PROJECT OFFICE ~ SR 520 MP 3.96 TO MP 3.98 ~ ALBERT D. ROSELLINI BR. NO. 52018 REPLACEMENT



WEST ELEVATION

Bridge Design Engr.	M:\W-Team\SR 520 FLOATING BRIDGE\PRELIMINARY PLAN\MAINT. BLDG>window files\WEST ELEV.WND							
Supervisor				REGION NO.	STATE	FED. AID PROJ. NO.	SHEET NO.	TOTAL SHEETS
Designed By				10	WASH.			
Checked By				JOB NUMBER				
Detailed By	Lemons, T	07/09						
Bridge Projects Engr.								
Prelim. Plan By	Aldrich, B	07/09						
Architect/Specialist		DATE	REVISION	BY	APPD			

BRIDGE AND STRUCTURES OFFICE



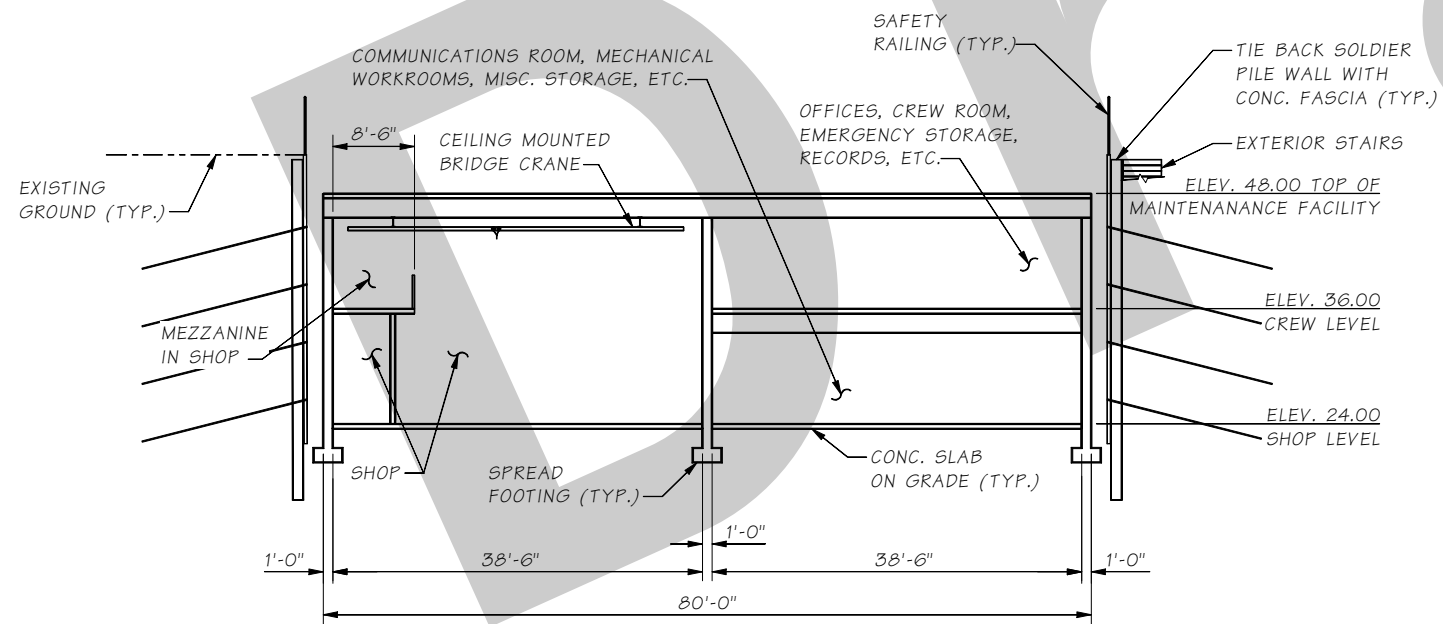
SR 520  
BRIDGE REPLACEMENT & HOV PROGRAM  
FLOATING BRIDGE REPLACEMENT

PRELIMINARY PLAN  
MAINTENANCE FACILITY-WEST ELEVATION

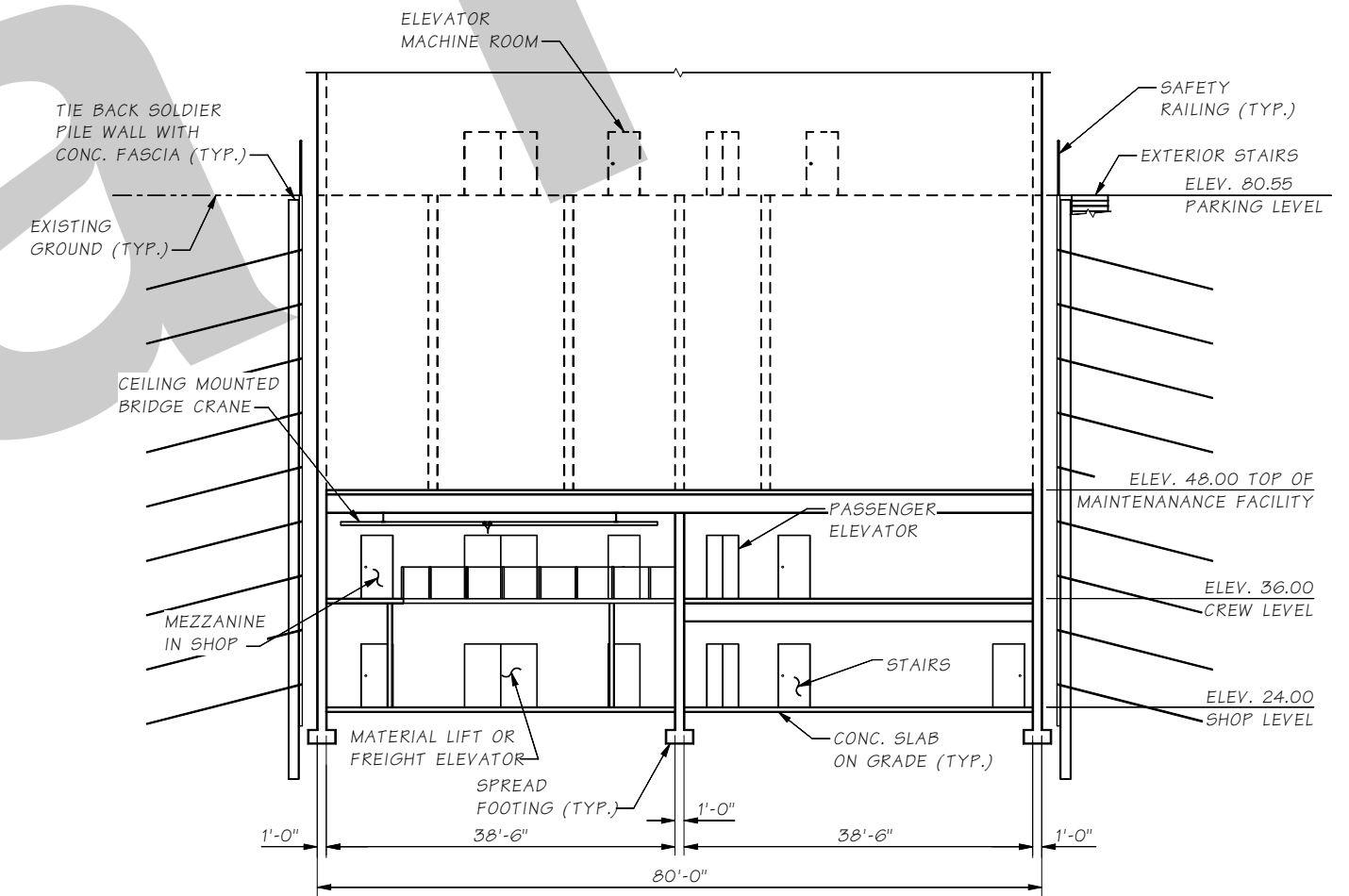
BRIDGE SHEET NO.	MF2
SHEET	
OF	
SHEETS	

## NOTES TO REGION

- IT IS UNDERSTOOD THAT TYPE, SIZE, AND LOCATION (TS&L) HAVE NOT YET BEEN FINALIZED FOR THE FOLLOWING ITEMS. IT IS ASSUMED THAT THEY WILL BE FINALIZED AND PROVIDED EARLY DURING FINAL DESIGN. DO YOU CONCUR?
  - RETAINING WALLS (TYPE, LOCATION AND LENGTH)
  - UTILITIES
  - LUMINARIES AND OTHER LIGHTING
  - R/W LINES
  - LOCATIONS OF BOREHOLES
  - MAINTENANCE FACILITY ACCESS ROADWAY ALIGNMENT, CHANNELIZATION, ETC.
  - DRAINAGE STRUCTURES
- JUNCTION BOX LOCATIONS AND CONDUIT RUNS FOR POWER AND COMMUNICATION WIRING AND ITS EQUIPMENT WILL BE DEVELOPED DURING FINAL DESIGN. DO YOU CONCUR?
- COORDINATION OF ARCHITECTURAL DETAILS WITH THE URBAN DESIGN TEAM IS REQUIRED DURING FINAL DESIGN.



SECTION A  
MF1



SECTION B  
MF1

SR 520 FILE NO. 7045 SHEET 3 OF 7

Bridge Design Engr.	M:\W-Team\SR 520 FLOATING BRIDGE\PRELIMINARY PLAN\MAINT. BLDG>window files\SECTIONS.WND						
Supervisor							
Designed By							
Checked By							
Detailed By	Lemons, T	07/09					
Bridge Projects Engr.							
Prelim. Plan By	Aldrich, BS	07/09					
Architect/Specialist							
	DATE	REVISION	BY	APPD			

Wed Jun 16 12:29:05 2010

BRIDGE AND STRUCTURES OFFICE



SR 520  
BRIDGE REPLACEMENT & HOV PROGRAM  
FLOATING BRIDGE REPLACEMENT

PRELIMINARY PLAN  
MAINTENANCE FACILITY SECTIONS

BRIDGE SHEET NO. MF3 OF SHEETS

C.S. 1700NT ~ PROJ. NO. XL3421 ~ SR520 REPLACEMENT PROJECT OFFICE ~ SR 520 MP 3.96 TO MP 3.98 ~ ALBERT D. ROSELLINI BR. NO. 52018 REPLACEMENT