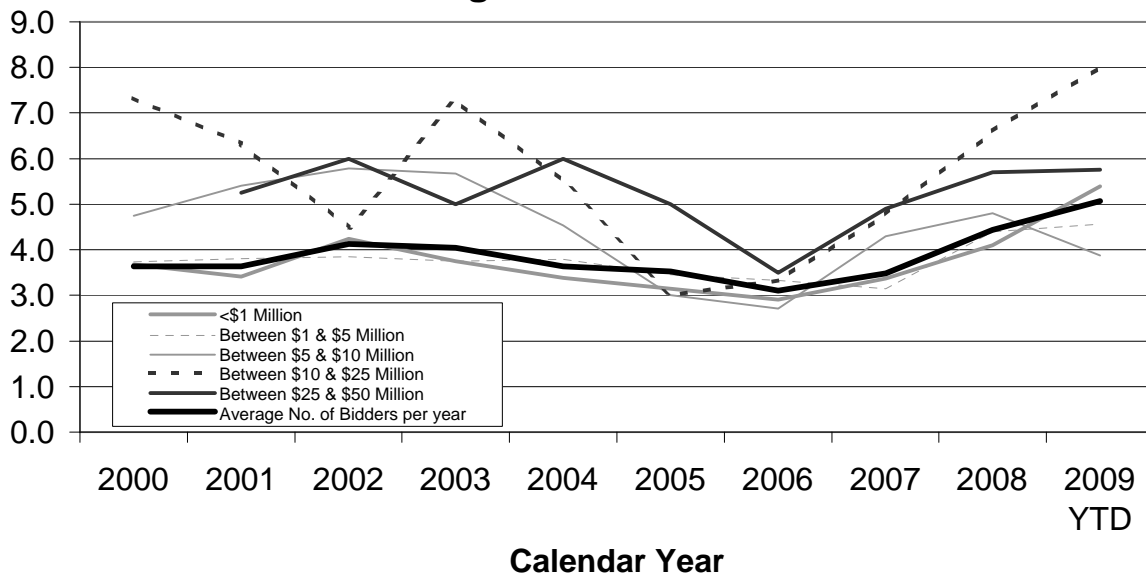


# Average Number of Bidders on WSDOT Contracts, 2000 - 2009 YTD

Dollars	2000	2001	2002	2003	2004	2005	2006	2007	2008	2009 YTD
<\$1 M	3.7	3.4	4.2	3.8	3.4	3.1	2.9	3.4	4.1	5.4
<\$5 M	3.7	3.8	3.8	3.7	3.8	3.5	3.3	3.2	4.4	4.6
<\$10 M	4.8	5.4	5.8	5.7	4.5	3.0	2.7	4.3	4.8	3.9
<\$25 M	7.3	6.3	4.5	7.3	5.5	3.0	3.3	4.8	6.6	8.0
<\$50 M		5.3	6.0	5.0	6.0	5.0	3.5	4.9	5.7	5.8
>=\$50 M				5.0		8.0		5.5	5.0	3.5
<b>Average</b>	<b>3.63</b>	<b>3.63</b>	<b>4.13</b>	<b>4.05</b>	<b>3.63</b>	<b>3.52</b>	<b>3.10</b>	<b>3.48</b>	<b>4.43</b>	<b>5.07</b>

## Average Number of Bidders



	2000	2001	2002	2003	2004	2005	2006	2007	2008	2009 YTD
1 bidder	7.7%	12.3%	12.6%	8.5%	13.4%	9.2%	10.3%	8.1%	4.1%	7.2%
2 bidders	26.1%	23.2%	22.2%	17.6%	20.4%	22.0%	37.6%	34.5%	17.6%	15.7%
3 bidders	23.9%	23.2%	15.6%	24.2%	22.5%	33.3%	19.7%	23.7%	23.0%	20.3%
More than 3 bidders	42.3%	41.2%	49.6%	49.7%	43.7%	35.5%	32.5%	33.8%	55.4%	56.9%
3 or more Bidders	66.2%	64.4%	65.2%	73.9%	66.2%	68.8%	52.2%	57.4%	78.4%	77.2%

Does not include emergency contracts, ferry vessel contracts or sole source contracts

