

## WSDOT Liability Trends FYs 2000-2007 (Excluding WSF and Vehicle Liabilities)

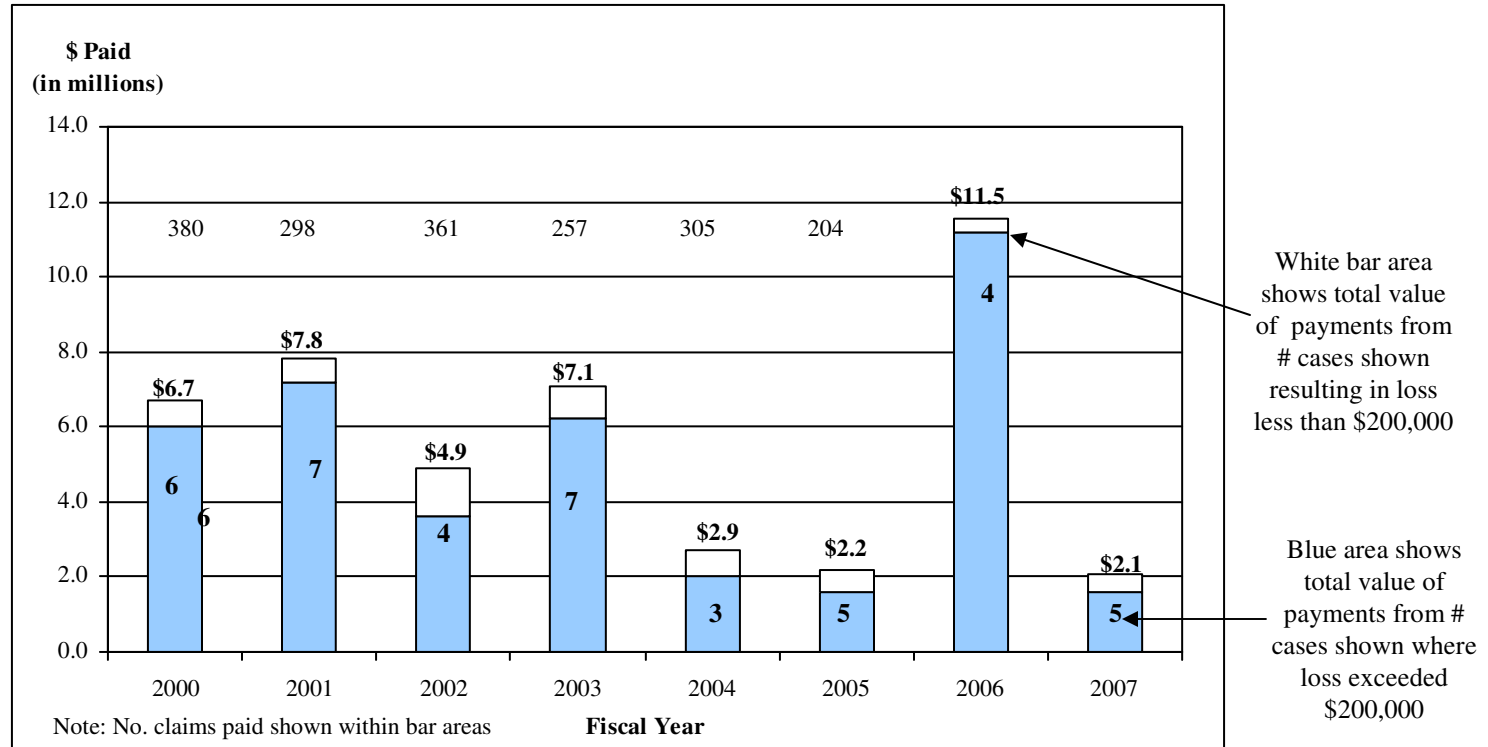
These WSDOT Liability exposures exist primarily in three areas:

- Highway users may suffer bodily injury or vehicle property damages and allege design defects.
- Highway users may suffer bodily injury or vehicle property damages and allege maintenance defects.
- Employees may suffer civil rights/employment damages.

The following seven charts provide cause and trend analysis in these three areas.

## WSDOT Highway Design and Maintenance Claims for FYs 2000-2007

### Each year just a few cases account for most of the dollar liability payments



The trend of just a few significant case payments accounting for the majority of annual payouts continued in FYs 06 and 07. Over the entire six years, 41 cases with payments over \$200,000 accounted for \$39.4 million (84%) of the total liability payments of \$45.2 million.

## WSDOT Highway Design and Maintenance Claims for FYs 2000-2005

### Design versus Maintenance Trends

#### Design

- FYs 04-05 had 3 significant paid design cases for a total of \$1.1 million, which represented 30% of the total significant design/maint. case payments of \$3.6 million.
- FYs 06-07 had 7 significant (>\$200,00) paid design cases for a total of \$9.3 million, which represented 55% of the total design/maint. case payments of \$16.8 million.
- A number of cable barrier cases have recently been brought and are pending in FY 06.
- Intersection design and barrier design continue to be the prevalent design issues.

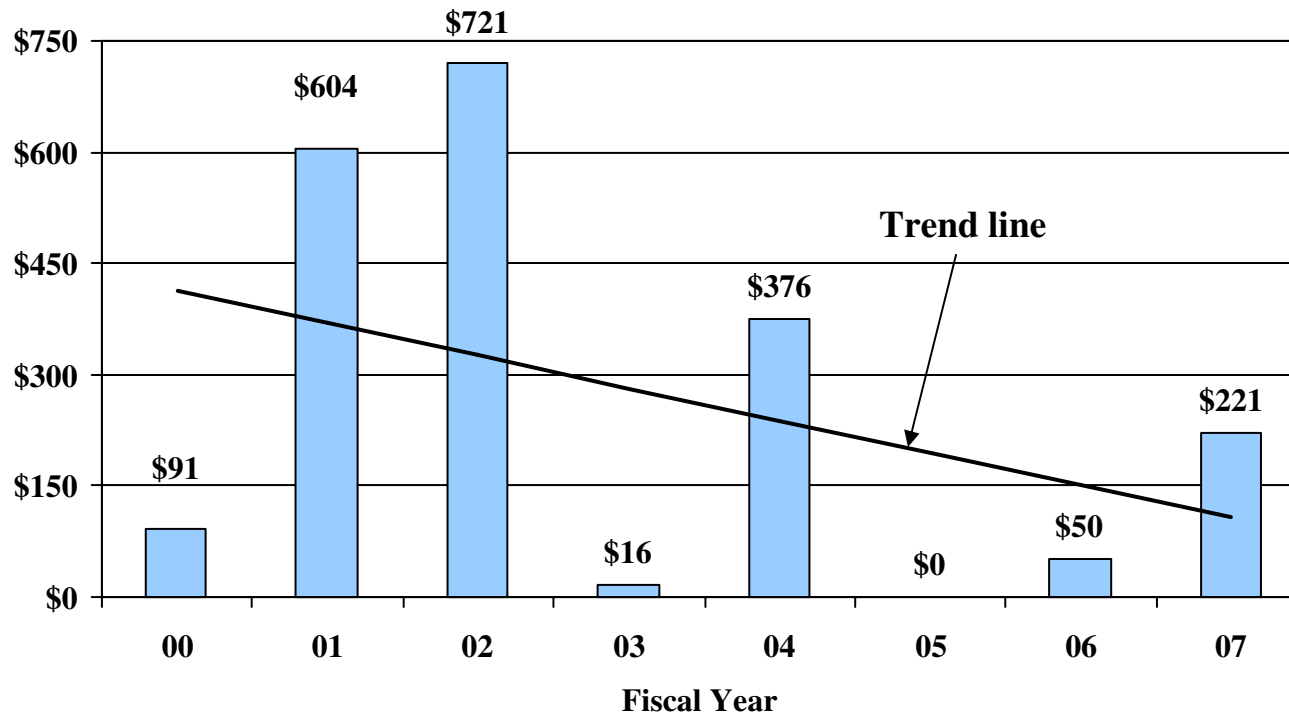
#### Maintenance

- FYs 04-05 had 5 significant paid maintenance cases for a total of \$2.5 million, which represented 70% of the total significant design/maint. case payments of \$3.6 million. **Therefore, over these two fiscal years these were the predominant type paid cases.**
- FYs 06-07 had 1 significant (>\$200,00) paid design cases for a total of \$2.85 million, which represented 17% of the total design/maint. case payments of \$16.8 million.
- A number of snow/ice maintenance cases have recently been brought and are pending.
- Ice maintenance continues to be the prevalent maintenance issue.

## WSDOT Civil Rights/Employment Law Claims Paid FY 2000-2007

**What is the trend in these cases?**

**\$ Paid (000)**

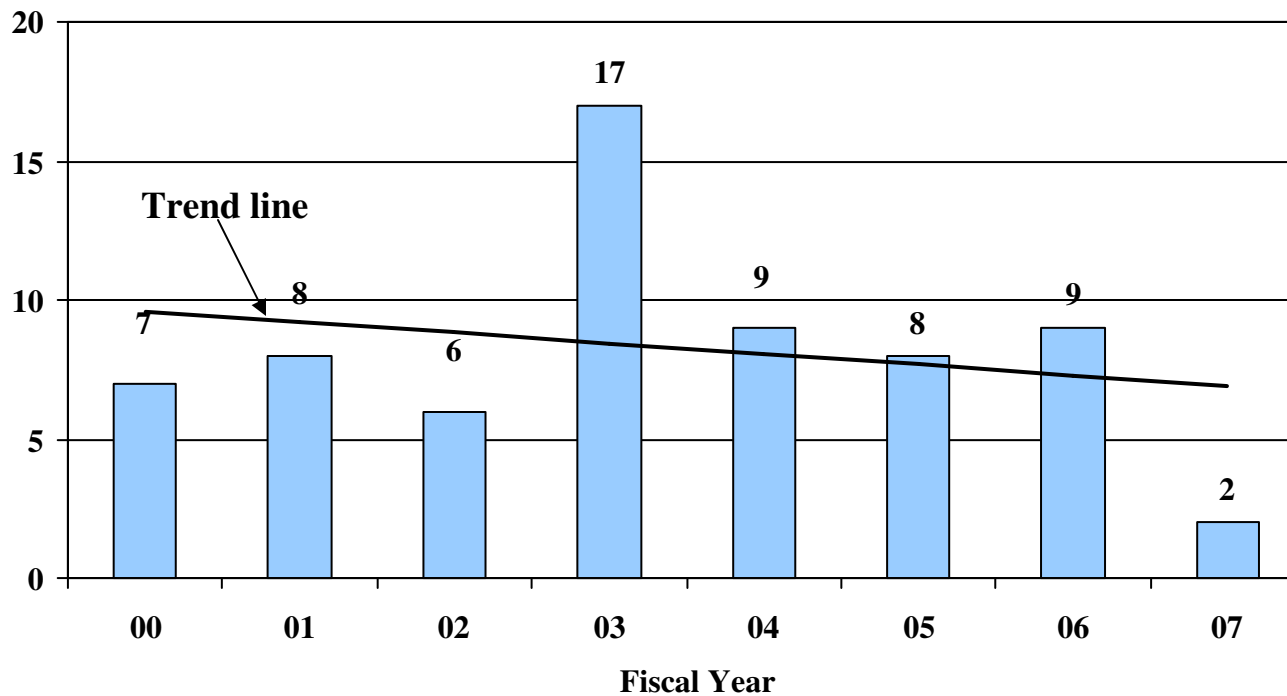


Over these six years, six cases with payments over \$300,000 accounted for \$1.4 million (67%) of the total liability paid of \$2.1 million. The long term trend for payment of these claims is significantly down.

## WSDOT Civil Rights/Employment Law Claims Filed FY 2000-2007

### What is the trend in these cases?

No. Filed



The long term trend for claim filings is slightly downward, primarily driven by the large number of filings in FY 2003. Interestingly, a large number of these claims have been dismissed on summary judgment motions by the courts or voluntarily by the plaintiff.